



RULES OF COMPETITON

Released November 2023

Position Statement on Inclusion

Tennis ACT is committed to providing a safe, fun and inclusive environment for all people, including those of diverse sexualities and genders. Being an inclusive sport not only reflects our core values, it also reflects the diversity of our local communities.

We have a zero-tolerance to any form of bullying, harassment or vilification. We're passionate about helping people lead happy, healthy, and active lives. Tennis ACT celebrates diversity of sex, gender identity, gender expression, sexual orientation, intersex status, ability, skill, cultural background, ethnicity, location, religious or political beliefs, and life stage. There is a place in our sport for everyone, exactly as you are.

Table of Contents

1.	Objectives.....	4
2.	General.....	4
3.	Entry into Canberra Tennis League.....	5
4.	Team Fees.....	7
5.	Player Registration, Restrictions & Reserves.....	7
6.	Team Captains/Team Supervisors.....	9
7.	Rating Playing Order.....	11
8.	Penalties.....	11
9.	The Grading Committee, Team Grading and Changes.....	11
10.	Match Format.....	12
11.	Match Schedule.....	13
12.	Points for matches and percentages.....	14
13.	Dress.....	14
14.	Player injury.....	14
15.	Cancellations.....	15
16.	Default.....	15
17.	Team forfeits.....	16
18.	Withdrawal.....	16
19.	Courts.....	16
20.	Procedures when court or weather conditions are not fit for play.....	17
21.	Court standards.....	18
22.	Lighting.....	18
23.	Match balls and branding.....	19
24.	Finals.....	19
25.	Finals eligibility.....	20
26.	Powers of League Operations.....	21
27.	Lodging Results.....	22
28.	Policies and Regulations.....	22
29.	Dispute Resolution: Breaches of these Rules.....	23
30.	Dispute Resolution: Other breaches.....	24
31.	Dispute resolution: Appeals.....	25
	Appendix 1.....	26

CANBERRA TENNIS LEAGUE – RULES OF COMPETITION

1. Objectives

- 1.1 These Rules of Competition for Canberra Tennis League (**Rules**) are established by the Competitions Committee of Tennis ACT (**Competitions Committee**) and may be amended from time to time by the Competitions Committee.
- 1.2 The Competitions Manager for Tennis ACT and Competitive Play staff employed by Tennis ACT (**League Operations**) are responsible for implementing these Rules and managing Tennis ACT competitions in consultation with (where appropriate), the Board of Tennis ACT (**Board**) and the Competitions Committee.
- 1.3 The objective of Canberra Tennis League is to provide team inter-club competitions for members of affiliated tennis Clubs/associations, to enable players who have reached the standard of the various divisions an equal opportunity to play against players of similar ability, over a given period of time. Canberra Tennis League competitions aim to enhance tennis and foster friendly rivalry, as a means of promoting tennis participation and improving tennis standards.
- 1.4 Players, teams supervisors, coaches, league coordinators, officials ,and parents must at all times act in the best interests of the Canberra Tennis League and Tennis ACT and not at any time engage in conduct which brings or has the potential to bring a participant, the league, Tennis ACT, Tennis Australia (**TA**) or the sport of tennis into disrepute, or which is or would have the tendency to be contrary to or prejudicial to the best interest, image or values of the league or Tennis ACT, or not in the "Spirit of Tennis".

2. General

- 2.1 The Canberra Tennis League is centrally governed, managed and administered by Tennis ACT and supported by the Competitions Committee. Each affiliated Club shall appoint a coordinator (together, the **Club League Coordinators**) to assist League Operations in operating the Canberra Tennis League in implementing these Rules.
- 2.2 These Rules may be altered or amended from time to time by the Competitions Committee in consultation with League Operations and the Competitions Coordinators. If updated, League Operations will endeavour to publish the updated version of the Rules online and notify all teams.

- 2.3 Any question arising from or in connection with the interpretation or construction of these Rules shall be determined by the Competitions Committee in its absolute discretion.
- 2.4 All participants in the Canberra Tennis League, including players, team supervisors, coaches, league coordinators, officials and parents (**Participants**) are bound by and must comply with these Rules, ITF Rules of Tennis and TA's national policies including, without limitation, the Uniform Tennis Anti-Corruption Program, the Extreme Weather Policy, the TA Code of Behaviour (including its reference to spectator behaviour and interference), Safeguarding Children Code of Conduct, the TA Member Protection Policy and Anti-Doping Policy (each a **Policy**). The policies are available at <https://www.tennis.com.au/about-tennis-australia/reports-and-policies/policies>.
- 2.5 These Rules are subject to and must be read in conjunction with the Tennis ACT Constitution (**Constitution**) and By-Laws, the TA Policies and any other rules, policies, guidelines, or procedures as notified to Participants by League Operations or the Competitions Committee. For junior competitions, this includes any additional requirements or responsibilities of the team supervisor for each team.
- 2.6 To the extent of an inconsistency between the Constitution, By-Laws or a TA Policy and these Rules, the Constitution, By-Law or TA Policy (as applicable) will prevail.
- 2.7 Although League Operations will endeavor to provide relevant information to Participants by email, phone and the relevant online system(s) (as necessary or applicable), it is the Participants' responsibility to also regularly check the Tennis ACT website and Match Centre for any relevant updates or information.

3. **Entry into Canberra Tennis League**

- 3.1 Each affiliated Club is entitled to enter teams in any Canberra Tennis League competition conducted by Tennis ACT. Clubs must nominate teams online before the closing date fixed by League Operations, and must select the players, including their names and specifying the team captain and base players.
- 3.2 League Operations shall only accept entries from affiliated Clubs or associations. Any player must be a registered member of the affiliated tennis Club before they play.
- 3.3 A Club must lodge its teams for a competition via the approved team entry process with League Operations by the closing date as determined by League Operations and notified to the Clubs in advance of the entry deadline.
- 3.4 For each team entered, the entry must set out:

- a) the names and date of birth of the proposed players and reserves (where League Operations advises that reserves are permitted and/or required for a team) and the proposed grade;
- b) a phone number for each player and reserve (where applicable) nominated at which the person can be contacted for competition purposes;
- c) the name, telephone number and email address of:
 - (i) for adult competitions:
 - (A) the player who is to be the captain of the team; and
 - (B) each other proposed player (other than reserves) for the team; and
 - (ii) for junior competitions, the team supervisor;
- d) the number of courts the Club has available for competitions; and
- e) for competitions where singles matches are played, the names of the proposed players and reserves (if applicable) in the current order of merit for each team.

3.5 One of the purposes for which the contact details in clause 3.4c) are to be included in the team entry is in the event that League Operations or an opposing team's captain needs to communicate information to a team in relation to a matter arising under these Rules. This includes (but is not limited to) in relation to the procedures when a court or weather conditions are not fit for play in accordance with clause 20 of these Rules. By participating in TACT competitions under these Rules, each player consents to his/her contact information being provided to other players in the same division or grade, or otherwise disclosed in accordance with the Tennis Privacy Policy, available at <https://www.tennis.com.au/privacy>.

3.6 League Operations designates the minimum number of players that must be included in a team for each Competition in accordance with these Rules. A player may not be listed in more than one team in a competition but may play as a reserve for other teams in accordance with these Rules.

3.7 A team entry may not be accepted if the Club has outstanding fines or owes other monies to TA or Tennis ACT.

3.8 League Operations has the sole discretion in the final selection of teams.

4. Team Fees

- 4.1 A team nomination fee will be payable to Tennis ACT for each team. Tennis ACT shall send a GST invoice to Clubs for all their nominated teams. Clubs shall pay all team nomination fees prior to the first round of competition or within fourteen days of receipt, whichever is sooner, or by a different deadline if notified in writing by TACT in advance of the first round of competition.
- 4.2 If a Club withdraws a team from a competition after League Operations has graded the team and compiled a draw:
- a) The Club shall be liable to pay the team entry fee; and
 - b) League Operations may suspend the players who withdrew from the team from Canberra Tennis League competitions for a specified period.
- 4.3 If a total percentage of matches across the season are cancelled due to extreme circumstances, such as Public Health Order, natural disaster (ie. smoke haze) etc a discount will be applied by the Competitions Committee. Please note discounts won't be applied if seasons are impacted solely by standalone washout. Washout matches may be combined with extreme circumstances in which a discount may then apply as determined by the Competitions Committee.

5. Player Registration, Restrictions & Reserves

- 5.1 No player shall represent any Club in Canberra Tennis League matches unless, at the time of playing, they are a Registered Financial Member of a Tennis ACT Affiliated Tennis Club or School.
- 5.2 If a Club has more than one team in the same division of a competition, a team member shall only play for one team.
- 5.3 A player shall be a base player of only one team in a competition. If a Club has two teams in the same division of a competition, any reserve may play for either team, but for only one team on one day. For example, reserves cannot play singles for one team and doubles for another team.
- 5.4 Players may play in more than one Tennis League competition or division in the same season provided they meet any conditions as specified by League Operations.
- 5.5 Players cannot play in two different teams within the same competition on the same day. However, in junior competitions this may occur as long as the reserve meets the eligible reserve criteria (see Rule 5.10).

Playing Restrictions

5.6 The following age restrictions apply to players:

- a) Junior competitions: players shall be the specified age or under for the particular division or league on the day of the scheduled finals of the competition.
- b) Juniors playing in adult competitions: Clubs may only nominate players who are 16 years of age on the day of commencement of the competition unless permission has been granted by League Operations to allow a player of a younger age to play, where that player is at least twelve years of age and League Operations is satisfied that the player's standard, temperament, and maturity is sufficient for adult competitions.

5.7 A female player is not eligible to play in a competition specified as a men's competition and a male player is not eligible to play in a competition specified as a women's competition. Notwithstanding this clause, League Operations may grant approval for a female player to play in a men's competition.

5.8 If League Operations (or the relevant Appeal Board if an appeal is properly lodged) finds a player to be in breach of the Playing Restrictions above, it shall result in forfeit of all sets and games in that rubber and any other rubbers deemed out of order.

Eligibility restrictions

5.9 In preliminary rounds:

- a) A player listed in a Club's team entry in a competition as a member of a team is eligible to play in that team or in a team of that Club as long as they meet the reserve eligibility criteria (see Rule 5.10).
- b) A player listed in a Club's team entry form in a competition as a reserve (where applicable) for a team is eligible to play in that team or in a team of that Club as long as they meet the reserve eligibility criteria (see Rule 5.10)

Reserves

5.10 Any team may include a reserve with a rating no more than 0.5 UTR higher than the base player they are replacing. The rating to be reviewed to determine eligibility for a reserve to replace a base player for each Canberra Tennis League is as follows:

- a) Monday/Tuesday League: Singles Rating
- b) Thursday League: Doubles Rating

- c) Saturday League: Singles Rating
- d) Junior Yellow Ball League: Singles Rating

- 5.11 A reserve may be an emergency player that is not added to the team prior to the match.
- 5.12 If a Club refuses to give a clearance to a player under Clause 5.10, the grounds for that refusal shall be given to both League Operations and the player, and the player may appeal to League Operations and the Competitions Committee (if applicable) against the refusal.
- 5.13 If the opposing team captain is contacted prior to the match regarding a reserve and this reserve is agreed upon by both captains, this reserve is eligible to play. This needs to be an agreement in writing (text or email). In these circumstances, only reserves within 1 UTR of the opponent will be considered by captains.
- 5.14 If a player cannot continue the match in a case where the match cannot be completed on one day (in accordance with these Rules), the player replacing that player must not be any stronger than the player being replaced and must be approved by League Operations.
- 5.15 If a player who is not eligible to play in a team (other than a player to whom Clause 5.10 applies) plays in a match, the match will be awarded to the opposing team provided that every player in the opposing team is an eligible player. In the case of a final, the match will be awarded to the non-offending team.
- 5.16 If both teams in a match include a player who is not eligible to play in the team, any rubber or set in which the ineligible player plays against a player who is eligible to play in the team shall be counted as a win for the opposing team of:
- a) in the case of a rubber – two sets and twelve games to love; or
 - b) in the case of a set – one set and six games to love.
 - c) in the case of timed matches – one point win in accordance with the point schedule
- 5.17 If both teams in a match include a player who is not eligible to play in the team, any rubber or set in which the ineligible players play against each other shall be disregarded.

6. **Team Captains/Team Supervisors**

- 6.1 It is the responsibility of the nominated team captain/supervisor of each team to, in accordance with the specific procedures and requirements outlined in these Rules:

- a) Organise and provide a team for each match the team is scheduled to play in;
- b) Organise and provide reserves;
- c) Ensure that all players are Financial Members of a Tennis ACT affiliated Club or School;
- d) Ensure that their team is available to commence competition matches at the scheduled start time as indicated on the relevant draw (it is highly recommended that teams arrive to their scheduled venue 15 minutes prior to the scheduled start time);
- e) Ensure that play commences no later than 5 minutes after the scheduled start time.
- f) Ensure that new tennis balls are provided in accordance with these Rules;
- g) The home team captain/supervisor is responsible for access to the courts and, switching on and off the lights before and after play (where applicable).
- h) For the home team, ensuring the courts are fit for play (for example, Clay Courts must be watered and bagged before and after sets and matches (as needed)).
- i) Provide a result sheet (where applicable).
- j) Lodge a completed official result.
 - (i) For adult competition, either the home or away team can lodge the result online and the opposing/other team must confirm the result.
 - (ii) For junior competition, the home team must lodge the result;
- k) The home team captain/supervisor, in the event of wet weather under these Rules, is to contact the opposition captain/supervisor and lodge a result indicating the wash out;
- l) If a team is going to forfeit, if possible contact the opposing team captain before the scheduled day of play. Written notice is recommended, and where possible the captain of the team forfeiting the match should call the opposing team captain as soon as possible to advise of the forfeit. Lodge the result indicating a forfeit.

7. **Rating Playing Order**

Singles (In Singles only and Singles & Doubles Competitions)

- 7.1 Players must play singles matches in singles merit order. This includes the Monday/Tuesday Competition and Saturday Competition.
- 7.2 For doubles only competitions players must play doubles matches in doubles merit order. This includes the Thursday Competition.
- 7.3 Failure to play in the approved merit order will result in forfeiture of that rubber and any subsequent rubbers, which have been played out of order, at the discretion of League Operations. For example, if the third rated singles player played incorrectly at Number 1 – players playing at numbers 2 and 3 would forfeit all sets and games in those rubbers.

8. **Penalties**

Penalties for playing an ineligible player

- 8.1 If any player in a team is not a Financial Member of a Tennis ACT Affiliated Club or School or is deemed an ineligible reserve, any rubber or set in which the player plays will be awarded to the opposing team provided that every player in the opposing team are eligible players.

Penalties for playing out of order of merit

- 8.2 If a player in a team fails to play in the proper order of merit, any rubber or set in which the player plays below the correct position shall be counted as a win for the opposing team of:
 - a) in the case of a rubber - two sets and twelve games to love; or
 - b) in the case of a set - one set and six games to love.

- 8.3 Teams will have discretion in regard to order of merit during the first 3 rounds of competition when players do not have a rating.

- 8.4 The score counted for any rubber or set in which a player plays above the correct position shall be that recorded in the results.

9. **The Grading Committee, Team Grading and Changes**

- 9.1 League Operations shall establish a Grading Committee consisting of one representative from each TACT Affiliated Club with teams participating for the upcoming season and any other persons determined by League Operations. The

Grading Committee is responsible for grading all competition divisions and determination of the number of teams in each division, and will consult with the Competitions Coordinators.

- 9.2 The Grading Committee reserves the right to accept or deny any team or team member nominated and/or allocate the team or team member to a higher or lower division.
- 9.3 Clubs must include all information relevant to grading and assist the Grading Committee as necessary.
- 9.4 The Grading Committee may at its discretion give permission for a player to use a provisional rating of playing ability at any time prior to or during the season, based on an application from the Competition Coordinator for that team's Club.

10. **Match Format**

- 10.1 Following the grading of teams under clause 9, League Operations shall compile a draw or fixture for the upcoming season for each competition division.
- 10.2 Matches, unless otherwise approved and advised by League Operations, shall be played on such dates and on such courts as displayed on TA's online system used for competitions from time to time.
- 10.3 All rubbers within each match are scored in accordance with the ITF Rules.
- 10.4 League Operations may determine match formats for each upcoming season, subject to these Rules.
- 10.5 In matches without an umpire, players should follow the TA Procedures for Matches Played without a Chair Umpire, available at <https://www.tennis.com.au/wp-content/uploads/2019/06/Procedures-for-Matches-played-without-a-Chair-Umpire-V19.3.pdf>.
- 10.6 Matches played in preliminary and final rounds shall be decided:
- a) in competitions where rubbers are played – on rubbers and, if rubbers are equal, on sets and, if sets are equal, on games;
 - b) in competitions where sets are played – on sets and, if sets are equal, on games; or
 - c) as determined by League Operations.
- 10.7 In preliminary rounds of competitions, an incomplete match shall be treated as a drawn match unless, on the basis of Clause 10.6, a team is in a position where it has won the match when play ceases.

- 10.8 In the final rounds of all competitions:
- a) each match shall, if possible, be continued on the same day until a definite result or a draw is reached whether under lights or on other courts; or
 - b) where a match cannot be completed on the same day because play has been abandoned under these Rules, the match shall be continued from the point of discontinuance:
 - (i) on the next following day; or
 - (ii) at a time and place fixed by League Operations;
 - c) When there is a draw in semi-final or finals matches the team who finished in the higher position on the ladder will be deemed the winner.

10.9 The decision in a match determined under this clause 10 may be altered by League Operations if, in accordance with these Rules:

- a) A player plays out of order of merit;
- b) There are delays in starting;
- c) A player is unable to continue playing; and/or
- d) Following commission of an offence and/or a protest by a player or team.

11. **Match Schedule**

11.1 Matches must be played in accordance with the scheduled times determined by League Operations.

11.2 A match shall not be played on a date other than the fixture date without the prior consent of League Operations.

11.3 Matches may be re-arranged or commence earlier or later when mutually agreed between the opposing team captains. Notwithstanding any other provision of these Rules, the hosting Club and League Operations must approve all changes to venues or start times in advance and in writing following a written request from the hosting Club.

Continuous Play

11.4 Play is to be continuous until each rubber is concluded. In all competitions in which rubbers are played, a player is only entitled to a rest or break, of no longer than ten minutes, between the completion of one rubber and the commencement of the next rubber.

12. **Points for matches and percentages**

12.1 Subject to these Rules, points for a match in preliminary rounds shall be:

- a) where rubbers are played - 6 points for a win, 4 points for a draw, 2 points for a loss, plus 2 points to the winner of each completed rubber and 1 point to each team for each uncompleted rubber;
- b) where sets are played - 6 points for a win, 4 points for a draw, 2 points for a loss, plus 2 points to the winner of each completed set and 1 point to each team for each uncompleted set;
- c) where matches are timed – 6 points for a win, 4 points for a draw, 2 points for a loss. No points are awarded for games, however games will be recorded for countback purposes if required.
- d) in all competitions - no points to a team receiving a bye or to a forfeiting team; or
- e) as determined by League Operations.

12.2 For matches that are cancelled or abandoned, where a match is based on rubbers and a rubber has not been completed, or on sets and a set has not been completed, no points shall be awarded. Unless a result has been reached, the match will be considered a draw and points awarded in accordance with clause 12.1.

12.3 For the purposes of determining finalists by calculation of percentages, League Operations shall record the details of each match, adjusting these where necessary under these Rules.

13. **Dress**

13.1 Players shall abide by the dress code approved by League Operations from time to time and notified to the Clubs, and in any event in accordance with the TA guidelines (<https://www.tennis.com.au/wp-content/uploads/2021/03/AR-Dress-and-Equipment-2021-1.pdf>)

14. **Player injury**

14.1 If a player is injured and forced to retire from a rubber, the injured retiring player cannot come back in and play any other rubber (including doubles) in that match.

14.2 If a team is unable to field a doubles pair due to a player retiring, this rubber will be forfeited and all points associated with winning a rubber will be awarded to the non-retiring pair.

15. **Cancellations**

15.1 The TA Extreme Weather Policy (available at <https://www.tennis.com.au/wp-content/uploads/2022/11/TA-Extreme-Weather-Policy-approved-and-effective-13-Oct-2022.pdf>) applies to all matches.

15.2 If a match is cancelled due to weather in accordance with these Rules, the match will not be postponed and there will be no result. No match can commence later than 1 hour after the scheduled start time, and in such circumstances, the match will be deemed cancelled.

16. **Default**

Team default

16.1 Where a team fails to appear for a match within 15 minutes of the scheduled commencement time of the match, the match shall be deemed defaulted and the team not in default shall be awarded all rubbers, sets and games and all the points for the match (unless extreme extenuating circumstances and both team captains agree).

Late player

16.2 If a competition rubber cannot commence until all players are present, all players of both teams shall be ready to play at the allocated courts at the time scheduled for the commencement of competition play. A set will be claimed for every 15 minutes delay from the scheduled starting time (unless extreme extenuating circumstances and both team captains agree). Sets and rubbers that can be completed should be completed.

16.3 If a competition match can commence without all players being present, and all players are not in attendance at the scheduled commencement time, those rubbers or sets which can be commenced should commence. For those rubbers or sets which cannot commence, forfeiture of a set may be claimed for every 15 minutes delay from the scheduled starting time.

16.4 If a player is not present prior to the commencement of play but is fully intending to participate, the player's name may be entered on the scorecard, in merit order.

16.5 No warm up is permitted for any player arriving after the scheduled start time of the match.

16.6 Players forfeited from sets or rubbers under these Rules may still take part in later sets or rubbers.

17. **Team forfeits**

17.1 Any team forfeiting a match shall, where possible, contact the opposing team captain before the scheduled day of play. Written notice is recommended, and where possible the captain of the team forfeiting the match should call the opposing team captain as soon as possible to advise of the forfeit.

17.2 Results for a forfeiting team are recorded as if the forfeiting team lost all rubbers, sets and games that would have been played in the match.

17.3 Results for the team receiving a forfeit are recorded as if that team won all rubbers, sets and games that would have been played in the match.

18. **Withdrawal**

18.1 In circumstances where a team withdraws from a competition once a season has commenced, League Operations will have the widest and absolute discretion to determine whether to adjust ladder points, ladder positions and fixtures as it considers appropriate to accommodate the team withdrawal.

19. **Courts**

19.1 Each Club must register with League Operations:

- a) a venue for its home matches (**Home Venue**) with enough courts to supply 2 courts per team on a home and away basis due to more teams than court availability; and
- b) An additional venue to support matches that cannot be played at the home venue.

19.2 In the event that a Club is unable to register an additional venue to support matches that cannot be played at the Home Venue, that Club may request that League Operations select a secondary venue, and must pay the agreed cost to that secondary venue selected by League Operations.

19.3 Matches shall be played at the places and on the number of courts determined by League Operations as set out on the draw unless League Operations has notified team captains that the match is to be played at another venue.

19.4 Matches may be played on alternative venues if:

- a) Permission is granted by League Operations to the Clubs to play on courts at an alternative venue;
- b) For preliminary rounds, if the captains of the two teams agree, a match may be transferred at any stage to another court or courts but the match must be played on the day set out in the draw; and
- c) In final rounds, if the captains of the two teams agree, a match may be transferred at any stage to another court or courts and can be completed on the day set out in the draw on the following day if a match cannot be completed on the same day because play has been abandoned in accordance with these Rules.

19.5 Clubs may seek permission to play on courts at alternative venues away from the home venue.

20. **Procedures when court or weather conditions are not fit for play**

20.1 Where there is doubt as to whether the courts allocated for a match will be fit for play, the captain of the home team shall (please see appendix 1 for guides and recommendations for determining if courts are fit for play):

- a) inspect the courts one hour before the match is due to commence;
- b) inform the captain of the visiting team of the decision by contacting that captain, if the captain is not contactable, an alternate player on the team, by phone as soon as practicable, and in any event before play is due to commence.

20.2 Where there is doubt whether the courts allocated for a match will be fit for play, a player should contact his or her team captain. If a cancellation cannot be confirmed at that time, the player shall attend at the courts at the time play is due to commence.

20.3 Even if a match has not been cancelled under Clauses 20.1 or 20.2, the captain of the home team may decide to delay the commencement of the match for a period no longer than one hour from the time fixed by the Committee for the commencement of play. At the end of that period, that captain may then decide to cancel the match if the courts are still not fit for play.

20.4 In preliminary rounds, where play has commenced in a match:

- a) the Club official or the captain of the home team may decide, at any time, to abandon a match because a court on which the match is being played is not in a fit condition for play;
 - b) if a player does not wish to continuing playing a match in rain that began after the match started, play is to be disrupted; or
 - c) if rain disrupts play, then, after the expiration of 30 minutes from the commencement and continuation of that disruption, either team captain can elect to declare the match to be a washout.
- 20.5 Should rain, bad light or other event make allocated courts unavailable in accordance with these Rules, teams by mutual consent may agree to complete rubbers on alternate courts or an alternative day as long as the match is completed prior to the next round
- 20.6 In final rounds, a match that has started may only be abandoned because a court is not in a fit condition for play by order of the Club official or on agreement of both captains.
- 20.7 Players must abide by the TA Extreme Weather Policy (available at <https://www.tennis.com.au/wp-content/uploads/2022/11/TA-Extreme-Weather-Policy-approved-and-effective-13-Oct-2022.pdf>)
- 20.8 For Leagues with a scheduled start time prior to 5pm - play will cease 10 minutes after the time of sunset, as per the BOM website – bom.gov.au. Play may only continue with the agreement of both captains and all players involved in play at that time.

21. **Court standards**

- 21.1 Clubs shall be responsible for providing courts and facilities that are suitable for Canberra Tennis League play.
- 21.2 The Club's appointed Club League Coordinator shall adjudicate on the fitness of courts for play.
- 21.3 If, in the absence of the Club League Coordinator, both team captains must agree on the fitness of courts for play, and if they are unable to come to an agreement, the match will be cancelled.

22. **Lighting**

- 22.1 All Clubs that are subject to ACT government light restrictions or curfews, must advise League Operations when nominating teams for night competition. With

prior approval from League Operations and in mutual agreement with away team, such fixtures may commence earlier than advertised start time. Any unfinished rubbers shall be recorded as incomplete. Clubs should make every effort to ensure that sufficient court time is available to complete a fixture. League Operations may require a Club to find an alternative venue, if that is not possible.

22.2 Clubs must ensure that lights are available for the duration of night matches. Any rubbers not completed due to lights being turned off will be forfeited by the home team.

23. **Match balls and branding**

23.1 Tennis ACT approved tennis balls must be used for all Canberra Tennis League matches. Match balls will be supplied by Tennis ACT at the start of the League Season.

23.2 For each preliminary round fixture, the hosting Club must provide:

- (i) In competitions in which two courts are used, four new balls; and
- (ii) In competitions in which one court is used, two new balls; and

23.3 For finals Tennis ACT will supply additional new tennis balls.

23.4 Tennis League teams may have marketable team names, and player names may be printed on the back of team shirts. If there is a corporate sponsor for Tennis League, League Operations may direct Club to display that sponsor's logo on their team uniform.

24. **Finals**

24.1 At the completion of the preliminary rounds, teams shall be ranked in a competition on average points gained per match played. All final positions on the ladder shall be calculated by "points ratio", where the total number of points is divided by the number of matches played.

24.2 Matches played shall include incomplete matches, abandoned matches and forfeits, but shall exclude cancelled matches due to extreme or wet weather.

24.3 If a team forfeits three or more preliminary rounds matches in a competition, League Operations shall disregard all points gained in matches involving that team when determining finalists.

24.4 In the event of a tie on the ladder, final positions shall be determined by:

- a) On the number of match wins. If these are equal, then;

- b) On the number of rubbers won. If these are equal, then;
- c) On the number of sets won. If these are equal, then;
- d) On the number of games won. If these are equal, then;
- e) Total rubbers won, then total sets won, then total games won on head-to-head results over the qualifying rounds.

24.5 If the competition involves a final four:

- a) the first semi-final shall be played between the team in the first position and the team in the fourth position;
- b) the second semi-final shall be played between the team in the second position and the team in the third position; and
- c) the final shall be played between the winning semi-finalists.

24.6 Semi-finals and finals matches shall be played

- a) for adult competitions:
 - (i) at the courts of the Club finishing higher on the ladder, and they shall be the home team.
 - (ii) the Club finishing highest shall provide courts of their nominated surface at the nominated venue or an alternative venue. If not, the match shall be played at the opposition Club's courts, and they shall become the home team.
- b) for junior competitions:
 - (i) finals shall be played at a centralised venue nominated by Tennis ACT unless directed otherwise by League Operations.
 - (ii) semi-final shall be played at the courts of the Club finishing higher on the ladder, and they shall be the home team.

24.7 Tennis League Operations must be advised of any changes at least two days prior to the match. In the absence of either of the above, and should a more suitable venue be mutually agreed upon between the opposing Clubs, the highest finishing Club on the ladder shall be the home team.

25. **Finals eligibility**

25.1 In final rounds, a player is not eligible to play in a team unless the player:

- a) Meets the eligibility requirements of being a team member or reserve for that team or meets the rating reserve criteria; and
- b) has played in at least 30% of preliminary rounds in that grade or lower and has not been ruled ineligible by the Competitions Committee.

25.2 For **incomplete or washed out matches** to be counted towards finals eligibility, player's names must be registered on the score card online in Tennis Australia's online competition system within 48 hours of the scheduled commencement time of the match. If the captain is unable to enter the names online, they must be emailed to League Operations within 48 hours.

25.3 For **forfeited matches**, to be counted towards finals eligibility, player's names for the team that received the forfeit only must be registered on the score card online in Tennis Australia's online competition system within 48 hours of the scheduled commencement time of the match. If the captain is unable to enter the names online, they must be emailed to League Operations within 48 hours.

25.4 Out of courtesy, please advise your opposition if your team is using a reserve in the finals to let them know you will be using an eligible reserve for the match prior to the commencement of the match.

Use of reserves in a final

25.5 A reserve, who satisfies finals eligibility criteria in one division, may play in a semi-final or final in that division or any division of that competition.

26. **Powers of League Operations**

26.1 League Operations include any appropriate tennis representative within Tennis ACT. This will include Competitive Play, Integrity Officer, MPIO, Competitions Committee. This also extends to the appropriate Tennis Australia Competitive Play and Integrity team.

26.2 To the extent permitted by law and subject to these Rules, the Constitution and By-Laws and the TA Policies, League Operations shall have absolute discretion relating to the Canberra Tennis League or any matter arising from or in connection with any competition, and without limiting the foregoing it shall have the power and discretion at any time to:

- a) Demand from any team any information of any nature relating to any matter arising from any match;
- b) Demand the replay of any match wholly or in part, and to alter or extend the place, day or time for the playing of any match;

- c) Suspend or disqualify a player or team, including their entourage and support team who attend their matches or attend a fixture in which they are participating (i.e. parent, family member, coach, trainer or friend) from the league as a result of a player's or team's conduct or behaviour arising from or in connection with a match for any non-compliance or breach of any of these Rules, the Constitution or any Policy; and
- d) Impose penalties whether by fine, suspension or disqualification or by forfeiture of points for any non-compliance or breach of any of these Rules, the Constitution or any Policy.

27. **Lodging Results**

- 27.1 In all circumstances, including where a match has been cancelled, abandoned or forfeited, the captain of either team, or his or her nominee, shall either:
- a) ENTER the results of a match online in Tennis Australia's online competition system within 48 hours of the scheduled commencement time of the match; or
 - b) CONFIRM the results of the match online in Tennis Australia's online competition system within 48 hours of the scheduled commencement time of the match.
- 27.2 In spite of Clause 27.1, the results of a match may be lodged with League Operations by email (within 48 hours of the scheduled commencement time of the match):
- a) If a captain has a prior arrangement with League Operations concerning the lodgement of results; or
 - b) In exceptional circumstances, such as where the online facility is not available.
- 27.3 All results will be deemed official 48 hours after the scheduled commencement time of the match.

28. **Policies and Regulations**

- 28.1 All competitions and matches must be conducted in accordance with their relevant policies, procedures and regulations and all Tennis Australia National Policies. The Tennis Australia National Policies are regularly reviewed and the most recent policy will be applied.

available at <https://www.tennis.com.au/about-tennis-australia/reports-and-policies/policies> including but not limited to:

- a) Tennis Australia Code of Behaviour, which includes disciplinary action for inappropriate spectator behaviour;
- b) Tennis Australia Member Protection Policy
- c) Tennis Australia Anti-Doping Policy
- d) Tennis Australia Disciplinary Policy
- e) Tennis Australia Anti-Corruption program
- f) Tennis Australia Social Media Policy
- g) And any other policy, rule, procedure or regulation of which Tennis Australia may publish from time to time.
- h) Tennis Australia Rules for non-umpired matches
<https://www.tennis.com.au/wp-content/uploads/2019/06/Procedures-for-Matches-played-without-a-Chair-Umpire-V19.3.pdf>
- i) Tennis Australia Dress & Equipment Regulations
- j) AR Tournaments Rules & Regulations – Publicity, promotion and use of Image. In the event, that these regulations do not cover a rule/procedure – Players, Referees and Match Supervisors should refer to - The ITF Rules of Tennis

<https://www.itftennis.com/media/7221/2022-rules-of-tennis-english.pdf>

29. **Dispute Resolution: Breaches of these Rules**

- 29.1 A Club or a captain of a team may lodge a protest, in writing, to League Operations for determination by League Operations, that an opposing Club, a player, team or spectator of that Club has committed an offence in a match, including a breach of these Rules or any other rules, policies or procedures determined by League Operations or the Competitions Committee in accordance with these Rules. This must be via email to actcompetitions@tennis.com.au.
- 29.2 A captain of a team who intends to lodge a complaint or protest shall notify the opposing captain of this intention before play proceeds after the occurrence of the incident to which the protest refers, if circumstances allow.
- 29.3 Subject to these Rules any dispute, complaint or protest by a team and/or participants must be referred for determination to League Operations within 3 days of the date of the alleged incident/breach and the referral must contain a precise

statement of the issue(s) in dispute, the relevant facts giving rise to the dispute. League Operations may, in its sole discretion, waive this timing requirement having regard to the nature of the delay or the nature of the alleged incident/breach.

- 29.4 If a Club or any player in a team has breached, failed, refused or neglected to comply with these Rules or any other rules, policies or procedures determined by League Operations or the Competitions Committee in accordance with these Rules, League Operations may:
- a) deprive a team of some or all of the points gained in a match;
 - b) award winning points to the losing team in a match or such points as League Operations determines to either team in a match;
 - c) in the case of a cancelled match, deduct points from the total points so far gained by an offending team in a competition; and/or
 - d) adjust the scores of both teams in a match in such a way as League Operations determines in that particular case.

29.5 Unless a protest is lodged under clause 29.1, a match shall be completed.

29.6 If a match is played under protest, the protest shall be emailed to League Operations on ACTCompetitions@tennis.com.au

29.7 League Operations must, within five days of the date of request for such adjudication by any party, request any response to the dispute from the other party.

29.8 League Operations has the power to adjudicate any dispute referred to it for determination in any way in its absolute discretion but subject to the principles of natural justice, these Rules and any Policy (if relevant).

30. **Dispute Resolution: Other breaches**

30.1 All matches shall be played in accordance with the TA National Policies under clause 28, which can be found at <https://www.tennis.com.au/about-tennis-australia/reports-and-policies/policies>.

30.2 In addition to the powers of League Operations to determine penalties under these Rules, an Integrity Officer to hear complaints against the conduct of players.

30.3 If the Board of Tennis ACT, the Competitions Committee, or a player considers that any player, by his or her conduct, has wilfully infringed the Constitution, the By-Laws, the ITF Rules of Tennis, or has acted in any way detrimental to the interests of Tennis ACT or the game of tennis, a complaint about the conduct may be lodged to

League Operations The complaint must be in writing and must be lodged within 72 hours of the time the conduct complained about occurred..

30.4 In line with the TA Disciplinary Policy (if applicable), any breaches and/or disputes may require further investigation into the matter. League Operations may commence an investigation of their own volition or following a complaint lodged under clause 30.3. The investigation process will be conducted by a representative from League Operations and will include the following steps.

- a) Requesting a written response from the respondent;
- b) Collecting witness statements from any other parties that the investigator deems necessary;
- c) Conducting interviews that the investigator deems necessary; and
- d) Collecting any other information, which may include video footage, photos, recordings etc. that the investigator deems necessary.

30.5 The Powers of League Operations (including as to penalties) are listed under clause 26. Penalties can range from minor penalties to major penalties including (without limitation) apologies or suspensions.

31. **Dispute resolution: Appeals**

31.1 Appeals regarding the outcome of a dispute, may be submitted to League Operations. If the ruling is appealable, League Operations may decide to refer the matter to Tennis Australia Integrity for advice. Tennis Australia will have the final determination on any appeal under this clause. Tennis Australia may refer the dispute to an independent tribunal for a final determination, if in Tennis Australia's sole discretion, it is appropriate to do so.

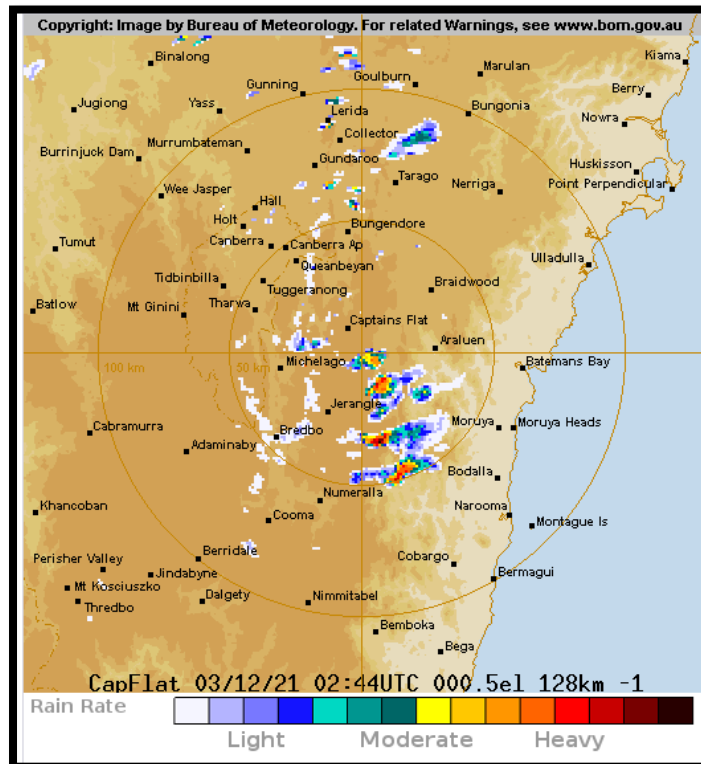
Appendix 1

Guides and recommendations for determining if courts are fit for play:

- It is important to check the local weather forecast and conditions as an extra measure. This will assist in determining if matches may be playable by the allocated match start times. Some potential example scenarios are listed below as a guide:
- Example 1: there may have been an earlier downpour of rain and the courts appear wet a few hours before match time. If there is no more rain predicted and the radar is showing no more rain to come, then these courts are likely to be playable by the match time. See below factors which may assist in determining.
- Example 2: Courts have puddles and there is consistent rain or drizzle, further rain is predicted and the radar shows more showers coming. These courts are less likely to be playable.
- Factors which will make courts dry quicker and be playable:
 - Being above 15 degrees
 - Sunny and windy conditions
 - If available a squeegee device can be used on hard courts to remove and spread puddles or pools of water; claycourt sponges can be used; bagging devices can be used on synthetic grass courts to spread any puddles. This significantly helps in drying courts.
 - A combination of the above factors could see courts dry and playable in 30-60 mins.
- Factors which will mean courts take longer to dry and be playable:
 - Cooler temperature - ie. below 15 degrees
 - Overcast conditions – ie no sun.
 - No wind
- The Bureau of Meteorology (BOM) will give you the most up to date weather forecast as well as the current weather radar. This will assist to see if there is further rain likely.

<http://www.bom.gov.au/products/IDR402.loop.shtml>

The radar screen looks like this below and will “loop” and show the movement of any rain which appears.



- Please note safety of participants is the highest priority

Hard Court examples:

- Puddles of water and/or pooling on the court
- Courts and lines are slippery (the lines of a hard court will be more slippery than the playing surface so it is important to check these are OK)
- If there is risk of players slipping/injury on the court due to wet surfaces play should not occur



Clay Courts examples:

- Puddles of water and/or pooling on the court

- Courts may seem muddy
- Courts may seem okay from a distance, however when stepping onto the court it seems slippery, unstable and waterlogged



Synthetic Grass examples:

- Puddles of water and/or pooling on the court
- Courts and lines are slippery
- If there is risk of players slipping/injury on the court due to wet surfaces play should not occur
- Courts may be waterlogged

