



AUSTRALIAN COMPETITIVE PLAY FRAMEWORK

CONTENTS

PATHWAYS	2	COMPETITION MATRIX	9
<i>THE FINDING</i>	2	<i>JUNIOR</i>	9
<i>THE OPPORTUNITY</i>	2	<i>OPEN</i>	9
<i>SUCCESS DEFINITION</i>	2	NATIONAL SERIES – 12/U & 14/U AGE GROUPS	10
<i>FAQS</i>	2	<i>2022 EVENTS SUMMARY</i>	10
RANKINGS AND RATINGS	3	GRASSCOURT & CLAYCOURT CHAMPIONSHIPS	11
<i>THE FINDING</i>	3	<i>FORMAT</i>	11
<i>THE OPPORTUNITY</i>	3	<i>ACCEPTANCE LIST BREAKDOWN</i>	11
<i>SUCCESS DEFINITION</i>	3	HARDCOURT CHAMPIONSHIPS	11
<i>FAQS</i>	3	<i>FORMAT</i>	11
FORMATS	4	<i>ACCEPTANCE LIST BREAKDOWN</i>	11
<i>THE FINDING</i>	4	WILDCARD OPPORTUNITIES	12
<i>THE OPPORTUNITY</i>	4	STATE CLOSED QUALIFYING EVENTS	12
<i>SUCCESS DEFINITION</i>	4	STATE CLOSED QUALIFYING EVENTS – NSW / QLD/ VIC	13
<i>FAQS</i>	4	STATE CLOSED QUALIFYING EVENTS – SA / WA	14
DELIVERY	5	MASTERS	15
<i>THE FINDING</i>	5	<i>FORMAT</i>	15
<i>THE OPPORTUNITY</i>	5	<i>ACCEPTANCE BREAKDOWN</i>	15
<i>SUCCESS DEFINITION</i>	5	NATIONAL SERIES – 16/U & 18/U AGE GROUPS	16
<i>FAQS</i>	5	<i>2022 EVENT SUMMARY</i>	16
CULTURE	7	EVENT CRITERIA	17
<i>THE FINDING</i>	7	<i>JUNIOR</i>	17
<i>THE OPPORTUNITY</i>	7	<i>OPEN</i>	19
<i>SUCCESS DEFINITION</i>	7	PRIZE MONEY ALLOCATIONS	20
<i>FAQS</i>	7	COMPETITIVE PLAY OFFICIATING REQUIREMENTS*	21
DIGITAL	7	<i>JUNIORS</i>	21
<i>FAQS</i>	7	<i>OPEN</i>	21
EDUCATION & COMMUNICATION	7		
<i>FAQS</i>	7		
ASPIRATIONAL PLAYER PATHWAY	8		

PATHWAYS

THE FINDING

The current competition pathway is disconnected, difficult to understand and does not represent a player's journey.

THE OPPORTUNITY

Develop a holistic, unified pathway centred around the player journey identified in the discovery phase. Invest in communicating with and educating players, parents and coaches about the right type and amount of competition for each stage.

SUCCESS DEFINITION

All competitive players understanding their stage in the pathway and where to find competition opportunities most suitable for their standard. An opportunity to play at the appropriate level for the majority of weeks in a year, with pathways leading to national team and individual championships for aspirational players.

FAQS

1. What are the rating bands per pathway stage?

There will be two broad competition classifications – Juniors and Open. Each of these classifications will have different rating bands associated with each pathway stage.

Rating bands will be used primarily as recommendation rather than restriction.

[See Competition Matrix for more information.](#)

2. What will the Nationals Series look like?

Initially, there will be National Junior Championships for the 12/u, 14/u, 16/u and 18/u age groups.

The 12/u and 14/u age groups will have the opportunity to compete in four national events each year:

- Grasscourt National Championships
- Claycourt National Championships
- Hardcourt National Championships
- Year-end Masters event.

Additionally, there will be a Teams National Championship, where the best 3 players from each state and territory are selected to compete. This will take place in June/July and players separated into 11/u, 13/u and 15/u age groups.

There will be only one National Championships for the 16/u and 18/u age groups which will take place on hardcourt at Melbourne Park in December, with ITF junior tournaments and domestic rating-based events comprising much of these player's calendars.

[See the National Series for more information.](#)

3. How do I qualify for the National Series?

There will be multiple avenues to qualify for the nationals, under-pinned by both a performance and participation criteria:

- Rating + participation minimums (Participation determined by MA but involving Events and Leagues minimums)
- Winning State Qualification events
- Wildcards

Qualification into the Masters Event will have an additional qualification criteria.

The intention is to have players participating and performing in their relevant state / territory competitions and earning their position in the national Event. The qualification criteria will also ensure team-based competition is featured as part of this qualification process.

[See the National Series for more information.](#)

4. What do the changes mean for top players?

Compared to previous years, top junior players will have an increased national offering through a Masters Event.

Running parallel to domestic competition will be an international pathway, offering ITF junior tournaments through to ATP and ITF World Tennis Tour events.

RANKINGS AND RATINGS

THE FINDING

There is ranking and rating clutter with the purpose and audience of each not well defined.

THE OPPORTUNITY

Design and adopt a primary ranking/rating system that promotes the desired competition behaviours, experiences and objectives per player segment identified during the discovery phase.

SUCCESS DEFINITION

All competitive players to establish and be aware of their rating. Competition deliverers using the rating to determine player entry, seeding and grading.

FAQS

1. What is the rating and why?

A comprehensive analysis has been undertaken to determine the most suitable rating system for Australian players based on identified player preferences throughout the review. A range of variables were considered:

- Global relevance
- Accuracy
- Existing market awareness / education
- Integration with existing Tennis Australia systems.

The primary rating will be the Universal Tennis Rating (UTR) The UTR will be integrated to TA platforms and match-data processing systems, allowing the application of the rating to be determined by Australian competition deliverers and administrators.

TA will establish a match 'data-lake' which means player and match related information will remain within TA systems. Should a change to the ratings or rankings provider need to change across time, this can be easily managed as all match data will remain the property of TA.

2. How does a rating work?

Most ratings have a demonstrated superiority in being able to better identify a player's level due to an increased number of data inputs comparative to a ranking system (win or loss). The inputs associated with the algorithm can be found at:

<https://support.universaltennis.com/en/support/solutions/articles/9000151830-understanding-the-algorithm-complete-summary>

The rating will better allow for level-based play which will improve both the overall player experience and a player's improvement trajectory.

3. How and when will the rating be introduced?

UTR is already used to determine Event entry. From 1 January 2022, UTR will be used to determine player seeding/grading at all Events. Event draws will also be defined by UTR rating bands.

Across Leagues, there are a range of rating systems currently in use and as such the UTR will incrementally be introduced across 2022 following completion of the summer leagues season.

4. How will the transition out of Australian Rankings work?

The Australian Ranking system was paused throughout 2020, with a need to shift to a rating based system. As such, the transition from ranking to ratings has already commenced and will occur in a broader sense throughout 2022. All players with an Australian Ranking have a current rating with the identified provider, allowing the transition to happen seamlessly.

FORMATS

THE FINDING

There is an abundance of inconsistent formats and naming conventions with limited insight into player preferences.

THE OPPORTUNITY

Improve the range of formats with a focus on time, team and level-based competitive opportunities. Remove offerings that do not meet the understood needs and wants of players. Ongoing and formalised experimentation with innovative formats.

SUCCESS DEFINITION

All player segments to have the option for both individual and team-based play, with an opportunity to provide formal feedback on format preferences. At least 50 per cent of all matches considered 'competitive'.

FAQS

1. What will be the naming conventions?

All forms of Competitive Tennis will be united under the Australian Competitive Play Framework. This will assist players in entering and navigating through the various competition opportunities. Key structural features include:

- One rating applied across all forms of competition
- Five player and pathway stages
- Three competition types (Events, Pro Events, Leagues)
- Five product design principles (localised, level-based, team-based, consumer-led, simplified).

[See Competition Matrix for more information.](#)

At a junior level, the term 'Tournaments' had become synonymous with a hyper-intense environment, where the player experience was often solely determined by a win or a loss, along with increasing incidents of behaviour which were misaligned to a positive competition culture. The term 'Events' will be used more broadly to promote a rounded and positive end-to-end experience, where the match-outcome will be one of the many features associated with a competition.

What flexibility will there be with formats?

Increased format flexibility will be provided to competition deliverers. Format recommendations will be provided based player segment and draw sizes.

[See Event Criteria for more information.](#)

2. How will team tennis become more of a feature?

A single rating used across both Events and Leagues will mean participation and performance in both Events and Leagues will carry the same value. This is different to the current system in which Australian Ranking Points are only awarded within Tournaments (singles-based events). Players will no longer need to forgo team tennis to improve their nationally recognised rating.

Qualification into National events will require participation in a team-based competition. This will further elevate the role of team tennis in a player's competition schedule.

An evaluation of the 'first competitive experience' is underway. The research undertaken thus far identifies a 'team' based experience as an important feature of a player's early introduction into competitive play. A positive early experience with team tennis will likely translate to a career-long affinity and involvement with team tennis formats.

In time new national team-based competitions will be introduced. These competitions will allow teams to transition through the pathway to reach a penultimate national competition. It is acknowledged that some regions and states across Australia first need time to establish an underpinning team/league structure.

3. How will level-based play be facilitated?

The UTR will be used by competition administrators and deliverers for the purpose of acceptance, seeding and grading. Once all players have an established and reliable rating this will enable competition opportunities to be designed by player standard. The UTR spread within a draw will depend on player numbers. To best promote a competitive match, the UTR recommend a rating band spread of no more than two full rating bands.

4. What is the future of UTR Pro Events?

UTR Pro Tour Tennis provided opportunities for Australian players to compete and earn money through the COVID pandemic. The future positioning of these events will be influenced by the schedule released by the ITF and ATP Challenger calendar.

DELIVERY

THE FINDING

Inconsistent delivery and at times a lack of trust and confusion over responsibilities.

THE OPPORTUNITY

Improve the governance and management structure of competitive tennis using clear language, defined competition calendars and delivery principles. Embed recommendations from other reviews such as child safety.

SUCCESS DEFINITION

Clear lines of delivery responsibility and standards. A fun, fair and unified competition framework which is built on the rich history and tradition of Australian competitive tennis.

FAQS

1. Who will be responsible for which player segments?

Deliver responsibility is determined by the type of competition and player level.

- International (INT.) and National (level 1) – Tennis Australia
- State (levels 2 and 3) – Member Association
- Region / Zone / Local (levels 4, 5, 6) – Regional Committees, Associations, Clubs.

[See Event Criteria for more information.](#)

2. What will a competition calendar look like?

Competition calendars will be designed following a range of established principles. There will be calendars produced for each pathway stage.

International Design and Delivery Recommendations:

- School holiday periods should be reserved for key junior events such as Nationals and some ITF Juniors
- The length of domestic ITF tournament swings needs to be considered:
 - 3-4 weeks for Pro Circuits
 - 2-3 weeks for Juniors (in school holidays)
- Lower grade Junior ITFs can overlap ITF Pro Circuit events (in the same week)
- Higher grade Junior ITFs should not overlap ITF Pro Circuits or National Team Events (i.e. Junior DC/FC/WJTs) to allow these juniors to compete in both event types
- There is not a strong need to offer ITF Pro Circuit events between April-September given most aspirational players are traveling during this time. This is a prime opportunity to offer prize money events.

State / Zone / Local design principles:

- Calendar scheduling:
 - Local junior competitive play within school term (after school hours)
 - Zone junior competitive play to not impact school days
 - State junior competitive play to be within the school holidays (or weekends only for national qualifying events)
 - Local & Zone open competitive play to not impact working hours (unless applicable to the specific demographic).
 - State open competitive play can occur during weekdays
- Use rating bands to design competition and provide level-based play (age/gender limitations less applicable at local/zone)
- State competitive calendars should be designed to support the National / International pathway. This should also form the pinnacle that the zone and local calendar should be working towards
- A variety of formats should be offered, reflective of player feedback where appropriate
- Avoid the overlapping of Event and League opportunities within the same player bands and geography
- View a player's calendar holistically (i.e. player camps)
- Provide a balance between team-based and individual play for each player segment, with the aim to provide a competitive play opportunities for each player segment each week.

3. How does an MA and Competition Deliverer apply to host an Event?

The process for hosting National, State and Zone endorsed events will follow a similar process to recent years.

Tennis Australia will supply a template for all MAs to conduct an endorsement application EOI process over the next few weeks.

For the 2022 Q1 Calendar MAs have until 12 November to apply for endorsement of their State-level events.

Competition Deliverers of Local and Zone/Region Events need to submit their application to their MA by 19 November.

The EOI process will vary in each state and territory.

TA or MA will provide further communication around the status of the application. If the competition is endorsed a letter along with the tournament file will then be sent to the club / deliver.

MAs are encouraged share best practice on endorsement processes, with shared principles and practices established through 2022.

4. What will be the entry fee and prize money structure? How is prize money allocated?

Prize money distribution for 2022 has been modelled to ensure identified player segments are provided an earning opportunity to further their career. Prize money will still be available for zone-based events.

Throughout 2022, a further review of prize money will be undertaken.

[See Prize Money Allocations for more information.](#)

5. What is the impact on clubs running competition and the associated business model?

The impact of a club will depend on their current involvement in the delivery of competition. Fundamentally, the hope is all clubs advance their year-round competition infrastructure, knowing there will be increased opportunities for more frequent localised competitive play.

The current tournament structure sees clubs and coach capitalising on a small number of large events. The intention would be to have a steadier flow of competition activity throughout the calendar year.

How will we ensure that Regional venues can still host events to support their financial model?

The following principles and practices will help to further promote competitive play opportunities within regions:

Junior:

- A new qualification criterion into National Championships will be conditional on participation on certain number of events – some of which could be placed within the regions
- As we move down levels, MAs are encouraged to replicate this with entry / qualification into State Signature / Premier events conditional on participation in specific events
- At a local level, MAs are encouraged to work with their Regional Committees / Associations and consider creating 'Series' with conditions on qualifying for Ratings Carnivals / Champion of Champions to drive participation
- Maximise events in regions during school holidays when players are seeking most opportunities to play.

Open:

- Allocating up to 10 x \$3,000 Open Series Events for each MA, we encourage MAs to place these regionally to drive participation once again
- An option of combining an Open Series event with Junior Series regionally, could provide additional opportunities for both juniors and aspirational players. (Officiating cost should be considered here).

6. When will the competition calendar be released?

The 2022 Australian Competitive Play Calendar will be released on 1 December 2021, for the first four months of 2022. Timelines outlining the publication of the remaining calendar for 2022, will be made available from February next year.

7. How and when do I enter Events in 2022?

The entry process for Events (tournaments) will remain unchanged for 2022. Events will be published on the TA website with players able to enter Events from the relevant page through their current account.

CULTURE

THE FINDING

There is a poor perception of tournaments due to subpar first experiences, a lack of officials and inconsistent management oversight by tournament hosts.

THE OPPORTUNITY

A competition structure underpinned by the Tennis Values and embedded with the Spirit of Tennis Behaviours. Invest in reforming the first competitive experience.

SUCCESS DEFINITION

Customers and consumers reporting an improved end-to-end competitive experience (CSAT measure).

FAQS

1. What will be the officiating requirements?

Provisional officiating requirements have been provided. These are currently being reviewed in consideration to the recent ATO decision on Officiating along with requirements to support the new calendar composition. These will be finalised ahead of the calendar being published on 1 December. For the purposes of planning, please refer to the provisional requirements.

[See Provisional Officiating Requirements for more information.](#)

2. What will be the characteristics of the first-competitive experience?

The 'First competitive experience' which would ordinarily take place in a club environment, is being reviewed and will be finalised during 2022. In relation to a player's first 'event' (or tournament) experience, the Junior Development Series is intended to play this role in helping introduce players into Event type competition.

DIGITAL

Embrace digitisation to support the competition experience for all players and administrators.

FAQS

1. Will Tournament Planner still be used?

Yes. The comparative functionality of Tournament Planner remains superior to other platforms currently available. There does remain an ambition to have one single public platform used to view forms of competitive play.

EDUCATION & COMMUNICATION

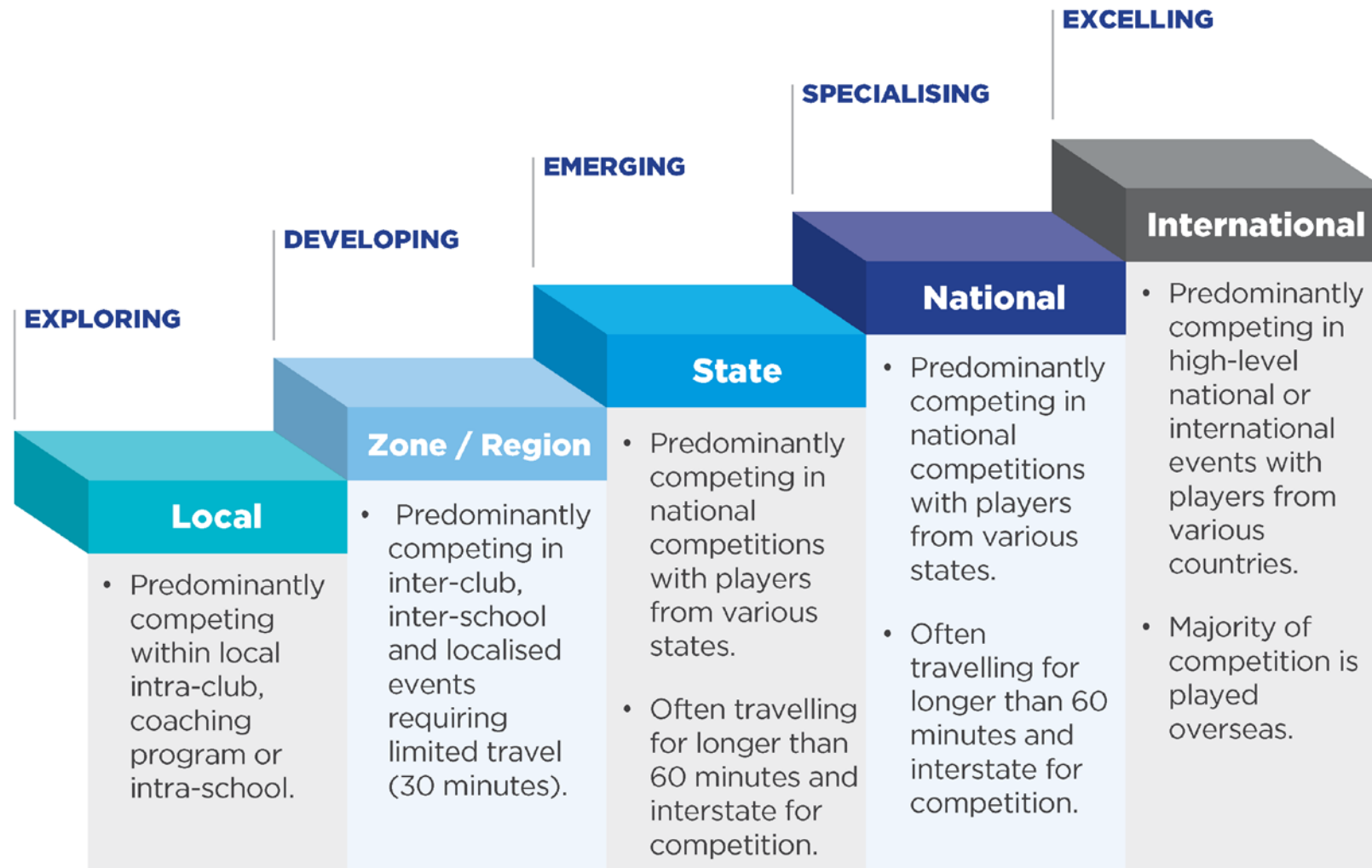
Reorganise and categorise competition to ensure it can be easily communicated and understood by all stakeholder groups. Provide complimentary education.

FAQS

1. With the changing of language from competitions to leagues there will be a significant education process, will there be collateral for signage, marketing tools etc provided?

Supporting all changes will be a range of education and marketing material. These materials will be created centrally and made available prior to the implementation of any change. A number of these resources and assets will be provided when the Calendar is published on 1 December 2021.

ASPIRATIONAL PLAYER PATHWAY



COMPETITION MATRIX

The competition matrix will ensure all players can simply determine an appropriate level based competitive play opportunity that is right for them.

There are two separate competition matrix's that have been designed, one for Juniors and one for Open.

The levels will help guide which offering is best suited for every player.

JUNIOR

LEVEL	LOCAL	ZONE / REGIONAL		STATE		NATIONAL	INTERNATIONAL
	6	5-4		3-2		1	INT.
RECOMMENDED PLAYER RATINGS*							
12 BOYS	Locally set	0-2	1-5	4.5+	5.7+	6.2+	N/A
12 GIRLS	Locally set	0-2	1-4.2	3+	4+	4.8+	N/A
14 BOYS	Locally set	0-2	1-7.5	6+	7.2+	8+	N/A
14 GIRLS	Locally set	0-2	1-6.2	5+	6+	6.8+	N/A
16 BOYS	Locally set	N/A	1-9.2	8+	9+	9.5+	N/A
16 GIRLS	Locally set	N/A	1-7.3	5.5+	7.2+	7.7+	N/A
18 GIRLS	Locally set	N/A	1-8	7+	7.8+	8.5+	N/A
18 BOYS	Locally set	N/A	1-10.5	9+	10.2+	11+	N/A
COMPETITIVE PLAY OPPORTUNITIES							
EVENTS	Community Series	Junior Development Series**	Junior Series	Premier Series	Signature Series	Nationals Series	ITF Juniors Junior Grand Slams
LEAGUE	Intra-Club Tennis	Inter-Club Tennis		State/Premier League		TA Premier League	N/A
SCHOOLS	Intra -Schools Tennis	Inter-School Tennis		State Championships		Bruce & Pizzey Cup	N/A
REPRESENTATIVE TENNIS	Club Teams	Regional / Representative Teams		State Teams		Australian Teams	Junior Davis & BJK Cup

OPEN

LEVEL	LOCAL	ZONE / REGIONAL	STATE		NATIONAL	INTERNATIONAL
	5	4	3-2		1	INT.
RECOMMENDED PLAYER RATINGS*						
MEN	Locally set	1-11	10.5+		12.5+	N/A
WOMEN	Locally set	1-8.5	7.5+		9+	N/A
COMPETITIVE PLAY OPPORTUNITIES						
EVENTS	Community Series	Open Series	Premier Series	Signature Series	UT Pro Tennis Tour Pro Tour	ATP/ITF/WTA Events AO Summer Series Pro Tour
LEAGUE	Intra-Club Tennis	Inter-Club Tennis	State/Premier League		TA Premier League	N/A
REPRESENTATIVE TENNIS	Club Teams	Regional / Representative Teams	State Teams		Australian Teams	Davis & BJK Cup

*Please note: Recommended player rating levels could differ slightly depending on your environment. Recommended rating levels may be adjusted from time to time. Recommended rating levels will be published on December 1, in line with the calendar

**Please note: Junior Development Series offerings may differ per state. Please refer to your MA for more information.

NATIONAL SERIES – 12/U & 14/U AGE GROUPS 2022 EVENTS SUMMARY

All players in a National Series Event (Direct Acceptance and Qualifying) need to meet state/territory required participation criteria for acceptance into a Nationals.

	TIMING	DRAW SIZE	DIRECT ACCEPTANCES	NATIONAL WILDCARDS RESERVED FOR SELECTORS	WILDCARDS FROM MAJOR STATE/TERRITORY CHAMPIONSHIP EVENT	QUALIFYING POSITIONS FROM STATE TOURNAMENTS	INTERNATIONAL WILDCARDS RESERVED
12/U & 14/U GRASSCOURT CHAMPIONSHIPS	January (From 2023)	Singles – 32 Doubles – 16	19	2	2	8	0
12/U & 14/U CLAYCOURT CHAMPIONSHIPS	April	Singles – 32 Doubles – 16	19	2	2	8	0
11/U, 13/U & 15/U AUSTRALIAN TEAMS CHAMPIONSHIPS	June/July	3 players from each MA (plus internationals)	Invitation Only	N/A	N/A	N/A	Invitation Only
12/U & 14/U HARDCOURT CHAMPIONSHIPS	Sept/Oct	Singles – 64 Doubles – 32	32	4	4	8	16
12/U & 14/U MASTERS	December	Singles – 16 Doubles – 8	12	1	0	3 (Winners of Nationals held in 2022 only)	0

GRASSCOURT & CLAYCOURT CHAMPIONSHIPS

FORMAT

Singles Main Draw

- 32 Players
- Monrad Draw (Guaranteeing 5 singles matches)
- One match per day

Doubles Main Draw

- 16 Teams
- Compulsory for all singles players
- Elimination Draw
- Doubles event to start on Day 3, with traditional doubles day (two rounds on this day)

Mixed Doubles Main Draw

- 16 Teams
- Optional for all singles players
- Elimination Draw
- Mixed Doubles event to start/finish on Day 3 (afternoon of traditional doubles day)
- One match-tiebreak format

ACCEPTANCE LIST BREAKDOWN

- 19 – Direct Acceptances (based on UTR)
- 3 – Winners of select State Championship events
- 8 – Qualifiers (1 per MA from closed state qualifying tournaments)
- 2 – National Wildcards (Decided by National Selectors for injured players or players will legitimate reasons not to meet league/tournament criteria.

HARDCOURT CHAMPIONSHIPS

FORMAT

Singles Main Draw

- 64 Players
- Compass Draw (Guaranteeing 6 singles matches)
- One match per day

Doubles Main Draw

- 32 Teams
- Compulsory for all singles players
- Elimination Draw
- Doubles event to start on Day 3, with traditional doubles day (two rounds on this day)

Mixed Doubles Main Draw

- Up to 32 Teams
- Optional for all singles players
- Elimination Draw
- Mixed Doubles event to start/finish on Day 3 (afternoon of traditional doubles day)
- One match-tiebreak format

ACCEPTANCE LIST BREAKDOWN

- 32 – Direct Acceptances (based on UTR)
- 16 – International Wildcards
- 4 – Winners of select State Championship events
- 8 – Qualifiers (1 per MA from closed state qualifying tournaments)
- 4 – National Wildcards (Decided by National Selectors for injured players or players will legitimate reasons not to meet league/tournament criteria.

WILDCARD OPPORTUNITIES

January Grasscourt Nationals (32-player draw)

- Winners of the designated Signature Series events will gain automatic entry into the Australian Junior Grasscourt Championships in January.

April Claycourt Nationals (32-player draw)

- Winners of the designated Signature Series events will gain automatic entry into the Australian Junior Claycourt Championships in April.

Sept/Oct Hardcourt Nationals (64-player draw)

- Winners of the designated Signature Series events will gain automatic entry into the Australian Junior Hardcourt Championships in September/October.

Positives – Provides relevancy for one major event in each state/territory per year. Also encourages players to travel interstate for major state championship events.

Signature Series events to be run in a consistent manner

- 32 Main Draw; 32 Qualifying Draw
- Players split into main draw and qualifying in order to provide level-based play throughout the event. Also provides a total of 56 players the opportunity to win through to the Nationals from the identified events.
- **Locations / Surface** of Signature Series Events and which Nationals it provides wildcards into can change from year-to-year. Initial locations chosen knowing availability of surfaces in each state/territory.

STATE CLOSED QUALIFYING EVENTS

Vic / NSW / Qld closed state/territory qualifying events

- Will offer a 30-player event over 4 days or two weekends.
- Tier B of 16 players playoff on Days 1&2 to 2 players. Those 2 players move into Tier A, which then play down to a winner on Days 3 & 4. Matches to determine positions 3 to 8 also played in case of withdrawals. Overall winner of the qualifying event to gain a place into the upcoming Nationals. No Direct Acceptance player into the Nationals should compete in the state closed qualifying event.

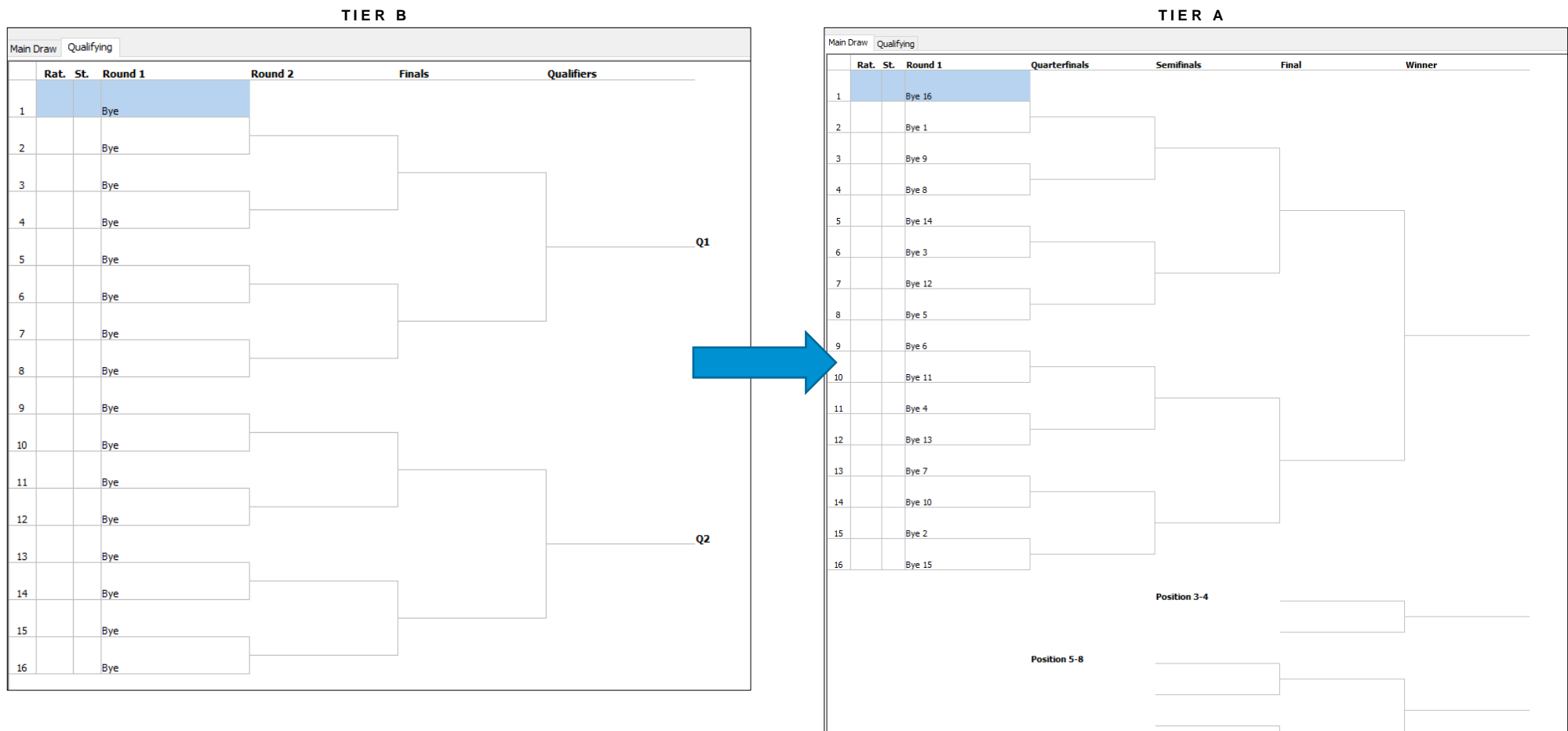
SA / WA closed state qualifying events

- Will offer a 22-player event.
- Tier B of 8 players playoff down to 2 players. Those 2 players move into Tier A, which then play down to a winner. Matches to determine positions 3 to 8 also played in case of withdrawals. Overall winner of the qualifying event to gain a place into the upcoming Nationals. No Direct Acceptance player into the Nationals should compete in the state closed qualifying event.

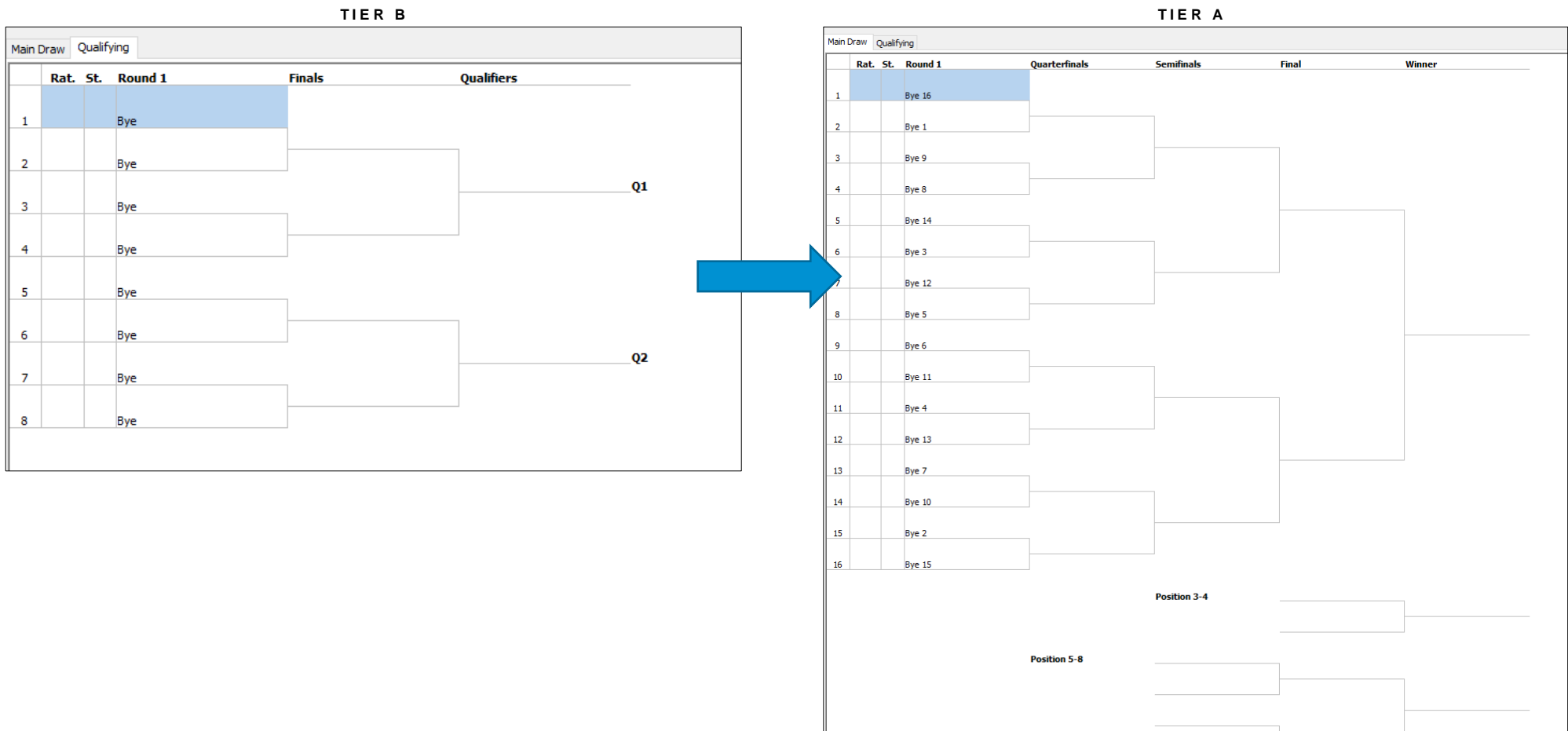
Tas / ACT / NT closed State/Territory qualifying events

- Will offer an 8-player event.
- Players will compete in one 8 player draw to determine a single winner. Matches to determine positions 3 to 8 also played in case of withdrawals. Overall winner of the qualifying event to gain a place into the upcoming Nationals. No Direct Acceptance player into the Nationals should compete in the state closed qualifying event.

STATE CLOSED QUALIFYING EVENTS – NSW / QLD/ VIC



STATE CLOSED QUALIFYING EVENTS – SA / WA



MASTERS

FORMAT

Singles Main Draw

- 16 Players
- Round-Robin Draw
- 8 Players move through to QFs, remaining players playoff for 9 to 16 positions
- One match per day. Players guaranteed 6 matches each.

Doubles Main Draw

- 8 Teams
- Compulsory for all singles players
- Elimination Draw
- Doubles event to be played throughout the event.

Mixed Doubles Main Draw

- 16 Teams
- Optional for all singles players
- Elimination Draw
- Mixed Doubles to be played throughout the event.

ACCEPTANCE BREAKDOWN

16 player Main Draw:

- 12 - Highest UTR at close of nomination period (End of October). Players invited by Tennis Australia to compete. Players have one-week to accept invitation. Move down the list until 12 positions are filled.
- 3 - Singles Winners from same-year National Championships (Grasscourts, Claycourts, Hardcourts)
- 1 - National Wildcard (determined by the Performance National Selectors).

If the same player wins multiple Nationals throughout the year, the additional positions will be added to the Direct Acceptance UTR positions.

NATIONAL SERIES – 16/U & 18/U AGE GROUPS

2022 EVENT SUMMARY

	TIMING	DRAW SIZE	DIRECT ACCEPTANCES	NATIONAL WILDCARDS RESERVED FOR SELECTORS	QUALIFIERS	INTERNATIONAL WILDCARDS RESERVED
16/U NATIONAL CHAMPIONSHIPS	December	Qualifying – 16* Singles – 32 Doubles – 24	20 or 24	4	4 or 8*	0
18/U NATIONAL CHAMPIONSHIPS	December	Qualifying – 16 Singles – 16 Doubles – 16	10	2	4	0

* TBC – If qualifying will be held on-site during the 16/u National Championships or locally in each state/territory

If there are any changes to the acceptance criteria or format for the 16/U & 18/U National Championships these will be communicated as required.

EVENT CRITERIA

JUNIOR

LEVEL EVENTS (TOURNAMENTS)	LOCAL 6 COMMUNITY SERIES	ZONE / REGION 5 JUNIOR DEVELOPMENT SERIES	ZONE / REGION 4 JUNIOR SERIES	STATE 3 PREMIER SERIES	STATE 2 SIGNATURE SERIES		NATIONAL 1 NATIONALS SERIES
					Open Qualifying	Closed Qualifying	
SINGLES DRAW SIZE	Main Draw: Based on rating band* *Max Draw Size: 32. Use multiple draws with rating bands if entries exceed 32.	Main Draw: Based on rating band* *Max Draw Size: 32. Use multiple draws with rating bands if entries exceed 32.	Main Draw: Based on rating band* *Max Draw Size: 32. Use multiple draws with rating bands if entries exceed 32.	Main Draw NSW, QLD & VIC: 32max SA & WA: 24** ACT, NT & TAS: 16** **Can increase to Draw size to 32 with interstate players.	Main Draw: 32max Qualifying: 32max	Main Draw NSW, QLD & VIC: 16max SA, WA: 16max ACT, NT, TAS: 16max Qualifying NSW, QLD & VIC: 16max SA, WA: 8max	Main Draw Clay & grass: 32max Hard: 64max
MATCH PLAY (formerly known as consolation draw)	Sign-In	Sign-In	Sign-In	Sign-In	Sign-In	Sign-In	Compulsory
DOUBLES DRAW SIZE	Main Draw Based on rating band* *Max Draw Size: 32. Use multiple draws with rating bands if entries exceed 32.	Main Draw Based on rating band* *Max Draw Size: 32. Use multiple draws with rating bands if entries exceed 32.	Main Draw Based on rating band* *Max Draw Size: 32. Use multiple draws with rating bands if entries exceed 32.	Main Draw: 16max	Main Draw: 32max	n/a	Main Draw Clay & grass: 16max Hard: 32max.
SINGLES SCORING FORMAT OPTIONS (in order of recommendation)	2 tie-break sets 3 FAST4 sets 3 short sets 2 FAST4 sets 2 short sets 1 tie-break set Timed sets	2 tie-break sets 3 FAST4 sets 3 short sets 2 FAST4 sets 2 short sets 1 tie-break set Timed sets	2 tie-break sets 3 tie-break sets 3 FAST4 sets 3 short sets 2 FAST4 sets 2 short sets	3 tie-break sets	3 tie-break sets	3 tie-break sets	3 tie-break sets
MATCH PLAY SCORING FORMAT OPTIONS (in order of recommendation)	2 tie-break sets 3 short sets 2 FAST4 sets 2 short sets 1 tie-break set Timed sets	2 tie-break sets 3 short sets 2 FAST4 sets 2 short sets 1 tie-break set Timed sets	2 tie-break sets 3 short sets 2 FAST4 sets 2 short sets	2 tie-break sets	2 tie-break sets	2 tie-break sets	2 tie-break sets
DOUBLES SCORING FORMAT (in order of recommendation)	2 tie-break sets 3 short sets 2 FAST4 sets 2 short sets 1 tie-break set Timed sets	2 tie-break sets 3 short sets 2 FAST4 sets 2 short sets 1 tie-break set Timed sets	2 tie-break sets 3 short sets 2 FAST4 sets 2 short sets	2 tie-break sets	2 tie-break sets	n/a	2 tie-break sets
DRAW FORMAT OPTIONS	Single Elimination (see Match Play info below) Monrad Compass Round Robin	Single Elimination (see Match Play info below) Monrad Compass Round Robin	Single Elimination (see Match Play info below) Monrad Compass Round Robin	Single Elimination (see Match Play info below) Monrad Compass Round Robin	Monrad	Single Elimination (see Match Play info below)	Monrad
MATCH PLAY DRAW FORMAT OPTIONS (If Single Elimination format is chosen for Main Draw)	Sign-In match play as required: Single Elimination Feed-In Round Robin	Sign-In match play as required: Single Elimination Feed-In Round Robin	Sign-In match play as required: Single Elimination Feed-In Round Robin	Sign-In match play as required: Single Elimination Feed-In Round Robin	-	Sign-In match play as required: Single Elimination Feed-In Round Robin	-
EVENT TYPE	Rating based	Rating based	Gender based Age based Rating based	Gender based Age based	Gender based Age based	Gender based Age based	Gender based Age based
ENTRY FEE RECOMMENDED NOT TO EXCEED	Singles \$40 Doubles \$20	Singles \$40 Doubles \$20	Singles \$50 Doubles \$25	Singles \$65 Doubles \$30	Singles \$65 Doubles \$30	Singles \$40	\$120 combined \$30 match footage
RECOMMENDED LENGTH	Max 5 days	1 to 3 days	2 to 5 days	Min 3 days	Min 3 days	2 days per tier	Max 7 days
CLOSING DATE	7 to 10 days	7 to 10 days	10 or 14 days	10 or 14 days	10 or 14 days	10 or 14 days	28 Days
ALLOCATION	At MA's discretion Must meet the criteria	At MA's discretion Must meet the criteria	At MA's discretion Must meet the criteria	1-2 per school holidays or 4-8 total (recommended)	1 per year	1 per National event	1 per Grand Slam surface
WINNER RECEIVES	-	-	-	Winner receives wildcard into year-end Signature Series Masters	Winner receives wildcard into next Nationals	Winner receives wildcard into next Nationals	-
VENUE	Can have blended lines Meet the ITF Recreational Club/Centre minimum standards Will be and remain affiliated with your MA Endorsement held by the affiliated club/centre	Can have blended lines Meet the ITF Recreational Club/Centre minimum standards Will be and remain affiliated with your MA Endorsement held by the affiliated club/centre	Minimum 8 courts across 2 venues Can have blended lines, with semi-finals onwards to be played on non-blended lines (recommended) Meet the ITF Recreational Club/Centre minimum standards Will be and remain affiliated with your MA Endorsement held by the MA	Minimum 10 courts across 2 venues Grand Slam surface only No blended lines (recommended) Meet the ITF Recreational Club/Centre minimum standards Will be and remain affiliated with your MA Endorsement held by the MA	Minimum 10 courts across 2 venues Grand Slam surface only No blended lines (recommended) Meet the ITF Recreational Club/Centre minimum standards Will be and remain affiliated with your MA Endorsement held by the MA	Minimum 10 courts across 2 venues Grand Slam surface only No blended lines (recommended) Meet the ITF Recreational Club/Centre minimum standards Will be and remain affiliated with your MA Endorsement held by the MA	Minimum 12 courts at 1 venue (clay & grass) Minimum 16 courts at 1 venue (hard) Grand Slam surface only No blended lines (recommended) Meet the ITF Recreational Club/Centre minimum standards Will be and remain affiliated with your MA Endorsement held by the TA

LEVEL	LOCAL 6	ZONE / REGION 5	ZONE / REGION 4	STATE 3	STATE 2		NATIONAL 1
EVENTS (TOURNAMENTS)	COMMUNITY SERIES	JUNIOR DEVELOPMENT SERIES	JUNIOR SERIES	PREMIER SERIES	SIGNATURE SERIES		NATIONALS SERIES
					Open Qualifying	Closed Qualifying	
GOVERNANCE	Complete endorsement application Confirm draws, score and formats with the matrix Conduct in accordance with TA policies	Complete endorsement application Confirm draws, score and formats with the matrix Conduct in accordance with TA policies	Complete endorsement application Confirm draws, score and formats with the matrix Conduct in accordance with TA policies	Complete endorsement application Confirm draws, score and formats with the matrix Conduct in accordance with TA policies	Complete endorsement application Confirm draws, score and formats with the matrix Conduct in accordance with TA policies	Complete endorsement application Confirm draws, score and formats with the matrix Conduct in accordance with TA policies	Complete endorsement application Confirm draws, score and formats with the matrix Conduct in accordance with TA policies
CHILD SAFETY	All Safeguarding Children documentation is collected and is current: Working with Children Check National Police Check	All Safeguarding Children documentation is collected and is current: Working with Children Check National Police Check	All Safeguarding Children documentation is collected and is current: Working with Children Check National Police Check	All Safeguarding Children documentation is collected and is current: Working with Children Check National Police Check	All Safeguarding Children documentation is collected and is current: Working with Children Check National Police Check	All Safeguarding Children documentation is collected and is current: Working with Children Check National Police Check	All Safeguarding Children documentation is collected and is current: Working with Children Check National Police Check
EDUCATION	-	-	-	Hold onsite education sessions during the event for: Players, Parents, Coaches, Officials, Integrity (TA to conduct)	Hold onsite education sessions during the event for: Players, Parents, Coaches, Officials, Integrity (TA to conduct)	Hold onsite education sessions during the event for: Players, Parents, Coaches, Officials, Integrity (TA to conduct)	Hold onsite education sessions during the event for: Players, Parents, Coaches, Officials, Integrity (TA to conduct) Provide parent / player social function where possible
SOFTWARE	Event conducted using TA approved software: Tournament Planner	Event conducted using TA approved software: Tournament Planner	Event conducted using TA approved software: Tournament Planner	Event conducted using TA approved software: Tournament Planner	Event conducted using TA approved software: Tournament Planner	Event conducted using TA approved software: Tournament Planner	Event conducted using TA approved software: Tournament Planner
OFFICIATING	Refer to Officiating Requirements table						
ENDORSEMENT PROCESS	Member Association	Member Association	Member Association	Tennis Australia	Tennis Australia	Tennis Australia	Tennis Australia

EVENT CRITERIA

OPEN

LEVEL	LOCAL	ZONE / REGION	STATE		NATIONAL*
	5	4	3	2	1
EVENTS (TOURNAMENTS)	COMMUNITY SERIES	OPEN SERIES	PREMIER SERIES	SIGNATURE SERIES	NATIONAL SERIES
SINGLES DRAW SIZE	Main Draw: Based on rating band. Max Draw Size: 32. Use multiple draws with rating bands if entries exceed 32.	Main Draw: Based on rating band. Max Draw Size: 32. Use multiple draws with rating bands if entries exceed 32.	Main Draw: 32max Qualifying: 32max	Main Draw: 32max Qualifying: 32max	Main Draw: 32max Qualifying: 32max
MATCH PLAY (formerly known as consolation draw)	Sign-In	Sign-In	Sign-In	Sign-In	Sign-In
DOUBLES DRAW SIZE	Main Draw: Based on rating band. Max Draw Size: 32. Use multiple draws with rating bands if entries exceed 32.	Main Draw: Based on rating band. Max Draw Size: 32. Use multiple draws with rating bands if entries exceed 32.	Main Draw: 32max	Main Draw: 32max	Main Draw: 32max
SINGLES SCORING FORMAT OPTIONS (in order of recommendation)	2 tie-break sets 3 FAST4 sets 3 short sets 2 FAST4 sets 2 short sets 1 tie-break set	2 tie-break sets 3 tie-break sets 3 FAST4 sets 3 short sets 2 FAST4 sets 2 short sets	3 tie-break sets	3 tie-break sets	3 tie-break sets
MATCH PLAY SCORING FORMAT OPTIONS (in order of recommendation)	2 tie-break sets 3 short sets 2 FAST4 sets 2 short sets 1 tie-break set	2 tie-break sets 3 short sets 2 FAST4 sets 2 short sets	2 tie-break sets	2 tie-break sets	2 tie-break sets
DOUBLES SCORING FORMAT (in order of recommendation)	2 tie-break sets 3 short sets 2 FAST4 sets 2 short sets 1 tie-break set	2 tie-break sets 3 short sets 2 FAST4 sets 2 short sets	2 tie-break sets	2 tie-break sets	2 tie-break sets
DRAW FORMAT OPTIONS	Single Elimination (see Match Play info below) Monrad Compass Round Robin	Single Elimination (see Match Play info below) Monrad Compass Round Robin	Single Elimination (see Match Play info below) Monrad Compass Round Robin	Single Elimination (see Match Play info below) Monrad Compass Round Robin	Single Elimination (see Match Play info below) Monrad Compass Round Robin
MATCH PLAY DRAW FORMAT OPTIONS (If Single Elimination format is chosen for Main Draw)	Sign-In Match Play as required: • Single Elimination • Feed-In • Round Robin	Sign-In Match Play as required: • Single Elimination • Feed-In • Round Robin	Sign-In Match Play as required: • Single Elimination • Feed-In • Round Robin	Sign-In Match Play as required: • Single Elimination • Feed-In • Round Robin	Sign-In Match Play as required: • Single Elimination • Feed-In • Round Robin
EVENT TYPE	Gender based Age based Rating based	Gender based Age based	Gender based Age based	Gender based Age based	Gender based Age based
ENTRY FEE RECOMMENDED NOT TO EXCEED	Singles \$75 Doubles \$30	Singles \$75 Doubles \$30	Singles \$75 Doubles \$30	Singles \$75 Doubles \$30	Singles \$75 Doubles \$30
RECOMMENDED LENGTH	Max 5 days	2 to 5 days	Min 3 days	Min 3 days	Min 3 days
CLOSING DATE	7 to 10 days	10 or 14 days	10 or 14 days	10 or 14 days	10 or 14 days
ALLOCATION	At MA's discretion Must meet the criteria	Align with State events where practical Be part of a larger swing of events Recommended 1-5 per school term* *Max of 80 events across the country	Align with International events, designed to support in between International swings Be the pinnacle of a Zone swing of events Historic standalone State event	Align with International events Designed to be a lead-in or lead-out opportunity	Align with International events Designed to be a lead-in or lead-out opportunity
VENUE	Can have blended lines Meet the ITF Recreational Club/Centre minimum standards Will be and remain affiliated with your MA Endorsement held by the affiliated club/centre	Minimum 8 courts across 2 venues Can have blended lines, with semi-finals onwards to be played on non-blended lines (recommended) Meet the ITF Recreational Club/Centre minimum standards Will be and remain affiliated with your MA Endorsement held by the MA	Minimum 10 courts across 2 venues Grand Slam surface only No blended lines (recommended) Meet the ITF Recreational Club/Centre minimum standards Will be and remain affiliated with your MA Endorsement held by the MA	Minimum 10 courts across 2 venues Grand Slam surface only No blended lines (recommended) Meet the ITF Recreational Club/Centre minimum standards Will be and remain affiliated with your MA Endorsement held by the MA	Minimum 10 courts across 2 venues Grand Slam surface only No blended lines (recommended) Meet the ITF Recreational Club/Centre minimum standards Will be and remain affiliated with your MA Endorsement held by the MA
GOVERNANCE	Complete endorsement application Confirm draws, score and formats with the matrix Conduct in accordance with TA policies	Complete endorsement application Confirm draws, score and formats with the matrix Conduct in accordance with TA policies	Complete endorsement application Confirm draws, score and formats with the matrix Conduct in accordance with TA policies	Complete endorsement application Confirm draws, score and formats with the matrix Conduct in accordance with TA policies	Complete endorsement application Confirm draws, score and formats with the matrix Conduct in accordance with TA policies
CHILD SAFETY	All Safeguarding Children documentation is collected and is current: • Working with Children Check • National Police Check	All Safeguarding Children documentation is collected and is current: • Working with Children Check • National Police Check	All Safeguarding Children documentation is collected and is current: • Working with Children Check • National Police Check	All Safeguarding Children documentation is collected and is current: • Working with Children Check • National Police Check	All Safeguarding Children documentation is collected and is current: • Working with Children Check • National Police Check
SOFTWARE	Event conducted using TA approved software: • Tournament Planner	Event conducted using TA approved software: • Tournament Planner	Event conducted using TA approved software: • Tournament Planner	Event conducted using TA approved software: • Tournament Planner	Event conducted using TA approved software: • Tournament Planner
ENDORSEMENT PROCESS	Member Association	Member Association	Tennis Australia	Tennis Australia	Tennis Australia
OFFICIATING	Refer to Officiating Requirements table				

* Not applicable for 2022.

PRIZE MONEY ALLOCATIONS

LEVEL	LOCAL	ZONE / REGION	STATE		NATIONAL*
	5	4	3	2	1
EVENTS (TOURNAMENTS)	Community Series	Open Series	Premier Series	Signature Series	National Series
SINGLES					
WINNER	17%	\$550	\$1200	\$2400	\$3200
FINALIST	8%	\$250	\$585	\$1170	\$1560
SEMI-FINALIST	5%	\$175	\$288	\$578	\$768
QUARTER-FINALIST	n/a	n/a	\$66	\$131	\$176
DOUBLES (per pair)					
WINNER	10%	\$300	\$750	\$1500	\$2000
FINALIST	5%	\$150	\$375	\$750	\$1000
TOTAL					
	100%	\$3000	\$7500	\$15,000	\$20,000
CONTRIBUTION					
TA CONTRIBUTION	0%	33.33%	50%	50%	100%
MA CONTRIBUTION	0%	33.33%	50%	50%	0%
CLUB CONTRIBUTION	100%	33.33%	0%	0%	0%

* Not applicable for 2022.

PROVISIONAL COMPETITIVE PLAY OFFICIATING REQUIREMENTS*

JUNIORS

LEVEL	LOCAL		ZONE / REGION	
	6		5-4	
EVENTS (TOURNAMENTS)	Community Series		Junior Development Series / Junior Series	
	EVENT	LEAGUE	EVENT	LEAGUE
REFEREE / VENUE SUPERVISOR	1 per venue	-	1 per venue	-
COMMUNITY OFFICIALS	1 per 4 courts	As required for the number of available courts	1 per 4 courts	As required for the number of available courts

OPEN

LEVEL	LOCAL		ZONE / REGION	
	5		4	
EVENTS (TOURNAMENTS)	Community Series		Open Series	
	EVENT	LEAGUE	EVENT	LEAGUE
REFEREE / VENUE SUPERVISOR	1 per venue	-	1 per venue	-
COMMUNITY OFFICIALS	1 per 4 courts	As required for the number of available courts	1 per 4 courts	As required for the number of available courts

*We have outlined a set of provisional officiating requirements. We are currently reviewing the impact of the recent ATO decision in regards to Officiating and the officiating requirements considered to support the new calendar composition. Final officiating requirements will be made available in the rules & regulations document published on 1 December 2021.