



# *Tennis Queensland Annual Report*

*2009/2010*



14 September 2010

Dear Queensland tennis community

It is with tremendous pride and satisfaction that, five years into my role as chief executive officer for Tennis Australia, I am able to report strong performance and great success in all areas of our business.

Nationally, some of our key priorities in the last year have centred on working cohesively within the tennis family and driving resources and ultimately consistent growth in grassroots tennis. Tennis Queensland is very much among the leaders in this space.

The game continues to grow and grow in the Sunshine State. Not stopping with the 2<sup>nd</sup> annual Brisbane International event at the wonderful Queensland Tennis Centre, this year has seen the six week Festival of tennis in Ipswich, the Copper City Regional Tennis Centre in Mt Isa and magnificent new facilities in Yeppoon and Cooee Bay.

In player development, we have consolidated our pathways, competitions and tournaments not only in Queensland but across the nation. We have a tremendous group of former players working with our best tennis prospects in a responsive athlete management system, designed to support the needs of individuals.

These actions have led to a talent like Queensland's own Samantha Stosur working closely with Fed Cup captain David Taylor and receiving support from TA's player agent, Paul Kilderry. This year Sam reached the final of the French Open, the first Australian woman to do so since Margaret Court triumphed in 1973. A career-high No.5 ranking followed shortly after as Sam became a genuine and consistent threat on the women's circuit.

With Lleyton Hewitt still a Grand Slam contender, we witnessed the arrival of Jason Kubler as world No.1 boys' junior in May and Ben Mitchell (both Queenslanders) reaching the final of the Wimbledon boys' junior championships. While we are proud of the fact that we have gone from six players in the top 250 in 2005, to 20 in 2010 we know there is still plenty of work to do and we are eager and determined to do it.

Looking ahead, participation and grassroots tennis remain key objectives. We now have 194,000 children (nearly 30,000 Queenslanders) participating in Tennis Australia's starter program, MLC Tennis Hot Shots. Thanks to the National Court Rebate scheme, more than 860 courts have been built or resurfaced over the past two years, which has led to a total investment of \$144 million in tennis facilities. These are prime examples of a co-ordinated approach at all levels of governance, paying handsome dividends in the community.

One who has been a passionate tennis lover all this life is Geoff Pollard who, in October, will step down as president of Tennis Australia after 20 years of service. Geoff's achievements and contributions to the game are outstanding, starting with his runner-up finish to John Newcombe in the 1961 final of the Australian Junior Championships. He is replaced by Sydney lawyer and Tennis NSW president Steve Healy who was elected to a three-year term.

The tennis story continues to evolve in new and exciting directions. We have come through some tough financial times and we continue to grow our numbers. The people who work in tennis throughout Australia are what make this such a dynamic and progressive sport. To all of Queensland tennis family, I say thank you for all your hard work and it is with great confidence that I look toward sharing the rest of the journey with you.

Steve Wood  
Chief Executive Officer, Tennis Australia

**Tennis Australia**  
Batman Avenue  
Victoria Australia  
Private Bag 6060  
Richmond Victoria 3121  
T +61 3 9914 4000  
F +61 3 9650 2743  
[www.tennis.com.au](http://www.tennis.com.au)

Lawn Tennis Association  
of Australia Limited  
ABN 61 006 281 125  
Trading as Tennis Australia



## Contents

President's Report .....	2
Highlights of 2009/10 .....	4
Tennis Queensland Organisational Structure .....	6
Tennis Australia & Tennis Queensland Purpose Pyramid .....	7
Chief Executive Officer's Report .....	8
Marketing and Communications Report .....	10
Community Tennis Report .....	12
Technical Services Report .....	16
Spotlight – Brisbane International .....	19
Spotlight – Davis Cup returns to Brisbane .....	20
Regional Assembly Reports .....	21
Tournaments Report .....	27
Player and Coach Development Report .....	29
Tournament Results .....	32
State Rankings (As at December 2009) .....	37
Tennis Queensland Partners .....	39
Director's Report .....	42
Auditor's Independence Declaration .....	46
Declaration by Director's .....	47
Independent Audit Report .....	48
Financial Statements .....	50
Finance Report .....	70
Board of Directors, Staff & Members .....	71
Office Bearers, Committees & Delegates .....	72
Affiliated Bodies – Financial Year 2009/10 .....	73

*Future Champions Presentation – Brisbane International*





## President's Report

*As President of Tennis Queensland, I am pleased to present this Annual Report to all stakeholders of tennis throughout the State.*

The past 12 months have been one of growth, prosperity and exceptional achievements for Tennis Queensland across all core business areas and the contributions being made by all stakeholders are setting us on the path for continued success.

Facility development continues to be our number one priority and this year saw the completion of the first of our five Regional Tennis Centres in Mt Isa. Officially opened by Minister for Sport, the Hon. Phil Reeves, this centre along with the remaining centres yet to be completed in Cairns, Townsville, Rockhampton and Toowoomba, are set to reinvigorate tennis throughout regional Queensland.

Without the tremendous support of the Queensland Government (Department of Communities), and local councils, these projects would not have been possible. Therefore we gratefully thank the Queensland Government for their encouragement, support and assistance with the construction of these world class tennis centres. Special thanks also to the Brisbane City Council and in particular, Councillor Jane Prentice and her team, for their ongoing support of Queensland Tennis.

Four former Grand Slam champions including Ana Ivanovic, Justine Henin and eventual winners, Andy Roddick and Kim Clijsters, headlined the Brisbane International 2010 illustrating the events' credibility and standing on the world stage. Attendance over the eight days was up by more than 16,000 from last years' event to just over 82,000 spectators which is testimony to the quality and popularity of the event and its organising team. Furthermore, I would like to congratulate Tournament Director, Stephen Ayles, and the Brisbane International team on winning the coveted Q-Sport (formerly Sports Federation of Queensland) – Event of the Year award for the Brisbane International (2009). A tremendous feat in their inaugural year. Thanks must go to Queensland Events (QEC) the Brisbane City Council (BCC), and Brisbane Marketing for their support during the Brisbane International.

2009/10 has also seen Tennis Australia significantly increase their support to Tennis Queensland and we would like to extend our appreciation to Tennis Australia's President, Geoff Pollard and his board of Directors with special mention of Vice

President Ashley Cooper, Director Chris Freeman, and Chief Executive Officer, Steve Wood. With the greater focus being on Community Tennis, and as grassroots programs continue to gather momentum, we can move forward with confidence.

Queensland's juniors have continued to impress on the international scene and it brought me great pleasure to be a part of the inaugural "Future Champions Presentation" on Pat Rafter Arena, Monday night 4th January, as part of the Brisbane International. 33 of Queensland's top performing juniors were recognised as players that had excelled on the National and International stage.

My congratulations to the whole National Academy Brisbane team who have continued to play a crucial role in conjunction with the private coaches to help many of Queensland's leading juniors to produce exceptional results both domestically and abroad.

After ten years, Davis Cup tennis made a welcome return to Brisbane and started a new chapter at the new 'Home of the Greats', the Queensland Tennis Centre. Conducted from 7-9 May 2010, Australia's top players including Lleyton Hewitt, Peter Luczak, Paul Hanley and Carsten Ball defeated Japan 5-0 in front of nearly 12,000 avid tennis fans over the three days.

Tennis has remained a firm fixture in regional communities and the profile of tennis appears to be on the increase after Tennis Australia, Tennis Queensland and the Regional Assemblies joined forces to develop and implement a generic TV promotional campaign targeting junior players. It was conducted around the time of the Australian Open 2010 in the Far North, North, Central & South regions and directed viewers to a series of "Come and Try" days being held by affiliates. The success of this campaign was largely due to the efforts of the participating affiliates who supported the initiative.

Life Membership is reserved for individuals who, in the eyes of the Board of Directors feel that their contribution is worthy of this honour and during the year Life Membership was bestowed on two deserving recipients. Maurice Philp was Tennis Queensland President from 1998-2004 and was committed to developing prudent financial management



and rebuilding Tennis Queensland's financial reserves. He was the instigator of much change and was also primarily responsible for developing and delivering professional governance to the organisation.

Mal Anderson's recognition was long overdue. Since Mal's playing days, he has been heavily involved in the development of Queensland's juniors through his involvement with numerous Tennis Queensland Player Development committees and boards. However he is most renowned for delivering junior clinics and showcasing high level tennis throughout regional areas of the state through the *Mal Anderson Exhibition Tours*. These tours have been running for almost 30 years and are an integral part of the Tennis Queensland calendar. We conservatively estimate that Mal has directly exposed tennis to over 90,000 junior players through these exhibition tours alone. This is in addition to the many thousands of kids he has coached as part of his regular coaching business.

To Maurice and Mal, the tennis community would like to thank you for all that you have given and all that you continue to give to tennis in Queensland.

Tennis Queensland has some wonderful sponsors and corporate partners who we would like to thank for their support throughout the year. In particular Xstrata Coal who, in February 2010, announced a new three year agreement aimed at providing more tennis opportunities for people living in Xstrata communities in North and Central Queensland. We look forward to maintaining these strong relationships and creating new ones in the future.

It is with great sadness that I report the passing of two wonderful women from iconic tennis families. Lisa Orford (nee Argent) and Kylie Frawley both succumbed to cancer during 2009. The thoughts of the entire Queensland tennis community go out to their respective families.

I would also like to extend my gratitude to the Board members of Tennis Queensland who invested time and effort during the period ensuring the growth of tennis continues in Queensland. They include; Ian Rodin, Ross Rolfe, Mike Ford, Robert Newton, Annie Lyons,

Shane O'Kane, Murray Whitbread, Jim Kennedy AO, Doug Kingston, and Leonie Taylor.

Finally, thank you to our CEO, Tom Larner and the staff at Tennis Queensland who have contributed to the success of tennis in our state, through their ongoing hard work and dedication over the last year.

Together with our stakeholders, we are well on our way to achieving our vision of *"making tennis a part of life for every Queenslanders."*

**KEN LAFFEY**  
PRESIDENT





## Highlights of 2009/10

- Four former world number one's headlined the Brisbane International 2010 including Andy Roddick, Kim Clijsters, Justine Henin and Ana Ivanovic. Such big names ensured strong interest with attendance figures surpassing its 2009 figure by 16,000 with more than 82,000 attending the 2010 event.
- Davis Cup tennis made a welcomed return to Brisbane at the 'Home of the greats', the Queensland Tennis Centre. Conducted from the 7-9 May 2010, Australia's top players including Lleyton Hewitt, Peter Luczak, Paul Hanley and Carsten Ball defeated Japan 5-0 in front of nearly 12,000 avid tennis fans over the three days.
- In February 2010, Xstrata Coal and Tennis Queensland announced a new 3 year agreement that will provide more opportunities for people living in Xstrata communities in North and Central Queensland to access tennis. By providing the necessary knowledge, coaching services, resources and equipment and by offering ongoing support, the community will have the tools to maintain the program independently.
- Tennis Australia, Tennis Queensland and the Regional Assemblies joined forces to develop and implement a tennis TV promotional campaign targeting juniors. It was conducted around the time of Australian Open 2010 in the Far North, North, Central & South regions and directed viewers to a series of come and try days being held by affiliates on a common day.
- Queensland hosted 8 national championships and 2 Junior ITF events in 2009/10, this figure is unprecedented and is a direct result of the development of new world class tennis facilities and Queensland's reputation for running professional and well organised tournaments.
- The Brisbane International (2009) claimed the coveted Q-Sport (formerly Sports Federation of Queensland) – Event of the Year award and more recently also claimed the ATP Tours' – Excellence Award for Marketing and Promotion.



- Tennis Queensland Life membership was bestowed on tennis great Mal Anderson, and former president Maurice Philp.
- The first ever Ipswich Festival of tennis (held over 6 weeks) which incorporated 12/U nationals, 14/U nationals, the Gallipoli ITF, Grade 4 ITF and the City of Ipswich Pro Tour ITF Event.

### *2009/10 saw the completion of the following major facilities constructions / upgrades:*

- Copper City Regional Tennis Centre in Mt Isa (an RTFP project) with 8 Synpave courts (2 re-constructed and 6 resurfaced) plus a new Clubhouse with a kiosk / kitchen, pro shop, offices, amenities and associated facilities and extended car parking areas.
- Yeppoon Tennis Club with 8 new courts (4 Laykold Cushion Plus and 4 Synthetic Grass) plus a new Clubhouse with a kiosk / kitchen, pro shop, offices, amenities and associated facilities and car parking.
- Cooee Bay Progress & Sports Association with 5 new Rebound Ace multi-sport courts – which adjoins the aforementioned new Yeppoon Tennis Club facility.
- Samford Tennis & Netball Centre with 4 new Plexicushion tennis courts, 4 netball courts plus a new Clubhouse and car parking.

### *Queensland juniors continued to excel on the national and international stage capturing multiple titles including the following:*

- *Bernard Tomic* – won through to the 2nd round of the Australian Open and also won the Burnie ATP Challenger. On the junior tour, Tomic won the US Open Junior Championships reaching a career high junior ranking of #2. Bernard Tomic made his Davis Cup debut for Australia in Melbourne





- *Jason Kubler* – winner of 6 ITF Junior Titles and reached a ranking high of #1 in the world for 18/U players on the ITF Junior Tour. Kubler was the #1 player in the Australian Junior Davis Cup Team that won the world finals in Mexico. In April 2010, Kubler achieved his first ATP Ranking by making the final of the Ipswich Pro-Tour event. During the period he was also the winner of the 18/U Australian Championships.
- *Ashleigh Barty* – winner of an ITF Grade 4 Event and was a finalist in the Gallipoli Youth Tennis Cup ITF Grade 4 event. She also was the winner of the 14/U Autumn Clay Court and 16/U Autumn Clay Court National Championships and represented Australia in the 14/U World Junior Tennis Qualifying Event.
- *Ben Mitchell* – finalist of the Wimbledon Junior Boys Championships and winner of an ITF Grade 1 event in Thailand
- *Sophie Letcher* – finalist in the \$25k ITF Pro-Tour Event in Ipswich
- *Mark Richards* and *Josh Barrenechea* each won ITF Grade 4 events
- *Lyann Hoang* and *Andrea Dikosavljevic* represented Australia in the 14/U World Junior Tennis Qualifying Event – they qualified for the world finals in the Czech Republic
- *Travis Boon, Monika Wejnert, Akira Santillan and Naiktha Bains* all claimed National Singles titles
- *Queensland Bruce Cup Team* won the National Primary Schools Competition for the third year in a row and became only the second team since the 1960's, and the first since 1981 to achieve such a feat.
- Queensland Girls dominated the Australian Team Championships taking out titles for the 12/U (Margaret Court Cup), 14/U (Mary Hawton Cup) and 18/U (Wilson Cup) age groups.
- Queensland also claimed the Lynton Cup Boys 18/U.



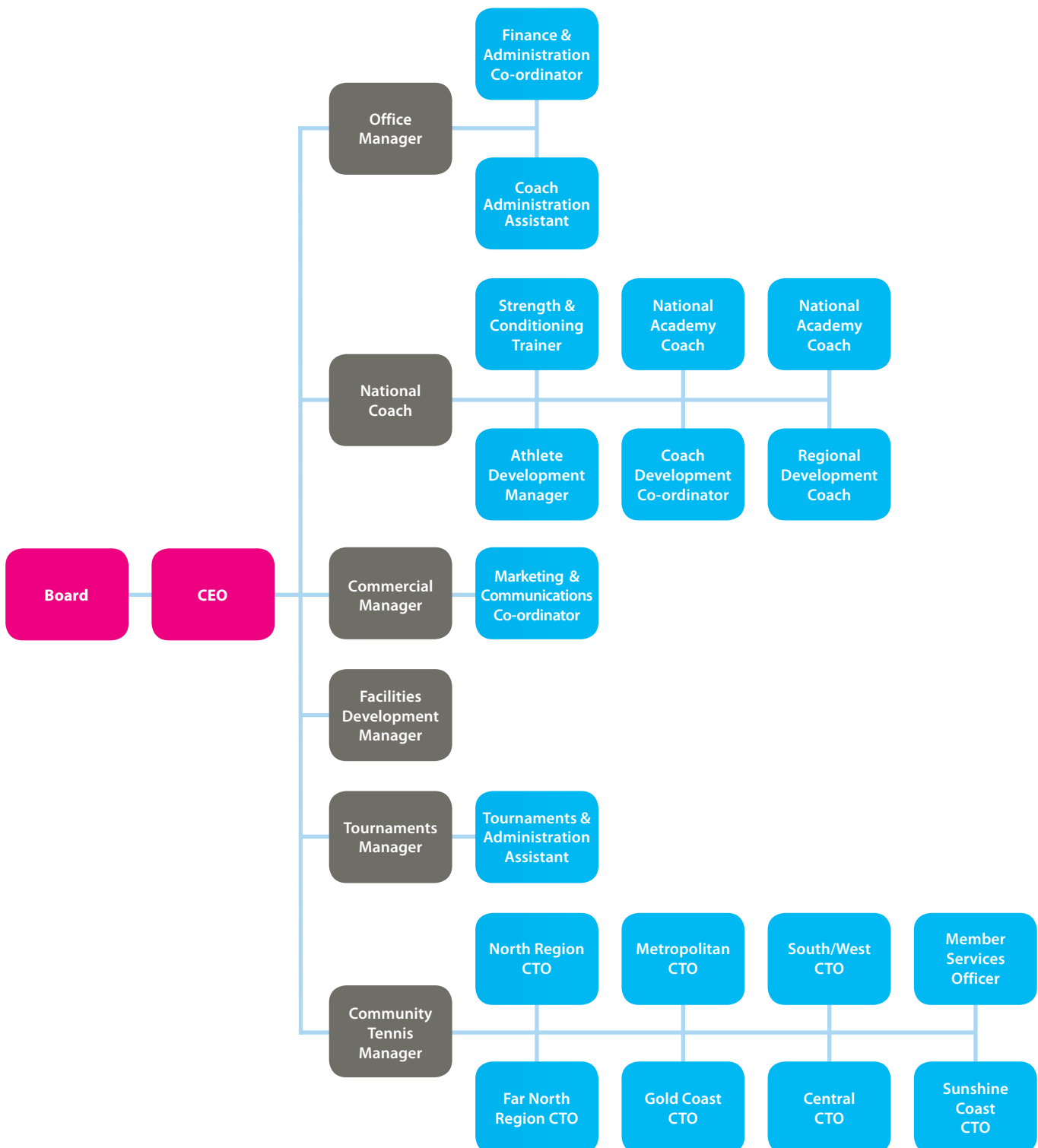
### *In addition... 2009/10 by numbers*

- **620,000** – The record number of hits the Tennis Queensland website experienced (up by 80% from the previous record which was set in 2008/09).
- **50,000** – The number of children from all over the state that participated in a MLC Tennis Hot Shots program at 147 venues.
- **29,000** – The number of primary school children were involved in the MLC Tennis Hot Shots Tennis in Schools Program.
- **6,714** – The number of players competing in the seventy-two Junior Master Circuit tournaments.
- **400+** – The number of TA Coach Members delivering coaching programs at the coal face.
- **88** – The number of new courts scheduled for completion in 2010/11 with the majority being under the Regional Facilities Program.
- **42** – The number of participants from all over the world that played in the ITF Queensland Wheelchair Open which was held during the Brisbane International.
- **21** – The number of Affiliates who received a grant from Heritage Building Society Community Tennis Grants program.
- **7** – The number AIS Scholarships given to Queenslanders (out of a possible 16).
- **5** – The total number of major National Teams titles won by Queensland teams (of a possible 10).





## Tennis Queensland Organisational Structure







# Tennis Australia & Tennis Queensland Purpose Pyramid

*Why we exist*

**Our Purpose:**

Making Australia the greatest tennis nation on the planet

*What we do*

**Our Formula for Success:**

**Great Champions**

Create champions – the mark of a great tennis nation. More highly ranked players and more Grand Slam champions.

**Active Players**

Spread the love of tennis within the community. More people playing more tennis more often.

**Devoted Fans**

Build the buzz of tennis – supporters and potential players. More people attending more tennis events. More people engaged with tennis and tennis brands.

**Invest in the Game**

Build sustainable resources to invest in the growth of the game. More money to grow more fans, more players and more champions.

*How we work*

**Our Promise, Our Way:**

**Bringing a competitive edge**

We are disciplined and aspire to be the best

**Giving awesome service**

We don't settle for ok or average

**Daring to be different**

We are not afraid to step forward and try new things

**Playing as a team**

We listen, develop, include and coach each other

**Creating magical experiences**

We know how to entertain and have some fun

**Celebrating greatness**

Success breeds success! We celebrate greatness in our people, our partners and our champions past, present and future

*Immediate Priorities*

**Our Strategic Priorities:**

**Champions**

More champions and depth across all levels

**Infrastructure**

More and better national infrastructure

**Grass Roots**

Building and delivering (more) effectively to the 'grass roots'

**Alignment**

Getting the tennis community (internal and external to Tennis Australia) aligned behind our purpose pyramid to make the image of tennis in Australia more relevant & compelling

**Uncertain economic conditions**

Make prudent business decisions in a volatile market



## Chief Executive Officer's Report

*It brings great pleasure to present to all Tennis Queensland's Annual report for the past for 2009/10. It has been both an extremely hectic, but also particularly satisfying year.*

The past twelve months has witnessed the hosting of the second Brisbane International, a Davis Cup tie, ongoing facility development, fantastic results in player development and a firm focus on community tennis and participation.

January 2010 witnessed the second addition of the Brisbane International. The event was again a great success and saw considerable growth from the inaugural event. Spectator numbers increased by 24% to in excess of 82,000 and the event attracted a world class field led by the 2010 Champions, Andy Roddick and Kim Clijsters. The Women's final between Kim Clijsters and Justine Henin was undoubtedly one of the best women's matches of recent times. I congratulate Stephen Ayles, Tournament Director of the Brisbane International and his team for putting on an outstanding event and look forward in anticipation to a bigger and better 2011 Brisbane International. This event is critical to the promotion of our sport in Queensland and provides a great opportunity for all Queenslanders to witness world class tennis.

In May 2010, Tennis Australia selected the Queensland Tennis Centre to host the first Davis Cup tie in Brisbane since 2000. In excess of 11,000 people attended over the three days to see Australia whitewash Japan 5-0 and earn the right to playoff for a spot in the World Group. It was also the first time since 2000 that former world number 1, Lleyton Hewitt had played in Brisbane. The tie was a resounding success and we look forward to the opportunity of hosting a Fed Cup tie with Sam Stosur leading the team in her home state.

The \$16m Regional Tennis Facilities Program is nearing completion with the Mt Isa facility being officially opened by the Minister for Sport, Phil Reeves in March 2010. The remaining facilities in Cairns, Townsville, Rockhampton and Toowoomba will all be officially opened in the coming year. The success of the Program has been validated by Tennis Australia's decision to host a key Davis Cup tie at the brand new Cairns International Tennis Centre in September 2010. This would not be possible without the tremendous contribution of both the State Government and the Cairns Regional Council. These new major facilities will be unrivalled in Australia and will be capable of holding major events, in addition to acting as first class community venues.

The focus of Tennis Queensland is now firmly on growing participation within our sport. Tennis Australia and Tennis Queensland are working collaboratively to drive participation throughout the state. National participation programs such as MLC Hotshots will be complemented by state specific initiatives to assist in having more people play more tennis more often. Tennis Australia have committed an extra \$395k per year over three years assist Queensland on growing participation in our state. This considerable support will provide the resources tennis needs to maintain growth in participation.

Through a difficult economic period, it is pleasing to report Tennis Queensland achieved a strong operating net surplus for the year to 30 June 2010. Prudent financial management and emphasis growing revenue streams has ensured that Tennis Queensland remains in a position to continue to develop the sport. Tennis Queensland produced an overall net deficit of \$0.6m incorporating capital payments in relation to the Queensland Tennis Centre and the Regional Tennis Facilities Program. The coming year will see the final contribution made in relation to the Regional Tennis Facility program.

Ongoing growth and development of our sport cannot be achieved without the support of our partners. The State Government and Tennis Australia have been active partners and great supporters of tennis in Queensland. The commitment of these two bodies has generated further growth in our sport through the development of facilities and the hosting of major events with Queensland twice hosting the Davis Cup in 2010. I would also like to offer our thanks to our sponsors and corporate partners for their ongoing support. This support has resulted in strong growth in our community programs, tournaments and player development assistance. In particular, thanks must go to Xstrata, Stanwell and Coca Cola Amatil. Xstrata have entered into a new three year partnership focusing on the development of tennis in regional areas and promoting an active healthy lifestyle. These long term partnerships have been extremely successful throughout regional Queensland providing an entry into tennis and a pathway for our elite juniors. They have been a great success.

Queensland's proud history in developing outstanding tennis players and strong focus on elite player development has seen in Queensland continuing to punch above its



weight. The National Academy – Brisbane continues to nurture Queensland’s best young talent. The past year has seen four athletes transition from the National Academy – Brisbane to the Australia Institute of Sport, bringing Queensland’s representation to almost 50% of AIS athletes. Jason Kubler reached the peak in world junior tennis by becoming the number 1 player in the world on the ITF Junior Tour, whilst a host of young Queenslanders have claimed National titles in their age groups over the past twelve months including Kubler, Ashleigh Barty, Monika Wejnert, Travis Boon, Akira Santillan and Naiktha Bains. Congratulations to all these players, the National Academy staff and the private coach network for this fantastic result.

It was with great sadness I advise that I have resigned as CEO of Tennis Queensland and will finish up in August 2010. It has been a fulfilling two and a half years in the role and I would like to thank all those who have supported me over this period to make this time so enjoyable and rewarding. I believe our team has made great strides in continuing to grow the sport and I look forward to Tennis Queensland’s continued success in the coming years. I would like to thank the Board of Tennis Queensland for their ongoing support and direction, in particular, Ken Laffey who has worked tirelessly as President with great success.

Tennis Queensland has a talented and dedicated group of staff who have worked very hard over the past year. These staff work in a dynamic environment and have all contributed to the ongoing development of the sport in Queensland. I thank all our staff for their hard work not just for the past year but for my time at Tennis Queensland and look forward to their contribution over the coming year. Most importantly, thanks must also go to the wider group of individuals who volunteer their time for the betterment of the sport, those who don’t always receive due recognition.

I would also like to take the opportunity to welcome Cameron Pearson as the new Chief Executive Officer of Tennis Queensland and Tournament Director of the Brisbane International. Cameron brings with him a wealth of tennis experience as a player, coach and administrator and joins Tennis Queensland from Tennis Australia. I have no doubt that Cameron’s expertise will continue to drive tennis’ growth throughout all of Queensland.

This coming year will be one of continued growth for tennis in Queensland. It will witness the completion of spectacular new facilities throughout Queensland, the first Davis Cup tie to be hosted in Cairns at the new Cairns International Tennis Centre, and we look forward to the third Brisbane International being the most successful to date. I wish Tennis in Queensland very success.

A stylized, handwritten signature in black ink, appearing to read 'T. Lerner', with a long horizontal flourish extending to the right.

**TOM LARNER**  
CHIEF EXECUTIVE OFFICER





## Marketing and Communications Report 2009/10

*The marketing and public relations department at Tennis Queensland continues to increase the awareness and exposure of the many benefits associated with tennis in Queensland.*

The marketing component of the department is responsible for studying the market place and targeting customers while also deciding the best way to reach these customers, and works with the rest of the company to help determine the new product/service needs of the market.

The communications aspect of this department is the first point of contact for the media, which is responsible for writing and distributing press releases related to tennis tournaments or anything related to tennis in Queensland.

The department is also responsible for the communication of Tennis Queensland's corporate aims and objectives in conjunction with Tennis Australia's brand guidelines through the production of, for example, promotional material ranging from flyers to brochures, the Tennis Queensland website and other publications.

### Brand tennis

Tennis Queensland continues to drive the tennis brand and activate the new tennis message in order to strengthen relationships with our customers and stakeholders. This area has developed greatly over the last year as Tennis Australia rolls out the broader use of the visual language and other brand assets. Tennis Queensland is committed to ensuring that consistency exists across all marketing campaigns throughout the state.

### Tennis Queensland Awards Night

The 10th Annual Tennis Queensland Awards night celebrating the achievements of 2009 was held at the Queensland Tennis Centre on Saturday 20th March 2010. The night is designed to recognise the achievements of players and volunteers throughout the year and celebrate their continued involvement. The successful event was a sell out with 180 people in attendance. Craig Willis was the MC once again and the guest speakers included; The Hon. Phil Reeves, MP Minister for Child Safety and Minister for Sport, Cr Jane Prentice representing the Lord Mayor of Brisbane and Cr David Morrison representing the Lord Mayor of Ipswich. A panel discussion featuring Mal Anderson, Geoff Masters and Scott Draper kept the crowd entertained and a highlight of the night was the Life Membership presentation for Mal Anderson and Maurice Philp.

### Congratulations to all the award winners:

Award	Recipient
Senior Player of the Year	Neville Halligan
Junior Player of the Year	Bernard Tomic
Administrator of the Year	Anne- Marie Lawlor
Affiliated Body of the Year	Innisfail Tennis Club
Parent(s) of the Year	Peter & Peta Davis
Tournament of the Year	Bruce Lynton BMW Rosebowl Championships
Athlete of the Year (player with a disability)	Ben Baker
Eddie Machin Scholarship	Lizette Cabrera
Geoffrey E. Griffith Order of Merit	Ross & Allen Smythe

### Brisbane International

Leveraging from the Brisbane International continues to be a high priority for Tennis Queensland. Daily competitions were run which also provided valuable marketing research information. Daily website updates cross promoting the Brisbane International with highlights were uploaded on the Tennis Queensland website.

Other new activities included Affiliate Rewards Program, Future Champions Presentation and TQ Family Day (see "Spotlight on Brisbane International" for more details on these).

MLC Hot Shots and National Academy demonstrations were also conducted between matches to showcase some of our development programs.

### Down the Line

The popularity of this e-newsletter is evident in the number of subscriptions which steadily increase per month. The number of Down the Line members is 5635, an increase of 1200 people over the period. Covering a range of topics, Down the Line provides local tennis clubs with the opportunity to showcase their facilities in the regular 'Spotlight on an Affiliated body' feature article, which promotes talented tennis players and other current news in the tennis community.



### **Social Networking**

Several Facebook pages have been launched to encourage interaction and communication between Tennis Queensland and the tennis community. Utilising social networking provides an effective avenue to cross promote upcoming events and direct traffic to our website.

### **[www.tennis.com.au/qld](http://www.tennis.com.au/qld)**

Tennis Queensland's website is arguably its primary communications tool to members and stakeholders. The Tennis Queensland website offers a window to a variety of Queensland tennis information including club development, tournament results, entry forms, player development and Queensland specific tennis news. The popularity of Tennis Queensland's website has also experienced large growth, with the hit rate based on the previous year from 350,000 to 620,000. Interest around major events (Brisbane International and Davis Cup) continue to drive traffic through the site.

### **Player Registration Booklet**

The Marketing Department in conjunction with Community Tennis successfully negotiated a deal with "The Entertainment Book" to produce our player registration package for 2010. This new partnership has greatly enhanced the value of Tennis Queensland registration by delivering tangible benefits to members.

### **Regionalised TV Promotion**

A generic TV campaign designed to recruit new junior players was conducted around the time of the Australian Open in the Far North, North, Central & South regions. This campaign was jointly funded by Tennis Australia, Tennis Queensland and the Regional Assemblies. The commercial directed viewers to a series of "Come and Try" days held by affiliates.

### **Sponsorship Procurement**

The marketing and public relations department procures and manages a range of sponsorships, which provide cash and equipment for Tennis Queensland programs and events. In 2009/10 we welcomed new sponsors HEAD, Hamilton Lighting, Heritage Building Society, Plexicushion and Sportswear Qld. These sponsors along with our existing partners (listed on pages 39-41) have ensured that junior players state wide are given opportunities to participate in our sport at all levels.

### **Ambassador Program**

This program has been designed to bring together past and present champions of tennis. By keeping these high profile sports people informed of the latest developments, we can request their support to help foster the growth and development of tennis state-wide. Several affiliated bodies took advantage of this program in 2009/10, utilising ambassadors for events including official openings, fundraising dinners and open days.

### **Adopt a Brick**

The 'Adopt a Brick' program was developed as a fund raising initiative associated with the Queensland Tennis Centre whereby members of the public were given the opportunity to adopt a brick that will become part of an especially designed wall adjacent to the hitting wall at the Queensland Tennis Centre. The program raised in excess of \$270,000 which was used as part of the capital improvements to the Queensland Tennis Centre. The official plaque unveiling was conducted on Thursday, 11th of March, 2010. On the day, Ashley and Helen Cooper were especially recognised for their significant donation.

### **Tennis Industry Council**

This group is made up of interested parties in the tennis supply industry. It serves as a two-way relationship – keeping industry members up to date with happenings in the Queensland tennis community and forging relationships with potential sponsors. This council was resurrected in 2009/10 and new members were invited to attend a function on March 11, 2010.





## Community Tennis Report

*The Community Tennis Department focuses on participation and membership of tennis in Queensland, developing and implementing state, national and local programs and strategies to increase higher participation levels.*

These programs and strategies are designed to make tennis accessible and readily available to people of all ages and abilities, allowing tennis to be a part of life for every Queenslander. Not only does this offer positive health benefits to players and communities, it also assists in the development of future champions through national grassroots programs and pathways.

Community Tennis oversees affiliation and registration processes for all players and affiliates, allowing affiliated bodies (clubs, centres and associations) to access a range of benefits including; assistance from Community Tennis Officers in all 8 regions, resources and access to programs, funding, and insurance. Registered persons can also take advantage of important benefits such as priority booking for major events, access to free workshops, courses, tournaments, events, and player accident insurance.

### Club Affiliation and Membership

A total of 244 clubs, centres and associations were directly affiliated with Tennis Queensland in 2009, and at the end of December 2009 there were 19,620 registered players (12,584 seniors and 7,072 juniors).

As at 30 June 2010, affiliated bodies totalled 232 and 14,086 registered players were recorded (8,939 seniors and 5,147 juniors). Around 30% of affiliates utilise Baseline, which is the official online player registration program.

The new MY TENNIS system is proposed to be implemented in the second half of 2010. This is designed as an interactive "user friendly" program, projected to communicate more effectively with current members and provide a better platform for people to register with Tennis Queensland.

### Community Tennis Officers (CTO) Program

Seven full-time Community Tennis Officers (CTO's) were employed from July 2009 to June 2010 to service the eight regions. North Queensland (North Region) was given their own CTO, (separating the Far North and North Regions) which was widely received by all affiliates. Two CTO workshops in Brisbane were conducted throughout December 2009 and May 2010. These workshops consisted of training programs in the following areas; registration compliance processes, MLC Tennis Hot Shots in Schools program, MLC Hot Shots Coloured Ball Challenge events, national programs, facility development and planning including Benchmarking (CERM survey's), Tennis Queensland Development Grants and the Active After School Care (AASC) program. CTO's also received training on new programs and resources that will be implemented in 2010. These include MY TENNIS, Competitions Planner and the Your Tennis Tool Kit along with the resources they will bring to all affiliates and CTO's.

### MLC Hot Shots Tennis in Schools Program

For the period of July 2009 until June 2010, 110 schools and over 29,000 primary school children were involved in the MLC Tennis Hot Shots Tennis in Schools Program. This program forms tennis pathways for school children by providing various levels of modified lessons/challenge events. By matching the needs of different player standards and ages, MLC Hot Shots creates a positive tennis experience for all. Readily made accessible equipment, national advertising and support from Tennis Australia have enabled MLC Tennis Hot Shots Deliverers to provide quality experiences for Queensland primary school students. Tennis Queensland also increased MLC Tennis Hot Shots opportunities by providing further funding in regional and remote locations.



### **Heritage Building Society Community Grants Program**

A total of 43 applications were received for the Community Tennis Grant Program in 2009/10. Tennis Queensland approved 21 applications totalling \$19,950 to assist with participation activities for all ages, open days for clubs and affiliates, modified fixture programs, and "Come and Try days". The focus of the Development Program for 2009/10 was to encourage participation and player registration. Heritage Building Society's contribution to the program has enabled further support of the above community initiatives.

### **Regional Initiatives Program**

A total of \$57,554 was allocated to initiatives enhancing tennis in each of the Tennis Queensland regions. This program is administered by the Regional Assemblies and provides them with an opportunity to develop programs tailored to the needs of those delivering tennis at the coal face. Initiatives conducted during the period included enhancement of competition opportunities, participation programs and equipment for regional use.

### **Tennis Queensland Mal Anderson Exhibition Tours**

2010 saw an exciting year for the Mal Anderson Exhibition Tours, with four tours travelling from the Far North to the South West of Queensland. Mal Anderson worked closely with all the Community Tennis Officers, affiliates and coaches from all the regions for each of the tours. His enthusiasm and love for the game remained evident in each trip he attended.

This was reflected in the success of the tours, which combined with MLC Hot Shots Tennis in Schools Programs and club exhibition matches. Some of the young players who travelled on the tours with Mal were; Jamiee Gilbertson, Elizabeth James, Cory Jacobs and Travis Dragojlo. Mal's continued involvement in the Exhibition Tours, ensures ongoing support and opportunities for regional school children across the state.

### **Xstrata – Regional Development Centre Program**

Since 2006, Tennis Queensland has enjoyed a terrific relationship with Xstrata through the "Xstrata Regional Development Program". The program is a partnership aimed at enhancing regional-based tennis programs that reflect local community needs, particularly in relation to junior development opportunities. This initiative is one of the largest development projects ever undertaken by Tennis Queensland and many communities have benefited from the partnership between Tennis Queensland and Xstrata.

This is set to continue with the announcement of a new agreement between Xstrata Coal and Tennis Queensland. Launched in February 2010, Tennis Queensland and Xstrata will provide more opportunities for people living in Xstrata communities to access tennis. By providing the necessary knowledge, coaching services, resources, equipment and ongoing support, the community will have the tools to maintain the program independently.

This new program will commence in the new financial year and is set to benefit the following communities; Glenden, Collinsville, Abbot Point, Bowen, Mackay, Springsure, Rolleston, Tieri, Middlemount, Capella, and Emerald.





## Community Tennis Report (CONT.)

### Junior Masters Circuit

The 2009 Tennis Queensland Junior Masters Circuit experienced a 9.5% decrease in participant numbers across the state with an average of 95 players per event compared to 2008, where the average was 105 players per event. Seventy-two tournaments were held in Queensland during 2009 involving 6,714 players. The addition of MLC Tennis Hot Shots Coloured Ball Challenge events (run in conjunction with Junior Masters Circuits events) has proven to be very successful, as it caters for a younger age group of tennis enthusiasts. Due to the inclusion of these younger aged events, we look forward to seeing a considerable rise in the participation of future Junior Masters Circuit events

### Indigenous Tennis Program

Tennis Queensland continued its partnership with the Gulf Sport & Recreation Association to deliver ongoing programs in several indigenous communities within the Gulf region. These programs have included introductory coaching programs, competitions, tournaments, fixtures, and coach education. A total of 261 children participated in three community programs and a further 155 in five school programs.

### MLC Tennis Hot Shots

MLC Tennis Hot Shots is the national grassroots program aimed at children aged 5 to 12 years. The program saw over 190,000 participants nationally, including over 50,000 children from Queensland (overachieving the state's KPI anticipated participation figures by 149.9%).

MLC Tennis Hot Shots is now available at 147 venues across Queensland through the involvement of 78 coaches. MLC Tennis Hot Shots Coloured Ball Challenge events continue to give players a pathway from coaching into competition and tournaments, with 10,556 kids taking part in Colour Ball competition since July 2009.

### Disabilities Program

New events continue to be offered as part of the Tennis Queensland Disabilities Program, with the development and implementation of wheelchair training sessions held on a weekly basis at the Queensland Tennis Centre. Ongoing training has assisted in the development and growth of the Tennis Queensland Disabilities Program, through Professional Development Wheelchair Tennis workshops, and the separation of Intellectually Disabled (ID) and Wheelchair players Mini Circuits.

Wheelchair Mini Circuits were attached to the selected monthly state squads run by Andrew Ash at selected tennis centres throughout the South East. Intellectually Disabled Mini Circuits saw numbers increase dramatically through the re-ignited relationship with Special Olympics (SO). The Tennis Queensland Mini Circuit Calendar of events is developed for players with any disability which also assists growth through the new relationships formed with the Deaf Society of Queensland, Rehab centres, Life Stream (who will deliver tennis in schools for children with learning difficulties) and Special Olympics.







Wheelchair Tennis Tournaments continued to take big steps throughout the year, with the majority of Australian Money Tournaments (AMT) now including Open Wheelchair events. The annual ITF Queensland Wheelchair Open was moved to the Queensland Tennis Centre, and held during the Brisbane International. The event was a great success, and provided maximum exposure for wheelchair tennis during Queensland's most prestigious tournament, the Brisbane International.

Tennis Queensland conducted its inaugural Queensland Open for Players with an Intellectual Disability. It included a total of 37 players from Queensland, New South Wales and Victoria travelling to the event.

Scott Rawlings was also appointed as the Deaf and Hearing Impaired State Coach for Deaf Sport and Recreation Queensland (DSRQ). Along with Scott, Warwick Nicol was selected to assist the State Disabilities Coach Andrew Ash, as the Assistant State Wheelchair Coach. A special mention must go to Andrew Ash for all his hard work to promote wheelchair tennis, and we congratulate him on being selected to coach the Australian team in the World Team Cup.

### *Zonal Coaches Subsidy Program*

Assistance continues to be provided for identified coaches in Western Queensland who deliver coaching in remote areas where no other tennis services are available.

Affiliated bodies in the north and central zones of the West Region were visited between three to four times during the financial year of 2009. However, as both incumbent coaches left their positions at the conclusion of 2009, no zonal coaching circuit activity was undertaken during the first half of 2010.

A new coach for the West Region Central Zone was appointed in April 2010.





## Technical Services Report

The technical services department (including the activities of the Technical Services Advisory Group and the commercial "Court Tech" business) assists in promoting our sport by contributing to the improvement of facilities for players.

This is achieved by supporting affiliated bodies, Local Government and schools in areas of technical assistance, advice and consultancy services.

Technical assistance and advice can be provided on all matters relating to tennis, from questions as simple as clarification of court size to more complex matters such as court lighting standards or construction specifications. Consultancy activities (on a fee for service basis) are regularly performed by the Technical Services Department under the business name of "Court Tech".

These consultancy activities include:

- Site inspections and the preparation of technical reports and/or recommendations
- Lighting analysis reports
- QS Certified cost estimates (for forward planning/budgeting purposes or to support funding applications)
- Design reviews and advice
- Tender reviews and recommendations
- Project Management services (for new facilities or upgrades to existing facilities).

With the continuation of Tennis Australia's popular National Court Rebate Scheme this year, it remains a requirement for all applicants to be reviewed by the Technical Services Department (which is offered at no cost) before they are forwarded to TA for assessment.

The activities of the Technical Services Department continue to be overseen by Michael Blomer, Tennis Queensland's Facilities Development Manager. In addition to managing the Technical Services Department, Michael is also the Program Manager for the Regional Tennis Facilities Program (RTFP). This is a major joint funding initiative by the State Government and Tennis Queensland, and aims to improve the quality of tennis facilities in regional Queensland.

A brochure for the "Court Tech" business, outlining our full range of services and associated fee scale, is distributed to all affiliated bodies in their annual 'affiliation pack'. A copy of this brochure is also available for download from Tennis Queensland's web site. Court Tech's services are continued to be offered to our affiliates at considerably discounted rates compared with our standard commercial rates for non-affiliated clients.

In the 2009/10 financial year, the following additional significant projects were completed:

- *Copper City Regional Tennis Centre* in Mt Isa (an RTFP project) with 8 Synpave courts (2 re-constructed and 6 resurfaced) plus a new Clubhouse with a kiosk / kitchen, pro shop, offices, amenities and associated facilities and extended car parking areas.
- *Yeppoon Tennis Club* with 8 new courts (4 Laykold Cushion Plus and 4 Synthetic Grass) plus a new Clubhouse with a

Plans for the Cairns International Tennis Centre





kiosk / kitchen, pro shop, offices, amenities and associated facilities and car parking.

- *Cooee Bay Progress & Sports Association* with 5 new Rebound Ace multi-sport courts – which adjoins the aforementioned new Yeppoon Tennis Club facility.
- *Samford Tennis & Netball Centre* with 4 new Plexicushion tennis courts, 4 netball courts plus a new Clubhouse and car parking.

### Looking to the Future

In addition to these completed projects, the following major facilities (including the remainder of the Regional Tennis Facilities Program projects) are expected to be completed in the next 12 months:

- *Cairns International Tennis Centre* (an RTFP project) with 12 new Plexicushion courts and 4 Plexipave mini-courts plus a 2 storey Clubhouse with a Player's Lounge, Pro Shop, Gym, Café and community meeting rooms.
- *Kalynda Chase Regional Tennis Centre* in Townsville (an RTFP project) with 10 new Plexipave courts plus a Clubhouse with a Player's Lounge, Pro Shop, Gym, Café and community meeting rooms.
- *Victoria Park Regional Tennis Centre* in Rockhampton (an RTFP project) with 19 new Plexipave courts (already completed) plus a Clubhouse with a Player's Lounge, Pro Shop and Café.
- *Toowoomba Regional Tennis Centre* at the University of Southern Queensland (an RTFP project) with 12 courts (9 new Plexicushion courts and 3 existing courts upgraded and resurfaced with Plexicushion) plus a 2 storey Clubhouse with a Player's Lounge and Pro Shop.

Toowoomba Regional Tennis Centre Plans



- *Megavalis Sports Grounds* in Biloela with 6 new Plexipave courts (as stage 1 of a 10 court complex) plus a shared Amenities / Covered Shelter buildings with the adjoining new Netball courts.
- *Redcliffe Tennis Association* – reconstruction of the 10 existing courts plus 2 additional courts (6 Plexicushion and 6 Synthetic Grass) as well as a new Clubhouse with a Pro Shop and Café.
- *Southport State High School* – demolition of the existing courts and construction of 8 new courts (4 Plexipave courts, 2 Synthetic Grass and 2 Plexipave multi-purpose courts).
- *Anglican Church Grammar School* at East Brisbane with 7 new courts plus a new 2 storey Clubhouse with a Player's Lounge / Meeting Room, Canteen and Office.

In addition to these major facilities, there have also been a number of smaller facilities that have been constructed/upgraded in the past year, with more planned for the year ahead.

This year has seen Sport and Recreation review their various funding programs. As a result, only a Minor Facilities Infrastructure Grants Program (for projects up to \$400,000) was made available, and applications closed in April 2010. The successful applicants under this Program are expected to be announced in July 2010, although it is expected to be difficult for a large number of tennis projects to be successful as there was a massive number of applications received for the \$11 million available in this round of funding.

In the years ahead, it is envisaged that our network of Regional and Sub-Regional Tennis Centres will need to be expanded. Tennis Queensland, in conjunction with Tennis Australia's National Facilities Blueprint, has developed a Facility Development Strategy to identify where we should be locating our high quality Regional Tennis Centres throughout the state.

In Queensland, we have identified the indicative locations for approximately 15 of these facilities, based primarily on current and predicted demographics and taking into account existing tennis facilities in these areas. In comparison with the other states, Queensland is leading the way in this regard by virtue of the work currently underway on a number of these facilities under the RTFP and some of the other major projects either under construction or being planned.



## Technical Services Report (CONT.)

### National Court Rebate Scheme Applications

Queensland affiliates have received a reasonable proportion of the funding available under this Scheme on a national basis since its inception. It is expected a number of the previously stated major tennis centres currently under construction will be successful in also apply for and hopefully receive funding under this Scheme once they have been completed.

### Court Inspections, Reports and other Consultancy Services

More than 20 requests for fee paying court inspections and other consultancy services were undertaken by "Court Tech" during the reporting period. Many of these were requests for Quantity Surveyor certified estimates to be submitted with various funding applications, and particularly with the round of Minor Facilities Infrastructure Grants that closed in April 2010.

In addition to these fee paying services, ongoing design assistance was provided to the following projects in the past year:

- *Brisbane City Council* with their proposed new Emerson Park Tennis Centre project at Grange and the recently completed Shaw Park Tennis Centre at Nundah.
- *Ipswich City Council* with the proposed development of a new Sub-Regional Tennis Centre at Springfield and the recently completed George Alder Tennis Centre at Ipswich.
- *Griffith University* with their recently completed tennis centre at their Mt Gravatt campus.

- *Rockhampton Regional Council* and the Yeppoon Tennis Club with the recently completed new 8 court centre in Yeppoon.
- *Banana Shire Council* with the design and construction of a new 10 court facility at the Megavalis Sports Grounds in Biloela.
- *Moreton Bay Regional Council* with their recently completed new tennis centre at Samford Valley and their soon to be completed redevelopment of the Redcliffe Tennis Centre.

### Project Management

Following on from the successful project management of two projects at the Cooroy Tennis Club in 2006 and 2008, Court Tech has subsequently provided (or is still providing) similar services to the following projects:

- *Coolum Tennis Club* – upgrading the 4 acrylic courts at this 6 court facility (works completed in October 2009).
- *Southport State High School/Labrador Tennis Club* – demolition and re-construction of 8 tennis and multi-purpose courts (works expected to be completed by October 2010).
- *Tannum Sands Tennis Association* – demolition of 2 existing courts and construction of 4 new courts (awaiting confirmation of funding sources and Council Development Approval).

The scope of these services generally involve the preparation of design specifications and drawings, followed by the calling of tenders and an evaluation of the submissions received, project supervision as well as advice to the client on material and surface choices.

Playing on the new Rockhampton tennis courts



### Technical Manual

The Technical Services Department's "Technical Manual for the Design, Construction and Maintenance of Tennis Facilities", is available for download and public comment on Tennis Queensland's website. It is continually updated and revised to reflect technological improvements and latest practices. Tennis Australia has been provided with an electronic copy of this document and has adopted this manual for use on a national basis.





## Spotlight – Brisbane International

*Broadcast in 133 countries, and viewed by more than 3.3 million people in Australia, the Brisbane International is now entrenched in the psyche of Australian sport.*

Enthralling encounters over eight days were witnessed by 82,257 spectators, stamping the tournament a huge success on the international tennis circuit. The calibre of players was strong as Queensland sent a message to the tennis fraternity that the best preparation for the first Grand Slam of the year was in Brisbane.

Four former Grand Slam champions including Ana Ivanovic, Justine Henin and eventual winners Andy Roddick and Kim Clijsters began their Australian Open assault in Brisbane. Australia's Peter Luczak, Jelena Dokic, Alicia Molik and Casey Dellacqua were also present as was Queenslanders, Bernard Tomic and John Millman. Millman, in his debut ATP Tour event.

Rated a well-organised and professionally operated tournament by the players, commentators and spectators alike for the second year running, the combined event has cemented its future at the beginning of the Australian Open Series.

In the men's singles Andy Roddick claimed victory over defending champion Radek Stepanek 7-6(2) 7-6(7) in a final lasting more than two hours.

In the women's, Kim Clijsters claimed an epic Brisbane International final over life-long rival Justine Henin. The dream all-Belgian decider lived up to its billing and more with the pair slugging it out for two hours 23 minutes in a tense thriller.

Kim Clijsters' popularity has always been high in Australia but she won over even the hardest of hearts after claiming the Brisbane International title. After the epic three-set final, she donated her prize money to Brisbane's Royal Children's Hospital after being touched by the hardship of young cancer patients on a visit to the hospital a week before.

During the period the inaugural Brisbane International (2009) claimed the coveted Q-Sport (formerly Sports Federation of Queensland) – Event of the Year Award and more recently also claimed the ATP International Group – Excellence Award for Marketing and Promotion.

Leveraging from the Brisbane International continues to be a high priority for Tennis Queensland. Priority Access to the event proved extremely popular for Tennis Queensland registered Members.

### **Other Tennis Queensland initiatives included:**

**Future Champions Presentation** – 33 of Queensland's top performing junior players were recognised on Pat Rafter Arena Monday night 4th January as part of the inaugural 'Queensland's Future Champions' presentation which recognises the outstanding performances of our top juniors throughout the preceding year.

**TQ Family Day** – An estimated 1,400 people attended the inaugural Tennis Queensland Family Day on the 1st January. Attendees enjoyed a free day of tennis activities and exhibitions. Coinciding with the first day of qualifying of the Brisbane International, the day featured Andy Roddick, Marcos Bagdahtis, Justine Henin, James Blake, Daniela Hantuchova, Scott Draper, Casey Dellacqua, Nicole Pratt as well as Queensland juniors, Travis Boon and Ash Barty. The day also served as an opportunity to recognise the passing of Lisa Orford who lost her battle with breast cancer in September 2009. In all, over \$2,200 was collected with all proceeds going to the Kim Walters Choices Program.

The 2011 event will commence on January 2. For more information visit [www.brisbaneinternational.com.au](http://www.brisbaneinternational.com.au).





## Spotlight – Davis Cup returns to Brisbane

*After ten years, Davis Cup tennis made a welcomed return to Brisbane at Queensland Tennis Centre, 'Home of the greats.'*

Conducted from 7 May – 9 May 2010, Australia's top players including Lleyton Hewitt, Peter Luczak, Paul Hanley and Carsten Ball defeated Japan 5-0 in front of nearly 12,000 avid tennis fans over the three days. Played out on a specially-built clay court at Pat Rafter Arena, this history-making contest at the world class Tennyson facility marked the beginning of a new chapter in Australian Davis Cup tennis.

Making the most of his disrupted French Open countdown, Hewitt pleasantly surprised fans at Pat Rafter Arena when he walked out to play on the Sunday with Australia holding an unbeatable 3-0 lead. This was the first time since 2000 that Hewitt had made himself available for a dead rubber, ironically, the last time a Davis Cup tie was held in Brisbane.

Tennis Queensland assisted with the promotion of the Davis Cup in four areas being; e-notifications and updates to members; local business promotions; affiliate ticket offer; website updates.

For the "Affiliate Special Ticket Offer" 120 Tennis Queensland affiliates were each given four complimentary tickets to attend the Davis Cup in return for assisting with promoting the event to their members. Affiliates could use the tickets however they pleased but were encouraged to run a competition for their members or reward some of their hard working volunteers. These tickets were made available as part of the commercial agreement between Tennis Australia and Tennis Queensland.

Thirty local businesses in the Yeronga and Graceville areas were given a promotions pack including green and gold streamers, balloons, DC posters and caps. In return businesses were asked to display these items and help promote the event. 11 businesses supplied their email address to receive updates on the latest news from the event.

### Results

Match	Score
<b>Rubber 1</b> Lleyton HEWITT (AUS) Def Tatsuma ITO (JPN)	6-3 6-3 6-2
<b>Rubber 2</b> Carsten BALL (AUS) Def Yuichi SUGITA (JPN)	6-3 6-4 6-4
<b>Rubber 3</b> Paul HANLEY / Lleyton HEWITT (AUS) Def Go SOEDA / Takao SUZUKI (JPN)	7-5 6-4 6-0
<b>Rubber 4</b> Lleyton HEWITT (AUS) Def Yuichi SUGITA (JPN)	7-5 6-2
<b>Rubber 5</b> Carsten BALL (AUS) Def Tatsuma ITO (JPN)	6-3 7-6





## Regional Assembly Reports

### FAR NORTH

#### OFFICE BEARERS

<i>Chairperson:</i>	Jeff King Koi
<i>Vice Chairperson:</i>	Mike Ernst
<i>Secretary:</i>	Vacant
<i>Treasurer:</i>	Vacant
<i>Regional Member:</i>	Jeff King Koi
<i>Community Tennis Officer:</i>	Janine Jenner-Bruno

#### Highlights / Achievements

- Australian Open Advertising Campaign – 250 participants attending in Edmonton
- Davis Cup Tie – Australia Vs Belgium – secured for the 17-19 September 2010
- North Queensland Suncorp Games – Inclusion in Suncorp games with 14 teams participating
- \$6m Cairns International Tennis Centre – to be completed in mid August
- Innisfail & District Tennis Association – winning TQ Affiliate of the Year.

#### Regional Summary

The major area of improvement for the region has been in facilities, with the construction of an international tennis facility in Cairns. The highly anticipated Cairns International Tennis Centre will be completed in mid August, and a month of festivities in September has been planned – including a Davis Cup Tie between Australia and Belgium.

The Innisfail and District Tennis Association won the Affiliate of the Year Award at both the Far North Queensland and Tennis Queensland Award ceremonies.

*Cory Jacobs (front left) and Travis Dragojlo (back right) and participants on the North Regional Exhibition Tour*



The North Queensland Suncorp Games attracted 14 teams, and included players from Cairns, Atherton, Mareeba, Innisfail, Gordonvale and Ingham.

Following on from Stanwell's support of the regions' top juniors the change in focus towards community and participation initiatives is set to deliver tremendous benefit to the region and will complement our exciting direction.

Regional coaches have worked tirelessly to increase the number of registered players in the region, with many of these coaches working together to help increase the number of competitors in the 2010 Junior Masters Circuit.

The region would like to thank the contributions made by major partners and sponsors, the Queensland Government, Cairns Regional Council, Stanwell and Regional Queensland Events.

### NORTH

#### Office Bearers

<i>Chairperson:</i>	Graham Wicks
<i>Vice Chairperson:</i>	Walter Morris
<i>Secretary:</i>	Steve Merker
<i>Treasurer:</i>	Alan Harris
<i>Regional Member/s:</i>	Alan Harris & Graham Wicks
<i>Community Tennis Officer:</i>	Janine Jenner-Bruno / Liz Jones (June 2010)

#### Highlights / Achievements

- Lizette Cabrera (from Townsville) made the Australian girls team (14/U) to tour France
- Junior Masters Circuit – Overall increase in participant numbers for the period
- Mid North Queensland Junior Championships (Mackay) AR event recorded 155 entries
- Appointment of a Community Tennis Officer for the North Region.

#### Regional Summary

In relation to facilities, the construction of the Kalynda Chase Regional Facility in Townsville has started, with foundations and footings now in place. Western Suburbs Tennis Club also has two new courts under construction, which are moving ahead well.

Our juniors continue to excel on the national stage. Lizette Cabrera reached Australian No.1 in her age group during the



## Regional Assembly Reports (CONT.)

period and Lizette and Seth Siriya (both from Townsville) were also members of the victorious Queensland team that won the National Bruce Cup Primary School Championships. The region is committed to junior development and continues to provide assistance to elite junior players.

The Mal Anderson Exhibition Tour was a great success, visiting schools and clubs in Townsville, Home Hill, Ayr, Collinsville, Calen and Bowen.

The Regional Assembly continues to provide financial support to the Open tournaments in the region through the "Bonus Pool" initiative with some success. Whilst the numbers for the NQ Open were slightly down this year the Ingham Open held strong with 140 entries (equalling last year).

We would like to thank all our sponsors and supporters and in particular Xstrata for their tremendous support of junior player development in the region and our Xstrata communities are excited about new program announced in 2010.

**Graham Wicks**, Chairperson

### CENTRAL

#### OFFICE BEARERS

Chairperson:	Murray Whitbread
Vice Chairperson:	Pat Peach
Secretary:	Paul Bampton
Treasurer:	Glenn Vickery
Regional Members:	Murray Whitbread and Glenn Vickery
Community Tennis Officer:	Ken Hick

*2010 Central Region Hotshots/Young Guns Squad at the Regional Camp in Rockhampton's new Regional Facility. With coaches Matt Richards, Murray Whitbread, Rob Beak and Bevan Mullholland*



#### Highlights / Achievements

- Two new major facilities with 19 new courts and clubhouse in Rockhampton as well as 8 new courts and clubhouse in Yeppoon
- A very successful 2009 Head Queensland State Age at Rockhampton
- Great volunteers throughout the region who continue to conduct a successful CQ Junior Masters Circuit, as well as other events such as the Gladstone AMT, Rockhampton Town and Country Teams, Bundaberg Open Age, Emerald ITN event, Bundaberg AMT and various Seniors events such as Bundaberg, Gladstone, Rockhampton and Dawson Callide Valley.
- The continued success of the RKF Engineering Central Region "Champion of Champions".

#### Regional Summary

The Central Regional Assembly holds a two day workshop each year to develop strategies that help grow tennis in our Region. Programs such as the Elite Junior Squad and Central Hotshots/Young Guns have resulted from such workshops. In addition to these initiatives, the Regional Assembly also helps to fund the Central Region "Champion of Champions" event, the Emerald ITN event and the CQ Junior Masters Circuit.

The HEAD Queensland State Championships is the jewel in the crown with the Regional Assembly turning this event into one of the best events in Queensland. The success of this event can be attributed to continuous play draws in the singles event which guarantees all players plenty of matches.

Our coaches help support scheduled regional events and are also involved in areas such as MLC Tennis Hotshots, MLC Tennis Hotshots in Schools and the Hotshots/Young Guns Program.

The Central Region receives tremendous support from the following sponsors; Head, Tropical Auto Group and RKF Engineering as well as many minor sponsors who continue to support tennis in the region. These programs would not be possible without their generous support and the region owes a debt of gratitude to all our great sponsors.

As Chairperson of the Central Region I would like to thank the key stakeholders from the Clubs and Associations who help provide tennis to our members in the region and help promote the sport in general. I would also like to thank the Regional Assembly Committee and our Community Tennis Officer Ken Hick for their hard work and dedication.

**Murray Whitbread**, Chairperson





## SUNSHINE COAST REGION

### OFFICE BEARERS

<i>Chairperson:</i>	Anne Lyons
<i>Vice Chairperson:</i>	Arthur Ziakas
<i>Treasurer:</i>	Trish Radulovic
<i>Regional Members:</i>	Anne Lyons and Arthur Ziakas
<i>Community Tennis Officer:</i>	Donna Timm

### Highlights / Achievements

- Launch of new Sunshine Coast Tennis website [www.sunshinecoasttennis.org.au](http://www.sunshinecoasttennis.org.au)
- Australian Open Come and Try day Promotion – 21 Affiliated Bodies participated in the RIP Initiative
- Hotshots In Schools – over 4500 Primary students through program
- Increase in membership registrations

### Regional Summary

The Sunshine Coast Region has the state's second largest registered membership base, with 48 affiliated bodies. The diversity of these groups result in very different individual developmental needs, as is obvious when considering facilities vary from small 2 court community centre's to 10 plus court national standard facilities.

Facility development remains the common denominator. While the input from tennis professionals play an important role in achieving these goals, we cannot afford to underestimate or ignore the imperative contributions made by our band of volunteers in the club/committee structure. The resurgence of tennis in the small community of Witta is a prime example, with its new clubhouse, resurfaced court, and vibrant tennis atmosphere. This is the result of efforts from a small band of volunteer tennis enthusiasts – grassroots tennis.



Our Region is fortunate in the number and calibre of tennis coaches actively engaged with Tennis Queensland. One Hot Shots deliverer made an effort in seeing over 1800 students in smaller hinterland and rural schools.

*Who Wins? Tennis!*

We acknowledge, and sincerely thank the many groups and individuals whose contributions combine to make tennis one of the premiere sports in this region. The region received sponsorship from SHRED-X Document Disposals, Domino's Pizza and Subway for our Junior Masters Circuit, while the Sunshine Coast Regional Council promoted local tennis at club level and the Kawana Tennis Club provides our Tennis Queensland CTO with a 'home' in the Sunshine Coast Region. We finally wish to acknowledge local businesses and the many volunteers who provide their invaluable support to promote and help deliver tennis to our community.

**Anne Lyons**, Chairperson

## METROPOLITAN

### OFFICE BEARERS

<i>Chairperson:</i>	Warwick Nicol
<i>Vice Chairperson:</i>	Peter Davis
<i>Regional Members:</i>	Ashley Cooper AO, Milton Rothman & Margaret Daniels
<i>Community Tennis Officer:</i>	Elia Hill

### Highlights / Achievements

- Involvement of 50+ coaches attending the second Brisbane International Coaches Conference
- The tremendous success of some of our juniors in the past 12 months including Jason Kubler and Ashleigh Barty
- Registered members within the region grew substantially due to the increase in Affiliated bodies within Metro region
- Forming stronger relationships and programs for all types of players ranging from juniors to seniors, and disability groups.

### Regional Summary

2009/10 has been another big year for tennis in the Metropolitan Region. After a huge 2008/09 year with the inaugural Brisbane International and the opening of the Queensland Tennis Centre tennis has gone from strength to strength. Registered numbers are up, affiliated bodies have increased, and the number of courts in the Metropolitan region has increased. The Metropolitan Regional Assembly, its delegates and most importantly the members of each affiliated body have contributed greatly to the growth of this sport. The MRA's Regional Initiatives Program focused on creating further opportunities for more people, and on-court development sessions, and programs such as the



## Regional Assembly Reports (CONT.)

Tournament Improvement program have helped coaches increase their skills.

The Metropolitan region would like to acknowledge the contributions made by their affiliates, Metro's Community Tennis Officer Elia Hill, and all the staff at Tennis Queensland. Many of these groups have assisted our region in implemented tennis initiatives and events such as the Seniors Come n Try Day, Junior Masters Circuit and the integration of wheelchair events into open tournaments.

A big thank you must also go to the Regional Members for their ongoing support. The region would not continue to grow in the manner in which it has over the past year without the ongoing support from Tennis Queensland so from all of the Delegates and members within the region a special thank you to all involved behind the scenes.

**Warwick Nicol**, Chairperson

### GOLD COAST

#### OFFICE BEARERS

<i>Chairperson:</i>	Bruce Beitey
<i>Secretary:</i>	Blake Taylor
<i>Treasurer:</i>	Stephen Kua
<i>Regional Member/s:</i>	Mike Ford and Natasha Kersten
<i>Community Tennis Officer:</i>	Nathan Griffiths

#### Highlights / Achievements

- The Inaugural Gold Coast Junior Teams Camp and subsequent QLD Junior Teams Carnival victory
- Gold Coast Tennis Open Day
- Pilot Junior Apprentice Circuit (Hot Shots)
- Successful SRQ Major Grant application – 8 new courts Labrador Tennis Club/Southport SHS

*Darren Cahill presents to coaches at the Brisbane International*





### Regional Summary

The Gold Coast region has enjoyed numerous successes in the past year. Creating partnerships with councils, state government, sport governing bodies and improving transparency, communication, feedback and discussion continues to see us making gains in the sport.

With outstanding performances from our local players, the region won three major championships including; Rockhampton Junior Masters State Titles, Qld Junior Teams Carnival, and the Qld Pizzey Cup. Individually, Bernard Tomic and Sam Stosur experienced tremendous international success which ensured that tennis continues to be a presence in the media spotlight. Our seniors' excelled locally and hosted two major events – the Australian Seniors titles and Queensland State Titles, whilst our players dominated at the Fred Perry Cup in Mexico.

Our grassroots programs must also be highlighted as the MLC Tennis Hot Shots in schools continues to gain

momentum. Many proactive coaches are establishing beneficial relationships with schools, which is increasing the number of children playing tennis. The 9/U Green Ball Challenge, continues drive participation in Queensland's second largest Junior Masters Circuit. The inaugural Gold Coast Junior Teams Camp supported by regional legends Mayor Ron Clarke and Grand Slam Champion Geoff Masters was a hit.

Our Regional Assembly is experiencing increased attendance at meetings, which allows for greater communication and dialogue which no doubt has improved capacity to deliver regional initiatives. Congratulations to all of the clubs, centres, volunteers and coaches who continue to give their time to the greatest sport on earth.

We'd like to thank our valued sponsors, in particular, Taylor Byrne for their ongoing support of the Junior Masters Circuit.

**Nathan Griffiths** for **Bruce Beitey**, Chairperson

*QLD Junior Teams Carnival Winners – Gold Coast*





## Regional Assembly Reports (CONT.)

### SOUTH

#### OFFICE BEARERS

<i>Chairperson:</i>	Allen Smythe
<i>Vice Chairperson:</i>	Stephen Murphy
<i>Secretary:</i>	Don Bell
<i>Treasurer:</i>	Ross Smythe
<i>Regional Member:</i>	Ross Smythe
<i>Community Tennis Officer:</i>	Richard Toye

#### Highlights / Achievements

- Construction of Toowoomba Regional Tennis Centre – USQ to commence in 2010
- Inaugural Junior Athlete Development Program implemented with good results in first year
- South Region player registration numbers increased by approximately 2.5% during the period.
- Allen Smythe and Ross Smythe awarded Geoffrey E. Griffith Award at Tennis Queensland Awards Night in March.

#### Regional Summary

This year the South Region introduced a Junior Tennis Athlete Development Program. This program is part of our regional strategic plan to create clear competition and training pathways for young tennis athletes. By launching a local team of athletes in new training programs, South Region junior players now have a clear development pathway that sets out the steps from local to international level. Although this is a South Region initiative, one purpose of the plan is to get junior tennis athletes thinking beyond the region. An explicit goal is to produce, in time, one or more junior tennis athletes who reach national and international levels. In addition, the South Regional Assembly attracted Heritage Building Society as a major sponsor for this program.

Two Regional Junior Development Camps held in August 2009 and March 2010 resulted in good attendance from players. However, it was difficult to source appropriate coaches to attend these camps

On the other hand, South Region player registration numbers increased by approximately 2.5% on previous years and tennis in Schools Targets for 2009/10 will be met with assistance from three coaches, one in Warwick and two in Toowoomba.

The following South Region affiliates have recently completed comprehensive business plans and risk management assessments; Stanthorpe and District Tennis Association,

Dalby and District Tennis Association, Roma and District Tennis Association, and Chinchilla Tennis Association.

**Allen Smythe**, Chairperson

### WEST

#### Office Bearers

<i>Chairperson:</i>	Theresa Braithwaite
<i>Deputy Chairperson:</i>	Brett Walsh
<i>Secretary:</i>	Greg O'Connell
<i>Regional Member:</i>	Theresa Braithwaite
<i>Community Tennis Officer:</i>	Richard Toye

#### Highlights / Achievements

- Copper City the first facility completed under Regional Tennis Facilities Program with successful opening in 2010
- Morven Tennis Club received SRS funding to upgrade the club's court surfaces in 2009/10 financial year
- The number of registered players in the Region increased by approximately 5% on previous years.
- WRNZ and WRCZ Zonal Assemblies (North and Central) are now working very independently and their administration functions are becoming more self-sufficient.

#### Regional Summary

West Region North Zone has a new Zonal Assembly Committee in place and continues to actively work to improve development of West Region North Zone.

West Region's Central Zone Assembly has improved its development of tennis with the recent appointment of a new coach who commenced in term 2, 2010.

There is limited development in the West Region South Zone due to lack of effective Zonal Assembly structure in place, as only two of the original five bodies are now affiliated with Tennis Queensland.

It is noted that the number of registered players within the West Region increased by approximately 5% on previous years.

Tennis Queensland has increased and improved the direction of junior player development in regional areas in the last 12 months. This has resulted in regional players experiencing more success at state and national level events.

**Theresa Braithwaite**, Chairperson



## Tournaments Report

*The Queensland tournament program aims to accommodate players of all levels. Assistance is provided to affiliated bodies that are responsible for conducting these events.*

Queensland hosts a number of high profile National and International events throughout the year including the Festival of Tennis in Ipswich, the Optus 12s and 14s Winter Nationals in Brisbane, and a number of Pro Circuit events.

Tennis Queensland works closely with Tennis Australia and affiliated bodies ensuring that these events continue to keep the spotlight on tennis in Queensland, providing spectators with access to quality tennis played by some of the world's top ranked players. Queensland hosted 8 national championships and 2 Junior ITF events in 2009/10, this figure is unprecedented and is a direct result of the world class tennis facilities.

### Queensland Tournament Calendar and Sanctioning Process

Each year affiliated bodies are required to apply for the sanctioning of open and junior tournaments. This process ensures affiliated bodies adhere to a number of guidelines in each of the tournament categories ensuring players throughout Queensland have access to quality controlled events. This department strives to minimise tournament clashes within regions and aims to provide each tournament the foundations to succeed.

*2010 Plexicushion Queensland Open winners  
Michael Look and Sophie Letcher*



Approximately 200 sanctioned open, junior, junior masters, wheelchair and senior tournaments were conducted throughout Queensland in the 2009 calendar year. Tennis Queensland distributed over 5,000 pocket-sized tournament booklets to players throughout Queensland. Each booklet contained a detailed tournament calendar and other useful tournament-related information.

### State Office Managed Tournaments

*In addition to administering the state tournament circuit, the Tournament Department conducted the following tournaments throughout the year:*

#### Rod Laver Queensland Junior Tennis Championships

This event is one of the biggest and well-known tournaments on the Optus Junior Tournament calendar. The event attracts approximately 600 entrants each year and provides excellent challenges for Queensland, interstate and international players alike. The event holds valuable ranking points on four of the five age groups offered during the five day tournament.

#### Queensland Junior Teams Carnival

This event is one of the few team-oriented competitions on the Queensland calendar and offers players in all regions the opportunity to compete for the much sought after 'Regional Shield'. This tournament is hosted over four Brisbane venues and allows players aged 11-17 to participate. In 2009 this event was played at the Queensland Tennis Centre as well as a number of other venues around Brisbane. A continuous play individual event with Australian Ranking points was added to this event for the first time in 2009, providing all participants with a high number of matches. Gold Coast was the champion at the end of the five day event, defeating the Sunshine Coast by 0.01 points.

#### Australian Money Tournaments

In 2009 Tennis Queensland conducted six Australian Money Tournaments (AMT's) throughout the state at Gladstone, Kawana, Griffith University (Mt Gravatt), Shaw Park, Azzura and Bundaberg. Each event saw high quality fields and provided exceptionally high match play for participants and spectators. In addition to the valuable Australian Rankings available, substantial prize money was on offer with \$10,000 at each event bringing the total amount to \$60,000.



## Tournaments (CONT.)

### Tiered Tournaments

Following on from the 2009 trial of the ranking band tournaments, the Tournament Department introduced the 'Tiered Tournaments' to the Queensland tournament calendar.

The tiered tournaments have three main objectives:

- Provide all players with competitive matches for the entire tournament due to playing matches in smaller bands against players of a comparable standard
- Provide value for money through guaranteed four matches
- Make every match count by scaling prize money and AR point breakdown

### Brisbane Open Age

Tennis Queensland conducted the Brisbane Open Age for the first time in April 2010. Entry numbers of 343 exceeded expectations. A new continuous play draw format was used which provided all players with an increased number of matches of a high competitive standard.

### Referees

In 2009/10 Tennis Queensland continued to be heavily involved in the delivery of tennis official courses in Queensland. Together with Tennis Officials Australia (TOA) a training and course schedule was developed to provide qualified officials to Queensland tournaments. All sanctioned open and junior tournaments are required to have a Level 1 qualified referee present at their tournament and as such, the Tournament Department maintains the referee appointment schedule.

*Enjoying the twilight finals*



### Tournament Planner (TP)

Tournament Planner replaced TMS as the recommended Australian Tournament Software in 2009/10. TP was introduced to clubs by a number of information sessions held in each region. The uptake of TP has been high with approximately 45 clubs with active TP accounts. All Australian Ranking tournaments are required to use this program.

### On-Line Entry incorporating TP

Tennis Queensland supports tournaments wishing to utilise the on-line entry process by providing administrative assistance to affiliates who use this time saving function of TP. The Rod Laver Queensland Junior Championships and all Queensland AMT's utilise the on-line entry capabilities to ensure efficient management of these events.

### State Ranking Lists

Throughout 2009/10, the Tournament Department, supported considerably by Gail Bates, maintained monthly Junior Rankings Lists. Each month these lists were updated providing the latest rankings based on results from state and national point events. These lists provide a state perspective on ranking points in addition to the Tennis Australia managed Australian Ranking.

### Tournament Improvement Program

Sanction fees collected from Australian Ranking and State Junior Ranking events are put toward the Tournament Improvement Program fund, which supports a range of different initiatives throughout the year. Some of these funds were used to support new initiatives such as the Tier Tournaments and the Coach Travel Assistance Program.

### Tennis Australia and Member Associations Events Disciplinary Policy

Tennis Australia introduced a new Events Disciplinary Policy in 2009, which is now called the Tennis Australia Code of Behaviour. This code is enforced at all tournaments in Queensland. The new code of behaviour includes a reduction of Australian Ranking points if continual breaches of the code are found.



## Player and Coach Development Report

### HIGH PERFORMANCE

Queensland juniors continued with winning form on the international tournament circuit in 2009/10 capturing multiple titles. Through this period, a host of players have had international success including:

<i>Bernard Tomic</i>	Won through to the 2nd round of the Australian Open and also won the Burnie ATP Challenger. On the junior tour, Tomic won the US Open Junior Championships reaching a career high junior ranking of #2. Bernard Tomic made his Davis Cup debut for Australia in Melbourne.
<i>Ashleigh Barty</i>	Winner of an ITF Grade 4 Event and was a finalist in the Gallipoli Youth Tennis Cup ITF Grade 4 event.
<i>Ben Mitchell</i>	Finalist of the Wimbledon Junior Boys Championships and winner of an ITF Grade 1 event in Thailand.
<i>Sophie Letcher</i>	Finalist in the \$25,000 ITF Pro-Tour Event in Ipswich.
<i>Mark Richards</i>	Winner of the Gallipoli Youth Tennis Cup ITF Grade 4 event.
<i>Josh Barrenechea</i>	Winner of the ITF Grade 4 event in Ipswich.
<i>Jason Kubler</i>	Winner of 6 ITF Junior Titles, reached a ranking high of #1 in the world for 18/U players on the ITF Junior Tour, was the #1 player in the Australian Junior Davis Cup Team that won the world finals in Mexico, in April 2010, Kubler achieved his first ATP Ranking by making the final of the Ipswich Pro-Tour event

Ashleigh Barty, Lyann Hoang and Andrea Dikosavljevic represented Australia in the 14/U World Junior Tennis Qualifying Event – they qualified for the world finals in the Czech Republic.

*Lleyton Hewitt and Lachlan Ferguson*



### National Junior Success

In 2009/10 Queensland athletes continued to shine on the domestic front with success at the national level. Significant results by Queensland athletes include:

<i>Travis Boon</i>	Winner of the 14/U Winter National Championships
<i>Jason Kubler</i>	Winner of the 18/U Australian Championships
<i>Monika Wejnert</i>	Winner of the 18/U Australian Championships
<i>Akira Santillan</i>	Winner of the 12/U Autumn Clay Court National Championships
<i>Naiktha Bains</i>	Winner of the 12/U Autumn Clay Court National Championships
<i>Ashleigh Barty</i>	Winner of the 14/U Autumn Clay Court National Championships
<i>Ashleigh Barty</i>	Winner of the 16/U Autumn Clay Court National Championships
<i>Queensland Bruce Cup Team</i>	Won the National Primary School Competition for the third year in a row

### State Teams Results

Queensland Girls dominated the Australian Team Championships taking out both titles for the 12/U and 14/U age groups. Final places are as follows:

<i>12/U Girls Team</i>	1st place overall
<i>12/U Boys Team</i>	6th place overall
<i>14/U Girls Team</i>	1st place overall
<i>14/U Boys Team</i>	4th place overall

### Australian Institute of Sport (AIS) Pro Tour Program

In 2010, Queensland has seven athletes in the AIS Pro-Tour Program out of a total of 16 scholarships available. The Queensland athletes are:

<i>Male</i>	Jason Kubler, Ben Mitchell, Maverick Banes, Andrew McLeod, Mark Richards
<i>Female</i>	Isabella Holland, Monika Wejnert



## Player and Coach Development Report (CONT.)

### National Academy (NA)

Brisbane is one of five National Academies in Australia, which are designed to operate as a collective training environment for leading elite junior players. The NA Brisbane boasts a team of highly experienced coaches and staff dedicated towards developing the next generation of professional tennis players. The NA Brisbane is supported by Tennis Queensland, Tennis Australia and the Queensland Academy of Sport (QAS).

Players eligible for the National Academy have met rigorous criteria for their respective birth year and truly sit amongst the elite of their peers. The National Academy offers Full and Partial National Scholarships and also an Associate level, which is offered to Queensland athletes. The program primarily caters for players aged between 12 and 18 years old with qualifying athletes receiving a 12 month scholarship.

The players have access to on and off court training covering all areas of skill development including technical, tactical, physical and psychological training. With small numbers, that National Academy offers players a low coach to player ratio for highly focussed development opportunities.

In the 2009/10 period, former touring professional Scott Draper joined the NA Brisbane Team as a National Coach, along with High Performance Coach Anthony Richardson coming on board as an NA Coach. Former NA Coach Ben Mathias transitioned in to the AIS Pro-Tour Program.

In October 2009, Tennis Queensland implemented a regional assistance program for regionally based athletes who meet the NA criteria. The program offers qualifying athletes financial assistance and access to NA services and staff when they travel to Brisbane for tournaments or camps. The program has been very successful to date, with many of the regional athletes integrating more in to the National Academy structure throughout the year.

### Queensland Academy of Sport (QAS) Tennis Program

The primary function of QAS is to provide services, facilities and funding to support high performance programs. QAS has continued to support tennis through a partnership program with the relationship continuing to grow from strength to strength.

QAS has opened up further opportunities for facility usage and also professional development for Tennis Queensland and Tennis Australia staff. The QAS support is a critical part of the high performance area in Queensland tennis.

### TALENT DEVELOPMENT

#### Talent Search and Development

In the 2009/10 period, the Talent Search and Development program evolved from its original focus of talent identification. The primary focus of the program now hinges on education and development opportunities for athletes, parents and coaches. In the past 12 months, three major training camps were held for approximately 40 young children who were the leading athletes in the 12/U age group from all over Queensland.

During this period, 37 private coaches were involved in these camps to assist with the delivery as well as for professional development. Gary Stickler was named a Talent Development Mentor for Queensland alongside Rob Leeds (TA Coach Development Coordinator) and Matt Richards (Regional Development Coach); they were involved in delivering the workshops that focused on developing our current and next generation of coaches in Queensland.

In the same period, Tennis Queensland in conjunction with Tennis Australia offered 10 coaches travel assistance to attend the National Championships. This initiative also gave the coaches a chance to attend some professional development activities.

In later 2009, Tennis Australia implemented the "Talent Development Coach" program which recognises coaches who have had significant results in developing young elite athletes. In 2009/10, Queensland had 17 coaches qualify for the program. The coaches include John Birrell, Graeme Brimblecombe, Derek Burden, Zoran Dikosavljevic, Chris Dwyer, Sean Fyfe, Glenn Hamilton, Wayne Hannah, Allan Harris, Matthew Limpus, Roger Marquass, Glenn Moodie, Scott Rawlins, Anthony Richardson, Chris Steel, Gary Stickler and Gavin Wright.

#### Regional Development

The primary focus of the Regional Player Development program centres on training camps and professional development. The Regional Camps program gives leading junior players a chance to come together and train in the lead up to a major regional event. The camps are led by the Regional Development Coach (RDC) and the Coach Education Coordinator and cover both on and off court training and education for athletes, coaches and parents. In 2009/10 there were nine camps held around regional Queensland.

One of the significant presentations delivered at the regional camps focuses on pathways available in tennis. This presentation is designed to outline the opportunities





available for a lifetime involvement in the sport, keeping our older junior athletes heavily involved in the game they love. It also sparks interest in unearthing our next generation of coaches, officials, administrators and club volunteers.

## COACH DEVELOPMENT

The Coach Development arm of the Player Development Department is an essential component of the future success of Queensland tennis. Tennis Australia appoints a Coach Development Coordinator (CDC) who works out of the Tennis Queensland office and delivers coach development programs throughout the state. With over 400 coaches in the state, Tennis Queensland and Tennis Australia ensure the highest level of education and professional development is offered to the coaching community.

The Coach Development unit is charged with growing and providing educational opportunities to coaches including:

- Deliver world class accredited coaching courses
- Design and provide professional development opportunities for all levels and standards of coaches relating to their area of interest and accreditation level
- Provision of Tennis Australia Coach Membership services
- Tennis Australia Coach Education Courses – Tennis Australia coaching courses are conducted across Australia with the assistance of Member Associations.

### *In Australia, there are four training/coaching course options:*

#### **Introduction to MLC Hot Shots**

This course includes general and sport specific coaching principles and it is designed to develop the skills of junior players aged 4–12 years old, with a focus on enjoyment and learner success. It explores activities that introduce players to modified equipment, maximum participation and keeping kids active whilst enjoying and learning tennis. It is an on-court coaching course, where participants get active and learn the activities whilst doing them. This course has been designed for novice coaches with limited experience.

#### **Junior Development Coaching Course**

Designed to provide training and education, this course allows a coach to introduce the basic skills of tennis to beginners. It focuses on fun and participation and these coaches are considered to be specialists at harnessing the talent of junior players. In the 2009/10 period, Queensland conducted two Junior Development Coaching Courses in Brisbane.

#### **Club Professional Coaching Course**

This course includes training and content built around the skills and knowledge that a Head Coaching Professional will need. These coaches are trained in improving player performance. This course also includes content to enhance a coach's communication, business and management skills. There is one Club Pro course held each year. An extension of this course is offered as a Master Club Professional, which allows participants to exit with a Tertiary qualification in business.

#### **Professional Development Opportunities**

Tennis Queensland and Tennis Australia provided 15 Professional Development Workshop opportunities within Queensland in this period. Locations included Brisbane, Toowoomba, Warwick, Cairns, Rockhampton, Townsville, Sunshine Coast and Mackay. Topics included the Athlete Development Matrix, Skill Acquisition, Communication, Perceptual Motor Development, High Performance Coaches Forum, MLC Tennis Hot Shots, Racquet Restringing & Equipment Preparation, Developing On Court Activities and Business Development.

#### **Tennis Australia Coach Membership (TACM)**

Tennis Australia has been offering coach membership since November, 2006. In the 2009/10 period, Queensland had 395 Tennis Australia Coach Members. TA Coach Membership provides its members with access to world class information and services. TACM enjoy the benefits of accessing secured coaching information on the Tennis Website as well as access to the ITF 'i-coach' web service, which is a platform that provides an enormous amount of coach education related materials.

Tennis Australia has established the National Coaching Advisory Group (NCAG) and a Local Coach Advisory Group (LAG) to ensure that the voice of the coach is heard at all levels, i.e. *"Heard Locally, Represented Nationally"*. Tennis Australia is committed to raise the profile and professionalism of the tennis coaching industry. In 2009/10, Tennis Australia carried out 2 Local Advisory Group (LAG) forums, which affords the local coaches a platform for discussion on local coaching matters.



## Tournament Results

### QLD ATP MEN'S FUTURES

EVENT	WINNER	RUNNER UP	SCORE
<b>IPSWICH</b>			
Singles	Bryden Klein	Jason Kubler	6-3, 6-4
Doubles	B Klein/ D Propoggia	M Daniell/ L Mackenzie	6-2, 6-3
<b>BUNDABERG</b>			
Singles	Bryden Klein	Dane Propoggia	7-5, 6-3
Doubles	B Klein/ D Propoggia	M Look/ L Mackenzie	6-1, 6-0

### QLD ITF WOMEN'S CHALLENGER EVENTS

EVENT	WINNER	RUNNER UP	SCORE
<b>IPSWICH</b>			
Singles	Sally Peers	Sophie Letcher	6-4, 6-3
Doubles	M Kawatoko/ M Miyamura	I Holland/ S Peers	6-4, 4-6, [10-5]
<b>BUNDABERG</b>			
Singles	Natsumi Hamamura	Sally Peers	6-0, 6-4
Doubles	M Mirkovic/ J Moore	V Rajicic/ E Starr	6-3, 1-6, [10-7]

### AUSTRALIAN MONEY TOURNAMENTS

EVENT	WINNER	RUNNER UP	SCORE	
<b>2009 QLD AMT # 5 KAWANA – Kawana</b>				
Singles	<i>Men's</i>	Mark Draper	Sean Fyfe	6-4, 6-3
	<i>Women's</i>	Bojana Bobusic	Sophie Letcher	3-6, 6-4, 6-4
Doubles	<i>Men's</i>	C Letcher/ B Moore	J Chaplin/ A Sanders	6-2, 6-7 [10-2]
	<i>Women's</i>	T Douglas/ S Letcher	G Carswell/ C Goetti	6-1, 6-2
<b>2009 QLD AMT # 6 SHAW PARK – Shaw Park</b>				
Singles	<i>Men's</i>	Robert Smeets	Matthew Barton	6-2, 6-4
	<i>Women's</i>	Ashling Sumner	Monika Wejnert	6-4, 6-4
Doubles	<i>Men's</i>	M Draper/ S Merrin	C Letcher/ B Moore	6-3, 6-4
	<i>Women's</i>	S Ricketts/ A Sumner	E James/ A Nathalia	6-2, 6-1
<b>2009 QLD AMT # 7 AZZURA – Azzura</b>				
Singles	<i>Men's</i>	Mark Draper	Matheson Klein	6-1, 7-6(8)
	<i>Women's</i>	Sophie Letcher	Ashling Sumner	6-4, 6-3
Doubles	<i>Men's</i>	J Barrencea/ M Draper	L Harvey/ A Pattison	4-6, 6-4 [10-7]
	<i>Women's</i>	S Letcher/ A Sumner	A Hibberd/ K O'Shea	6-3, 7-5
<b>2009 QLD AMT # 8 GRIFFITH UNIVERSITY – Griffith Uni</b>				
Singles	<i>Men's</i>	Robert Smeets	Kaden Hensel	1-6, 7-6, 6-4
	<i>Women's</i>	Monika Wejnert	Athena Nathalia	6-3, 6-4
Doubles	<i>Men's</i>	L Frost/ M Klein	J Chaplin/ A Sanders	6-4, 6-2
	<i>Women's</i>	T Douglas/ M Wejnert	G Carswell/ A Nancarrow	6-4, 7-6



## AUSTRALIAN MONEY TOURNAMENTS (continued)

EVENT	WINNER	RUNNER UP	SCORE	
<b>2010 Plexicushion Queensland Open</b>				
Singles	<i>Men's</i>	Michael Look	Mark Draper	7-5, 3-6, 6-4
	<i>Women's</i>	Sophie Letcher	Shannon Golds	6-2, 6-2
Doubles	<i>Men's</i>	J Chaplin/ M Look	J Easton/ A Sanders	3-6, 6-3, (10-4)
	<i>Women's</i>	S Golds/ A Sumner	S Letcher/ E Panoho	6-4, 6-3

## MAJOR QUEENSLAND TITLES

EVENT	WINNER	RUNNER UP	SCORE	
<b>2009 UNIVERSITY OPEN - UQ</b>				
Singles	<i>Men's</i>	Mark Draper	Luke Harvey	6-3, 6-2
	<i>Women's</i>	Ashling Sumner	Nana Miyakawa	6-0, 6-0
Doubles	<i>Men's</i>	N Northcott/ E Wilkinson	L Harvey/ A Woolcock	6-4, 6-1
	<i>Women's</i>	N Miyakawa/ A Nathalia	S Brelsford/ E Cartwright	6-3, 6-3
Mixed Doubles	H Receveur/ G Van Peperzeel	K Symon/ S Puodziunas	7-5, 6-4	
<b>2010 GRIFFITH UNIVERSITY GOLD AMT - Griffith Uni</b>				
Singles	<i>Men's</i>	Mark Draper	Leon Frost	6-4, 4-6, 6-1
	<i>Women's</i>	Shayna McDowell	Ashling Sumner	7-5, 6-3
Doubles	<i>Men's</i>	S De Waard/ L Harvey	T Dragojlo/ S Gort	6-1, 4-6, (10-5)
	<i>Women's</i>	R Binnie/ H Sheahan	C Gramlick/ S Hopper	6-2, 6-4
Mixed Doubles	S Letcher/ K Thompson	E Billett/ P Ganet	7-6, 6-7, (10-8)	
<b>2010 QLD SYNTHETIC GRASS CHAMPS/TOOWOOMBA OPEN - Toowoomba</b>				
Singles	<i>Men's</i>	Leon Frost	Scott Puodziunas	6-2, 2-6, 6-3
	<i>Women's</i>	Sophie Letcher	Shayna McDowell	6-2, 1-1 (Ret)
Doubles	<i>Men's</i>	S De Waard/ S Puodziunas	R Dorman/ N Willis	6-4, 6-2
	<i>Women's</i>	T Douglas/ H Receveur	C Gramlick/ E Hunter	6-1, 6-2
Mixed Doubles	S Letcher / K Thompson	C Gramlick / R Dorman	R-R	
<b>2010 IPSWICH OPEN - Ipswich</b>				
Singles	<i>Men's</i>	Michael Look	Luke Harvey	5-7, 6-1, 6-1
	<i>Women's</i>	Sophie Letcher	Hannah Receveur	6-4, 6-2
Doubles	<i>Men's</i>	S De Waard/ S Puodziunas	G Ormiston/ M Thams	6-3, 6-2
	<i>Women's</i>	T Aranas/ R Tredoux	E Panoho/ H Receveur	7-6, 6-2
<b>2010 QLD HARDCOURT/GLADSTONE OPEN - Gladstone</b>				
Singles	Not completed due to rain			
Doubles	Not completed due to rain			



## Tournament Results (CONT.)

### MAJOR QUEENSLAND JUNIOR RESULTS

#### AUSTRALIAN TEAMS CARNIVALS – Melbourne

AGE GROUP	EVENT	EVENT
<b>12s</b>	<b>Rod Laver Cup</b>	<b>Margaret Court Cup</b>
	Akira Santillan	Lizette Cabrera
	Oliver Anderson	Kimberly Birrell
	Cole Ingram	Olivia Tjandramulia
<i>12s Manager</i>	<i>Scott Draper</i>	<i>Matt Richards</i>
<i>Overall Place</i>	<i>6th</i>	<i>1st</i>
<b>14s</b>	<b>Sproule Stephens Cup</b>	<b>Mary Hawton Cup</b>
	Madison Simmons	Ashleigh Barty
	Dylan Long	Ebony Panoho
	Travis Boon	Jaimee Gilbertson
<i>14s Manager</i>	<i>Anthony Ross</i>	<i>David Hodge</i>
<i>Overall Place</i>	<i>4th</i>	<i>1st</i>
<b>16s</b>	<b>Wayne Reid Cup</b>	<b>Wayne Reid Cup</b>
	NA	NA
<b>18s</b>	<b>Linton Cup</b>	<b>Wilson Cup</b>
	NA	NA

#### 2009 QUEENSLAND STATE AGE CHAMPIONSHIPS – Rockhampton

EVENT		WINNER	RUNNER UP	SCORE
18/U	<i>Men</i>	David Single	Jake Alchin	6-0, 6-1
	<i>Women</i>	Nikita Williams	Kelly Priddey	Round Robin
16/U	<i>Men</i>	Cory Jacobs	Harry Bell	6-1, 7-5
	<i>Women</i>	Katarina Dikosavljevic	Jaimee Gilbertson	6-1, 6-1
14/U	<i>Men</i>	Madison Simmons	Dylan Long	2-6, 6-1, 6-1
	<i>Women</i>	Jacqui Bell	Lilly Fuller	6-1, 5-7, 6-3
12/U	<i>Men</i>	Samuel Yang-Zhao	Oliver Anderson	6-4, 1-6, 7-5
	<i>Women</i>	Olivia Tjandramulia	Lizette Cabrera	6-4, 7-5
10/U	<i>Men</i>	Max Jacobsen	Christopher Lane	6-1, 6-1
	<i>Women</i>	Tenika McGiffin	Lucinda Brown	7-6, 4-6, 10-5

2010 Plexicushion Queensland Open Championships Presentation





#### JUNIORS MASTERS CIRCUIT - State Final – The Ken Hick/Murray Whitbread Trophy: Gold Coast

EVENT		INDIVIDUAL WINNERS	REGION
17/U	<i>Men</i>	Sam Medlin	C
	<i>Women</i>	Jessica Beitey	GC
15/U	<i>Men</i>	Cameron Becker-Jones	GC
	<i>Women</i>	Nicky Beitey	GC
13/U	<i>Men</i>	Seth Siriya	NQ
	<i>Women</i>	Olivia Tjandramulia	CQ
11/U	<i>Men</i>	Jack Walton	NQ
	<i>Women</i>	Sarah Brown	GC

#### QLD JUNIOR TEAMS EVENT – Regional Shield: Gold Coast

EVENT		WINNING TEAM
17/U	A	Gold Coast A
	B	Gold Coast B
15/U	A	Sunshine Coast A
	B	Central A
13/U	A	Met North A
	B	Gold Coast B
11/U	A	Gold Coast A
	B	North A

#### QLD STATE PRIMARY SCHOOL TENNIS CHAMPS (Overall Winner: Metropolitan West)

TEAM	METRO WEST	METROPOLITAN
Individual	Oliver Anderson	Nakitha Bains

#### NATIONAL PRIMARY SCHOOLS TENNIS CHAMPS – Bruce Cup Winner: Queensland

	BOYS TEAM	GIRLS TEAM
<i>Qld Overall Place: 1</i>	Oliver Anderson	Nakitha Bains
	Cole Ingram	Lizette Cabrera
	Mitchell Harper	Sammy Gibbs
	Jayden Nguyen	Priscilla Hon
	Jack Jaede	Isabella Spring
	Lachlan Ferguson	Lois Ovet
<i>Manager</i>	<i>Chris Rolph</i>	<i>Vanette Tobin</i>



## Tournament Results (CONT.)

### MAJOR QUEENSLAND JUNIOR RESULTS (CONT.)

QLD SECONDARY SCHOOL STATE CHAMPS – Overall Winner			
BOYS TEAM	INDIVIDUAL	GIRLS TEAM	INDIVIDUAL
South Coast	Dean Ormsby	South Coast	Elizabeth James
Metropolitan West	Cory Jacobs	Metropolitan North	Eden Cartwright

AUST SECONDARY SCHOOLS NATIONAL CHAMPS – Pizzey Cup Winner: New South Wales		
	BOYS TEAM	GIRLS TEAM
<i>Old Overall Place: 3</i>	Dean Ormsby	Elizabeth James
	Cory Jacobs	Eden Cartwright
	Madison Simmons	Shawnee-Ann Brelsford
	Harry Bell	Katrina Kelly
	Luke Gerry	Shannon Beckett
	Luke Morland	Emily Burns
	Tyler Inglis	Mackenzie Gresham
	Robert Stirling	Jacqui Bell
<i>Captain</i>	<i>Cory Jacobs</i>	<i>Katrina Kelly</i>
<i>Manager</i>	<i>Jeff Macgregor</i>	<i>Paula Cudmore</i>

09 ROD LAVER QLD JUNIOR TENNIS CHAMPS				
EVENT		WINNER	RUNNER UP	SCORE
10s	<i>Boys</i>	Sean Robinson	Adam Walton	6-3, 6-2
	<i>Girls</i>	Somer Dalla Bona	Hannah Scott	6-2, 6-3
12s	<i>Boys</i>	Alexander Klintcharov	Samuel Yang-Zhao	6-3, 6-1
	<i>Girls</i>	Paige Hourigan	Isabelle Wallace	7-6, 6-3
14s	<i>Boys</i>	Haris Poric	Matthew Tanza	6-3, 6-2
	<i>Girls</i>	Kristy Jones	Brittany Huxley	6-3, 6-4
16s	<i>Boys</i>	Cory Jacobs	James Fermanis	5-7, 6-2, 7-6
	<i>Girls</i>	Rachel Tredoux	Shawnee-Ann Brelsford	6-0, 6-0
18s	<i>Boys</i>	Dean Ormsby	Keiran Thompson	6-2, 2-6, 6-4
	<i>Girls</i>	Georgina Carswell	Katarina Dikosavljevic	6-3, 6-3



## State Rankings (As at December 2009)

OPEN			
MEN		WOMEN	
1	TOMIC Bernard	STOSUR	Samantha
2	MILLMAN John	GOLDS	Shannon
3	SMEETS Robert	HOLLAND	Isabella
4	HENSEL Kaden	WEJNERT	Monika
5	HANLEY Paul	SUMNER	Ashling
6	KLEIN Matheson	WELFORD	Tiffany
7	LINDNER Joel	LETCHER	Sophie
8	LETCHER Christopher	BINNIE	Renee
9	MITCHELL Benjamin	SHEAHAN	Harriet
10	EASTON Jared	VORSTER	Dane

18/U			
MEN		WOMEN	
1	TOMIC Bernard	HOLLAND	Isabella
2	MITCHELL Benjamin	WEJNERT	Monika
3	KUBLER Jason	SUMNER	Ashling
4	BANES Maverick	LETCHER	Sophie
5	SRBINOVSKI Nenad	SHEAHAN	Harriet
6	SANDERS Alex	VORSTER	Dane
7	VAN PEPPERZEEL Gavin	DOUGLAS	Taylor
8	BARRENECHEA Joshua	GRAMLICK	Cassie
9	McLEOD Andrew	GOETTI	Celina
10	MUMCU Adem	BARTY	Ashleigh

16/U			
MEN		WOMEN	
1	KUBLER Jason	VORSTER	Dane
2	McLEOD Andrew	BARTY	Ashleigh
3	RICHARDS Mark	DIKOSAVLJEVIC	Katarina
4	BRAUND Joel	NATHALIA	Athena
5	ORMSBY Dean	JAMES	Elizabeth
6	PUTTERGILL Calum	RECEVEUR	Hannah
7	JACOBS Cory	ROACH	Ebony
8	BOON Travis	GILBERTSON	Jaimee
9	MILLER Leroy	PANOHO	Ebony
10	TAKEDA Naoki	TREDOUX	Rachael



John Millman



Samantha Stosur



Bernard Tomic



Isabella Holland



## State Rankings (CONT.)

14/U				
MEN		WOMEN		
1	BOON	Travis	BARTY	Ashleigh
2	WALL	George	GILBERTSON	Jaimee
3	SIMMONS	Madison	PANOHO	Ebony
4	LONG	Dylan	HOANG	Lyann
5	BEJAR	Jonathon	ARANAS	Teigan
6	KAESS	Norbert	DIKOSAVLJEVIC	Andrea
7	ANDERSON	Oliver	KRUTAK	Monique
8	STIRLING	Robert	GRESHAM	Mackenzie
9	YANG-ZHAO	Samuel	CABRERA	Lizette
10	SIMMONS	Ryan	MORRISS	Kalina

12/U				
MEN		WOMEN		
1	ANDERSON	Oliver	CABRERA	Lizette
2	INGRAM	Cole	BIRRELL	Kimberley
3	HARPER	Mitchell	TJANDRAMULIA	Olivia
4	SANTILLAN	Akira	BAINS	Naiktha
5	JAEDE	Jack	HON	Priscilla
6	FERGUSON	Lachlan	TOMIC	Sara
7	LANG	Kiwa	OVETT	Lois
8	WALTON	Jack	GIBBS	Sammy
9	NGUYEN	Jayden	SPRING	Isabella
10	REWETI	Evan	ROGERS	Natalie



Ashleigh Barty



Travis Boon



Lizette Cabrera



Oliver Anderson





## Tennis Queensland Partners

### MAJOR PARTNERS

---

#### Tennis Australia

Player Development (National Academy – Brisbane), Community Tennis Programs

#### Sport & Recreation Queensland

Regional Tennis Facilities Program

#### Stadiums Queensland

Queensland Tennis Centre

#### Queensland Academy of Sport

Player Development (National Academy – Brisbane)

#### Xstrata

Regional Development Centres Program

#### Mirvac

Queensland Tennis Centre

#### State Development Program

Disabilities Special Initiatives Program  
True Sports Live Here Program





## Tennis Queensland Partners (CONT.)

### CORPORATE PARTNERS

#### Wilson

Official Ball of Tennis Queensland and Preferred Supplier (Jul – Dec)



#### HEAD

Official Ball of Tennis Queensland (May – Jun) and Official Sponsor Junior Masters Circuit

#### Bendigo Bank

Official Sponsor  
2010 Junior Master Circuit



#### Coca Cola Amatil

Queensland Tennis Centre Supplier / Official Sponsor  
Tennis Queensland

#### Heritage Building Society

Naming Rights Sponsor  
Community Tennis Grants Program



#### LSI Hamilton Lighting Systems

Official Sponsor  
Tennis Queensland & Queensland Tennis Centre

#### Plexicushion

Naming Rights Sponsor  
2010 Queensland Open



#### Stanwell

Naming Rights Sponsor  
Far North Queensland Regional Development Program





## SPONSORS AND SUPPLIERS

### Rebel Sport

Official Sponsor



### Rocklea International

Official Sponsor  
Queensland Tennis Centre Tournament Program



### Sportswear Qld

Official Sponsor  
Queensland Open Wheelchair Championships



### Wotif.com

Preferred Online Booking Agent

### Yellowtail Wines

Official Queensland Tennis Centre Supplier

[ yellow tail ]®



LION  
NATHAN

### Lion Nathan

Official Queensland Tennis Centre Supplier

## ANNUAL AWARDS SPONSORS

### Achievement Trophies

Lexus of Brisbane

Noosa Springs Resort

Peachy Massage

Black & White Cabs

Valley Edge Print & Design Centre



VALLEYEDGE  
PRINT | SIGNS | DESIGN  
www.valleyedge.com.au

## Director's Report

*The Directors submit their report on Royal Queensland Lawn Tennis Association Ltd ("the Association") for the year ended 30 June 2010.*

### Directors

The Directors of the Association in office during the year and up to the date of this report were:

Mr K Laffey (President)
Ms L Taylor (Treasurer) (appointed 8 May 2010)
Mr M Ford
Mr J Kennedy (appointed 9 April 2010)
Mr D Kingston (appointed 7 November 2009)
Mr R Rolfe
Mr M Whitbread (appointed 7 November 2009)
Mr I Rodin (Treasurer) (resigned 26 November 2009)
Ms A Lyons (resigned 7 November 2009)
Mr S O'Kane (retired 7 November 2009)
Mr R Newton (retired 7 November 2009)

### Principal Activities

The principal activity of the Association during the financial year was to manage the sport of Tennis in Queensland, through the core business areas of: community tennis, tournaments, player development, technical services, marketing and public relations, finance and administration and the Queensland Tennis Centre. There were no significant changes to the principal activities of the Association during the year.

### Operating Results

During the year the Association made significant contributions to new facilities, including both the Queensland Tennis Centre and some of the planned Regional Facilities. An amount of \$855,325 has been expensed in the year ended 30 June 2010.

After taking into account these expense items, the Association recorded a deficit for the year of \$678,883 (2009: \$1,732,139).

### Dividends Paid or Recommended

No dividends were paid or declared since the start of the financial year. No recommendation for payment of dividends has been made.

### Review of Operations

The Association continued to manage the Regional Tennis Facilities Program, with the opening of the Mt Isa facility, with the remaining facilities nearing completion. Cairns and Rockhampton will be opened in the coming months, with Townsville and Toowoomba scheduled for 2011. The Queensland Tennis Centre again played host to the Brisbane International and a Davis Cup tie, between Australia and Japan, in May. There was an increased focus on grassroots development with increased funding from Tennis Australia, which enabled the appointment of a Community Tennis Officer – North Region and Member Services Officer to implement the new "My Tennis" software. There is continued focus on ensuring the Queensland Tennis Centre is fully leveraged with respect to all core business areas.

The Association Members met twice during the period to discharge the duties of the Association as provided for in the Constitution. The Members elected Directors of the Board.

## Director's Report (CONT.)

### Significant Changes in State of Affairs

There were no significant changes in the state of affairs of the Association during the year.

### After Balance Date Events

No matter or circumstance has arisen since the end of the financial year that has significantly affected or may significantly affect:

- a) the operations of the Association; or
- b) the results of those operations; or
- c) the state of affairs of the Association

in future financial years.

### Future Developments

The Regional Tennis Facilities Program was not completed by June 2010, as planned. During 2010-11 the Association will fully expend the balance of its committed contribution of \$2M.

### Environmental Issues

The Association's operations are not regulated by any significant environmental regulation under a law of the Commonwealth or of a state or territory.

### Options

No options over issued shares or interests in the entity were granted during or since the end of the financial year and there were no options outstanding at the date of this report.

### Meetings of Directors

During the financial year, 8 meetings of directors (including committees of directors) were held. Attendances by each director were as follows:

	(A)	(B)	(C)	(D)
Ken Laffey	8	8	3	3
Mike Ford	8	4	-	-
Jim Kennedy	2	2	1	1
Doug Kingston	4	4	-	-
Ken Laffey	5	5	1	1
Anne Lyons	4	4	2	2
Robert Newton	4	4	2	2
Shane O'Kane	8	4	2	2
Ian Rodin	4	4	2	2
Ross Rolfe	8	2	-	-
Leonie Taylor	1	-	-	-
Murray Whitbread	4	4	-	-

(A) Board meetings held while in office.

(B) Board meetings attended.

(C) Finance & Administration/Audit meetings held while in office.

(D) Finance & Administration/Audit meetings attended.

## Director's Report (CONT.)

### Information on Directors

Details of Directors at the date of this report.

<b>Name of Director</b>	<b>Qualifications, experience and special responsibilities</b>
<i>Ken Laffey</i>	<ul style="list-style-type: none"> <li>• Director since November 2008, and President since May 2009</li> <li>• Member from 1998 until 2009</li> <li>• Past President, Tennis Brisbane</li> <li>• Tennis Centre Owner</li> </ul>
<i>Leonie Taylor</i>	<ul style="list-style-type: none"> <li>• Director and Treasurer since May 2010</li> <li>• Director, Bentleys (Qld) Pty Ltd</li> <li>• Director and Chairman, North Qld Bulk Ports Limited</li> <li>• Director, Qld Police Citizens Youth Welfare Association Limited</li> </ul>
<i>Mike Ford</i>	<ul style="list-style-type: none"> <li>• Director from May 2000 until November 2005, and Director since November 2006</li> <li>• Member since 1999</li> <li>• Tennis Australia Councillor in 2005</li> <li>• Director, Australian Sports Clinics</li> <li>• Tennis Australia Seniors representative teams 2004-10</li> </ul>
<i>Jim Kennedy</i>	<ul style="list-style-type: none"> <li>• Director since April 2010</li> <li>• Order of Australia (AO), CBE, D Univ (QUT), FCA, FCPA</li> <li>• Queensland Business Leaders Hall of Fame</li> <li>• Life member – Institute of Chartered Accountants in Australia</li> <li>• Premier's "Queensland Greats" Award in 2006</li> <li>• Centenary Medal recipient in 2003</li> <li>• Advance Australia Award in 1989</li> <li>• Former Deputy Chairman – GWA International (Chair of the GWA Audit &amp; Risk Committee)</li> <li>• Former Director of the following: Suncorp Metway; Australian Stock Exchange; Qantas Airways (Chair of the Audit and Risk Committee); Macquarie Goodman Management Ltd &amp; Macquarie Goodman Funds Management Ltd.</li> </ul>
<i>Doug Kingston</i>	<ul style="list-style-type: none"> <li>• Director since November 2009</li> <li>• Tennis Administrator and promoter since 1978</li> <li>• Project Implementation manager, North Queensland Bio-Energy Corporation</li> <li>• Former journalist, sports editor and marketing manager, Townsville Bulletin newspaper</li> </ul>
<i>Ross Rolfe</i>	<ul style="list-style-type: none"> <li>• Director since July 2007</li> <li>• Director, Infrastructure Australia</li> <li>• Director, Infrastructure Partnerships Australia</li> <li>• Director WDS</li> <li>• Director, University of Queensland Senate</li> </ul>
<i>Murray Whitbread</i>	<ul style="list-style-type: none"> <li>• Director since November 2009</li> <li>• Chairperson – Central Regional Assembly since 2005</li> <li>• Member since 1997</li> </ul>

## Director's Report (CONT.)

### Directors' Benefits

The Directors of the Association do not receive any remuneration for the performance of duties related to their position.

### Insurance of Officers

During the year, the Association paid a premium to insure certain officers of the Association. The insured liabilities excluded conduct involving a wilful breach of duty or improper use of information or position to gain a personal advantage. The contract prohibits the disclosure of the premium paid.

The Officers of the Association covered by the insurance policy include Directors and other officers.

### Indemnifying Officers or Auditor

No indemnities have been given or insurance premiums paid, during or since the end of the financial year, for any person who is or has been an officer or auditor of the Association.

### Proceedings on Behalf of the Association

No person has applied for leave of Court to bring proceedings on behalf of the Association or intervene in any proceedings to which the Association is a party for the purpose of taking responsibility on behalf of the Association for all or any part of those proceedings.

The Association was not a party to any such proceedings during the year.

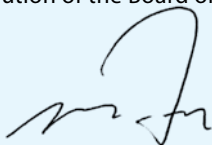
### Auditor's Independence Declaration

The lead auditor's independence declaration for the year ended 30 June 2010 has been received and can be found on page 46 of the directors' report.

Signed in accordance with the resolution of the Board of Directors.



**KEN LAFFEY**  
PRESIDENT



**MIKE FORD**  
DIRECTOR

Brisbane, 14 September 2010.



**AUDITOR'S INDEPENDENCE DECLARATION UNDER S 307C  
OF THE CORPORATIONS ACT 2001 TO THE DIRECTORS OF  
ROYAL QUEENSLAND LAWN TENNIS ASSOCIATION LIMITED**

As lead audit partner for the audit of the financial report of Royal Queensland Lawn Tennis Association Limited for the year ended 30 June 2010, I declare that to the best of my knowledge and belief, there have been:

- a) No contraventions of the auditor independence requirements of the *Corporations Act 2001* in relation to the audit; and
- b) No contraventions of any applicable code of professional conduct in relation to the audit.

Yours faithfully

**Lawler Hacketts Audit**

**Shaun Lindemann  
Partner**

Brisbane, 14 September 2010



## Director's Report (CONT.)

### Declaration by Directors

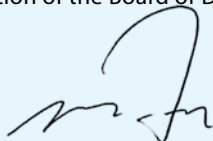
The directors of Royal Queensland Lawn Tennis Association Ltd ("the Association") declare that:

1. The financial statements and notes, as set out in pages 50 to 66 are in accordance with the *Corporations Act 2001*, and:
  - (a) comply with Australian Accounting Standards; and
  - (b) give a true and fair view of the financial position as at 30 June 2010 and of the performance for the year ended on that date of the Association.
2. The Chief Executive Officer and the Office Manager have each declared that:
  - (a) the financial records of the Association for the financial year have been properly maintained in accordance with section 286 of the *Corporations Act 2001*;
  - (b) the financial statements and notes for each financial year comply with the Accounting Standards; and
  - (c) the financial statements for the financial year give a true and fair view.
3. In the directors' opinion, there are reasonable grounds to believe that the Association will be able to pay its debts as and when they become due and payable.

Signed in accordance with a resolution of the Board of Directors.



**KEN LAFFEY**  
PRESIDENT



**MIKE FORD**  
DIRECTOR

Brisbane, 14 September 2010.



## INDEPENDENT AUDITOR'S REPORT TO THE MEMBERS OF ROYAL QUEENSLAND LAWN TENNIS ASSOCIATION LTD

We have audited the accompanying financial report of Royal Queensland Lawn Tennis Association Ltd ("the company"), which comprises the statement of financial position as at 30 June 2010, and the statement of comprehensive income, statement of changes in equity and statement of cash flows for the year ended on that date, a summary of significant accounting policies and other explanatory notes and the directors' declaration.

### Directors' Responsibility for the Financial Report

The directors of the company are responsible for the preparation and fair presentation of the financial statements in accordance with Australian Accounting Standards (including the Australian Accounting Interpretations) and the *Corporations Act 2001*. This responsibility includes designing, implementing and maintaining internal controls relevant to the preparation and fair presentation of the financial statements that are free from material misstatement, whether due to fraud or error; selecting and applying appropriate accounting policies; and making accounting estimates that are reasonable in the circumstances.

### Auditor's Responsibility

Our responsibility is to express an opinion on the financial statements based on our audit. We conducted our audit in accordance with Australian Auditing Standards. These Auditing Standards require that we comply with relevant ethical requirements relating to audit engagements and plan and perform the audit to obtain reasonable assurance whether the financial statements are free from material misstatement.

An audit involves performing procedures to obtain audit evidence about the amounts and disclosures in the financial statements. The procedures selected depend on the auditor's judgment, including the assessment of the risks of material misstatement of the financial statements, whether due to fraud or error. In making those risk assessments, the auditor considers internal control relevant to the entity's preparation and fair presentation of the financial statements in order to design audit procedures that are appropriate in the circumstances, but not for the purpose of expressing an opinion on the effectiveness of the entity's internal control. An audit also includes evaluating the appropriateness of accounting policies used and the reasonableness of accounting estimates made by the directors, as well as evaluating the overall presentation of the financial statements.

We believe that the audit evidence we have obtained is sufficient and appropriate to provide a basis for our audit opinion.



**INDEPENDENT AUDITOR'S REPORT TO THE MEMBERS OF ROYAL  
QUEENSLAND LAWN TENNIS ASSOCIATION LTD  
(continued)**

**Independence**

In conducting our audit, we have complied with the independence requirements of the Corporations Act 2001.

**Auditor's Opinion**

In our opinion,

- (a) the financial report of Royal Queensland Lawn Tennis Association Ltd is in accordance with the *Corporations Act 2001*, including:
  - (i) giving a true and fair view of the company's financial position as at 30 June 2010 and its performance for the year ended on that date; and
  - (ii) complying with Australian Accounting Standards (including the Australian Accounting Interpretations) and the *Corporations Regulations 2001*.

A handwritten signature in black ink that reads 'Lawler Hacketts'.

**Lawler Hacketts**

A handwritten signature in black ink that reads 'Shaun Lindemann'.

**Shaun Lindemann  
Partner**

Brisbane, 14 September 2010

## Financial Statements

### STATEMENT OF COMPREHENSIVE INCOME – FOR THE YEAR ENDED 30 JUNE 2010

	NOTES	2010 \$	2009 \$
Revenue from ordinary activities	2	2,863,135	3,083,851
Expenses from ordinary activities			
Player Development		(185,820)	(260,244)
Community Tennis		(747,766)	(752,936)
Tournament Program		(277,170)	(275,314)
Technical Services		(164,937)	(136,609)
Marketing and Public Relations		(258,909)	(252,925)
Finance and Administration		(590,857)	(531,800)
Queensland Tennis Centre		(410,571)	(480,967)
Depreciation		(50,663)	(48,038)
		(2,686,693)	(2,738,834)
Surplus from operating activities before income tax expense		176,442	345,017
Revenue from other activities	5	-	366,000
Expenses for other activities			
Queensland Tennis Centre	5	(14,686)	(1,866,058)
Regional Tennis Facilities Program		(840,638)	(171,338)
Disposal of financial and non-current assets	3	-	(405,760)
Net (deficit) after other activities		(678,883)	(1,732,139)
Income tax expense	1 (b)	-	-
Net (deficit) after other activities		(678,883)	(1,732,139)
<b>Other comprehensive income</b>			
Net gain / (loss) on revaluation of financial assets, net of tax		168,331	(98,646)
<b>Other comprehensive income</b>		<b>168,331</b>	<b>(98,646)</b>
<b>Total comprehensive income for the year</b>		<b>(510,552)</b>	<b>(1,830,785)</b>

The Statement of Comprehensive Income should be read in conjunction with the notes on pages 54 to 66.

**STATEMENT OF FINANCIAL POSITION – AS AT 30 JUNE 2010**

	NOTES	2010 \$	2009 \$
<b>CURRENT ASSETS</b>			
Cash	6	4,482,714	2,312,100
Receivables	7	273,742	274,471
Financial Assets – available for sale	8	2,924,904	2,675,306
Prepaid expenses	9	73,285	51,256
<b>TOTAL CURRENT ASSETS</b>		<b>7,754,645</b>	<b>5,313,133</b>
<b>NON-CURRENT ASSETS</b>			
Prepaid expenses	10	896,667	936,667
Property, plant and equipment	11	65,620	114,444
<b>TOTAL NON-CURRENT ASSETS</b>		<b>962,287</b>	<b>1,051,111</b>
<b>TOTAL ASSETS</b>		<b>8,716,931</b>	<b>6,364,244</b>
<b>CURRENT LIABILITIES</b>			
Accounts payable	12	646,207	340,195
Provisions	13	57,661	51,187
Deferred revenue	14	3,170,644	610,409
<b>TOTAL CURRENT LIABILITIES</b>		<b>3,874,512</b>	<b>1,001,790</b>
<b>NON-CURRENT LIABILITIES</b>			
Provisions	15	11,267	20,750
<b>TOTAL NON-CURRENT LIABILITIES</b>		<b>11,267</b>	20,750
<b>TOTAL LIABILITIES</b>		<b>3,885,779</b>	<b>1,022,540</b>
<b>NET ASSETS</b>		<b>4,831,152</b>	<b>5,341,704</b>
<b>MEMBERS' FUNDS</b>			
Retained Surplus		4,784,787	5,463,670
Available for sale investments reserve		46,365	(121,966)
<b>MEMBERS' FUNDS</b>		<b>4,831,152</b>	<b>5,341,704</b>

The Statement of Financial Position should be read in conjunction with the notes on pages 54 to 66.

## Financial Statements (CONT.)

### STATEMENT OF CHANGES IN EQUITY – FOR THE YEAR ENDED 30 JUNE 2010

	Retained surplus	Asset revaluation reserve*	Total
<b>2010</b>			
Balance at beginning of year	5,463,670	(121,966)	5,341,704
Net (deficit) / surplus for the year	(678,883)	-	(678,883)
Other comprehensive income	-	168,331	168,331
Balance at 30 June 2010	<b>4,784,787</b>	<b>46,365</b>	<b>4,831,152</b>
<b>2009</b>			
Balance at beginning of year	7,195,809	(23,320)	7,172,489
Net (deficit) / surplus for the year	(1,732,139)	-	(1,732,139)
Other comprehensive income	-	(98,646)	(98,646)
Balance at 30 June 2009	<b>5,463,670</b>	<b>(121,966)</b>	<b>5,341,704</b>

\* Asset revaluation reserve records revaluation increments and decrements (that do not represent impairment write-downs) that relate to financial assets that are classified as available-for-sale

The Statement of Changes in Equity should be read in conjunction with the notes on pages 54 to 66.

## Financial Statements (CONT.)

### STATEMENT OF CASH FLOWS – FOR THE YEAR ENDED 30 JUNE 2010

	NOTES	2010 \$	2009 \$
<b>Cash flows from operating activities:</b>			
Receipts from customers/sponsors		6,105,822	5,611,195
Payments to suppliers and employees		(4,017,612)	(8,459,572)
Dividends and interest received		165,510	405,710
Net cash provided/ (used) in operating activities	16(b)	2,253,720	(2,442,667)
<b>Cash flows from investing activities:</b>			
Proceeds from sale of financial assets		-	2,520,020
Payments for financial assets		(81,267)	-
Payments for purchases of PP&E		(1,839)	(94,709)
Net cash used in investing activities		(83,106)	2,425,311
<b>Cash flows from financing activities:</b>			
Repayments for lease liabilities		-	-
Net cash received from financing activities		-	-
Net increase / (decrease) in cash held		2,170,614	(17,356)
Cash at beginning of period		2,312,100	2,329,456
Cash at end of period	16(a)	4,482,714	2,312,100

The Statement of Cash Flows should be read in conjunction with the notes on pages 54 to 66.

## Financial Statements (CONT.)

### NOTES TO THE FINANCIAL STATEMENTS FOR THE YEAR ENDED 30 JUNE 2010

#### 1. SUMMARY OF SIGNIFICANT ACCOUNTING POLICIES

The financial statements are for Royal Queensland Lawn Tennis Association Ltd (“the Association”) as an individual entity incorporated and domiciled in Australia. Royal Queensland Lawn Tennis Association Ltd is a company limited by guarantee. The principal office and registered office of the Association is 190 King Arthur Terrace, Tennyson, Queensland.

##### **a) Basis of Preparation**

The financial report is a general purpose financial report that has been prepared in accordance with Australian Accounting Standards (including Australian Accounting Interpretations) of the Australian Accounting Standards Board and the *Corporations Act 2001*.

Australian Accounting Standards set out accounting policies that the AASB has concluded would result in a financial report containing relevant and reliable information about transactions, events and conditions. Material accounting policies adopted in the preparation of this financial report are presented below and have been consistently applied unless otherwise stated.

The financial report has been prepared on an accruals basis and is based on historical costs, modified, where applicable, by the measurement at fair value of selected non-current assets, financial assets and financial liabilities.

##### **b) Income Tax**

The Association is exempt from income tax under section 50-45 of the Income Tax Assessment Act. Accordingly no provision for income taxes has been made in these financial statements.

##### **c) Revenue recognition**

Revenue is measured at the fair value of the consideration received or receivable. Amounts disclosed as revenue are net of returns, trade allowances, rebates and amounts collected on behalf of third parties.

The Association recognises revenue when the amount of revenue can be reliably measured, it is probable that future economic benefits will flow to the entity and specific criteria have been met for each of the Association’s activities as described below. The amount of revenue is not considered to be reliably measurable until all contingencies relating to the sale have been resolved. The Association bases its estimates on historical results, taking into consideration the type of customer, the type of transaction and the specifics of each arrangement.

Revenue is recognised for the major business activities as follows:

##### *Grants*

Grants from the government and Tennis Australia are recognised at their fair value where there is a reasonable assurance that the grant will be received and the Association will comply with all attached conditions.

Government grants relating to costs are deferred and recognised in the statement of comprehensive income over the period necessary to match them with the costs that they are intended to compensate.

##### *Registration fees*

Registration fee revenue is recognised when no significant uncertainty as to its collectability exists.



## Financial Statements (CONT.)

### NOTES TO THE FINANCIAL STATEMENTS FOR THE YEAR ENDED 30 JUNE 2010 (CONT.)

#### 1. SUMMARY OF SIGNIFICANT ACCOUNTING POLICIES (continued)

##### *Interest Revenue*

Interest revenue is recognised using the effective interest rate method, which for floating rate financial assets is the rate inherent in the instrument.

##### *Dividends*

Dividends are recognised as revenue when the right to receive payment is established.

##### *Other Revenue*

Other revenue comprises revenue earned from the provision of products or services and is recognised when the goods are provided, or when the fee in respect of services is receivable.

#### **d) Cash**

Cash includes cash on hand and deposits with an original maturity of three months or less.

#### **e) Financial Instruments**

##### *Initial recognition and measurement*

Financial assets and financial liabilities are recognised when the entity becomes a party to the contractual provisions to the instrument. For financial assets, this is equivalent to the date that the company commits itself to either purchase or sell the asset (ie trade date accounting is adopted). Financial instruments are initially measured at fair value plus transactions costs except where the instrument is classified 'at fair value through profit or loss' in which case transaction costs are expensed to profit or loss immediately.

##### *Classification and subsequent measurement*

Financial instruments are subsequently measured at either fair value, amortised cost using the effective interest rate method or cost. *Fair value* represents the amount for which an asset could be exchanged or a liability settled, between knowledgeable, willing parties. Where available, quoted prices in an active market are used to determine fair value. In other circumstances, valuation techniques are adopted.

*Amortised cost* is calculated as:

- (i) the amount at which the financial asset or financial liability is measured at initial recognition;
- (ii) less principal repayments;
- (iii) plus or minus the cumulative amortisation of the difference, if any, between the amount initially recognised and the maturity amount calculated using the *effective interest method*; and
- (iv) less any reduction for impairment.

The *effective interest method* is used to allocate interest income or interest expense over the relevant period and is equivalent to the rate that exactly discounts estimated future cash payments or receipts (including fees, transaction costs and other premiums or discounts) through the expected life (or when this cannot be reliably predicted, the contractual term) of the financial instrument to the net carrying amount of the financial asset or financial liability. Revisions to expected future net cash flows will necessitate an adjustment to the carrying value with a consequential recognition of an income or expense in profit or loss.

## Financial Statements (CONT.)

### NOTES TO THE FINANCIAL STATEMENTS FOR THE YEAR ENDED 30 JUNE 2010 (CONT.)

#### 1. SUMMARY OF SIGNIFICANT ACCOUNTING POLICIES (continued)

*(i) Financial assets at fair value through profit or loss*

Financial assets are classified at 'fair value through profit or loss' when they are held for trading for the purpose of short-term profit taking, or where they are derivatives not held for hedging purposes, or when they are designated as such to avoid an accounting mismatch or to enable performance evaluation where a group of financial assets is managed by key management personnel on a fair value basis in accordance with a documented risk management or investment strategy. Such assets are subsequently measured at fair value with changes in carrying value being included in profit or loss.

*(ii) Loans and receivables*

Loans and receivables are non-derivative financial assets with fixed or determinable payments that are not quoted in an active market and are subsequently measured at amortised cost.

Loans and receivables are included in current assets, except for those which are not expected to mature within 12 months after the end of the reporting period, which will be classified as non-current assets.

*(iii) Held-to-maturity investments*

Held-to-maturity investments are non-derivative financial assets that have fixed maturities and fixed or determinable payments, and it is the entity's intention to hold these investments to maturity. They are subsequently measured at amortised cost.

Held-to-maturity investments are included in non-current assets, except for those which are expected to mature within 12 months after the end of the reporting period.

If during the period the company sold or reclassified more than an insignificant amount of the held-to-maturity investments before maturity, the entire held-to-maturity investment would be tainted and reclassified as available-for-sale.

*(iv) Available-for-sale financial assets*

Available-for-sale financial assets are non-derivative financial assets that are either not capable of being classified into other categories of financial assets due to their nature, or they are designated as such by management. They comprise investments in the equity of other entities where there is neither a fixed maturity nor fixed or determinable payments.

Available-for-sale financial assets are included in non-current assets, except for those which are expected to be disposed of within 12 months after the end of the reporting period.

*(v) Financial liabilities*

Non-derivative financial liabilities (excluding financial guarantees) are subsequently measured at amortised cost.

#### **Fair value**

Fair value is determined based on current bid prices for all quoted investments. Valuation techniques are applied to determine the fair value for all unlisted securities, including recent arm's length transactions, reference to similar instruments and option pricing models.

## NOTES TO THE FINANCIAL STATEMENTS FOR THE YEAR ENDED 30 JUNE 2010 (CONT.)

### 1. SUMMARY OF SIGNIFICANT ACCOUNTING POLICIES (continued)

#### Impairment

At the end of each reporting period, the entity assesses whether there is objective evidence that a financial instrument has been impaired. In the case of available-for-sale financial instruments, a prolonged decline in the value of the instrument is considered to determine whether an impairment has arisen. Impairment losses are recognised in the statement of comprehensive income.

#### Derecognition

Financial assets are derecognised where the contractual rights to receipt of cash flows expires or the asset is transferred to another party whereby the entity no longer has any significant continuing involvement in the risks and benefits associated with the asset. Financial liabilities are derecognised where the related obligations are either discharged, cancelled or expired. The difference between the carrying value of the financial liability, which is extinguished or transferred to another party and the fair value of consideration paid, including the transfer of non-cash assets or liabilities assumed, is recognised in profit or loss.

#### f) Plant and Equipment

Plant and equipment are measured on the cost basis less depreciation and impairment losses.

The carrying amount of plant and equipment is reviewed annually by directors to ensure it is not in excess of the recoverable amount from these assets. The recoverable amount is assessed on the basis of the expected net cash flows that will be received from the assets employment and subsequent disposal. The expected net cash flows have been discounted to their present values in determining recoverable amounts.

Plant and equipment that have been contributed at no cost, or for nominal cost are valued and recognised at the fair value of the asset at the date it is acquired.

#### Depreciation

The depreciable amount of all fixed assets including buildings and capitalised lease assets, but excluding freehold land, is depreciated on a straight line basis over the asset's useful life to the entity commencing from the time the asset is held ready for use. Leasehold improvements are depreciated over the shorter of either the unexpired period of the lease or the estimated useful lives of the improvements.

The depreciation rates used for each class of depreciable assets are:

<b>Class of Fixed Asset</b>	<b>Depreciation Rate</b>
Plant and equipment	25%–33%

#### g) Leases

Operating leases are leases under which the lessors effectively retain substantially all of the risks and benefits of ownership of lease items. Payments under operating leases are charged as expenses on a straight-line basis over the lease term.

## Financial Statements (CONT.)

### NOTES TO THE FINANCIAL STATEMENTS FOR THE YEAR ENDED 30 JUNE 2010 (CONT.)

#### 1. SUMMARY OF SIGNIFICANT ACCOUNTING POLICIES (continued)

##### **h) Employee entitlements**

Provision is made for the company's liability for employee benefits arising from services rendered by employees to the end of the reporting period. Employee benefits that are expected to be settled within one year have been measured at the amounts expected to be paid when the liability is settled. Employee benefits payable later than one year have been measured at the present value of the estimated future cash outflows to be made for those benefits. In determining the liability, consideration is given to employee wage increases and the probability that the employee may not satisfy vesting requirements. Those cash outflows are discounted using market yields on national government bonds with terms to maturity that match the expected timing of cash flows.

##### **i) Trade and Other Payables**

Trade and other payables represent the liability outstanding at the end of the reporting period for goods and services received by the company during the reporting period which remain unpaid. The balance is recognised as a current liability with the amounts normally paid within 30 days of recognition of the liability.

##### **j) Functional and presentation currency**

The financial statements are presented in Australian dollars which is the Association's functional and presentation currency.

##### **k) Comparative Figures**

Where required by Accounting Standards, comparative figures have been adjusted to conform to changes in presentation for the current financial year.

When an entity applies an accounting policy retrospectively, makes a retrospective restatement or reclassifies items in its financial statements, a statement of financial position as at the beginning of the earliest comparative period must be disclosed.

##### **l) Goods and Services Tax (GST)**

Revenues, expenses and assets are recognised net of the amount of GST, except where the amount of GST incurred is not recoverable from the Tax Office. In these circumstances, the GST is recognised as part of the cost of acquisition of the asset or as part of an item of the expense. Receivables and payables in the balance sheet are shown inclusive of GST.

Cash flows are presented in the statement of cash flows on a gross basis, except for the GST component of investing and financing activities, which are disclosed as operating cash flows.

##### **m) Impairment of Assets**

At the end of each reporting period, the entity reviews the carrying values of its tangible and intangible assets to determine whether there is any indication that those assets have been impaired. If such an indication exists, the recoverable amount of the asset, being the higher of the asset's fair value less costs to sell and value in use, is compared to the asset's carrying value. Any excess of the asset's carrying value over its recoverable amount is expensed to the statement of comprehensive income.

Where the future economic benefits of the asset are not primarily dependent upon the asset's ability to generate net cash inflows and when the entity would, if deprived of the asset, replace its remaining future economic benefits, value in use is determined as the depreciated replacement cost of an asset.

## NOTES TO THE FINANCIAL STATEMENTS FOR THE YEAR ENDED 30 JUNE 2010 (CONT.)

### 1. SUMMARY OF SIGNIFICANT ACCOUNTING POLICIES (continued)

#### m) Impairment of Assets (continued)

Where it is not possible to estimate the recoverable amount of an assets class, the entity estimates the recoverable amount of the cash-generating unit to which the class of assets belong.

Where an impairment loss on a revalued asset is identified, this is debited against the revaluation surplus in respect of the same class of asset to the extent that the impairment loss does not exceed the amount in the revaluation surplus for that same class of asset.

#### n) Adoption of New and Revised Accounting Standards

During the current year the company adopted all of the new and revised Australian Accounting Standards and Interpretations applicable to its operations which became mandatory.

The adoption of these standards has impacted the recognition, measurement and disclosure of certain transactions. The following is an explanation of the impact the adoption of these standards and interpretations has had on the financial statements of the Association.

#### AASB 101: Presentation of Financial Statements

In September 2007 the Australian Accounting Standards Board revised AASB 101 and as a result, there have been changes to the presentation and disclosure of certain information within the financial statements. Below is an overview of the key changes and the impact on the company's financial statements.

##### *Disclosure impact*

Terminology changes – The revised version of AASB 101 contains a number of terminology changes, including the amendment of the names of the primary financial statements.

Reporting changes in equity – The revised AASB 101 requires all changes in equity arising from transactions with owners, in their capacity as owners, to be presented separately from non-owner changes in equity. Owner changes in equity are to be presented in the statement of changes in equity, with non-owner changes in equity presented in the statement of comprehensive income. The previous version of AASB 101 required that owner changes in equity and other comprehensive income be presented in the statement of changes in equity.

Statement of comprehensive income – The revised AASB 101 requires all income and expenses to be presented in either one statement, the statement of comprehensive income, or two statements, a separate income statement and a statement of comprehensive income. The previous version of AASB 101 required only the presentation of a single income statement.

The company's financial statements now contain a statement of comprehensive income.

Other comprehensive income – The revised version of AASB 101 introduces the concept of 'other comprehensive income' which comprises of income and expenses that are not recognised in profit or loss as required by other Australian Accounting Standards. Items of other comprehensive income are to be disclosed in the statement of comprehensive income. Entities are required to disclose the income tax relating to each component of other comprehensive income. The previous version of AASB 101 did not contain an equivalent concept.

## Financial Statements (CONT.)

### NOTES TO THE FINANCIAL STATEMENTS FOR THE YEAR ENDED 30 JUNE 2010 (CONT.)

#### 1. SUMMARY OF SIGNIFICANT ACCOUNTING POLICIES (continued)

##### **o) New Accounting Standards for Application in Future Periods**

The AASB has issued new and amended Accounting Standards and Interpretations that have mandatory application dates for future reporting periods and which the association has decided not to early adopt. A discussion of those future requirements and their impact on the association is as follows:

- AASB 9: Financial Instruments and AASB 2009–11: Amendments to Australian Accounting Standards arising from AASB 9 [AASB 1, 3, 4, 5, 7, 101, 102, 108, 112, 118, 121, 127, 128, 131, 132, 136, 139, 1023 & 1038 and Interpretations 10 & 12] (applicable for annual reporting periods commencing on or after 1 January 2013).  
These Standards are applicable retrospectively and amend the classification and measurement of financial assets. The company has not yet determined any potential impact on the financial statements.
- AASB 124: Related Party Disclosures (applicable for annual reporting periods commencing on or after 1 January 2011).  
No changes are expected to materially affect the Association.
- AASB 2009–12: Amendments to Australian Accounting Standards [AASBs 5, 8, 108, 110, 112, 119, 133, 137, 139, 1023 & 1031 and Interpretations 2, 4, 16, 1039 & 1052] (applicable for annual reporting periods commencing on or after 1 January 2011).  
No changes are expected to materially affect the Association.

The Association does not anticipate early adoption of any of the above Australian Accounting Standards.

#### 2. REVENUE

	2010 \$	2009 \$
Operating activities:		
Annual Association registration fees	485,213	483,561
Tournaments and activities receipts, sponsorships, subsidies	2,210,412	2,194,580
Dividends and interest	167,510	405,710
	<b>2,863,135</b>	<b>3,083,851</b>

#### 3. OTHER INCOME

Net gain/(loss) on disposal of available-for-sale financial assets	-	(405,760)
	-	<b>(405,760)</b>

#### 4. EXPENSES

(Deficit) / surplus before tax includes the following specific expenses:

Expenses:		
Depreciation of non-current assets		
- Plant and equipment	50,663	48,038
Rental expenses relating to operating leases	43,229	42,221
Employee benefit expenses	1,133,201	1,095,414

## NOTES TO THE FINANCIAL STATEMENTS FOR THE YEAR ENDED 30 JUNE 2010 (CONT.)

### 5. REVENUE/EXPENSES FROM OTHER ACTIVITIES

	2010	2009
	\$	\$
During the 2009 financial year the Association made significant contributions to the facilities at the new Queensland Tennis Centre:		
Total contributions paid to Queensland Government for Queensland Tennis Centre	-	2,866,058
Less: attributed to office rent paid in advance	(a)	-
		(1,000,000)
Balance attributed to naming rights	(b)	-
		1,866,058
Less: contribution received from Tennis Australia	(c)	-
		(366,000)
Other	14,686	-
Net contributions by the Association	<u>14,686</u>	<u>1,500,058</u>

- (a) The Association has entered into a 25 year lease in relation to office premises at the Queensland Tennis Centre with no further rent payable over the period of the lease. The prepaid rent is being expensed over the period of the lease on a straight line basis.
- (b) \$1,866,058 was attributed by Government to naming rights in relation to the Queensland Tennis Centre. As these naming rights are not expected to generate a commercial return, this amount was expensed in full in the year ended 30 June 2009.
- (c) Contributions received from Tennis Australia towards the Tennis Queensland contribution for construction of the new Queensland Tennis Centre.

### 6. CASH

Cash on hand	500	500
Cash at bank	3,951,516	1,302,483
Term deposits	530,698	1,009,117
	<u>4,482,714</u>	<u>2,312,100</u>

### 7. RECEIVABLES

Trade debtors	258,021	221,685
Sundry debtors	15,721	52,786
	<u>273,742</u>	<u>274,471</u>

Due to the short term nature of these receivables, their carrying amount is assumed to approximate their fair value.

### 8. FINANCIAL ASSETS

Available –for-sale financial assets:		
Listed investments at fair value		
- Shares and fixed interest securities in listed corporations	1,438,931	1,262,214
- Managed Funds	355,618	483,338
- Cash and Equivalents	1,130,355	929,754
	<u>2,924,904</u>	<u>2,675,306</u>

As at 30 June 2010 no individual holding in shares, fixed interest securities or managed funds accounted for more than 10% of the total investment portfolio.

## Financial Statements (CONT.)

### NOTES TO THE FINANCIAL STATEMENTS FOR THE YEAR ENDED 30 JUNE 2010 (CONT.)

#### 9. PREPAID EXPENSES

	2010 \$	2009 \$
Prepayments	33,285	11,256
Prepayments – State office lease	40,000	40,000
	<b>73,285</b>	<b>51,256</b>

Due to the short term nature of these receivables, their carrying amount is assumed to approximate their fair value.

#### 10. PREPAID EXPENSES

	2010 \$	2009 \$
Prepayments – State office lease	896,667	936,667
	<b>896,667</b>	<b>936,667</b>

#### 11. NON-CURRENT ASSETS – PLANT AND EQUIPMENT

	2010 \$	2009 \$
<b>Plant and Equipment</b>		
Cost	275,276	273,437
Accumulated depreciation	(209,656)	(158,993)
	<b>65,620</b>	<b>114,444</b>

Reconciliations of the carrying amounts of each class of property, plant and equipment at the beginning and end of the current financial period as set out below:

	2010 \$	2009 \$
Opening carrying amount	114,444	67,773
Additions	1,839	94,709
Disposals	-	-
Depreciation	(50,663)	(48,038)
Closing carrying amount	<b>65,620</b>	<b>114,444</b>

#### 12. CURRENT LIABILITIES – ACCOUNTS PAYABLE

	2010 \$	2009 \$
Trade creditors and accruals	429,125	190,124
Sundry creditors	217,082	150,071
	<b>646,207</b>	<b>340,195</b>

Due to the short term nature of these payables, their carrying amount is assumed to approximate their fair value.

#### 13. CURRENT LIABILITIES - PROVISIONS

	2010 \$	2009 \$
Provision for annual leave	33,787	51,187
Provision for long service leave	23,874	-
	<b>57,661</b>	<b>51,187</b>



**NOTES TO THE FINANCIAL STATEMENTS FOR THE YEAR ENDED 30 JUNE 2010 (CONT.)****14. DEFERRED REVENUE**

	2010	2009
	\$	\$
Deferred revenue	3,170,644	610,409
	<b>3,170,644</b>	<b>610,409</b>

**15. NON-CURRENT LIABILITIES**

	2010	2009
	\$	\$
Provision for long service leave	11,267	20,750
	<b>11,267</b>	<b>20,750</b>

**16. NOTES TO THE STATEMENT OF CASH FLOWS****a) Reconciliation of Cash**

Cash at the end of the financial period shown in the statement of cash flows is reconciled to the related items in the balance sheet as follows:

	2010	2009
	\$	\$
Cash (Note 6)	<b>4,482,714</b>	<b>2,312,100</b>

**b) Reconciliation of the surplus/(deficit) from ordinary activities to the net cash flows from operations:**

	2010	2009
	\$	\$
(Deficit) / Surplus after income taxes	(678,883)	(1,732,139)
<i>Changes in operating assets and liabilities:</i>		
Depreciation	50,663	48,038
Loss on sale of financial assets	-	405,760
(Increase)/decrease in receivables	729	(66,464)
(Increase)/decrease in other	17,971	(984,731)
Increase/(decrease) in payables	306,012	126,870
Increase/(decrease) in provisions	(3,008)	45,043
Increase/(decrease) in other payables	2,560,235	(285,044)
	<b>2,253,720</b>	<b>(2,442,667)</b>

**17. COMMITMENTS FOR EXPENDITURE****(i) Operating Lease Commitments**

	2010	2009
	\$	\$
Not later than one year	-	-
Later than one year not later than two years	-	-
Later than two years not later than five years	-	-
TOTAL MINIMUM LEASE PAYMENTS	-	-

(ii) The Members of Tennis Queensland have approved a significant financial contribution toward the development of tennis facilities throughout Queensland, with the balance of \$995K toward the Regional Tennis Facilities Program over the next financial year.

## Financial Statements (CONT.)

### NOTES TO THE FINANCIAL STATEMENTS FOR THE YEAR ENDED 30 JUNE 2010 (CONT.)

#### 18. FINANCIAL RISK MANAGEMENT

a) The Association's principal financial investments comprise cash and cash equivalents, fixed interest securities, and Australian shares. With the exception of some term deposits, the Association's investment portfolio is managed by an external manager, Perpetual Trustee Company Limited. The Association's investment risk relates primarily to credit risk, market risk and interest rate risk, and is managed by:

- diversifying investments both across and within asset classes;
- ensuring investments in the Association's portfolio are approved investments;
- maintaining a disciplined asset allocation process via the identification of an appropriate long term strategic asset allocation, coupled with reviews and rebalancing

The Association does not enter into derivative transactions.

#### b) Interest rate risk

The Association's exposure to interest rate risks and the effective weighted interest rates for classes of financial assets and financial liabilities, both recognised and unrecognised at the balance date, are as follows:

2010: Financial Asset	Note	Floating Interest	Fixed Interest	Non-interest bearing	Total
Cash	6	3,951,516	530,698	500	4,482,714
Receivables	7	-	-	273,742	273,742
Available-for-Sale Assets	8	1,130,355	355,618	1,438,931	2,924,904
Prepaid expenses	9	-	-	73,285	73,285
<b>Total</b>		<b>5,081,871</b>	<b>886,316</b>	<b>1,786,458</b>	<b>7,754,645</b>
Weighted average interest rate		3.84%	4.82%	-	3.07%

2010: Financial Liability	Note	Floating Interest	Fixed Interest	Non-interest bearing	Total
Accounts payable	12	-	-	646,207	646,207
Deferred revenue	14	-	-	3,170,644	3,170,644
<b>Total</b>		<b>-</b>	<b>-</b>	<b>3,816,851</b>	<b>3,861,851</b>
Weighted average interest rate	-	-	-	-	-

Net financial asset/(liability)		5,081,871	886,316	(2,030,393)	3,937,794
---------------------------------	--	-----------	---------	-------------	-----------

2009: Financial Asset	Note	Floating Interest	Fixed Interest	Non-interest bearing	Total
Cash	6	1,302,483	1,009,117	500	2,312,100
Receivables	7	-	-	274,471	274,471
Available-for-Sale Assets	8	929,754	483,338	1,262,214	2,675,306
Prepaid expenses	9	-	-	51,256	51,256
<b>Total</b>		<b>2,232,237</b>	<b>1,492,455</b>	<b>1,588,441</b>	<b>5,313,133</b>
Weighted average interest rate		1.49%	3.45%	-	1.28%

## Financial Statements (CONT.)

### NOTES TO THE FINANCIAL STATEMENTS FOR THE YEAR ENDED 30 JUNE 2010 (CONT.)

#### 18. FINANCIAL RISK MANAGEMENT (continued)

2009: Financial Liability	Note	Floating Interest	Fixed Interest	Non-interest bearing	Total
Accounts payable	12	-	-	340,195	340,195
Deferred revenue	14	-	-	610,409	610,409
Total		-	-	950,604	950,604
Weighted average interest rate	-	-	-		
Net financial asset/(liability)		2,232,237	1,492,455	637,837	4,362,529

At 30 June 2010, if interest rates had moved up or down by 1%, with all other variables held constant, the deficit for the year would have been affected as follows:

	2010 \$	2009 \$
+ 1% (100 basis points) decrease/ (increase)	50,000	22,000
- 1% (100 basis points) decrease/ (increase)	(50,000)	(22,000)

#### c) Market risk

Market risk arises from investments in Australian and International equity securities. To limit this risk the Association diversifies its portfolio. The majority of equity investments are of a high quality and are publicly traded on either the ASX or equivalent international exchanges.

The aggregate net fair values of recognised financial assets and financial liabilities at balance date approximate the carrying values.

#### d) Credit risk exposures

The Association's maximum exposure to credit risk at balance date in relation to each class of recognised financial asset is the carrying amount of the assets as indicated in the balance sheet.

#### 19. CAPITAL RISK MANAGEMENT

Management controls the capital of the Association in order to maintain a good debt to equity ratio, and to ensure that the Association can fund its operations and continue as a going concern. The Association's capital is supported by financial assets. There are no externally imposed capital requirements.

Management effectively manages the Association's capital by assessing the Association's financial risks and adjusting its capital structure in response to changes in these risks and in the market.

There have been no changes to the strategy adopted by management to control the capital of the Association since the previous year.

#### 20. LIMITED LIABILITY

The Association is a company limited by guarantee. There is no authorised or issued share capital. If the Association is wound up, the liability of the members is limited to \$10 each (2009: \$10). As at 30 June 2010 the Association had 20 members (2009: 20).

## Financial Statements (CONT.)

### NOTES TO THE FINANCIAL STATEMENTS FOR THE YEAR ENDED 30 JUNE 2010 (CONT.)

#### 21. AUDITORS' REMUNERATION

	2010 \$	2009 \$
Pitcher Partners		
Amounts receivable or due and receivable by the auditors for:		
Auditing financial report (prior year)	-	4,500
	-	<b>4,500</b>
Lawler Hacketts (formerly Hacketts DFK)		
Auditing financial report	24,100	23,000
	<b>24,100</b>	<b>23,000</b>

The auditors receive no other benefits from the Association.

#### 22. REMUNERATION OF DIRECTORS

There was no income paid and payable, or otherwise made available in respect of the financial year, to all Directors of Royal Queensland Lawn Tennis Association Ltd, directly or indirectly, from the entity or any related party.

There were 8 Directors (2009: 8) in office during the year. The Directors received no remuneration for the services they performed during their time in office.

#### 23. RELATED PARTY DISCLOSURES

The names of each person holding position of Director of Royal Queensland Lawn Tennis Association Ltd at any time during the financial period are:

During the year, no other transactions occurred between the Association and member/director-related entities that were not within normal employee, customer or supplier relationships on terms and conditions no more favourable than those available to other employees, customers or suppliers, being the performance of contracts of employment; and the reimbursement of expenses.

There were no amounts of remuneration received or due and receivable by the Directors from the Association.

#### Key management personnel compensation

Key management personnel are:

Tom Larner (Chief Executive Officer), Darren Sibraa (Office Manager), Greg Lewis (Commercial Manager), Michael Blomer (Facilities Development Manager), Cherie Murphy (Tournament Manager) and Paul Cammack (Community Tennis Manager).

	Salary \$	Superannuation \$	Bonus \$	Non-Cash Benefits \$	Long Service Leave \$	Total \$
<b>2010</b>						
Total compensation	<b>470,364</b>	<b>42,242</b>	<b>18,000</b>	-	<b>14,391</b>	<b>544,997</b>
<b>2009</b>						
Total compensation	<b>434,565</b>	<b>40,081</b>	<b>10,000</b>	-	<b>20,750</b>	<b>505,396</b>



#### **DISCLAIMER**

The additional information presented on pages 68 to 69 is in accordance with the books and records of the Royal Queensland Lawn Tennis Association Ltd, which have been subjected to the auditing procedures applied in our statutory audit of the company for the year ended 30 June 2010. It will be appreciated that our audit did not cover all details of the additional information. Accordingly, we do not express an opinion on such financial information and no warranty of accuracy or reliability is given.

In accordance with our Firm policy, we advise that neither the Firm nor any member or employee of the Firm undertakes responsibility arising in any way whatsoever to any person (other than the company) in respect of such information, including any errors or omissions therein, arising through negligence or otherwise however caused.

*Lawler Hacketts*

**Lawler Hacketts Audit**

*Sg Lindemann*

**Shaun Lindemann  
Partner**

Brisbane, 14 September 2010

## Financial Statements (CONT.)

### DETAILED INCOME STATEMENT – FOR THE YEAR ENDED 30 JUNE 2010

	2010 \$	2009 \$
<b>OPERATING REVENUE</b>		
Affiliation fees	222,546	211,633
Ball sales	41,541	56,841
Course fees	-	5,177
Court hire	57,068	24,446
Entry fees	109,215	108,090
Foundation revenue	4,400	400
Fundraising income	1,150	1,140
Government grants	361,173	267,180
Interest income	61,838	96,326
Investment income	105,672	309,384
Memberships	485,483	483,561
Other grants	72,482	464,212
Player contributions	3,227	5,300
Project management income	25,560	15,642
Publication sales	-	36
Rental income	156,964	72,727
Room hire	13,300	4,691
Sanction fees	47,834	40,971
Sponsorship	245,965	352,190
Subscription income	255	445
Sundry income	13,308	55,752
TA grants & contributions	816,898	489,147
Ticket sales	17,256	18,240
<b>TOTAL REVENUE</b>	<b>2,863,135</b>	<b>3,083,851</b>
<b>LESS OPERATING EXPENSES</b>		
Advertising & promotions	70,103	38,890
Allowances paid	1,473	1,873
Audit fees	24,100	27,500
Bad debts	-	2,485
Ball purchases	58,890	75,185
Bank charges	654	1,183
Books, magazines & journals	-	949
Cleaning	52,560	22,629
Club grants	19,518	19,388
Computer expenses	425	434
Conferences & forums	32,139	52,293
Consultancy	53,354	178,907
Council rates	(8,028)	59,063
Court hire	80,568	56,358
Court supervisor expenses	1,849	4,809
Depreciation	50,663	48,038
Development initiatives	93,378	59,877
Electricity	61,758	42,614
Exhibition tours	21,339	17,333
FBT	1,472	1,472
Foundation expenses	4,400	400
Insurance	60,758	58,127
Legal fees	65,591	116,559
Memorabilia storage & development	4,333	2,885

## Financial Statements (CONT.)

### DETAILED INCOME STATEMENT – FOR THE YEAR ENDED 30 JUNE 2010 (CONT.)

	2010	2009
	\$	\$
<b>OPERATING EXPENSES (continued)</b>		
National Academy expenses	2,431	5,815
Photocopier expenses	7,000	4,378
Postage & courier	15,157	15,447
Printing	52,805	40,242
Prize money & trophies	87,169	85,593
Referees	23,244	35,007
Regional Initiative Program	60,129	54,782
Rent	43,229	42,221
Repairs & maintenance	69,782	18,143
Salaries	1,049,814	1,014,108
Security	22,121	14,685
Sponsor servicing	21,874	55,151
Sponsorship transfers	42,000	49,065
Staff amenities	4,467	2,181
Staff training	17,576	3,830
Stationery	9,280	9,940
Subscriptions	357	2,382
Subsidies	38,017	18,909
Sundry expenses	18,964	14,216
Superannuation	83,387	76,429
Telephone	45,754	39,170
Ticket purchases	12,769	9,301
Tournament director expenses	14,741	11,050
Tournament expenses	11,644	18,991
Travel & accommodation	119,395	92,201
Uniforms	5,112	3,479
Workers compensation	1,428	1,532
Xstrata program	55,750	111,336
<b>TOTAL OPERATING EXPENSES</b>	<b>2,686,693</b>	<b>2,738,834</b>
<b>NET SURPLUS / (DEFICIT)</b>	<b>176,442</b>	<b>345,017</b>
<b>PLUS REVENUE FROM OTHER ACTIVITIES</b>		
Tennis Australia contributions	-	366,000
<b>LESS EXPENSES FOR OTHER ACTIVITIES</b>		
Queensland Tennis Centre contributions	(14,686)	(1,866,058)
Regional Tennis Facility Program contributions	(840,638)	(171,338)
Gain / (loss) on disposal of available-for-sale financial asset	-	(405,760)
<b>NET SURPLUS / (DEFICIT) AFTER OTHER ACTIVITIES</b>	<b>(678,883)</b>	<b>(1,732,139)</b>



## Finance Report

*This was another significant year for Tennis Queensland from a financial perspective. Tennis Queensland continued to commit the financial contributions to the Regional Tennis Facilities Program that were previously approved by Company Members. During the year over \$840K was expended on this program, while a further \$15K was spent on capital works at the Queensland Tennis Centre.*

Before taking into account these payments, and other non-operating income and expenses, the Association recorded a surplus on its 'normal' operating activities of just over \$176,000. I regard this as a sound financial performance in another year of extremely tough economic conditions. This was achieved through very effective cost management.

Once again, the independent auditors have issued an unqualified audit report on the Association's Financial Statements for the year.

### Investment Portfolio

During the year, our investment and cash portfolio has reduced slightly from \$4.987M to a total value of \$4.703M. During the course of the 30 June 2010 financial year, payments totalling \$855K were made for QTC and RTFP contributions. As these contributions had been anticipated well in advance, we were able to fund these amounts from our cash reserves.

The portfolio as at 30 June 2010 continues to reflect a conservative investment strategy. As at that date, over 65% of our investments were held in cash and term deposits, with a further 10% held in domestic fixed interest securities. The balance is held in a share portfolio which is spread across nine industry sectors.

#### Investment Portfolio as at 30 June

	2010 \$'000	2009 \$'000	2010 %	2009 %
Cash (including term deposits)	2863	3242	61	65
Australian Fixed Interest	356	483	8	10
International Fixed Interest	-	-		
Australian Shares	1484	1262	31	25
International Shares	-	-		
<b>Total Investment Portfolio</b>	<b>4703</b>	<b>4987</b>	<b>100</b>	<b>100</b>

### Acknowledgements

Our very small team has continued to provide very effective and cost-efficient administration and financial services. This was another challenging year with the increased reporting requirements arising from our lease over the Queensland Tennis Centre.

I would also like to thank the Finance and Administration Committee and the Audit Committee for their continued commitment and support during the year. In particular I would like to acknowledge outgoing Treasurer, Ian Rodin, who resigned late in 2009 for his valuable support.

The Company Members recently elected Leonie Taylor to the Tennis Queensland Board, and I look forward to the continued support she has already committed in finance and corporate governance. The Finance & Administration Committee has a number of new faces and this will continue to ensure Tennis Queensland's reserves are well managed.





## Board of Directors, Staff & Members

### Board of Directors

<i>President:</i>	Ken Laffey
<i>Treasurer:</i>	Leonie Taylor
<i>Directors:</i>	Murray Whitbread Jim Kennedy Doug Kingston Mike Ford Ross Rolfe

### State Wide Body Members

<i>Queensland Primary Schools Tennis</i>	Vanette Tobin
<i>Queensland Secondary Schools Tennis</i>	Bob Campbell
<i>Tennis Coaches Australia Queensland</i>	Brad Harbottle
<i>Tennis Officials Australia Queensland</i>	Dell Dent

### State Office Staff

<i>CEO</i>	Tom Lerner
<i>Office Manager</i>	Darren Sibraa
<i>Facilities Development Manager</i>	Michael Blomer
<i>Finance &amp; Administration Coordinator</i>	Selva Thambaiyah
<i>Tournaments Manager</i>	Cherie Murphy
<i>Marketing &amp; Communications Coordinator</i>	Kara Millman
<i>Commercial Manager</i>	Greg Lewis
<i>Administration Assistant</i>	Courtney Haynes
<i>Tournament/Administration Assistant</i>	Alishia Hocking
<i>Member Services Officer</i>	Kristine Tran
<i>Regional Development Coach</i>	Matt Richards

### Community Tennis Officers

<i>Community Tennis Manager</i>	Paul Cammack
<i>North Region</i>	Elizabeth Jones
<i>Gold Coast Region</i>	Nathan Griffiths
<i>Far North Region</i>	Janine Jenner-Bruno
<i>South/West Region</i>	Richard Toye
<i>Sunshine Coast</i>	Donna Timm
<i>Central Region</i>	Ken Hick
<i>Metropolitan Region</i>	Elia Hill

### National Academy/ Coach Development

<i>National Coach</i>	David Hodge
<i>Athlete Development Manager</i>	Troy Ayres
<i>Strength and Conditioning Coach</i>	Grant Jenkins
<i>National Coach</i>	Scott Draper
<i>National Academy Coach</i>	Anthony Richardson
<i>Coach Development Coordinator</i>	Rob Leeds

### Queensland Tennis Centre

<i>Senior Groundsperson</i>	Jon Bonner
<i>Groundsperson</i>	Judd Percy



## Office Bearers, Committees & Delegates

### Committees

#### Tournaments and Events Committee

<i>Chair:</i>	Mr Murray Whitbread
<i>Consultative Groups:</i>	Troy Ayres, Mark Handley, Alan Harris, Gary Stickler, Ross Smythe, David Hodge, Mark Draper
<i>Employed Staff:</i>	CEO, Cherie Murphy

#### Player Development Committee

<i>Chair:</i>	Mr Ken Laffey
<i>Consultative Groups:</i>	Gary Stickler, Troy Ayres, David Hodge, Scott Draper, Murray Whitbread
<i>Employed Staff:</i>	CEO, Matt Richards

#### Marketing and PR Committee

<i>Chair:</i>	Doug Kingston
<i>Consultative Groups:</i>	Ross Rolfe, Ashley Cooper, Chris Freeman
<i>Employed Staff:</i>	CEO, Greg Lewis

#### Queensland Tennis Centre and Regional Facilities Committee

<i>Chair:</i>	Ashley Cooper
<i>Consultative Groups:</i>	Doug Kingston, Ross Rolfe
<i>Employed Staff:</i>	CEO, Michael Blomer

#### Government and Corporate Relations Committee

<i>Chair:</i>	Doug Kingston
<i>Consultative Groups:</i>	Ross Rolfe, Ashley Cooper, Chris Freeman, Ken Laffey, Jim Kennedy, Leonie Taylor

#### Community Tennis and Officials Committee

<i>Chair:</i>	Mike Ford
<i>Consultative Groups:</i>	Murray Whitbread, Jeff King-Koi, Graham Wicks, Ross Smythe, Glenn Vickery, Tom Robinson, Peter Davis, Arthur Ziakas, Theresa Braithwaite, Doug Kingston
<i>Employed Staff:</i>	CEO, CTM

#### Technical Services Advisory Group

<i>Chair:</i>	Ashley Cooper
<i>Consultative Groups:</i>	Maurice Philip, Bruce Lynch, John Chivers, Ross Jordin, Paul Bull
<i>Employed Staff:</i>	Michael Blomer

#### Disciplinary Tribunal

<i>Chair:</i>	Fred Albietz
<i>Consultative Groups:</i>	Trevor Fancutt, Bronwyn Draper
<i>Employed Staff:</i>	Darren Sibraa

#### Appeals Committee

<i>Chair:</i>	Rob O'Regan
<i>Consultative Groups:</i>	Mick Lyons, Don Muller, Daphne Fancutt, Dennis Draper
<i>Employed Staff:</i>	Darren Sibraa

#### Finance Administration Committee

<i>Chair:</i>	Leonie Taylor
<i>Consultative Groups:</i>	Jim Kennedy, Chris Freeman, Ross Rolfe
<i>Employed Staff:</i>	CEO, Darren Sibraa

#### Audit Committee (Sub Committee of Board)

<i>Chair:</i>	Leonie Taylor
<i>Consultative Groups:</i>	Jim Kennedy
<i>Employed Staff:</i>	CEO

#### Constitution and By Laws Committee

<i>Chair:</i>	Maurice Philip
<i>Consultative Groups:</i>	Murray Whitbread, Alan Harris, John Mullins
<i>Employed Staff:</i>	CEO, Darren Sibraa, Ken Hick

#### State Selection Committee

<i>Chair:</i>	David Hodge
<i>Consultative Groups:</i>	Mal Anderson, Troy Ayres, Scott Draper, Kerry Anne Guse, Graeme Brimblecombe
<i>Employed Staff:</i>	CEO, Matt Richards



## Affiliated Bodies – Financial Year 2009/10

### CENTRAL REGION

Athelstane Tennis Club	Dysart Tennis Club Inc	Mundubbera Tennis Association Inc
Baralaba Tennis Club Inc	Emerald and District Lawn Tennis Association Inc	Rockhampton Junior Tennis Association Inc
Bauhinia Tennis Club Inc	Fraser Coast Tennis Association Inc.	Rockhampton Tennis Association Inc
Blackwater North Jnr Tennis Club Inc	Gaydah & District Tennis Assoc Inc	Rosendale Tennis Club Inc
Bundaberg & District Junior Tennis Association Inc	Gladstone District Tennis Association Inc	SunCity Sports Club Inc
Bundaberg & District Tennis Association Inc	Hervey Bay & District Tennis Association Inc	SunCity Sports Club Inc
Bundaberg Seniors Tennis Club Inc	Isis Tennis Club	Tannum Sands Tennis Association Inc
Callide Valley Tennis Association Inc	Maryborough & District Jnr Tennis Assoc Inc	Tennis Veterans Rockhampton Association Inc
Dawson Callide Valleys Veteran Tennis Association	Middlemount Tennis Club Inc	Theodore Tennis Association Inc.
Dingo Tennis Club Inc	Monto & District Tennis Association Inc	Yeppoon Tennis Club Inc.
Dingo Tennis Club Inc	Moura Tennis Club Inc	

### FAR NORTH REGION

Atherton Tennis Club Inc	Freshwater Tennis Club Inc	Redlynch Valley Tennis Club Inc
Cairns Tennis Club Inc.	Gordonvale and District Tennis Assoc Inc	Trinity Beach Tennis Club Inc
Cardwell Tennis Club Inc	Innisfail District Tennis Association Inc	Tropical North Tennis Association Inc
Clifton Beach Tennis Club Inc	Malanda Tennis Club Inc.	Tully Tennis and Social Club Inc
Cooktown Tennis Club Inc	Mareeba Tennis Club Inc	Woree Tennis Club Inc
Earlville Tennis Club Inc	Mission Beach Tennis Club Inc	Yungaburra Tennis Club Inc
Edge Hill Tennis Club Inc.	Port Douglas Tennis Club Inc	
Edmonton Tennis Club Inc.	Ravenshoe Tennis Club Inc	

### GOLD COAST REGION

Beaudesert & District Tennis Association Inc	Gold Coast Mid-Week Ladies Tennis Association Inc	Playtennis, Palm Beach Currumbin Tennis Centre
Beenleigh Tennis Inc	Gold Coast Seniors Tennis Club Inc	Pro Experience
Bond University Tennis Club	Hope Island Tennis Club	Pro-One Tennis Academy
Breakpoint Tennis	Jimboomba Tennis Club Inc	Tallara Tennis Club Inc
Burleigh Heads Tennis Club Inc	Labrador Tennis Club Inc	Tamborine Mountain Tennis Club Inc
Currumbin Tennis Club	Miami Tennis Club Inc	Tennis Gold Coast Inc.
Discovery Park Tennis Club Inc	Mudgeeraba Tennis Club	The Azzura Tennis Club
Emerald Lakes Tennis Centre	Nerang Tennis Club Inc	Thursday Ladies Tennis Association
Fassifern Tennis Association Inc	Palm Beach Pastimes Tennis Club Inc	
Gold Coast Albert Junior Tennis Club Inc	Pimpama Island Tennis Association Inc	



## Affiliated Bodies – Financial Year 2009/10 (CONT.)

### METROPOLITAN REGION

Acacia Ridge Squash & Tennis	Tennis Association Inc	Redland Bay Tennis Club Inc
Ace Tennis Australia	Ipswich District Junior Tennis Association Inc	Redlands Lawn Tennis Association Inc
Ash Tennis	Ipswich Grammar School	Samford Tennis Club Inc.
Brisbane Ladies Tennis Association Inc	Ipswich Tennis Centre	Shaw Park Tennis Centre
Brisbane Night Tennis Association Inc	Karalee Tennis Centre	Sheldon Tennis Centre
Brisbane Seniors Tennis Club	Kelvin Grove State College	Sportennis (Le Victor P.L.)
Brookfield Tennis Centre	Laff's Mt Gravatt Tennis Centre	Steve & Trish Griffin
Brookwater Golf & Country Club	LifeTime International Pty Ltd	Sunnybank Tennis Centre
Cambridge Tennis	Matchpoint Tennis	Tall Gums Sports Centre
Coops Racquet Sports	Metropolitan Tennis Association Inc	Tennis Brisbane
Dayboro Tennis Club Inc	Millman Carindale Tennis Centre	Tennis Coaches Australia (Qld)
Everton Tennis & Gear	Newton Heath Tennis Centre	Tennis Seniors Queensland Association Inc
Fancutts Junior Tennis Club	Northside Ladies Tennis Club	The Gap Health & Racquet Club
Ferny Hills Tennis Centre	Pine Country Tennis Centre	The University of Queensland Tennis Club Inc
Frawley Racquet Club	Pine Rivers Tennis	Thorneside Community Tennis Association Inc
George Alder Tennis Centre	Queensland Catholic Lawn Tennis Assoc Inc	University of Queensland Tennis Centre
Greater Brisbane Junior Tennis Association Inc	Queensland Secondary School Tennis	West Brisbane Tennis Centre
Griffith University Tennis Centre	Queensland Tennis Centre	Whites Tennis Centre
Haines Tennis	Queensland Wheelchair Tennis Association	Woods Tennis Centre
Healthworks Ipswich	Redcliffe Tennis Association Inc	Wynnum District Lawn Tennis Association Inc
Ipswich & West Moreton		

### NORTH REGION

Ayr Tennis Association Inc	Home Hill Tennis Association Inc	Sarina & District Tennis Association Inc
Bowen Tennis Association Inc	Ingham Tennis Association Inc	Tennis Townsville Inc
Calen Tennis Association Inc	Mackay Junior Tennis Association Inc	Tennis Whitsunday
Charters Towers Tennis Club Inc	Mackay Tennis Association Inc	Townsville Tennis Club Inc
Cleveland Tennis Club Inc	Moranbah Tennis Association Inc	Valleys Tennis Club Inc
Collinsville Tennis Club Inc	Proserpine District Lawn Tennis Assoc Inc	Western Suburbs Tennis Club Inc
Gloucester Sport & Recreation Association Inc	Rupertswood Progress & Sporting Association Inc.	



## SOUTH REGION

Allora Tennis Club Inc	Lockyer Tennis Association Inc	Association Inc
Cecil Plains Tennis Club Inc	Newtown Centrals Tennis Club Inc.	Tara Tennis Club Inc
Chinchilla Tennis Association Inc	Pittsworth Tennis Club Inc	Taroom Tennis Club Inc
Clifton & District Tennis Association Inc	Range Tennis Club Inc	Texas Tennis Club
Dalby & District Tennis Association Inc	Ravensbourne Sporting Association Inc	Toowoomba Tennis Association Inc
Gatton Tennis Association Inc	Roma & District Tennis Club Inc	Wandoan Tennis Club Inc
Goondiwindi & District Tennis Association Inc	St George Tennis Club Inc	Warwick & District Tennis Association Inc
	Stanthorpe & District Tennis	Yuleba Lawn Tennis Club Inc.

## SUNSHINE COAST REGION

Ballinger Park Tennis Club	Kin Kin Tennis Club Inc	Palmwoods Tennis Club Inc
Bli Bli Tennis Club Inc	Kingaroy & District Tennis Association Inc	Peregian Tennis Club Inc
Caboolture & District Lawn Tennis Association Inc	Kronk Tennis	Pomona Tennis Club
Caloundra Tennis Association Inc	Landsborough Tennis Club Inc	Sunshine Coast Ladies Midweek Tennis Association
Conondale Tennis Club Inc	Maleny Tennis Club	Sunshine Coast Tennis Association Inc
Coolum Tennis Club Inc	Mapleton Tennis Club Inc.	Tanawha Valley Golf & Tennis
Cooroy Tennis Club Inc	Maroochydore Tennis Club Inc	Tennis Veterans Sunshine Coast Association Inc
Eudlo & District Tennis Association Inc	Matthew Flinders Anglican College	Tewantin Tennis Club Inc
Eumundi Tennis Club Inc	Mooloolaba Tennis Club Inc.	TFP Academy
Gheerulla Tennis Club	Murgon & District Tennis Association Inc	The Montville Tennis Club
Glenview Mooloolah Tennis Club Inc	Nambas Tennis Club Inc	Verrierdale Tennis Club Inc
Gympie & District Tennis Association	Nambour & District Tennis Association Inc	Witta Tennis Club Inc
Gympie Cooloola Veterans Tennis Assoc Inc	Nambour Heights Progress Association Tennis Club	Woombye Tennis Club Inc
Hyatt Regency Coolum	Noosa District Tennis Association Inc	Yandina Tennis Club
Imbil Tennis Club	Noosa Springs Country Club	Zoran's Tennis Academy
Kandanga Tennis Club	Noosa Tennis Club Inc	
Kawana Tennis Club Inc	Noosaville Tennis Club Inc	

## WEST REGION

Barcaldine Lawn Tennis Club Inc	Longreach Tennis Club Inc	Richmond Tennis Club
Copper City Tennis Club Inc	Morven & District Tennis Club	Tambo Sports Club
Corfield Sports Club Inc	Nebine Community Centre and Sporting Club Inc	Winton Tennis Club
Flinders Tennis Club Inc		



## Notes

A series of horizontal dotted lines for taking notes, spanning the width of the page below the 'Notes' header.

*It's a game and it's a passion.*

*It's an hour of fun and a lifetime commitment.*

*It's a six year old at primary school and his grandmother at Midweek Ladies.*

*It's the competition player working on his ITN rating and four mates slugging it out for bragging rights.*

*It's a manicured grass court and lines scratched on the beach.*

*It's a novice hitting a ball against the garden wall and a century of Aussie legends fighting for Davis Cup glory.*

*It's competing for your Club Championship, striving for the State Title, dreaming of the Australian Open.*

*It's getting fit with Tennis Workout and pushing the barriers in Wheelchair Tennis.*

*It's social and it's deadly serious.*

*It's our National Academies nurturing new Australian talent and lifting standards across the Asia Pacific.*

*And its coaches like Roche and Cahill guiding our stars to glory.*

*It's indoor and outdoor.*

*It's in the schools and on the streets.*

*It's boys and girls, and it's men and women.*

*It's all ages, all races, all people everywhere.*

*It's around the corner and all round the world.*

*It's cosmopolitan and it's as Australian as Vegemite.*

*It's made for a sunburnt country, a sport we love so much we play it anywhere and everywhere – in the suburbs, in the bush, in the outback, even on the rooftops of hotels.*

*It's in our blood, our history, our culture, our hearts.*

*It's a tradition we pass on to our sons and daughters, who pick up racquets from the time they can walk, bringing forth a new generation of Lavers and Rafter, Courts and Goolagongs.*

*It's you and me, and it's everyone we know.*

*It's everybody's sport.*

*It's the wonderful world of tennis. Australia's favourite.*



*Royal Queensland Lawn Tennis  
Association Limited trading as  
Tennis Queensland*

*190 King Arthur Terrace  
Tennyson Qld 4105  
PO Box 2366  
Graceville Qld 4075  
T +61 7 3120 7900  
F+ 61 7 3120 7929*

*ABN: 60 009 713 544  
ACN: 009 713 544*