



**Tennis Queensland**  
Annual Report 2014-15





## TABLE OF CONTENTS

04	QUEENSLAND BY THE NUMBERS
06	PRESIDENT'S REPORT
08	MESSAGE FROM TENNIS AUSTRALIA CEO
09	NATIONAL TENNIS VISION
10	CEO'S REPORT
11	QUEENSLAND STRATEGIC PLAN
12	CLUBS
14	PROGRAMS
16	FACILITIES
20	MARKETING & MEDIA
24	BRISBANE INTERNATIONAL
26	TOURNAMENTS & LEAGUES
36	PERFORMANCE
40	QUEENSLAND TENNIS COMMUNITY
45	OUR PARTNERS
46	FINANCIAL REPORT



# QUEENSLAND BY THE NUMBERS



**35,496**

No. of Tennis Qld Registered Players in 2015



**32,889**

ANZ Tennis Hot Shots & Cardio Tennis participants



**211**

No. of new & upgraded tennis courts built in 2014-15



**245**

Clubs/centres/associations affiliated with Tennis Queensland



**\$9.1M**

Amount invested in improving & growing local tennis courts



**226**

Schools in the National Schools Partnership Program

**9**

Queensland players reached Top 10 Australian Rankings within 2014-15



**#1 AUSTRALIAN MALE**  
Bernard Tomic



**#1 AUSTRALIAN FEMALE**  
Sam Stosur



**553**

No. of coach members delivering tennis



**62**

Teachers became Tennis Ambassadors



**97,031**

Spectators attended the Brisbane International 2015



**48,000**

Fans of the sport engaged at local tennis events & activations

**7,014**

Players registered to play in tennis competitions



**222**

Sanctioned tournaments were offered for aspiring athletes



**19**

Queensland players received scholarships to develop their game



**12**

Players ranked inside the Top 500 of the ATP/WTA rankings



**209k**

Queensland Money Race available prize money



**271,860**

Web users visited Tennis Queensland's websites



**46,624**

'Down the Line' newsletter subscribers



**2,584**

Followers connected to tennis via social media



**21,371**

No. of Tennis Qld channel views YouTube

# PRESIDENT'S REPORT



**MARK BLOOMFIELD**  
President

On behalf of Tennis Queensland's Board of Directors it gives me great pleasure to present to you the President's Report for 2014-15.

## A DEDICATED TEAM

Since my appointment in March 2015 I have been grateful for the support and assistance provided by my fellow board members Leonie Taylor (Treasurer), Murray Whitbread, Allan Harris, Doug Kingston, Ross Rolfe and Peter Robertson. They have volunteered their time and expertise to Tennis Queensland and have undertaken their duties with the upmost care and professionalism.

In saying that, our roles have been made so much easier by the tremendous efforts of outgoing President, Ken Laffey. Serving on Tennis Queensland's Board as a director and then as President since 2009, he has worked tirelessly towards furthering our game for the benefit of all Queenslanders. Ken was elected to the Tennis Australia board in October 2014, in accordance with our constitution he was required to step down from Tennis Queensland's Board. We thank Ken for his outstanding contribution to tennis in Queensland and wish him the best in his new role.

A special mention must also go to Peter Robertson who was our board elected President between the time of my election and Ken's resignation

In his dual role as Tennis Queensland CEO and Brisbane International Tournament Director, Cameron Pearson has led a small but dedicated team of professionals to administer tennis in Queensland and run the Brisbane International. Cameron has a very broad scope of responsibility and has managed the team well to ensure the best possible outcome for all stakeholders from our resources. I would particularly like to thank Cameron for the assistance he has provided to myself and the board, especially in achieving our strategic plan goals.

I would also like to acknowledge the assistance from Tennis Australia in particular, President Steve Healy, Vice President Chris Freeman and CEO Craig Tiley. Queensland has benefited from the significant changes that have been made in the areas of the Australian Open Series, player development and various participation initiatives.

The contribution from our volunteers and regional stakeholders cannot be forgotten. They are the lifeblood of our game and give countless hours week in and week out to ensure facilities are operated, maintained and available for use by the general public. I would encourage all Queenslanders to offer whatever assistance they can provide to their club at every opportunity so we can ensure the future viability of our sport. Additionally I encourage all affiliates to actively engage with their Regional Assembly. Tennis Queensland

relies on relationships with our Regional Assemblies for, among other things, communicating information, gathering feedback, appointing Participation Leaders and acquitting funding.

## FINANCIAL

I am pleased to report another strong financial performance for Tennis Queensland with a surplus of \$206,358 and member equity of \$3,997,467 at balance date. The company is in a very sound financial position and we continue to take a conservative approach to fiscal management as we work towards achieving our strategic goals, whilst mitigating risk. I thank Cameron and his team for working within tight budgetary constraints and delivering a high quality professional service to our stakeholders.

## GRASSROOTS TENNIS

Financial viability and sustainability of our affiliates remains a primary focus. Our core strategy is to assist clubs to engage with their community and develop new and exciting programs that retain existing and attract new members. This strategy is showing signs of success. An important indicator of the health of our sport is measured with our Registered Player numbers. During 2014-15 over 35,000 players registered to Tennis, up from 29,000 in 2013-14. Additionally another 32,000 players were registered as ANZ Tennis Hot Shots and Cardio Tennis participants.

This year saw the introduction of the Tennis funded "TennisConnect" program that encouraged clubs, coaches and schools to capture and connect with their wider tennis communities. This program was an outstanding success that resulted in an additional \$168,000 injected directly into club and coaching programs across the state plus a further \$110,000 directly to Tennis Queensland. These funds will be channelled into a number of state wide initiatives creating additional participation program opportunities for affiliates to assist with generating a steady flow of new and engaged players into the future.

## PLAYER HIGHLIGHTS

From a performance perspective Australia's top ranked players, Samantha Stosur and Bernard Tomic both call Queensland home. Fellow Queenslanders John Millman and Ajla Tomljanovic also performed well on the world stage during the year. Closer to home we saw nine athletes compete in the Australian Open Juniors, our 12/U girls and 14/U boys win the Australian Team Championships and the Tennis Brisbane Chargers win the Asia-Pacific Tennis League Play offs in Melbourne.

## BRISBANE INTERNATIONAL

The Brisbane International presented by Suncorp continued on the success from previous years and saw the return of Roger Federer and Maria Sharapova.

With attendance figures just shy of 100,000 and a worldwide television audience, the tournament continues to provide high exposure to our sport and city. I thank the State Government and Brisbane City Council for their support of this event. The Brisbane International also provides on-court experiences for the next generation of players and professional development opportunities for stakeholders including: Queensland Money Race Finals, Brisbane International Schools Challenge, Teacher's Workshop, Coaches Conference, Club Master Class and the President's Morning Tea.

Lastly I would like to congratulate Rod Laver, Roy Emerson and Ashley Cooper who were named 'Icons of Queensland Tennis' in a special on-court ceremony on Pat Rafter arena during the Brisbane International. Roy was also presented with Life Membership.

Looking forward we will continue to focus on promoting the financial viability of our affiliates and creating opportunities that will assist them to connect and engage with their local community. We are committed to assisting in this process and open to discussion and feedback.

I sincerely thank everyone associated with tennis in the state and look forward to continually giving my upmost to improve our sport in this great state.



# MESSAGE FROM TENNIS AUSTRALIA CEO



There is a real buzz about our sport, whether it be in the suburbs of Brisbane or in regional Queensland.

Loyalty, Excellence, Teamwork and Humility are the values that underpin our daily operations, complemented by an innate innovative streak.

We value our excellent and highly collaborative working relationship with Tennis Queensland, which we believe helps drive benefits for the sport throughout the community.

A special highlight has been the work Tennis Queensland has done on the new funding initiative, TennisConnect. The program offered clubs, coaches and schools the opportunity to earn a financial reward based on the number of people they connected to Tennis. More than 35,000 individuals connected to the sport in Queensland, resulting in more than \$168,000 in funding for local tennis communities.

It has been symptomatic of many of the areas in which we work together to help drive growth in tennis and support those who deliver it, whether they be clubs, administrators, associations, volunteers, coaches or parents.

The joint effort from the entire tennis community has led to an incredible surge in the popularity of ANZ Tennis Hot Shots, with more than 570,000 children across the nation enjoying the experience in the past 12 months and 1043 primary schools involved.

An additional 319 new or reconditioned courts have been delivered in the past year, with a total of 2154 courts delivered as part of the National Court Rebate Scheme since its inception in 2007. We continue to work together to provide quality facilities for players of all abilities at both metropolitan and regional locations.

Australian Open 2015 enjoyed a record attendance of 703,000 in a summer that also featured the global launch of FAST4 tennis and a brilliant Emirates Australian Open Series of lead-in events, attracting strong attendances and excellent viewing audiences on television and online around the world. That, of course, includes Brisbane International 2015 presented by Suncorp, which was very well run, highly entertaining and attracted great reviews from players and fans alike.

The appointment of Pat Rafter led to a restructuring of the Performance team with the aim of building on all the good work of recent years done in each of the National Academies.

The results from the Australian players have been encouraging but there is still plenty of work to be done at all levels and we are looking forward to continuing the journey.

There are exciting plans for the continued growth and development of our sport, from grassroots to the elite level. Participation initiatives including ANZ Tennis Hot Shots, FAST4 and our player registration program will remain a focus and continue to drive more people to play more tennis, more often at tennis courts around the country.

It has been an incredible year with a lot of successful outcomes but the most pleasing has been the growth, passion and collective effort of all our staff. They continue to excite and excel, pushing the boundaries and innovating every aspect of our business. We are ONE Team.

Thank you, your staff and Board, for your dedication, support and co-operation.

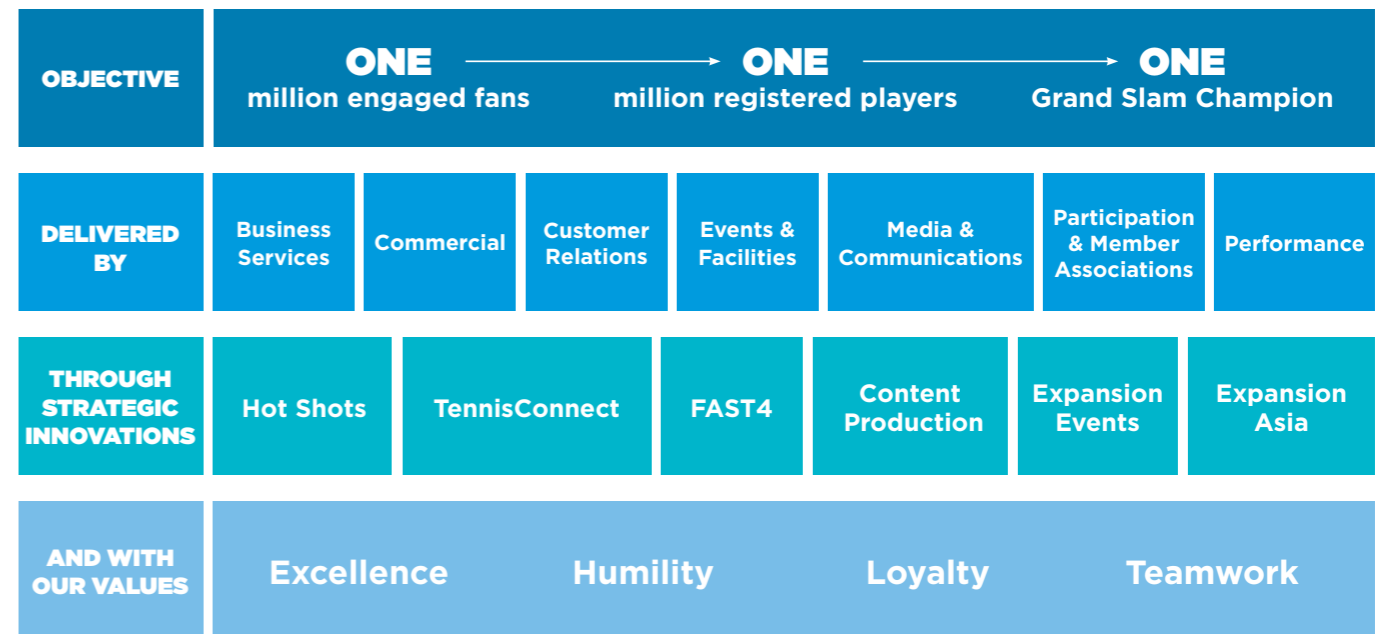
Of course, our sport would not be what it is today without the enduring support of the Australian tennis community. Players, coaches, officials, administrators and fans around the country are the often unsung heroes of tennis; thank you for your unrelenting contribution.

We are so fortunate to be part of such a passionate community and look forward to another year growing our great sport together.

**CRAIG TILEY**  
CEO  
Tennis Australia

# NATIONAL TENNIS VISION

The National Tennis Vision is a collective effort by the national body and all Member Associations. Our energy and focus is aligned to achieve these objectives:







# QUEENSLAND STRATEGIC PLAN

In a year in which we saw many highlights in the Queensland tennis community, I am delighted to provide this CEO's report for the 14/15 financial year.

At our core, we exist to service our affiliates and grow participation. As we move into the second year of our current strategic plan, I am pleased to report that we are continuing to grow affiliate benefits - with a plan to providing more in 2016 - and our club registered player numbers are up 10% over the past year and 139% since reform of affiliation three years ago. On top of this, and with the strong national alignment that exists, Tennis has made some significant program and product improvements and additions that will be the foundation for future growth.

As you will see in this Annual Report, Tennis Queensland (TQ) has reported a net operating surplus of \$206k, pushing member equity to just under \$4m. In a year that wasn't without its challenges, I am pleased to once again present a positive financial result that strengthens the organisation.

As a state we finished the financial year with 35,496 registered club players, and 32,889 Hot Shots and Cardio Tennis registrations. With our strategic plan in play and the support of the national body I know this number will continue to grow and Queensland will form a strong part of the target of one million players nationally through the strong network of our clubs, coaches and schools.

As a sport tennis has pushed the dial to focus on improving club health. Amongst the increase of benefits we have provided and will continue to grow, funding back to clubs and regions has increased significantly. Thanks to TennisConnect and the various grant programs available, TQ has nearly tripled direct cash incentives and grants available to affiliates over the

past five years - and this is something we are very keen to see continue to rise as our participation rates grow.

Tennis facilities - especially in south east Queensland - continues to be a concern. Whilst we are showing positive court growth with \$9.1m worth of new courts and facilities invested in Queensland in 14/15, we are behind the rest of Australia for courts per head of population. This is something we are focusing on even more now, and substantial energy going into building stronger relationships with local councils in Queensland - after all they are our number one stakeholder in terms of facilities. We want - and need - all Councils to ensure that tennis is an attractive community funding priority.

Queensland tournaments continue to shine nationally and internationally. We have a very strong annual calendar, led by the Rod Laver Championships at a junior level, the award winning Toowoomba International at a Pro Tour level, and of course our flagship event, the Brisbane International (BI). The BI again hosted an all-star cast of the world's best players, and another near record attendance. In true style, top seeds Maria Sharapova and Roger Federer were crowned the 2015 champions, with Roger chalking up win No. 1000 in the final. Looking forward to 2016 Brisbane will once again play host to the world's best led by the defending champions, but we will also once again celebrate all elements of the tennis community throughout the tournament. From the President's Brunch to the Schools Challenge to the Wheelchair event, the tennis community will come together in Brisbane in January once again.

I would like to thank the TQ Board for their selfless commitment to tennis, and their support of the TQ team. In particular I would like to acknowledge former President Ken Laffey for his many years of service on the TQ Board, and for all of TQs accomplishments under Ken's guidance. Ken's service to tennis continues with his election onto the Tennis Australia Board. Thanks must also go to Peter Robertson, who stepped in and led the organisation as interim Chairperson. Peter did, and continues to do a mountain of work behind the scenes to enhance the organisation. To newly elected President Mark Bloomfield, thank you for the ongoing support you give to the TQ team. Like the entire TQ Board, Mark is very committed to giving back to tennis.

Thank you also to Craig Tiley and the team at Tennis Australia (TA). We greatly value the partnership we have with TA, and are strongly aligned in delivering and growing tennis with them as well as our fellow Member Associations.

I want to also acknowledge the diligent, committed team at TQ, who cover the length and breadth of this vast state every day. This group continues to evolve as a team, advancing the interests of tennis above all else.

Lastly, but most importantly, I would like to recognise the tireless contributions of the volunteers in our clubs and Regional Assemblies who all share a love of the game of tennis. Thank you for your efforts year in year out in growing the game of tennis.

**CAMERON PEARSON**  
CEO  
Tennis Queensland

**VISION:** *Make tennis part of life for every Queenslander*

**AT OUR CORE:** Service our members (affiliates), and grow participation in tennis

**OUR VALUES:** EXCELLENCE, HUMILITY, LOYALTY & TEAMWORK



**COMMUNITY**  
MAKE TENNIS THE MOST ENGAGING AND INCLUSIVE SPORTING COMMUNITY IN THE STATE

**STRATEGIC OBJECTIVES**

Offer engaging tennis programs for every Queenslander

Ensure tennis participants can play a relevant and quality competition locally

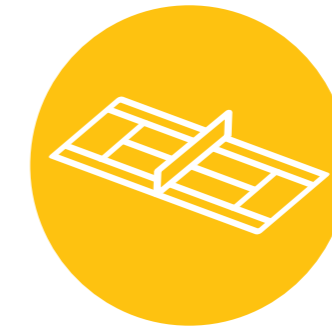
Use affiliation, membership and the Brisbane International to benefit the sport

Connect and interact people to tennis by providing an informative, enjoyable and exciting online experience

**IMMEDIATE PRIORITIES**

Project 80 - reinvigorating clubs through healthy competitions

Generate new partnership revenue for TQ



**PLACES TO PLAY**  
MORE WELCOMING AND SUSTAINABLE FACILITIES

**STRATEGIC OBJECTIVES**

Promote a variety of operating models to suit the needs of affiliates and facilities

Target areas for facility growth and consolidation

Develop the top five prioritised projects to be developed in the next three years

Maintain strong relationships with affiliates

Develop better relationships with all levels of government

**IMMEDIATE PRIORITIES**

Quality engagement with local councils and state government

Rural club sustainability program

Regional Tennis Centres - sustainability

Develop feasibility plan for building new facilities in south east Queensland



**CHAMPIONS**  
FOSTER AND CELEBRATE MORE CHAMPIONS\* FOR TENNIS THAN EVER BEFORE

\* A champion is someone who is passionate about our game/loves the game!

**STRATEGIC OBJECTIVES**

Support all administrators, volunteers and Regional Assemblies by providing best practice models and transparent governance

Offer high quality competition and training environments that are safe, demonstrate integrity and are available for all Queenslanders

Promote past success whilst striving to provide world class training environments

Reward fans with the best possible experience and encourage their participation in tennis

**IMMEDIATE PRIORITIES**

Tightening governance at Regional Assemblies and affiliated clubs

Promote FAST4 participation to Brisbane International fans



# CLUBS TENNIS IN QUEENSLAND

\$168k provided to local tennis communities through TennisConnect



## Clubs

A total of 245 affiliated clubs/centres/associations offered tennis to local communities across eight regions of Queensland in 2014-15. It is due to the support and passion of these clubs that the number of people playing the game continued to grow with 35,496 players registering to the sport in Queensland.

Thirty-one new courts were opened across the state to cope with the growing demand. More than 20 different clubs have invested in clubhouse or facility developments to provide a fresh new atmosphere and great tennis experience for their communities.

## Grants & Funding

### TennisConnect

A new major funding initiative was launched in 2014-15 providing all Queensland clubs, coaches and schools with the opportunity to earn financial reward based on the number of people who connected to Tennis through them.

The goal of TennisConnect was to connect more people to Tennis and better understand who plays, where they come from and what they value. Collecting this information assists us as the governing body to make better decisions about programs, resources and communications, and create the best tennis experience we can for players, fans, clubs and deliverers.

By offering incentives to the people or organisations that were involved, the program also acted as a guaranteed investment in the grassroots of tennis – the biggest direct funding program Tennis has ever embarked on.

Snapshot of success:

- 35,000 individual tennis players connected to the sport in Queensland
- Over \$168,000 in funding provided to local tennis communities to use on the projects and initiatives they deemed most important to their future
- \$110,000 of these funds went directly to Queensland clubs

**Heritage Bank Community Tennis Grants**  
Additional opportunities were available throughout the year providing affiliated tennis bodies access to grants and funding.

The annual Heritage Bank Community Tennis Grants program gave 24 clubs access to a share in over \$28,000 provided by Heritage Bank to put towards creating a welcoming tennis environment at their facility. This program continues to grow in popularity each year, as clubs are given the opportunity not only to improve their facilities, but also to get local media coverage and promotional support to promote their new offerings to the local community.

Congratulations to the 2015 recipients, listed in the following table:

CLUB	REGION
Clifton Beach Tennis Club	Far North
Mareeba Tennis Club Inc	Far North
Woree Tennis Club Inc	Far North
Ingham Tennis Association	North
Moranbah Tennis Association Inc	North
Tennis Townsville	North
Gladstone Tennis & Squash Association Inc	Central
Maryborough and District Junior Tennis Association	Central
Springsure Tennis Club Inc	Central
Tennis Rockhampton Ltd	Central
Caboolture & District Lawn Tennis Association Inc	Sunshine Coast
Kandanga Tennis Club Inc	Sunshine Coast
Mapleton Tennis Club Inc	Sunshine Coast



Yandina Tennis Club purchased new signage with their grant



Maryborough and District Junior Tennis Association's new BBQ, purchased with their grant

CLUB	REGION
Noosa District Tennis Association	Sunshine Coast
Palmwoods Tennis Club Inc	Sunshine Coast
Tin Can Bay Tennis Club	Sunshine Coast
Yandina Tennis Club Inc	Sunshine Coast
Ipswich District Junior Tennis Association Inc	Metro
Queensland Community Lawn Tennis Association (QCLTA)	Metro
Return Serve Inc	Metro
Mudgeeraba Tennis Club	Gold Coast
Pimpama Island Sports Association	Gold Coast
St George Tennis Club	South
Taroom Tennis Club Inc	South

## Club Grants

A pool of \$10,000 in membership grants was also awarded to three clubs at the Tennis Queensland President's Morning Tea, held during Brisbane International 2015. Grant recipients were chosen at random in a draw where entries were based on the level of growth each club had in player registrations year on year. Clubs were able to put the funding towards facility improvements or initiatives that would increase club participation and membership.

Congratulations to the 2015 recipients, listed in the following table:

CLUB	REGION
Gold Coast Albert Junior Tennis Club	Gold Coast
Fraser Coast Tennis	Central
Mudgeeraba Tennis Club	Gold Coast

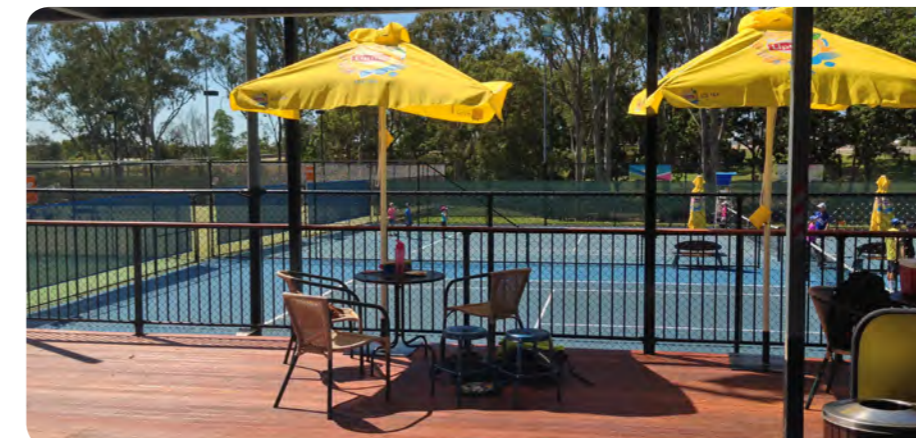
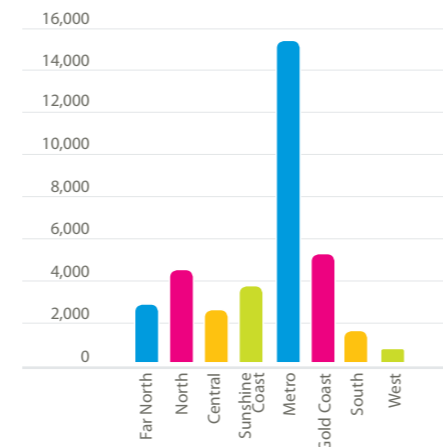
## Affiliated clubs, centres & associations

Region	Affiliates as of 30 Jun 2015
Far North	22
North	17
Central	31
Sunshine Coast	48
Metro	66
Gold Coast	27
South	25
West	9
<b>TOTAL</b>	<b>245</b>

20% growth in Registered Players from 2013-14

35k individuals joined as Registered players

## Registered Players per Region



## IN FOCUS:

Mudgeeraba Tennis Club on the Gold Coast received almost \$4,000 in grants from Tennis Queensland during 2014-15. The club used this funding to finish off a viewing deck and to purchase and install a PA system. These new editions have made a massive difference to the club, providing a place for families to watch their children play and somewhere for players to socialise.



# PROGRAMS TENNIS IN QUEENSLAND

## ANZ Tennis Hot Shots

ANZ Tennis Hot Shots (ANZTHS), the national development program for primary school-aged children introduced more than 50,000 children in Queensland to tennis during 2014-15.

Using smaller courts, smaller racquets and low-compression balls, ANZTHS make learning tennis fun and easy for children as it enables them to start rallying right from their first lesson.

ANZTHS incorporates avenues for clubs, schools and coaches to engage primary school-aged children in tennis. Almost 30,000 children became registered ANZTHS participants during 2014-15.

### In the Community

Sixteen new coaches became qualified ANZTHS Deliverers during the year, taking the total number of deliverers to 179. Additionally, 96 clubs offered Community Play programs at their facilities. This program provides opportunities for kids to try tennis in a club environment and an opportunity for players at clubs who do not have a qualified coach to participate in the ANZTHS program.

### In Schools

During 2014-15 207 primary schools signed up to the National Schools Partnership Program (NSPP) and the program provided more than 10,000 kids the opportunity to experience tennis and develop skills.

**30,375**  
REGISTERED ANZ TENNIS  
HOT SHOTS PARTICIPANTS  
IN QUEENSLAND



## Cardio Tennis

Cardio Tennis offers a fun and energising 60-minute workout that increases hand-eye coordination, tennis skills and fitness levels. During 2014-15, 80 Cardio Tennis Deliverers offered the program to 2,514 registered participants in Queensland.

Of the registered participants, 56% were female and used Cardio Tennis as an avenue to play socially and get back into the sport.

### In Schools

Following the success of the primary school NSPP program, the Tennis in Secondary Schools Program was launched. Designed with years 7-10 in mind the program is based on the 'learning through play' philosophy. Nineteen Queensland secondary schools participated in the program during 2014-15.

## Regional Programs

### Indigenous

More than 6,000 indigenous players across Queensland were provided with an introduction to tennis during 2014-15.

Highlights included:

- 16 athletes from Toowoomba & Bundaberg's PCYC Indigenous Program participated in an on-court showcase at the Brisbane International
- Cherbourg State School received \$5,000 to implement an ANZ Tennis Hot Shots program. Ian Goolagong visited the school and provided a Tennis in Schools experience for more than 150 students.

**226**  
SCHOOLS REGISTERED TO  
THE NATIONAL PROGRAM

## Programs for Athletes with a Disability

### Wheelchair

The 2015 Queensland Wheelchair Open was once again integrated into the Brisbane International presented by Suncorp. Thirty-eight players travelled from across Australia and the world to participate in the prestigious event.

In the Men's Singles main draw final Evans Maripa (RSA) defeated Takashi Sanada (JPN) 1-6, 6-3, 7-6(5).

The Women's Singles main draw saw Kgothatso Montjane (RSA) defeat Lucy Shuker (GBR) 7-6(4), 6-2.

The 2015 event also saw the revival of the Quad event. Dylan Alcott (AUS) defeated Jamie Burdekin (GBR) 2-6 6-2 6-0 to take out the Quad Singles title.

### Intellectual Disability

Tennis Queensland continues to integrate programs for players with an intellectual disability. Queensland's top three players, Archie Graham, Mitchell James and Joshua Holloway attended the Queensland National Academy facilities for a day. The players, and their coaches participated in an on-court session with National Academy Manager Chris Mahoney. The players were provided feedback and suggestions for further development.

Five of the states leading and developing players were involved in a 'live like a player' experience during the Brisbane International. The day included match play on Pat Rafter Arena, mock press conference, a behind the scenes tour and a meet and greet with Grigor Dimitrov.

## The GREAT TENNIS-TACULAR

To celebrate the Summer of Tennis, a road show of tennis activations was conducted from September to November 2014. Representatives from Tennis and local tennis clubs visited towns around Queensland to offer free tennis, fun activities, plenty of prizes and opportunities to meet local ambassadors and personalities.

The road show, known as The Great TENNIS-TACULAR visited Brisbane, Ipswich, Gold Coast, Sunshine Coast, Toowoomba and Hervey Bay, giving over 3,500 locals a chance to pick up a racquet and have a go, and in many cases take the racquet home with them to continue playing through the summer and beyond.

Clubs and coaches who were involved in the events used the opportunity to introduce event-attendees to their offerings and build participation at their club.

The events also offered a great way to promote the Brisbane International and upcoming ATL series to new audiences, boosting awareness of tennis events in regional markets.

Highlights of the events included:

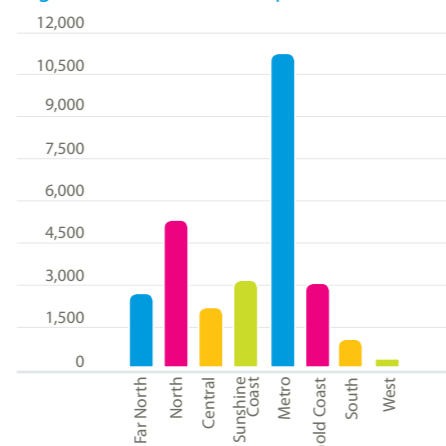
- Strong media coverage at all regional events, including TV, newspaper, radio and online features
- Mass ANZ Tennis Hot Shots demonstration at Robelle Domain (Ipswich) providing 30 kids at once with an introduction to tennis
- Trophy visits to local hot-spots such as museums, airports and cafes to broaden awareness of the tour
- Visits from Grand Slam doubles finalist Paul Hanley, local mayor & councillors and local personalities at Hervey Bay event giving young kids aspiration to keep playing and improving.



## Community Play Venues

Region	No.
Far North	7
North	6
Central	11
Sunshine Coast	15
Metro	30
Gold Coast	9
South	13
West	5
<b>TOTAL</b>	<b>96</b>

## Registered ANZTHS Participants



## Registered Cardio Tennis Participants

Region	No.
Far North	116
North	131
Central	58
Sunshine Coast	11
Metro	1,287
Gold Coast	896
South	1
West	3
Other	11
<b>TOTAL</b>	<b>2,514</b>

## IN FOCUS: COACHES

Queensland's 553 registered Tennis Australia Coach Members continue to drive participation and performance. During 2014-15 the following training courses were accessed by coaches:

- Intro/NSPP (69)
- Junior Development Course (61)
- Club Professional Coaching Course (20)
- Other professional development (172)



# FACILITIES MORE WELCOMING & SUSTAINABLE PLACES TO PLAY

Whilst a strong emphasis remains on building new and upgrading facilities, a major priority in today's challenging funding environment is to ensure existing centres are well managed and operated now and into the future.

Where requested, the Places to Play team met with affiliates to review their existing range of tennis programs, court utilisation, business arrangements and practices to see where improvements could be made or additional services offered to enhance their business.

During 2014-15, 87 Club Health Checks (CHC'S) were completed by affiliates, 27 more than the previous year. These checks allow affiliates to benchmark themselves against similarly sized and located facilities throughout Australia and identify the areas of their operations that were either performing well or required improvement compared to peer averages.

From this process 11 affiliates had their existing facility management models reviewed and assistance provided to update or improve them, with another four reviews still underway. Six of these reviews included the development of new or replacement agreements between affiliates and their appointed coaching provider or centre manager.

**211**  
NEW AND UPGRADED  
COURTS

**\$9.1M**  
SPENT ON NEW AND  
UPGRADED TENNIS FACILITIES

## New Facilities and Upgrades

There were 181 courts upgraded and 31 new courts built across the state in 2014-15. Significant new and upgraded tennis facility projects completed during the year included:

CLUB/CENTRE/ASSOCIATION	PROJECT
Sunshine Coast Regional Tennis Centre	9 new courts
Roy Emerson Tennis Centre	6 new courts, 2 new Hot Shots courts, new clubhouse and parklands
University Queensland Tennis Centre	converted lighting to all 21 courts to LED, 3 new Hot Shots courts
Shaw Park Tennis Centre	10 upgraded courts
Gold Coast Alrbert Junior Tennis Club	clubhouse extensions and renovations
Sandgate District Youth Tennis Association	2 new courts, 2 upgraded courts
Landsborough Tennis Club	2 rebuilt courts, 2 upgraded courts
St Paul's College	6 upgraded courts
Brisbane Boy's College	5 upgraded courts
The Southport School	5 upgraded courts
Whites Hill State College	4 upgraded courts
Mackay District Tennis Association	4 upgraded courts
Barcaldine District Lawn Tennis Association	5 upgraded courts, 3 new Hot Shots courts
Trinity Beach Tennis Club	4 new Hot Shots courts

# TENNIS QUEENSLAND COURT TECH

Sports Minister  
Steve Dickson opened  
four new Hot Shots  
mini courts at Trinity  
Beach Tennis Club



Court Tech is a registered business within Tennis Queensland that offers a wide range of facilities development advisory and professional consultancy services. This can range from answering simple questions such as clarifying court dimensions and surfacing options through to more technical matters such as lighting design and base construction specifications.

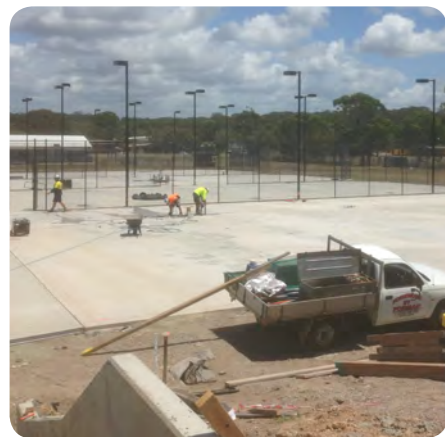
In 2014-15 Tennis Queensland - Court Tech consultancy services were provided on a number of club/centre projects involving both new tennis courts and facilities as well as the upgrading of existing courts.

Consultancies secured included:

- Technical advice provided to Brisbane City Council's new Roy Emerson Tennis Centre
- Project management services for the development of 10 new courts at Gold Coast Seniors and Miami Tennis Club
- Project management services for the reconstruction and upgrading of four courts at Landsborough Tennis Club
- Project management services to upgrade three courts at Palmwoods Tennis Club
- Project management services to upgrade two courts at Tin Can Bay Tennis Club
- Project management services for the development of four Hot Shots mini courts at Trinity Beach Tennis Club
- Project management services for the development of three Hot Shots mini courts at UQ Sports Tennis Centre

The Department of Education included Court Tech on a select tender list of quality court builders. A number of project management services were provided to upgrade or reconstruct courts at schools including:

- Project management services to upgrade four courts at Whites Hill State College
- Project management services to reconstruct and upgrade two courts at Mitchelton State School
- Project management services to reconstruct two courts at Moggill State School
- Project management services to upgrade five courts at The Southport School
- Project management services to upgrade two courts at Merrimac State School



Nine new courts were constructed at the Sunshine Coast Regional Tennis Centre



The Roy Emerson Tennis Centre (Milton), officially opened in January 2015



University of Queensland installed LED lighting to all 21 courts at their centre



Shaw Park Tennis Centre's upgraded 10 courts



Whites Hill State College college before and after upgrades





# FACILITIES

## STATE & REGIONAL TENNIS CENTRES



Brisbane Girls Grammar School and Brisbane State High School held their high school graduation ceremonies at the Queensland Tennis Centre in November 2014. Both events attracted around 4,000 patrons to the centre.

### State Tennis Centre

*Tennis operator: MWS Sports*

Since taking over the management of this facility in April 2014, MWS Sports have significantly increased participation numbers through a variety of coaching programs, fixture competitions, organised social play, tournaments and general court hire.

They have also redesigned the Pro Shop and Café areas as well as engaging a new caterer for the café.

In addition to the Brisbane International the Queensland Tennis Centre also hosted some major events including the North Conference Asia-Pacific Tennis League finals and high school graduation ceremonies for Brisbane Girls Grammar School and Brisbane State High School which each attracted around 4,000 patrons.

### Regional Facilities

Our Facilities Development Strategy identifies the location of 15 key Regional Tennis Centres in Queensland, of which eight have already been developed and others in various stages of planning.

Discussions are continuing with Gold Coast, Logan, Redlands, Moreton Bay, Hervey Bay, Bundaberg, Mackay and Maranoa (Roma) councils to progress the planned development of new or upgraded Regional Tennis Centres.

#### Cairns International Tennis Centre

*Tennis operator: Tennis Queensland*

Tennis Queensland took over the management of the tennis operations at the centre in April. After some minor repairs and a significant clean-up of the facility, participation numbers are back on the rise again.

The other major tenant in this facility operates a Chinese restaurant on the upper level of the building. They continue to run a popular business at the centre.

#### Townsville Regional Tennis Centre – Kalynda Chase

*Tennis operator: Tennis Blast (Tim Robinson)*

Tennis Blast have gone from strength to strength during the past 12 months. Coaching numbers are very strong and have increased by 400% since commencement in January 2014. The centre has expanded their tennis offerings with the addition of Cardio Tennis, weekly fixture competitions for adults and juniors, well organised social tennis sessions and a successful tournaments program. The centre continued to sponsor a franchise in the North Tennis League (NTL). The Kalynda Chase Cavaliers won the inaugural competition in 2014 and defended their title winning the NTL again in 2015.

#### Rockhampton Regional Tennis Centre – Victoria Park

*Tennis operator: Tennis Rockhampton Ltd*

This facility has had a challenging 12 months with the transition to a new Head Coach and Centre Manager combination. New Head Coach (David Glinster) and Manager (Sonia Glinster) have settled-in well since starting in early 2015.

Participation numbers in the coaching programs and fixture competitions have been steadily increasing. A number of significant tournaments and events continue to be held at this facility every year, including the Head QLD State Age, The Rockhampton Open, Queensland Secondary Schools Cup, a Junior Development Series event and the Queensland Junior Development Series State Finals.

#### Mt Isa Regional Tennis Centre

*Tennis operator: Copper City Tennis Club*

This Regional Tennis Centre in Mt Isa continues to be managed by the Copper City Tennis Club who have a long term lease with the Mt Isa City Council.

The club is being run successfully by a group of club volunteers and supported by a professional coaching program based at the facility. At the end of 2014, the club's appointed coach relocated but a local resident has taken up the challenge of this position and is currently working to obtain their Tennis Australia coaching accreditation.

#### Sunshine Coast Regional Tennis Centre

*Tennis operator: Caloundra Tennis Association*

The expansion of this existing facility with the construction of nine new courts is the first of three stages of works to complete this Regional Tennis Centre. The facility has already hosted a few minor tournaments since the new courts were completed in early 2015.

The Caloundra Tennis Association have a lease over this facility from the Sunshine Coast Regional Council and an agreement in place with Elite Tennis International as their Centre Manager.

#### George Alder Regional Tennis Centre – Ipswich

*Tennis operator: Top Tennis Academy*

Top Tennis Academy took over the management of the facility part way through the previous term, however their management rights expired during 2014-15. Council advertised for a new manager and following the tender process Top Tennis Academy continued in the role.

There are plans for the hit-up wall to be extended to make another full sized court, two of the clay courts at this facility to be converted to acrylic surfaced courts and the development of a number of Hot Shots mini courts on this site to enhance their grassroots tennis programs.

#### Toowoomba Regional Tennis Centre – USQ

*Tennis operator: BG Tennis (Gavin Wright & Breanna Tilley)*

The centre once again conducted a very successful Pro Tour event that was adjudged the Queensland Tournament of the Year for 2014 it also went on to win the Most Outstanding Professional Tournament at the Australian Tennis Awards.



## IN FOCUS: SUNSHINE COAST

The first stage of works at the Sunshine Coast Regional Tennis Centre saw nine new courts constructed at the existing Caloundra Tennis Association facility in early 2015.

Future development stages will see the existing courts upgraded and the construction of a new clubhouse and associated car parking areas.



# MARKETING & MEDIA HIGHLIGHTS

## Connecting with Tennis

Tennis fans are showing a growing interest in connecting with the sport online via social media channels. Throughout the year we saw a dramatic growth in this space with a 50% average increase in fans across Facebook, Twitter and Instagram accounts.

Our social strategy was to share interesting content that ranged from results of our players abroad through to local human-interest stories. Facebook was given the most focus, however both Instagram and YouTube are growing in popularity as consumers show a preference for photo and video content over traditional text.

To support and extend on the content we share on social media, the Tennis Queensland website and Down the Line newsletter were used to provide our online

audiences with extensive news stories and further updates from the tennis world. Over 270,000 visited the Tennis Queensland website throughout the year and more than 44,000 newsletter subscribers jumped online to access this information.

To enhance the experience of these online fans, initial works have been conducted to revamp the Tennis Queensland website, creating a site that is responsive to mobile use and more engaging for the individual user.

The Brisbane International and additional Summer of Tennis events bolstered online traffic providing the peak of engagement for the year. During the month of January, the website recorded 24,848 hits, 37% higher than the monthly average.

**44K**  
PEOPLE SUBSCRIBED TO  
TENNIS QUEENSLAND'S  
DOWN THE LINE  
NEWSLETTER

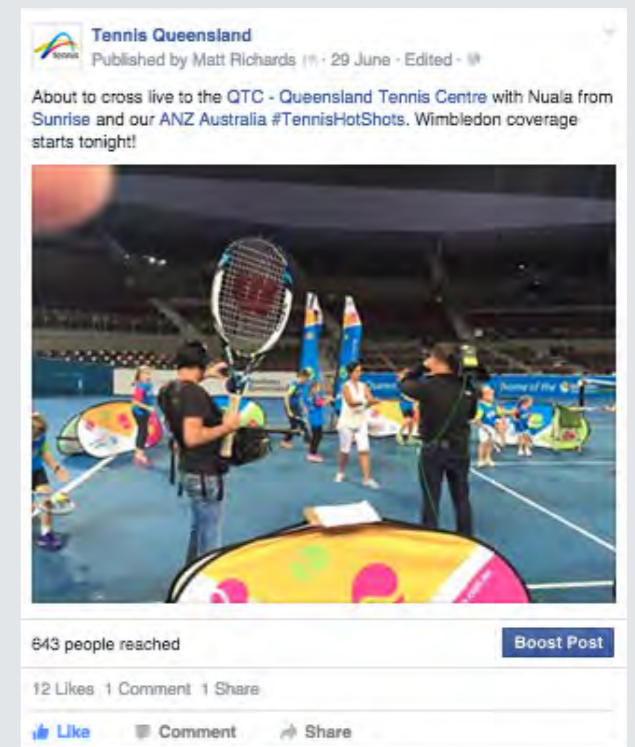
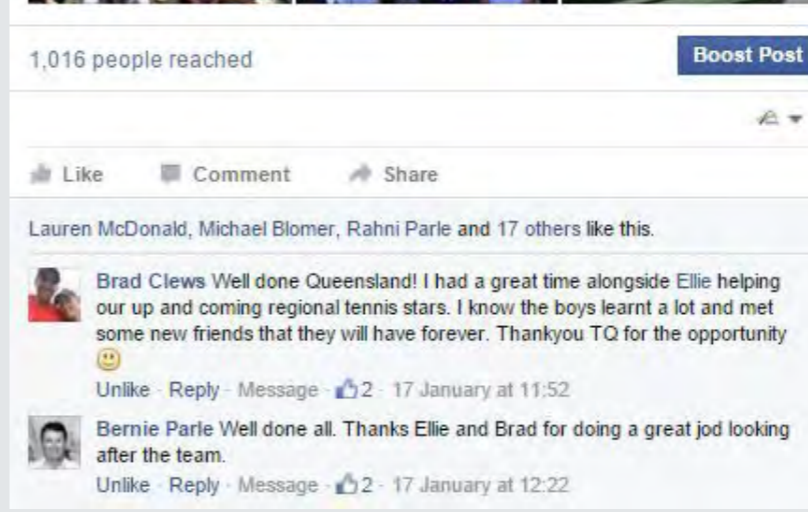
**270K**  
PEOPLE VISITED  
TENNIS.COM.AU/QLD



**f**  
**1,505**  
Facebook  
followers

**t**  
**877**  
Twitter  
followers

**i**  
**201**  
Instagram  
followers





# MARKETING & MEDIA HIGHLIGHTS

## CASEY BOASTS IDEAL GENE HOOLE

LEO SCHLINK

LONG before Michael Chang, Monica Seles and Richard Krajicek became Grand Slam champions, an ambitious boy stood alongside the trio, equally immersed in anonymity.

The setting was Orlando, Florida, and for 12-year-old Sydneysider Todd Woodbridge in 1983, a tennis journey was only just beginning.

Woodbridge would finish his career as an Olympic gold medalist, record-breaking doubles star and a Wimbledon singles semi-finalist.

Thirty-two years ago, those achievements would have seemed almost unfathomable on the young Sydneysider's first trip abroad.

"The great thing about that event was that I got to see the

peers I would play alongside and sometimes against throughout my career," Woodbridge said.

The event Woodbridge refers to is the Longines Future Tennis Aces tournament, to be played in Paris from May 28.

Brisbane's Casey Hoole, 12, will attempt to follow in illustrious footsteps when he tests his game against 15 rivals in a three-day tournament in the shadows of the Eiffel Tower.

At stake is a three-year Longines scholarship to cover coaching and travel costs.

The son of a coach and nephew of former touring pro Scott and Mark Draper, Hoole boasts a pedigree steeped in tennis.

Woodbridge believes the influence of Hoole's parents, Matt and Sharon, plus his uncles will help significantly.



JUNIOR ACE: Brisbane's Casey Hoole. Picture: Renae Droop

## Stosur's Open build-up on track

SAMANTHA Stosur has opened her ninth campaign at the Family Circle Cup with a comfortable victory as she builds towards next month's French Open.

Stosur, 31, enjoyed a straight-sets defeat of Bulgaria's Sesil Karantcheva 6-2, 6-4 at the WTA claycourt tournament in South Carolina, though countrywoman Casey Dellacqua suffered a setback with a first-round loss.

Dellacqua, 30, was swept aside by Swiss 21st seed Belinda Bencic 6-1, 6-2 in a disappointing display.

Stosur, the 2010 Family Circle Cup winner, said the tournament was a highlight of her calendar.

"It's certainly one of if not my favourite week of the year to be out on tour," she said after the win.

Stosur, who is known for her mental battles on the court, also reflected on how she strongly considered retiring last year.

The 2011 US Open champion and former world No.4 endured a frustrating 2014 campaign marred by losses to finish outside the top 20 for the first time in six years.

"A year ago I really was struggling. I wasn't happy with the way I was playing," Stosur said. "I wasn't necessarily enjoying playing, and when you're not getting the results that you necessarily want or believe that you're capable of it gets tiring to be out here all the time."

Stosur will face Spain's Lara Arruabarrena in round two.



HIGHLIGHT: Samantha Stosur.

## Terrific teamwork ensures major event shines

IPSWICH Open players capitalised on the delightful weather to produce some exciting tennis at the George Alder Centre last weekend.

It was an impressive sight when the players turned up at the courts at 7.30am for the first of the scheduled matches on Saturday.

That was in sharp contrast to the previous weekend when the courts were flooded with water and play was out of the question.

Lots of work had been put in during the week to have courts ready for play.



Ipswich Open men's singles winner Brendan Moore with his Ipswich Trophy Centre perpetual trophy.

### IPSWICH OPEN REVIEW

Thanks to Leon Gilnster and his team who made the courts available for play.

The players were very complimentary. They enjoy playing on the clay and as this is the only large multi-clay court centre, the experience is invaluable.

Sincere thanks to the Ipswich City Council, Bendigo Bank, Hoopers Carpet One, Fred Daniel Tennis, Tecnifibre, Ipswich Trophy Centre, Tennis Queensland and Joma Sport for their sponsorship and Tandeme E Tandeme and Charlie Pisasale's office for the entry forms and printing.

Special thanks to the Junior association for their courts, Ipswich Grammar School for use of their Brassall facility and the canteen ladies at both centres for the rushed usage on the first weekend.

### Fine efforts

SOME regional players fared well with local coach Mitch Garen and his partner Mick Sherry taking out the special men's doubles.

Justin Rowe was runner-up in the 18 singles to Brendan Goldsmith and Danny Rowe was the victor

in the A-grade singles from former Tall Gums player Jordan Black.

The winner of the racquet, donated by Tecnifibre, was drawn from all the Juniors who entered and played in the closed events.

A very excited winner Kaito Nelson was quick to return to the courts to collect his prize.

Lizette Cabrera capped off an extremely good win in the women's open singles with victory in the open mixed doubles.

Cabrera was partnered by Ben Dolan, who defeated Toowoomba stalwart and Xtreme coach Chris O'Mara and his Brisbane partner Ivana Marinov.

This match was the last to be completed on Sunday evening, finishing under lights at 7pm.

Runner-up to Cabrera in the women's open was Kaylah McPhee.

McPhee then teamed with Michaela Haet to win the open women's doubles in straight sets from Ivana Marinov and Amber Molloy.

All results are on the tennis website.

Tennis Australia now adjusts rankings following the Ipswich Open where points are allocated according to their



Talley-Kate Beaver (with her Lisa Orford Memorial Trophy) presented by tournament director Ross Orford.

performance. This tournament has gold points allocated for open events and silver points for 18 and under events.

The committee wishes to thank the Rosewood Lions for their assistance again this year. This was the 11th year the service group has assisted us with court maintenance during the event and their help is greatly appreciated.

- Jill Franklin



## The sky's the limit for Harry

AS A BOY, Harry Woodbridge was a tennis prodigy. He was the youngest player to win the Australian Open Junior Championships since Ken Rosewall and John Newcombe.

## Charity day out to give disease a serve

AUSTRALIA Tennis Academy is looking to the Gold Coast business community to help raise vital funds to support research into motor neurone disease.

The Brad Drewett Tennis Pro-Am Charity Day will be staged at Hope Island on March 22 and many of the sport's greats have lined up to support the event.

Its namesake, tennis legend Brad Drewett, died of the condition in 2013.

At 17 he was the youngest player to win the Australian Open Junior Championships since Ken Rosewall and John Newcombe.

Drewett was a member of Australia's Davis Cup team in the 1980s and went on to become an administrator and then executive chairman and president The Association of Tennis Professionals, the governing body of men's professional tennis worldwide.

Australia Tennis Academy director Noel Callaghan said the charity day was open to the public and his organisation was looking for businesses to sponsor amateur players.

Mr Callaghan, a coach, business partner and long-time friend of Drewett's, said Ken Rosewall, Mal Anderson and Bill Bowrey have committed to the event for spectators and players including a Who's Who line-up.

Signed up are Davis Cup stars John Alexander, Wally Masur, Sandon Stolle, Peter Doolan and Bob Gilman along with world high ranking players Jahan Anderson and Michael Tebbutt.

Joining them will be Queensland Davis Cup stars, Geoff Masters, Mark Kratzmann, Scott Draper and John Frawley.

Representing the ladies will be former World No.2 Lesley Bowrey who sat only behind Margaret Court, and ATA is awaiting confirmation

from Evonne Gostagow Cawley and also South Australia's John Fitzgerald.

Fitting up with tennis greats will be 16 amateurs who are paying to help raise funds.

Among them will be 14-year-old Celine Southern, who is sponsored by her grandmother and has an uncle in Germany who is stricken by motor neurone disease.

Celine, an aspiring Pro, is seventh in Queensland rankings for her age group and 223 on the nation's women's rankings list.

Those wishing to play or sponsor an amateur can contact Mr Callaghan on 0411 224 002.



Celine Southern with her tennis coach Noel Callaghan.

## Tennis centre's revamp is ace



NEWLY OPENED: An aerial shot of the Sunshine Coast Regional Tennis Centre

PHOTO: CONTRIBUTED

THE Sunshine Coast Regional Tennis Centre at Caloundra officially opened on Saturday, March 21.

Division 2 councillor Tim Dwyer said the centre was opened by Member for Fisher Mal Brough.

"The centre, which was delivered by Sunshine Coast Council, designed by Brand and Slater Architects, and built by Murphy Builders Queensland, is one of only seven regional tennis facilities across Queensland endorsed by Tennis Australia and Tennis Queensland," he said.

"The facility includes nine new plexipave courts, including a full show court, which allows it to cater for regional, state, national and international events, making it a catalyst for economic development, social inclusion and community wellbeing.

"In addition to the new courts, additional infrastructure includes lighting, fencing, shelters, pathways, disabled access, landscaping and car parks.

"The new facilities link into the existing courts and clubhouse, creating a truly

regional centre for the Sunshine Coast and beyond."

"A range of junior and senior high-level tennis events will be attracted to the newly-completed regional tennis centre.

"In addition to council's contribution, a \$773,000 grant from the Australian government's Regional Development Australia Fund, along with contributions from Tennis Australia and Tennis Queensland were used to construct the \$2.6 million facility," he said.

## Teenager aces silverware

TENNIS

Trent Slatter

trent.slatter@thechronicle.com.au

BRISBANE teenager Lizette Cabrera fought back from a set down to defeat top seed Isabella Holland 3-6 6-2 6-0 in yesterday's women's Silver Cup final at the James St Tennis Centre.

Holland, the 2013 Easter champion, had the better of a tough opening set before Cabrera responded in kind to take the match to a third.

Despite giving up plenty of experience to her opponent, No.2 seed Cabrera held her composure to blitz through the deciding set.

Holland kept fighting and saved three match points before Cabrera finally broke her on the fourth chance to seal the title.

The 17-year-old admitted she didn't play her best and had to quell her frustration after dropping the first set.

"I lost the first set 6-3 and I was getting a bit angry," Cabrera said. "Towards the end, I just knuckled down and had a good attitude and it worked out well."

"It was pretty good not giving her a game (in the third set). I'm happy with the win."

Cabrera was a semi-finalist in the Easter Silver Cup last year so she was delighted to go all the way this time as she targets more competition overseas.



NICE SERVE: Lizette Cabrera was victorious in the Easter Silver Cup final. PHOTO: BEV LACEY

"This is my second time. I played here last year and made the semis so it was good to come back and win it," she said.

"I've got a big training block coming up and then I'll probably head overseas and play some Futures tournaments.

"(The win) is good for my confidence and also good for getting some pocket money and travel expenses."

**Lizette Cabrera:** I just knuckled down and had a good attitude and it worked out well.



# BRISBANE INTERNATIONAL

## THE PINNACLE EVENT



"It feels very different to any other match I've ever won, because I never thought about anything, reaching 500 or 800. All those numbers didn't mean anything to me, but for some reason 1,000 means a lot because it's such a huge number."

Almost 100,000 fans enjoyed eight days of action at the seventh edition of the Brisbane International, from an all-star-cast of the world's top tennis players. Grand Slam champions Roger Federer, Lleyton Hewitt, Maria Sharapova, Ana Ivanovic, Sam Stosur and Victoria Azarenka all commenced their 2015 campaigns at the event.

Top seeds Roger Federer and Maria Sharapova prevailed, taking out the men's and women's singles crowns respectively. Roger Federer's triumph over third seed Milos Raonic marked his 1,000th ATP tour match win, becoming only the third player in the Open era to reach the milestone. To commemorate this achievement Roger was presented with a special memento by Queensland Icon Rod Laver.

World No.2 Maria Sharapova won her maiden Brisbane International crown defeating second seed Ana Ivanovic.

For the first time in the history of the event both Roy Emerson and Evonne Goolagong-Cawley were on hand to present the iconic trophies named in their honour to the 2015 champions.

### 2015 Winners

Men's singles: [1] Roger Federer (SUI) d [3] Milos Raonic (CAN) 6-4 6-7(2) 6-4 Women's singles: [1] Maria Sharapova (RUS) d [2] Ana Ivanovic (SRB) 6-7(4) 6-3 6-3 Men's doubles: Jamie Murray/John Peers (GBR/AUS) d Alexandr Dolgoplov/Kei Nishikori (UKR/JPN) 6-3 7-6(4) Women's doubles: Martina Hingis/Sabine Lisicki (SUI/GER) d Caroline Garcia/Katarina Srebotnik (FRA/SLO) 6-2 7-5

### Media Coverage

The Brisbane International Facebook page grew to 48,993 likes and a weekly reach of 2.4 million during the tournament. The most engaging Facebook post was Roger Federer's Round 2 result against local hero John Millman, which reached more than 200,000 people and accrued more than 2,000 likes.

On Twitter, @brisbanetennis grew to 19,467 followers. Tweets were viewed by more than four million followers, with the hashtags #BrisbaneTennis, #BrisbaneInternational and #Roger1000 trending worldwide. The most re-tweeted post of the tournament was 'Congratulations @rogerfederer! #Roger1000 #BrisbaneTennis', which was retweeted 760 times and attracted 750 favourites.



Elina Svitolina on court with local Hot Shots participants



Women's Singles winner Maria Sharapova and runner up Ana Ivanovic

Vision of press conferences, match highlights, practice sessions and more were uploaded to the tournament's official YouTube channel, which attracted more than 600,000 views during the tournament period. The most watched video – Roger Federer v Milos Raonic highlights (final) – was viewed more than 121,000 times, with the channel accruing more than 1,000 new subscribers within the week.

More than 100 print, radio, local television and photographic media provided detailed coverage of the event to news outlets worldwide. The event coverage for television was produced by Tennis Australia for the first time with Channel 7 broadcasting matches on 7Two. The final was shown on 7 in prime time for the first time.

### Integrating the tennis family

Commonly recognised as the largest international tennis event in the country, outside the Australian Open, the Brisbane International is a truly world-class event sanctioned by the ATP and WTA. In addition to the main drawcard singles events, the Brisbane International also hosts ATP & WTA doubles, an ITF Sanctioned International Wheelchair Event, Queensland Money Race Finals and the Brisbane International Schools Challenge state finals.

Local ANZ Tennis Hot Shots, Cardio Tennis and players with an intellectual disability were also given the opportunity to play on centre court in front of capacity crowds and treated to exclusive meet-and-greets with main draw players.

### Conferences and Workshops

A variety of Tennis stakeholders were also invited to participate in a number of networking and professional development opportunities held on site during the Brisbane International. Highlights included:

- More than 200 representatives from 100 affiliates as far away as Innisfail, Cairns, Mackay, Longreach and Chinchilla attended the annual President's Morning Tea
- Affiliates were invited to learn about ways to grow and sustain their club at the Club Master Class
- More than 100 coaches attended the Queensland Coaches Conference with Roger Rasheed and Wayne Bennett as guest speakers
- Physical Education teachers from the National Schools Partnership Program participated in a forum and on-court professional development workshop.



Roger Rasheed, guest speaker at the Queensland Coaches Conference

**97k**  
FANS ATTENDED  
THE EVENT

**650+**  
VOLUNTEERS & OFFICIALS  
ARE PART OF THE BI FAMILY

**42**  
TOTAL COMBINED GRAND  
SLAM TITLES HELD BY  
PLAYERS IN THE 2015  
FIELD, THE GREATEST  
EVER LINE UP

**60**  
GLOBAL BROADCASTERS  
BEAMED THE EVENT IN  
MORE THAN 175  
COUNTRIES WORLD-WIDE

**4m**  
FOLLOWERS VIEWED  
TWEETS FROM  
@BRISBANETENNIS

**\$49k**  
TREASURY CASINO &  
HOTEL DONATED TO  
RONALD MCDONALD  
HOUSE THROUGH 'ACES  
FOR HEARTS' PROGRAM



# TOURNAMENTS & LEAGUES HIGHLIGHTS

## 7,014

PLAYERS REGISTERED TO PLAY IN TENNIS COMPETITIONS

## 222

SANCTIONED TOURNAMENTS WERE OFFERED FOR ASPIRING ATHLETES

## \$209K

PRIZEMONEY AVAILABLE FOR QUEENSLAND MONEY RACE EVENTS

### Tournaments

#### Rod Laver QLD Junior Championships presented by Tennis & Gear Online

A record total of 1,178 players competed in the 2014 Rod Laver Qld Junior Championships presented by Tennis & Gear Online. The event is the biggest Junior Tour event in Australia and attracted players from 12 international countries.

Six venues across greater Brisbane totaling 77 courts were utilised across the nine days. More than 500 people attended the finals at the Queensland Tennis Centre. Presentations to singles winners and runner ups were made by Tennis Queensland Board Members Ken Laffey (President) and Mark Bloomfield, Tennis Australia Board Member Chris Freeman, Tournaments Committee Chairperson Murray Whitbread and top 100 ATP Players James Duckworth and John Millman.



John Millman with Rod Laver Qld Junior Championships players

#### Medibank Junior Development Series

The Medibank Junior Development Series continues to provide an introductory competitive opportunity at a local level. Eight regions select a team across the year to take part in the state finals, which is held annually in Rockhampton. The number of events has remained quite stable across the strategic plan period. Entries have increased year on year with over 6,000 participants now playing in the series annually.

Medibank's national sponsorship of the series came to an end in June 2015 with the company not renewing their sponsorship.

#### Head Queensland State Age

The Head Queensland State Age was held in Rockhampton during the 2014 September school holidays. The popular event attracted 300 participants with matches played at the Rockhampton Regional Tennis Centre and Yeppoon. Unfortunately the tournament was heavily affected by inclement weather with the tournament abandoned on the final day.

#### Queensland Junior Teams Carnival presented by Tennis & Gear Online

The Queensland Junior Teams Carnival was held across five venues in Brisbane from 13-17 December 2014. The event attracted representative teams from all over Queensland and interstate teams from New South Wales, Northern Territory and South Australia.

Metropolitan North were crowned overall champions with Northern Territory finishing in second position.

#### Queensland Money Race

Forty leading Australian players earned a place at the Queensland Money Race Finals held from 9-11 January during the Brisbane International. The event offered an additional \$16,000 prize money to athletes who had won the most prize money from Queensland AMT events in 2014.

Kaden Hensel and Zuzana Zlochova were crowned as champions taking home \$3,200 each after defeating Gavin van Peperzeel and Isabella Holland in their respective finals.

#### Queensland Open

Approximately 200 players entered the 2015 Queensland Open with \$16,000 in prize money on offer for participants in open, wheelchair and intellectual disability events.

Robert Smeets (Brisbane) and Abigail Tere-Apisah (Papua New Guinea) were crowned champions in the open events.



Queensland Open Women's Singles Winner, Abigail Tere-Apisah with Tennis Queensland President, Mark Bloomfield

#### Hutchinson Builders Toowoomba International

The 2014 Hutchinson Builders Toowoomba International was played from 11-18 October at the Toowoomba Regional Tennis Centre. The event featured rising Australian players Luke Saville, Ben Mitchell, Jordan Thompson, Omar Jasika, Isabella Holland and Sally Peers.

A corporate challenge was played on the final Friday night. Local businesses in Toowoomba rallied behind the concept with 32 teams taking part. In total the corporate teams raised just over \$15,000 for the official tournament charity partner, RACQ Careflight.

The event also featured live streaming for the first time with fans able to watch the tournament from all around Australia and the rest of the world.

The tournament was awarded the Most Outstanding Professional Tournament at the Newcombe Medal, Australian Tennis Awards.

#### Cairns Tennis International

The 2014 Cairns Tennis International was played from 3-11 October and attracted players from more than 15 countries.

Players competed for a share of \$30,000 in prize money and valuable ATP/WTA ranking points.

Community events were held throughout the week for school groups to watch the world class tennis and participate in Hot Shots activities on site.



2014 Cairns Tennis International Women's Singles event winner, Ayaka Okuno (JPN)

Queensland Money Race winners Kaden Hensel and Zuzana Zlochova



### Officials

Officials play an important role ensuring the smooth conduct of tournaments and competitions. During 2014-15 Queensland officials assisted with local events right through to international Grand Slam finals.

Highlights from the year included:

- 20 of 32 positions in the Line Umpires final team at the Brisbane International went to Queenslanders
- Simon Cannavan - ATP appointed Chair Umpire during the Brisbane International
- David Best was selected as a Line Umpire for his first Grand Slam final - the Australian Open men's singles final between Novak Djokovic and Andy Murray.

Opportunities were also available to people wanting to become an official or upgrade their current qualifications. Eight courses were held throughout 2014-15, with the number of overall qualified officials from 2014-15 courses listed in the following table:

COURSES	NO. QUALIFIED
Court Supervisors	20
Line Umpires	12
Chair Umpires	3

From July 2015 all Australian accredited officials will become members of Tennis Australia Officiating. This national change will streamline appointments and payments for officials and will also provide access to leading training and professional development programs and other exclusive benefits.



Officials at the Cairns Tennis International



# TOURNAMENTS & LEAGUES HIGHLIGHTS



**IN FOCUS: ASIA-PACIFIC TENNIS LEAGUE**  
 As the ATL grows in popularity, more and more of Australia's top players compete in the league. In 2014 headline names across Queensland team's included Jarmila Gajdosova, Ashleigh Barty, James Duckworth, John Millman, Ben Mitchell, Jason Kubler, Naiktha Bains, Priscilla Hon and Kimberly Birrell.

**Super 10s National Final**  
 Following the completion of the Super 10s Series a Queensland representative team of eight players was selected for the national finals in Melbourne. The event was held in conjunction with the Australian Open and included a presentation from Pat Rafter and Lleyton Hewitt to the participants. The Queensland girl's team finished in first place with the boys losing a tight final to New South Wales.

**Green Ball State Final**  
 Regional qualifying events were contested by 113 schools with 21 schools advancing to the state finals held during the Brisbane International. The winning school was Nudgee Junior College. Teams were presented with their prizes by Sam Groth at a ceremony on Pat Rafter Arena.

**Brisbane International Schools Challenge**  
**Red Ball State Final**  
 Regional qualifying events were contested by 62 schools with six schools advancing to the state finals held during the Brisbane International. The winning school for the second year running was Brookfield State School who were presented their prizes by Ajla Tomljanovic on Pat Rafter Arena.



**Orange Ball State Final**  
 Regional qualifying events were contested by 42 schools with eight schools advancing to the state finals held during the Brisbane International. The winning school for the inaugural state final was St Andrews Anglican College from Noosa.

**\$28k**  
 PRIZE MONEY WON BY QUEENSLAND TEAMS AT THE ASIA-PACIFIC TENNIS LEAGUE PLAYOFFS

**217**  
 SCHOOLS COMPETED IN BRISBANE INTERNATIONAL SCHOOLS CHALLENGE QUALIFYING EVENTS

**35**  
 TEAMS QUALIFIED FOR THE BRISBANE INTERNATIONAL SCHOOLS CHALLENGE STATE FINALS



*Inaugural Brisbane International Orange Ball State Final winners, St Andrews Anglican College (Sunshine Coast)*

## Leagues

**Asia-Pacific Tennis League**  
 The 2014 Asia Pacific Tennis League (ATL) Queensland Conference once again featured six teams from across south east Queensland; the Sunshine Coast Breakers, Tennis Brisbane Chargers, Beenleigh Blaze, Toowoomba Tigers, Tennyson Volt and the Shaw Park Sharks.

The Tennis Brisbane Chargers completed a hat-trick of titles defeating the Shaw Park Sharks in the mens final whilst the Tennyson Volt caused an upset to outclass the previously undefeated Shaw Park Sharks in the women's final.

The Queensland Conference winners secured a place at the ATL Play offs in

Melbourne during the Australian Open. They were joined by the women's Shaw Park Sharks team who received a wildcard into the competition following the withdrawal of the Korean team.

The Tennis Brisbane Chargers entered the ATL Play offs seeded fourth and had a very tough draw taking on defending champions New Zealand in the opening round. They won this encounter 5-1 to progress to the semi finals where they defeated top seeds Royal South Yarra 4-0. In the final, the Chargers were pitted against second seeds, Japan Phoenix. Matches were locked at three all with the Chargers winning by a countback on games 37-35. They took home \$20,000 for their win.

Tennyson Volt won their first round match before losing their semi-final encounter, finishing fourth overall earning \$5,000 prize money. The Shaw Park Sharks finished in fifth position overall taking home a cheque for \$3,500.

**North Tennis League**  
 The league attracted six teams in 2015 with Tennis Townsville Thunder joining 2014 teams Mackay Magic, Burdekin Barras, Wests Magpies, Kalynda Chase Cavaliers and North West Heat. The final was contested between defending champions Kalynda Chase Cavaliers and Tennis Townsville Thunder with the Cavaliers prevailing in front of a bumper crowd at Tennis Townsville.



# TOURNAMENTS & LEAGUES RESULTS

## AUSTRALIAN PRO TOUR - QUEENSLAND

VENUE	EVENT	WINNER	R/U	SCORE	WINNER	R/U	SCORE
-------	-------	--------	-----	-------	--------	-----	-------

### MEN'S

#### 2014 Hutchinson Builders Toowoomba International

Toowoomba	Singles	Jamere JENKINS (USA) (3)	Luke SAVILLE (1) (AUS)	6-3 7-5	Ellen ALLGURIN (SWE) (SE)	Jessica MOORE (AUS) (4)	6-1 6-3
	Doubles	Jarmere JENKINS (USA) / Mitchell KRUEGER (USA) (1)	Jake EAMES (AUS) / Christopher O'CONNELL (AUS) (2)	6-2 6-2	Jessica MOORE (AUS) / Abbie MYERS (AUS) (3)	Lizette CABRERA (AUS) / Priscilla HON (AUS)	6-3 6-3

#### 2014 Cairns Tennis International

Cairns	Singles	Jamere JENKINS (USA) (1)	Omar JASIKA (AUS)	3-6 6-3 6-4	Ayaka OKUNO (JPN)	Ellen ALLGURIN (SWE) (Q)	6-1 7-5
	Doubles	Yuya KIBI (JPN) / Takuto NIKI (JPN)	Brydan KLEIN (GBR) / Dane PROPOGGIA (AUS) (1)	1-6 7-6(2) (10-4)	Jessica MOORE (AUS) / Abbie MYERS (AUS) (3)	Alison BAI (AUS) / Ayana OKUNO (JPN) (2)	6-2 6-2

## ITF JUNIOR EVENTS

VENUE	EVENT	WINNER	R/U	SCORE	WINNER	R/U	SCORE
-------	-------	--------	-----	-------	--------	-----	-------

### MEN'S

#### 2014 Queensland Junior Winter International 1

Burleigh Waters	Singles	Daniel HOBART (AUS) (13)	Yuya ITO (JPN) (1)	7-6(4) 3-6 6-2	Destanee AIAVA (AUS) (1)	Sara TOMIC (AUS) (2)	6-1 3-6 6-3
	Doubles	Cody BRACKENREG (AUS) / Stefan SKADARKA (AUS) (3)	Scott JONES (AUS) / Jack LYTTLE (AUS) (2)	6-2 6-2	Rosie CHENG (NZL) / Sara TOMIC (AUS) (1)	Chloe HULE (AUS) / Petra HULE (AUS) (2)	6-3 6-3

#### 2014 Strive4College Queensland Junior Winter International 2

Kawana	Singles	Yuya ITO (JPN) (1)	Scott JONES (AUS) (2)	7-6(5) 6-3	Sara TOMIC (AUS) (1)	Violet APISAH (AUS) (11)	0-6 6-3 7-6(7)
	Doubles	Dominic BECHARD (AUS) / Yuya ITO (JPN) (4)	Cody BRACKENREG (AUS) / Stefan SKADARKA (AUS) (1)	6-3 6-3	Linda HUANG (AUS) / Katerina VALOS (AUS) (4)	Rosie CHENG (NZL) / Sara TOMIC (AUS) (1)	7-5 0-6 (10-5)



Queensland girls won the Super 10s National Final with the boys finishing runners up

## MAJOR QUEENSLAND TITLES

VENUE	EVENT	WINNER	R/U	SCORE	WINNER	R/U	SCORE
-------	-------	--------	-----	-------	--------	-----	-------

### MEN'S

#### 2015 QLD Money Race Finals

Tennyson	Singles	Kaden HENSEL (3)	Gavin VANE PEPERZEEL (6)	6-4 7-5	Zuzana ZLOCHOVA (1)	Isabella HOLLAND	4-0 Retired
----------	---------	------------------	--------------------------	---------	---------------------	------------------	-------------

#### 2014 Cairns International Tennis Centre Open

Cairns	Singles	Maverick BANES (1)	Gavin VAN PEPERZEEL (2)	7-6(3) 6-7(2) 6-4	Jessica MOORE (3)	Alison BAI (4)	6-4 6-1
	Doubles	Maverick BANES / Gavin VAN PEPERZEEL (1)	Luke HARVEY / Mitchell ROBINS (2)	7-6(4) 6-7(4) (12-10)	Alison BAI/Jessica MOORE (1)	Lizette CABRERA / Priscilla HON (2)	2-6 6-3 (10-4)

#### 2015 Horizon Accounting Toowoomba 85th Easter Gold Cup

Toowoomba	Singles	Benjamin MITCHELL (1)	Gavin VAN PEPERZEEL (2)	6-1 3-6 6-1	Lizette CABRERA (2)	Isabella HOLLAND (1)	3-6 6-2 6-0
	Doubles	Peter TRAMACCHI / Gavin VAN PEPERZEEL (2)	Steven DE WAARD / Scott PUODZIUNAS (1)	6-3 7-6(4)	Lizette CABRERA/ Kaylah MCPHEE (1)	Michaela HAET / Alexandra TAYLOR (2)	7-5 6-3

#### 2015 Shaw Park Open

Shaw Park	Singles	Christopher O'CONNELL (2)	Victor CRIVOI (1)	6-2 6-1	Zuzana ZLOCHOVA (2)	Ashleigh BARTY (1)	6-3 2-6 6-4
	Doubles	Victor CRIVOI / Justyn LEVIN (2)	Darren POLKINGHORNE / Mitchell ROBINS (1)	7-5 6-1	Lizette CABRERA / Alicia SMITH (2)	Andjela DJOKOVIC/Lyann HOANG	6-3 6-2

#### 2015 Queensland Open

Tennyson	Singles	Robert SMEETS (8)	Mitchell ROBINS (7)	6-1 6-2	Abigail TERE-APISAH (8)	Alicia SMITH (7)	6-1 5-7 6-4
	Doubles	Joel LINDNER/ Adam WALTON (16)	Brett HUNTER/ Calum PUTTERGILL (4)	3-6 6-3 (10-6)	Lizette CABRERA/ Alicia SMITH (1)	Petra HULE/Nicole KRAEMER (2)	7-5 6-3



# TOURNAMENTS & LEAGUES RESULTS

## MAJOR QUEENSLAND TITLES (CONTINUED)

VENUE	EVENT	WINNER	R/U	SCORE	WINNER	R/U	SCORE
<b>MEN'S</b>				<b>WOMEN'S</b>			
<i>2014 University Open Tennis Championships</i>							
St Lucia	Singles	Mitchell ROBINS (2)	Robert STIRLING	6-0 6-1	Lizette CABRERA (3)	Ashling SUMNER (2)	4-6 7-5 6-3
	Doubles	Mitchell ROBINS / Nash VOLLENWEIDER (2)	Chris O'MARA / Mitchell THAMS (1)	7-6(4) 6-3	Sarah BROWN / Cassie GRAMLICK (1)	Samantha FRASER / Anna WISHINK	6-2 6-3
<i>2014 Elite Tennis International Open</i>							
Caloundra	Singles	Mitchell ROBINS (6)	Calum PUTTERGILL (3)	6-4 6-2	Ashling SUMNER (1)	Kaylah MCPHEE (2)	6-3 6-2
	Doubles	Thomas FANCUTT / Scott PUODZIUNAS (1)	Andrew CORBITT / Brandon DALY-WALKIN (3)	Defaulted	Kaylah MCPHEE / Ashling SUMNER (1)	Dianne GRIFFITH / Annie DONALDSON	6-0 6-0
<i>2014 Griffith University Open</i>							
Mount Gravatt	Singles	Jack JAEDE (7)	Thomas FANCUTT (5)	7-6(5) 6-3	Lizette CABRERA (3)	Aleksa CVETICANIN (7)	6-4 6-0
	Doubles	Thomas FANCUTT / Scott PUODZIUNAS (2)	Benjamin DOLAN / Brett HUNTER	4-6 6-4 (10-4)	Aleksa CVETICANIN / Daniela KOVACEVIC (1)	Annie DONALDSON / Cassie GRAMLICK	6-2 6-7(4) (13-11)
<i>2015 Sunshine Coast Open Championships</i>							
Kawana	Singles	Luke HARVEY (2)	Brandon DALY-WALKIN (6)	1-6 6-1 6-3	Alicia SMITH (1)	Shan-Ying BARR (5)	6-1 6-0
	Doubles	Steven DE WAARD / Scott PUODZIUNAS (2)	Andrew CORBITT / Brandon DALY-WALKIN (3)	6-3 6-1	Ivana MARINOV / Alicia SMITH (1)	Gabriela MCLAUGHLIN / Lara TUPPER (3)	6-2 6-4
<i>2105 Ipswich Open</i>							
Ipswich	Singles	Brendon MOORE (8)	Calum PUTTERGILL (2)	6-4 6-1	Lizette CABRERA (1)	Kaylah MCPHEE (3)	0-6 6-4 6-3
	Doubles	Scott PUODZIUNAS / Calum PUTTERGILL (1)	Brendon MOORE / Cole SMITH (5)	6-3 6-1	Michaela HAET / Kaylah MCPHEE (1)	Ivana MARINOV / Amber MOLLOY (2)	6-4 6-0



2014 Rod Laver QLD Junior Championships presented by Tennis & Gear Online competitors

## MAJOR QUEENSLAND TITLES (CONTINUED)

VENUE	EVENT	WINNER	R/U	SCORE	WINNER	R/U	SCORE
<b>MEN'S</b>				<b>WOMEN'S</b>			
<i>2015 Tennyson Classic</i>							
Tennyson	Singles	Calum PUTTERGILL (2)	Isaac FROST (7)	6-2 7-6(4)	Kaylah MCPHEE (4)	Alicia SMITH (3)	6-3 7-5
	Doubles	Scott PUODZIUNAS / Calum PUTTERGILL (2)	Daniel BIRAK/Brett HUNTER (7)	3-6 6-3 (10-7)	Alicia SMITH / Ashling SUMNER (1)	Aleksa CVETICANIN / Kaylah MCPHEE (3)	6-4 6-4
<i>2015 Rio Tinto and QAL Gladstone Open Age</i>							
	Singles	Calum PUTTERGILL (1)	Bradley CLEWS (3)	6-2 6-1	Shan-Ying BARR (2)	Gabriela MCLAUGHLIN (1)	5-7 7-5 6-1
	Doubles	Jake ALCHIN / Phillip JANZ	Alex ALEY/Brad JOHNS	6-3 6-2	Taylor DOUGLAS / Naomi MCKENZIE	Karen PEARCE / Emma WESTMAN	6-1 6-4
<i>2014 Rod Laver QLD Junior Championships presented by Tennis &amp; Gear Online</i>							
Tennyson	18/U	Vini GIUFRE (1)	Themi SITZOUKIS (6)	6-1 6-1	Ivana MARINOV (1)	Anna INOKE	6-2 6-1
	16/U	Cody BRACKENREG (1)	Mike VAUGHAN (8)	6-1 6-2	Catherine KRUEGER (1)	Gabriela MCLAUGHLIN (4)	3-6 6-3 6-4
	14/U	Harrison BROWN (1)	Dane SWEENEY (2)	6-2 6-2	Shan-Ying BARR (3)	Olivia GADECKI	4-6 6-2 6-4
	12/U	Nikita VOLONSKI (1)	Stefan MILENKOVIC (2)	6-2 2-6 6-2	Patricia APISAH (1)	Sara NAYAR (2)	6-1 7-5
	10/U	Peter POLITIS (1)	Daniel HAMMOND (7)	6-1 7-6(1)	Jessica-Jade HAYLO (1)	Ellah DUNN (7)	6-4 6-4



# TOURNAMENTS & LEAGUES RESULTS

## REPRESENTATIVE EVENTS

EVENT/AWARD	OVERALL	MEN'S	WOMEN'S
<i>2014 Queensland Medibank Junior Development Series Finals</i>			
The Ken Hick/Murray Whitbread Trophy	Central		
17/U		Nathan COOKE	Brittany ZIPF
15/U		Jayden COURT	Chloe PURKISS
13/U		James CHA	Megan SMITH
11/U		Lathan TREACY	Sophie IDZIKOWSKI
<i>2014 Queensland Junior Team Carnival</i>			
Regional Team Finals Shield	Metropolitan North		
17/U		Benjamin SLADE	Sarah BROWN
15/U		Louis CLARK	Megan SMITH
13/U		Zac LARKE	Naomi MCKENZIE
11/U		Alex RICE	Jessica-Jade HAYLO
<i>2014 QLD State Primary School Championships</i>			
Overall	South Coast		
Team		South Coast	Metropolitan East
Individual		Bryce ROBINSON	Mikayla ZAHIROVIC

## REPRESENTATIVE TEAM EVENTS

EVENT/AWARD	WINNER	QLD OVERALL PLACE	MEN'S	WOMEN'S
<b>QUEENSLAND REPRESENTATIVES</b>				
<i>2014 National Primary School Championships</i>				
Bruce Cup Winner	Victoria	2nd	Casey HOOLE Bryce ROBINSON Philip SEKULIC Tai SACH Haru SONTON Alex RICE William JESSER	Olivia GADECKI Hana KIM Mikayle ZAHIROVIC Lara WALKER Javiera CASTRO Cyan SUN Sierra YAP
<i>2015 National Secondary Schools Championships</i>				
Pizzey Cup Winner:	New South Wales	3rd	Will MAHER (c) Alexander PAVKOVICH Trystan MARTIN Jayden COURT Patrick HARPER Matthew HULME Alex LIRON Nicholas LE PERS	Sarah BROWN (c) Sommer DALLA-BONA Lara TUPPER Lily CLEMENTS-MARKHAM Danielle MORRIS Megan SMITH Tayah CROSS Samantha CAMERON



Defending North Tennis League Champions, Kalynda Chase Cavaliers

## REPRESENTATIVE TEAM EVENTS

EVENT/AWARD	WINNER	QLD OVERALL PLACE	MEN'S	WOMEN'S
<b>QUEENSLAND REPRESENTATIVES</b>				
<i>2015 Foundation Cup</i>				
Foundation Cup Winner (boys)	New South Wales	6th	Matthew RANKIN Seth TRINDER Stanley NYIKA	Tamie CHEW Leacy ARGENT Rahni PARLE
Foundation Cup Winner (girls)	New South Wales	3rd	Ashley WILSON	Amelija SWAFFER-SELFF

## TEAM REPRESENTATIVES

EVENT/AWARD	TEAM	MEN'S	WOMEN'S
<b>LEAGUES</b>			
<i>2014 Brisbane Tennis League</i>			
Overall	Lifetime Tennis		
<i>2014 Asia-Pacific Tennis League</i>			
Overall (men)	Tennis Brisbane Chargers	Maverick BANES	Jamilla GAJDOSOVA
Overall (women)	Bayside Thunder	Gavin VAN PEPERZEEL Robert SMEETS	Isabella HOLLAND Emma HAYMAN
North Conference (men)	Tennis Brisbane Chargers	Joel LINDER	Sophie LETCHER
North Conference (women)	Tennyson Volt		Monika WEJNERT
<i>2015 North Tennis League</i>			
Overall	Kalynda Chase Cavaliers	Isaac FROST James ROGERS Ben ROGERS Travis DRAGOJLO Vini GIUFRE Tim ROBINSON	Natalie ROGERS Tenika MCGIFFIN RIKILEIGH COFFEY (WC)



# PERFORMANCE PROFESSIONAL ATHLETE HIGHLIGHTS

## National Academy – Queensland

The National Academy - Queensland (NAQ) is a highly focused collective training environment based at the Queensland Tennis Centre. The NAQ is resourced to train athletes from 11 years of age right up until they are selected in Davis or Fed Cup teams.

There were 19 scholarship holders across three different categories during 2014-15:

- Davis Cup Transition Squad (2) – John Millman, Sam Groth
- Full Scholarship (10) – James Duckworth, Jason Kubler, Jordan Thompson, Akira Santillan, Oliver Anderson, Dane Sweeny, Priscilla Hon, Kimberly Birrell, Daniela Kovacevic, Olivia Gadecki
- Wild Card (7) – Ben Mitchell, Blake Ellis, Rocco Taplin, Stephen Stoddart, Alex Crnokrak, Lizette Cabrera, Somer Dalla-Bona

Scholarship holders were offered one-year contracts, funding support, comprehensive on- and off-court programs and an assigned coach who worked with two to three players.

The academy also had several invite players who, although not given a scholarship, were invited to take part in the training program as an addition to their usual training. Players chosen for this opportunity may be regional, players being considered for a Wild Card, or players close to meeting criteria whose private coaches have requested they join into some sessions to increase their training volume.

## Queensland Champions Presentation

Twenty-six Queensland players were recognised for representing Australia at a ceremony with World no.8 Milos Raonic during the Brisbane International. For the first time Queensland's Senior 35+ players were recognised alongside their junior counterparts.

## December Showdown

Each December the country's best players assemble in Melbourne to determine who is the best player across each age group. Olivia Tjandramulia (Rockhampton) won the 18/U girls singles and three other Queenslanders reached the finals; Philip Sekulic (Brisbane) in the 12/U boys singles, Alexander Crnokrak (Gold Coast) in the 14/U boys singles and Blake Ellis (Brisbane) in the 16/U boys singles.

## National Teams Event

Queensland once again sent representative teams to the National Teams Event finals held at the December Showdown in Melbourne. Teams and finish places were as follows:

### Australian Team Championships December Showdown

#### 12/U Girls (1st place overall)

Ollivia Gadecki (Gold Coast)  
Hana Kim (Ipswich)  
Mikayla Zahirovic (Townsville)  
Adam Carey (Team Manager)

#### 12/U Boys (9th place overall)

Casey Hoole (Brisbane)  
Tai Sach (Gold Coast)  
Haru Sonton (Gold Coast)  
Clint Fyfe (Team Manager)

#### 14/U Girls (3rd place overall)

Daniela Kovacevic (Brisbane)  
Shan-Ting Barr (Brisbane)  
Ella Husrefovic (Gold Coast)  
Natasha Kersten (Team Manager)

#### 14/U Boys (1st place overall)

Dane Sweeny (Sunshine Coast)  
Jayden Court (Eidsvold)  
Patrick Harper (Brisbane)  
Des Tyson (Team Manager)

## Foundation Cup

The annual Australian Made Foundation Cup is a national teams event that provides children 13 and under from across rural and regional Australia the opportunity to participate in competitive tennis at the highest level. For the past three years Queensland selection criteria hasn't allowed for players from the Sunshine Coast or Gold Coast to be selected despite other states picking players who reside within an hour of capital cities. To remain competitive in the event, it is proposed that Queensland will select players from the Gold Coast and Sunshine Coast alongside the other regions of Queensland for the 2016 edition.

Teams and finish places were as follows:

### Foundation Cup

#### Girls (3rd place)

Tamie Chew (Hervey Bay)  
Leacy Argent (Cairns)  
Rahni Parle (Rockhampton)  
Amelija Swaffer-Selff (Moura)

#### Boys (6th place)

Matthew Rankin (Blackbutt)  
Seth Trinder (Townsville)  
Stanley Nyika (Mackay)  
Ashley Wilson (Mackay)

## Australian Open Juniors

Nine Queensland players competed in the main draw of the Australian Open Juniors. This is a great achievement considering the tournament only caters for the best 128 players in the world. Special mention to Akira Santillan (Gold Coast) who reached the semi final of the boys singles event. Akira was joined in the main draw by Mitchell Harper (Brisbane), Jack Jaede (Brisbane), Blake Ellis (Brisbane), Kimberly Birrell (Gold Coast), Priscilla Hon (Brisbane), Olivia Tjandramulia (Rockhampton), Naiktha Bains (Brisbane) and Kaylah McPhee (Brisbane).

## Grand Slams

### US Open

John-Patrick Smith and Benjamin Mitchell contested qualifying events at Flushing Meadows. In the main draw Sam Stosur progressed to the third round but lost her match in a tight third set tie break to Kaia Kanepi (EST). Bernard Tomic withdrew with injury from his second round match and Ajla Tomljanovic was knocked out in round one.

### Australian Open

Bernard Tomic (Gold Coast), Samantha Stosur (Gold Coast), John Millman (Brisbane), Ajla Tomljanovic (Brisbane) all competed in the main draw of the Australian Open. Naiktha Bains (Brisbane), Olivia Tjandramulia (Rockhampton), Priscilla Hon (Brisbane), Sara Tomic (Gold Coast), Kimberly Birrell (Gold Coast), Ben Mitchell (Gold Coast), John-Patrick Smith (Townsville), Gavin van Peperzeel (Brisbane) and Maverick Banes (Gold Coast) all played in the qualifying singles.

### Roland Garros

A total of seven Queenslanders competed in the 2015 French Open. John Millman, John-Patrick Smith, Jason Kubler and Benjamin Mitchell competed in qualifying events and in the main draw was Bernard Tomic, Sam Stosur and Ajla Tomljanovic. Tomljanovic and Tomic were both knocked out in the second round, with Tomic losing to fellow Australian Thanasi Kokkinakis in a thrilling five set match. Sam Stosur was defeated by World no.2 Maria Sharapova in the third round.

### Wimbledon

Queensland was well represented at Wimbledon with John-Patrick Smith and John Millman qualifying to join Samantha Stosur and Bernard Tomic in the main draw. Millman won his first round match before losing a very tight encounter to Marcos Baghdatis in the second round. John-Patrick Smith lost a close match in five sets in the opening round whilst Samantha Stosur and Bernard Tomic were eliminated in the third round.

The following Queensland players obtained top 500 ATP or WTA rankings in 2014/15:

### ATP

#24 Bernard Tomic  
#118 John Millman  
#136 Jason Kubler  
#148 John-Patrick Smith  
#204 Ben Mitchell  
#314 Gavin Van Peperzeel  
#347 Maverick Banes

### WTA

#18 Samantha Stosur  
#47 Ajla Tomljanovic  
#184 Ashleigh Barty  
#484 Isabella Holland  
#499 Priscilla Hon



Queensland Champions presentation at the Brisbane International with Milos Raonic



Australian Team Championships 12/U girls winners  
Adam Carey (Team Manager), Hana Kim, Mikayla Zahirovic and Olivia Gadecki



# PERFORMANCE

## PROFESSIONAL ATHLETE HIGHLIGHTS

### International Junior Highlights

#### Priscilla Hon

**WTA ranking #499, ITF ranking #13**  
 Member of 2014 Junior Fed Cup Team  
 Finalist 2014 Australia 15K Pro Tour Doubles  
 Winner 2015 Australia 15K Pro Tour Singles  
 Winner 2015 Australia 15K Pro Tour Doubles  
 Winner 2015 Australia 15K Pro Tour Doubles  
 Winner 2015 Italy 10K Pro Tour Doubles  
 Winner 2014 18s Nationals Doubles

#### Kimberly Birrell

**WTA ranking #589, ITF ranking #18**  
 Member of 2014 Junior Fed Cup Team  
 Finalist 2015 Mildura 15K Pro Tour Singles  
 Finalist 2014 Canada Grade 2 ITF Singles  
 Finalist 2014 Japan Grade A ITF Singles  
 Finalist 2015 Australia Grade 1 ITF Singles  
 Semi-finalist 2014 18s Nationals Singles

#### Sara Tomic

**WTA ranking #642, ITF ranking #47**  
 Finalist 2015 Turkey 10K Pro Tour Doubles  
 Semifinal 2015 Greece 10K Pro Tour Singles  
 Finalist 2015 Egypt 10K Pro Tour Singles  
 Winner 2015 Egypt 10K Pro Tour Singles  
 Semifinal 2014 China Grade 3 ITF Singles  
 Finalist 2014 Australia Grade 4 ITF Singles  
 Winner 2014 Australia Grade 4 ITF Doubles  
 Winner 2014 Australia Grade 4 ITF Singles  
 Finalist 2014 Australia Grade 4 ITF Doubles  
 Winner 2014 Fiji Grade B2 ITF Singles  
 Winner 2014 Fiji Grade B2 ITF Doubles  
 Winner 2014 Japan Grade A ITF Doubles  
 Winner 2014 Korea Grade B1 ITF Doubles

#### Naiktha Bains

**WTA ranking #651, ITF ranking #17**  
 Finalist 2014 Australia 50K Pro Tour Doubles  
 Finalist 2014 Fiji Grade B2 ITF Singles  
 Winner 2014 Fiji Grade B2 ITF Doubles  
 Finalist 2014 USA Grade 1 ITF Doubles  
 Semi-finalist 2015 Thailand Grade 1 ITF Singles  
 Winner 2015 Malaysia Grade 1 ITF Doubles

#### Olivia Tjandramulia

**WTA ranking #670, ITF ranking #43**  
 Finalist 2014 Korea 10K Pro Tour Singles  
 Semi-finalist 2014 Korea Grade 2 ITF Singles  
 Semi-finalist 2014 Korea Grade B1 ITF Singles  
 Semi-finalist 2015 Thailand Grade 1 ITF Singles  
 Winner 2015 Thailand Grade 1 ITF Doubles  
 Finalist 2015 Malaysia Grade 1 ITF Singles  
 Winner 2015 Malaysia Grade 1 ITF Doubles  
 Finalist 2015 Great Britain Grade 1 ITF Doubles  
 Winner 2014 18s Nationals Singles

#### Lizette Cabrera

**WTA ranking #910**  
 Finalist 2014 Australia 15K Pro Tour Doubles  
 Semi-finalist 2014 18s Nationals Singles

#### Aleksa Cveticanin

**ITF ranking #370**  
 Finalist 2014 Australia Grade 5 ITF Doubles  
 Winner 2014 Australia Grade 5 ITF Doubles  
 Winner 2015 Gallipoli Youth Cup (Australia) Grade 4 ITF Singles  
 3rd place 2014 14s QLD State Championships Singles  
 Winner 2014 14s QLD State Championships Doubles  
 4th place 2014 14s NSW State Championships Singles  
 Finalist 2014 14s NSW State Championships Doubles  
 4th place 2014 14s Nationals Singles

#### Ella Husrefovic

**ITF ranking #505**  
 Finalist 2014 Australia Grade 5 ITF Doubles  
 Semi-final 2015 New Caledonia Grade 5 ITF Singles  
 4th place 2014 14s QLD State Championships Singles  
 4th place 2015 16s Victorian State Championships Singles  
 Winner 2015 16s Victorian State Championships Doubles

#### Daniela Kovacevic

**ITF ranking #537**  
 Semifinal 2014 Australia Grade 4 Singles  
 Winner 2014 14s QLD State Championships Doubles  
 Finalist 2015 16s Victorian State Championships Doubles

#### Kaylah McPhee

**ITF ranking #782**  
 Finalist 2014 16s National Doubles

#### Gabriela McLaughlin

**ITF ranking #1635**  
 Finalist 2014 16s QLD State Championships Singles  
 Winner 2014 16s QLD State Championships Doubles

#### Olivia Gadecki

Member of 2015 World Junior Teams Team  
 Finalist 2014 14s QLD State Championships Singles  
 Winner 2014 Bruce Cup National Singles  
 Finalist 2014 14s NSW State Championships Doubles

#### Shan-Ying Barr

Winner 2014 14s QLD State Championships Singles



*Priscilla Hon won her first professional title in May 2014 at the Mornington Peninsula Tennis International*

#### Oliver Anderson

**ATP ranking #1257**  
 Member of 2014 Junior Davis Cup Team

#### Akira Santillan

**ATP ranking #1438, ITF ranking #39**  
 Winner 2014 Canada Grade 1 ITF Singles  
 Winner 2014 Canada Grade 1 ITF Doubles  
 Winner 2014 Japan Grade 2 ITF Doubles  
 Semi-final 2014 Korea Grade 2 ITF Singles  
 Winner 2014 Korea Grade 2 ITF Doubles  
 Winner 2015 Australia Grade 1 ITF Doubles  
 Semifinal 2015 Australian Open Junior Championships Singles

#### Blake Ellis

**ATP ranking #1592, ITF ranking #553**  
 Member of 2015 Junior Davis Cup Team  
 Winner 2014 16s NSW State Championships Singles  
 Finalist 2014 16s Nationals Singles  
 Quarterfinalist 2014 18s Nationals Singles

#### Mitchell Harper

**ATP ranking #1828, ITF ranking #185**  
 Quarterfinal 2014 18s Nationals Singles  
 Winner 2014 18s Nationals Doubles

#### Jack Jaede

**ATP ranking #2036, ITF ranking #933**  
 Quarterfinalist 2014 18s Nationals Singles  
 Winner 2014 18s Nationals Doubles

#### Moerani Bouzige

**ITF ranking #262**  
 Semi-finalist 2015 Gallipoli Youth Cup (Australia) Grade 4 ITF Singles  
 Winner 2015 New Caledonia Grade 5 ITF Singles  
 Winner 2015 Fiji Grade 5 ITF Singles  
 Winner 2015 Australia Grade 5 ITF Singles  
 Winner 2015 14s Victorian State Championships Doubles

#### Nathanael Consalvo

**ITF ranking #344**  
 Semi-finalist 2015 Kenya Grade 4 ITF Singles  
 Finalist 2015 Kenya Grade 4 ITF Doubles  
 Winner 2015 Kenya Grade 5 ITF Single

#### Alexander Crnokrak

**ITF ranking #832**  
 Finalist 2015 Australia Grade 4 ITF Singles  
 Winner 2014 14s NSW State Championships Singles  
 Finalist 2014 14s National Singles

#### Adam Walton

**ITF ranking #877**  
 Finalist 2015 14s Victorian State Championships Doubles

#### Will Maher

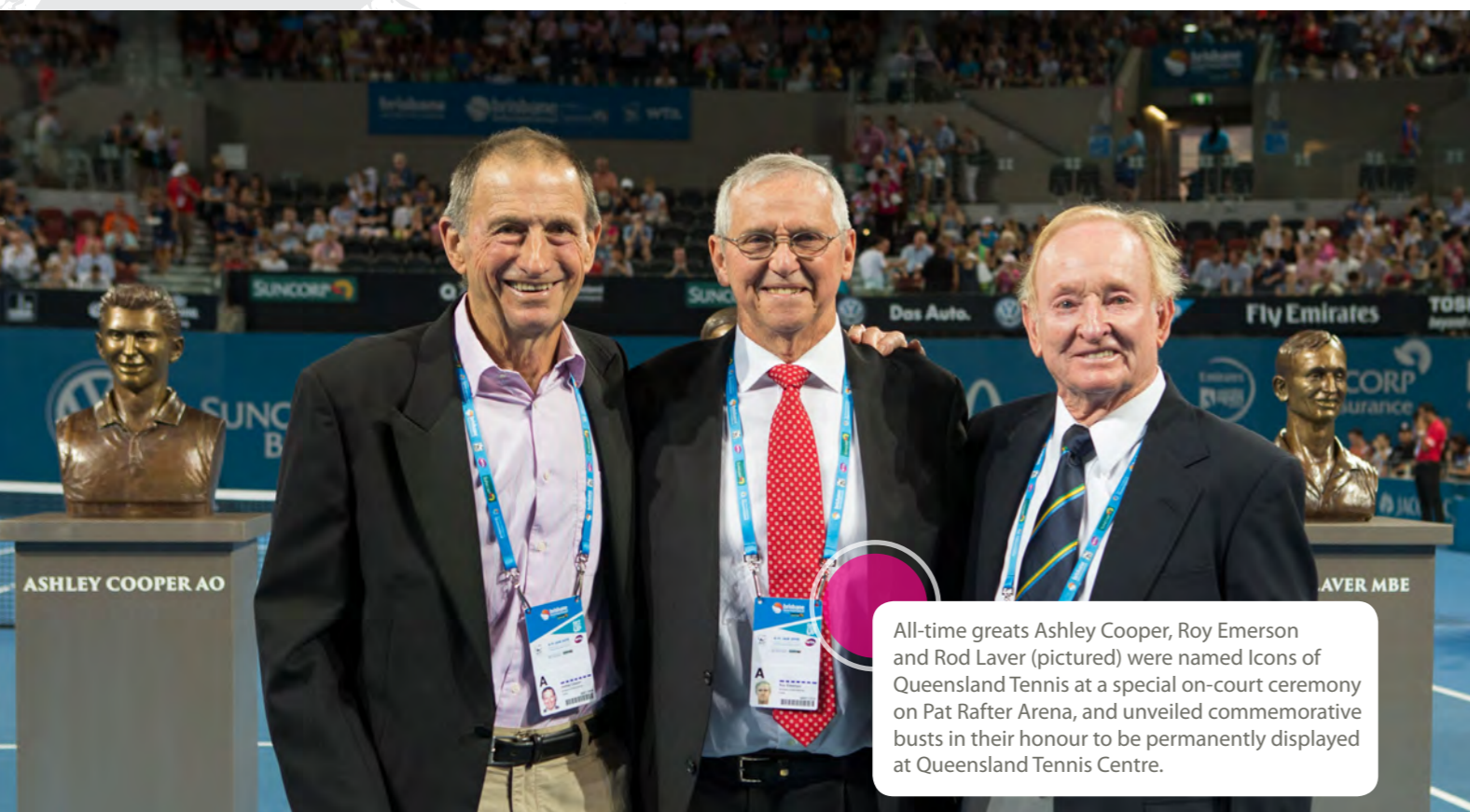
**ITF ranking #1208**  
 3rd Place 2014 14s QLD State Championships Singles  
 Winner 2014 14s QLD State Championships Doubles  
 Finalist 2015 16s Victorian State Championships Doubles

#### Dane Sweeny

Finalist 2014 14s QLD State Championships Singles  
 3rd Place 2015 14s Victorian State Championships Singles



# QUEENSLAND TENNIS COMMUNITY ACHIEVEMENTS & ACKNOWLEDGEMENTS



All-time greats Ashley Cooper, Roy Emerson and Rod Laver (pictured) were named Icons of Queensland Tennis at a special on-court ceremony on Pat Rafter Arena, and unveiled commemorative busts in their honour to be permanently displayed at Queensland Tennis Centre.

## Queensland Tennis Awards

The Queensland Tennis Awards ceremony was held at Rydges South Bank in November, with 282 guests attending to celebrate the night of nights for tennis in Queensland. The event showcased the best players, coaches, volunteers and clubs and their service to tennis throughout the year.

A new award was introduced this year, the Tennis Queensland Regional Shield to recognise a regional club that shows initiative to grow and commitment to the sport. Regional communities are the backbone of the sport and adapting this award into proceedings provided an opportunity for Tennis Queensland to thank the clubs who bring our game to life all across the state.

Congratulations to all finalists as well as the 2015 award winners listed in the following table:

AWARD	RECIPIENT
Queensland Club of the Year	Morningside Tennis Centre (Queensland Community Lawn Tennis Association)
Ashley Cooper Medal – Athlete Of The Year	Samantha Stosur
Wendy Turnbull Medal – Junior Athlete of the Year	Kimberly Birrell
Eddie Machin – Junior Regional Athlete of the Year	Mikayla Zahirovic
Most Outstanding Tournament	2014 Hutchinson Builders Toowoomba International
Most Outstanding 35+ Senior	Lee Taylor
Most Outstanding Athlete with a Disability	Archie Graham
Coaching Excellence – Talent development	Graeme Brimblecombe
Coaching Excellence – Club	Fred Lay
Coaching Excellence – ANZ Tennis Hot Shots	Dominic Andrew
Geoffrey E Griffith – Volunteer of the Year	Kate Casswell
Excellence in Officiating	Les Killer
Regional Shield	Callide Valley Tennis Association

## OFFICE BEARERS

### BOARD OF DIRECTORS

Mark Bloomfield (President)  
Leonie Taylor (Treasurer)  
Ross Rolfe  
Peter Robertson  
Alan Harris  
Murray Whitbread  
Doug Kingston

### LIFE MEMBERS

Mal Anderson  
Vic Bayer  
Col Blatch  
Ashley Cooper  
Eddie Crowther (dec)  
Charles Edwards (dec)  
Roy Emerson  
Daphne Fancutt  
Trevor Fancutt  
Chris Freeman  
Vince Gair (dec)  
Geoff Griffith (dec)  
Ivy Haim (dec)  
Lester Hancock (dec)  
Frank Hennessy  
Noel Kratzman (dec)  
Frank Land (dec)  
Rod Laver  
Ron Leahy (dec)  
Bill Peel  
Maurice Philip  
William Power (dec)  
Ross Rolfe  
Vanette Tobin  
Keith Waugh (dec)

### STATE WIDE AFFILIATES

Queensland Primary Schools Vanette Tobin  
Queensland Secondary Schools Bob Campbell  
Tennis Officials Australia - Qld Troy McKernan

### REGIONAL ASSEMBLIES

#### FAR NORTH

Chairperson Mike Ernst  
Treasurer Kylie Farinelli  
Regional Member Guy Thomas

#### NORTH

Chairperson Graham Wicks  
Deputy Chairperson Col Caswell  
Treasurer Steve Merker  
Secretary Liz Jones  
Regional Members Graham Wicks, Col Caswell

#### CENTRAL

Chairperson Murray Whitbread  
Deputy Chairperson Pat Peach  
Treasurer/ Secretary Glenn Vickery  
Regional Members Glenn Vickery, Murray Whitbread

#### SUNSHINE COAST

Chairperson Annie Lyons  
Deputy Chairperson Matt Deverson  
Treasurer Lyn Brentnall  
Secretary Gaylene Smith  
Regional Members Matt Deverson, Rob Schmitt

#### METROPOLITAN

Chairperson Warwick Nicol  
Deputy Chairperson Gareth Keating  
Treasurer Milton Rothman  
Regional Members Warwick Nicol, Milton Rothman, Steve Miller

#### GOLD COAST

Chairperson Roger Marquass  
Treasurer Stephen Kua  
Regional Members James Rapkins, Mike Ford

#### SOUTH

Chairperson Allen Smythe  
Deputy Chairperson Jenny Griggs  
Treasurer Ross Smythe  
Secretary Donn Bell  
Regional Member Ross Smythe

#### WEST

Deputy Chairman Brett Walsh  
Secretary Janice Rowlands  
Regional Member Theresa Braithwaite

### FINANCE & AUDIT COMMITTEE

Leonie Taylor (Chairperson)  
Peter Robertson, Mark Bloomfield, Ross Rolfe  
Cameron Pearson, Di MacDonald

### RISK MANAGEMENT COMMITTEE

Peter Robertson (Chairperson)  
Leonie Taylor, Ross Rolfe, Mark Bloomfield  
Cameron Pearson, Matt Richards

### NOMINATION & REMUNERATION COMMITTEE

Mark Bloomfield (Chairperson)  
Leonie Taylor, Ross Rolfe, Peter Robertson

### TOURNAMENTS COMMITTEE

Murray Whitbread (Chairperson)  
Alan Harris, Ross Smythe, Steve Merker  
Matt Richards

### COMMUNICATIONS STRATEGY REFERENCE GROUP

Carly Rossi (Chairperson)  
Doug Kingston, Nadeena Whitby  
Matt Richards

### STATE SELECTION COMMITTEE

Matt Richards (Chairperson)  
Ashley Naumann, Graeme Brimblecombe

### DISCIPLINARY TRIBUNAL

Fred Albietz (Chairperson)  
Chris Wlodarczyk, Peter Richards, Trevor Fancutt, Bronwyn Draper, His Honour Judge Michael Rackemann

### APPEALS COMMITTEE

Robert O'Regan (Chairperson)  
Mike Lyons, Don Muller, Daphne Fancutt, Dennis Draper



# QUEENSLAND TENNIS COMMUNITY

## AFFILIATES



Thank you to each and everyone of our affiliated clubs, centres and associations for providing playing opportunities for Queenslanders

### FAR NORTH REGION

Atherton Tennis Club Inc  
Cairns International Tennis Centre  
Cairns Tennis Club Inc  
Clifton Beach Tennis Club Inc  
Cooktown Tennis Club Inc  
Earlville Tennis Club Inc  
Edge Hill Tennis Club Inc  
Edmonton Tennis Club Inc  
Farinelli Tennis Academy  
Freshwater Tennis Club Inc  
Gordonvale and District Tennis Assoc Inc  
Innisfail District Tennis Association Inc  
Malanda Tennis Club Inc  
Mareeba Tennis Club Inc  
Mission Beach Tennis Club Inc  
Port Douglas Tennis Club Inc  
Ravenshoe Tennis Club Inc  
Redlynch Valley Tennis Club Inc  
Trinity Beach Tennis Club Inc  
Tully Tennis and Social Club Inc  
Woree Tennis Club Inc  
Yungaburra Tennis Club Inc

### NORTH REGION

Ayr Tennis Association Inc  
Bowen Tennis Association Inc  
Calen Tennis Association Inc  
Charters Towers Tennis Club Inc  
Cleveland Tennis Club Inc  
Gloucester Sport & Recreation Association Inc  
Home Hill Tennis Association Inc  
Ingham Tennis Association Inc  
Kalynda Chase Tennis Centre  
Mackay & District Tennis Association Inc  
Mackay Tennis Association Inc  
Moranbah Tennis Association Inc  
Proserpine District Lawn Tennis Assoc Inc  
Sarina & District Tennis Association Inc  
Tennis Townsville Inc  
Tennis Whitsunday  
Western Suburbs Tennis Club Inc

### CENTRAL REGION

Athelstone Tennis Club  
Baralaba Tennis Club Inc  
Blackwater Tennis Association Inc  
Bundaberg & District Junior Tennis Association Inc  
Bundaberg & District Tennis Association Inc  
Bundaberg Seniors Tennis Club Inc  
Callide Valley Tennis Association Inc  
Capella Tennis Club Inc  
Dawson Callide Valleys Seniors Tennis Association  
Dingo Tennis Club Inc  
Dysart Tennis Club Inc  
Emerald and District Lawn Tennis Association Inc  
Fraser Coast Tennis Association Inc  
Gayndah & District Tennis Assoc Inc  
Gladstone District Tennis Association Inc  
Hervey Bay & District Tennis Association Inc  
Isis Tennis Club  
Maryborough & District Jnr Tennis Assoc Inc  
Middlemount Community Sports Association Inc  
Monto & District Tennis Assoc Inc  
Moura Tennis Club Inc  
Mundubbera Tennis Association Inc  
Rockhampton Junior Tennis Association Inc  
Rockhampton Tennis Association Inc  
Rossendale Tennis Club Inc  
Springsure Tennis Club Inc  
SunCity Sports Club Inc  
Tannum Sands Tennis Association Inc  
Tennis Rockhampton Ltd  
Theodore Tennis Association Inc  
Yeppoon Tennis Club Inc.

### SUNSHINE COAST REGION

Ballinger Park Tennis Club  
Bli Bli Tennis Club Inc  
Bribie Island Tennis Club Inc  
Caboolture & District Lawn Tennis Association Inc  
Caloundra Tennis Association Inc  
Coolum Tennis Club Inc  
Cooroy Tennis Club Inc

### SUNSHINE COAST REGION (CONTINUED)

Eudlo & District Tennis Association Inc  
Eumundi Tennis Club Inc  
Gheerulla Tennis Club  
Glenview Mooloolah Tennis Club Inc  
Gympie & District Tennis Association  
Gympie Cooloola Veterans Tennis Assoc Inc  
Imbil Tennis Club  
Kandanga Tennis Club  
Kawana Tennis Club Inc  
Kilcoy District Tennis Association  
Kin Kin Tennis Club Inc  
Kingaroy & District Tennis Association Inc  
Kronk Tennis  
Landsborough Tennis Club Inc  
Maleny Tennis Club  
Mapleton Tennis Club Inc.  
Maroochydore Tennis Club Inc  
Montville Village Association Inc  
Mooloolaba Tennis Club Inc.  
Nambas Tennis Club Inc  
Nambour & District Tennis Association Inc  
Nambour Heights Progress Association Tennis Club  
Noosa District Tennis Association Inc  
Noosa Springs Resort and Spa  
Noosa Tennis Club Inc  
Noosaville Tennis Club Inc  
Palmwoods Tennis Club Inc  
Peregian Tennis Club Inc  
Pomona Tennis Club  
St Andrew's Anglican College  
Suncoast Christian College  
Sunshine Coast Ladies Midweek Tennis Association  
Sunshine Coast Tennis Association Inc  
Tennis Veterans Sunshine Coast Association Inc  
Tewantin Tennis Club Inc  
Tin Can Bay Tennis Club Inc  
Witta Tennis Club Inc  
Woolooga Recreational & Hall Welfare Assoc Inc  
Woombye Tennis Club Inc  
Yandina Tennis Club  
Zoran's Tennis Academy

### METROPOLITAN REGION

Aspire Tennis Australia  
Brisbane Boys College  
Brisbane Ladies Tennis Association Inc  
Brisbane Night Tennis Association Inc  
Brisbane Seniors Tennis Club  
Brookfield Tennis Centre  
Cambridge Tennis  
Chandler Tennis Centre  
Coops Racquet Sports  
Dayboro Tennis Club Inc  
Everton Tennis & Gear  
Fancutts Junior Tennis Club  
Ferry Hills Tennis Centre  
Frawley Racquet Club  
Fred Daniel Tennis  
Greater Brisbane Junior Tennis Association Inc  
Griffith University Tennis Centre  
Guse's Tennis Centre (Metro Region)  
In Tennis  
Ipswich & West Moreton Tennis Association Inc  
Ipswich District Junior Tennis Association Inc  
Ipswich Tennis Centre  
Kelvin Grove State College  
Laff's Tennis  
LifeTime International Pty Ltd  
Lifetime Tennis Brisbane West Pty Ltd  
Malpass Tennis Coaching  
Marsden Tennis Centre  
Matchpoint Tennis  
Northside Ladies Tennis Club  
Park Ridge Tennis Centre  
Paul Hanley Tennis  
Pine Country Tennis Centre  
Queensland School Sport  
Queensland Tennis Centre  
Redcliffe Tennis Association Inc  
Redland Bay Tennis Club Inc  
Redlands Lawn Tennis Association Inc  
Remar Tennis Academy  
Return Serve Inc  
Roy Emerson Tennis Centre  
Samford Tennis Club Inc  
Sandgate and District Youth Tennis Association  
Shaw Park Tennis Centre  
Sheldon Tennis Centre

### METROPOLITAN REGION (CONTINUED)

Sportennis (Le Victor Pty Ltd/Daily Sporting Pty Ltd)  
Springfield Lakes Tennis Club Inc  
St Paul's School  
Steve & Trish Griffin  
Sunnybank Tennis Centre  
Sunshine Tennis  
Tall Gums Sports Centre  
Tennis Brisbane  
Tennis Ipswich Inc  
Tennis Logan City  
Tennis Officials Australia Qld Div Inc  
Tennis Seniors Queensland Association Inc  
The Gap Health & Racquet Club  
The QLD Community Lawn Tennis Assoc (QCLTA)  
The University of Queensland Tennis Club Inc  
Thorneside Community Tennis Association Inc  
Top Tennis Academy  
University of Queensland Tennis Centre  
West Brisbane Tennis Centre  
Woods Tennis  
Wynnum District Lawn Tennis Association Inc

### GOLD COAST REGION

Australia Tennis Academy  
Beaudesert & District Tennis Association Inc  
Beenleigh Tennis Inc  
Breakpoint Tennis  
Burleigh Heads Tennis Club Inc  
Currumbin Tennis Club Inc  
Discovery Park Tennis Club Inc  
Emerald Lakes Tennis Centre  
Fassifern Tennis Association Inc  
Gold Coast Albert Junior Tennis Club Inc  
Gold Coast Mid-Week Ladies Tennis Association Inc  
Gold Coast Seniors Tennis Club Inc  
Hinterland Tennis Club Inc  
Hope Island Tennis Club Inc  
Miami Tennis Club Inc  
Mudgeeraba Tennis Club  
Palm Beach-Currumbin State High School  
Pimpama Island Sports Association Inc.  
Pro-One Tennis Academy  
Somerset College Tennis Centre

### GOLD COAST REGION (CONTINUED)

Southport State High School  
St Hilda's School (Pure Tennis Academy)  
Tallara Tennis Club Inc  
Tamborine Mountain Tennis Club Inc  
Tennis Central Miami  
Tennis Gold Coast Inc.  
Tennis on 11th Inc

### SOUTH REGION

Bollon Tennis Club Inc  
Cecil Plains Tennis Club Inc  
Chinchilla Tennis Association Inc  
Clifton & District Tennis Association Inc  
Cunnamulla PCYC  
Dalby & District Tennis Association Inc  
Esk Tennis Club Inc  
Gatton Tennis Association Inc  
Goondiwindi & District Tennis Association Inc  
Highfields Tennis Centre  
Lockyer Tennis Association Inc  
Pittsworth Tennis Club Inc  
Range Tennis Club Inc  
Ravensbourne Sporting Association Inc  
Roma & District Tennis Club Inc  
St George Tennis Club Inc  
Stanthorpe & District Tennis Association Inc  
Tara Tennis Club Inc  
Taroom Tennis Club Inc  
Toogoolawah Tennis Club  
Toowoomba Regional Tennis Centre  
Toowoomba Tennis Association Inc  
Wandoan Tennis Club Inc  
Warwick & District Tennis Association Inc  
Yuleba Lawn Tennis Club Inc

### WEST REGION

Barcaldine Lawn Tennis Club Inc  
Copper City Tennis Club Inc  
Corfield Sports Club Inc  
Flinders Tennis Club Inc  
Longreach Tennis Club Inc  
Mornington Island State School  
Morven & District Tennis Club  
Richmond Tennis Club  
Winton Tennis Club



# THE QUEENSLAND TEAM



## EXECUTIVE

CEO Cameron Pearson

## ADMINISTRATION

Business Services Manager Di MacDonald

Administration & Reception Coordinator Cath Ware

Administration and Events Assistant Kate Thurtell

## MARKETING AND COMMUNICATIONS

Marketing & Communications Coordinator Carly Rossi

Marketing & Membership Assistant Katrina Solomon

## TOURNAMENTS & COMPETITIONS

Tournaments & Competitions Manager Matt Richards

Tournaments & Competitions Coordinator Travis Dragojlo

Officiating & Development Coordinator Cheryl Jenkins

## COMMUNITY TENNIS

Community Tennis Manager Elia Hill

Far North Community Tennis Officer Ryan Coffey

North Community Tennis Officer Sam Bradshaw

Central/West Community Tennis Officer Lauren McDonald

Sunshine Coast Community Tennis Officer Tyson Thompson

Metropolitan Community Tennis Officer Leanne Mascall

Metropolitan Community Tennis Officer Michael Sherry

Gold Coast Community Tennis Officer Ellie Ryan

South Community Tennis Officer Rachel Wright

## CLUB DEVELOPMENT

Tennis Projects Manager Ken Hick

## FACILITIES

Facilities Development Manager Michael Blomer

## COACH & TALENT DEVELOPMENT

Coach & Talent Development Manager Ashley Naumann

Coach & Talent Development Coordinator Scott Rawlins

Coach & Talent Development Administrator Courtney Haynes

## QUEENSLAND TENNIS CENTRE

Venue Manager Jon Bonner

Grounds Supervisor Judd Percy

Apprentice Groundsperson Callum Bell

David Campbell

Functions and Events Executive Alex Tucker (maternity leave)

## NATIONAL ACADEMY

National Academy Manager Chris Mahony

Head Coach Brent Larkham

Coaches Mark Draper

Anthony Richardson

Des Tyson

Adam Carey

Anthony Lane

Jamie Morgan

Physical Performance Coach Dirk Spits

Physical Performance Coach Alex Hynes

Physiotherapist Adam Schumacher

## BRISBANE INTERNATIONAL

Commercial Manager Dan Glass

Operations Manager Beth Smith

Corporate Sales Manager Michael Murphy

Ticketing Coordinator Sharyn Ritchie

# OUR PARTNERS



Stadiums Queensland



Tennis Queensland would like to thank our dedicated partners and sponsors for supporting us in delivering and growing tennis in communities throughout Queensland



# DIRECTORS REPORT

ROYAL QUEENSLAND LAWN TENNIS ASSOCIATION LTD  
 ABN 60 009 713 544  
 FINANCIAL REPORT FOR THE YEAR ENDED 30 JUNE 2015

Your Directors present this report on Royal Queensland Lawn Tennis Association Ltd (“the Association”) for the year ended 30 June 2015.

## Directors

The names of each person who has been a director during the year and up to the date of this report are:

- Mr M Bloomfield (President since March 2015)
- Ms L Taylor (Treasurer)
- Mr A Harris
- Mr D Kingston
- Mr P Robertson
- Mr R Rolfe
- Mr M Whitbread
- Mr K Laffey (Resigned October 2014)

Directors have been in office since the start of the financial year to the date of this report unless otherwise stated.

## Principal Activities

The principal activity of the Association during the financial year was to manage the sport of Tennis in Queensland through the core business areas of: community tennis, tournaments, player development, facilities development and management, marketing and public relations, finance and administration and the Queensland Tennis Centre. There were no significant changes to the principal activities of the Association during the year.

The Association’s vision is to make tennis part of life for every Queenslanders and the following strategic objectives are considered critical to achieve that vision:

- Making tennis the most engaging and inclusive sporting community in Queensland;
- Facilitating more welcoming and sustainable places to play;
- Fostering and celebrating more champions for tennis than ever before.

To achieve the objectives, the company has adopted the following strategies:

**COMMUNITY:** Offer engaging tennis programs; provide relevant and quality competitions for all players; use affiliation, membership and the Brisbane International to benefit the sport; connect people to tennis by providing an informative and enjoyable online experience.

**FACILITIES:** Promote a variety of sustainable operating models; target areas for facility growth and consolidation; identify and build five priority projects based on need; develop better relationships with all levels of government.

**CHAMPIONS:** Support all administrators, volunteers and Regional Assemblies by providing best practice models and transparent governance; offer high quality competition and training environments that are safe, demonstrate integrity and are available for all Queenslanders; promote past success whilst striving to provide world class training environments; reward fans with the best possible experience and encourage their participation in tennis.

The Association’s objectives have been designed to complement the constitutional Objects found in Clause 3.1 of the Constitution.

# DIRECTORS REPORT

ROYAL QUEENSLAND LAWN TENNIS ASSOCIATION LTD  
 ABN 60 009 713 544  
 FINANCIAL REPORT FOR THE YEAR ENDED 30 JUNE 2015

## Information on Directors

NAME OF DIRECTOR	QUALIFICATIONS, EXPERIENCE & SPECIAL RESPONSIBILITIES
<b>Mark Bloomfield</b> <i>B Bus (Acctcy)</i> CA MAICD Development Coach	Director since December 2013 and President since March 2015 President – Tennis Brisbane 2011-2013 Treasurer – Tennis Brisbane from 2007-2010 Member of Institute of Chartered Accountants Australia since 1995 Member of United States Racquet Stringers Association since 2001 Member of Junior Development Coach (Tennis Australia) since 2000 Owner & Operator, TennisGear
<b>Leonie Taylor</b> <i>B Bus (Acctcy)</i> FAICD FCA	Director and Treasurer since May 2010 Director, Bentleys (Qld) Pty Ltd Director, Qld Police Citizens Youth Welfare Association Limited Former Director and Chairman, North Qld Bulk Ports Limited
<b>Allan Harris</b> <i>Elite Level, Club</i> Development Coach	Director from November 2012 Regional Member since 2001 Director - Alan Harris Tennis School, Mackay Tournament Director Junior Development Series 1999 to present Tournament Director Mid-north QLD Open 1980 to present Vice-President Magpies Rugby League Football Club 2013 Recipient: National Recognition Award for Contribution to Sport from John Howard
<b>Doug Kingston</b>	Director since November 2009 Tennis Administrator and promoter since 1978 Project Implementation manager, North Queensland Bio-Energy Corporation Former journalist, sports editor and marketing manager, Townsville Bulletin newspaper
<b>Peter Robertson</b> <i>B App Sc (Maths)</i> MAICD	Director since November 2010 Co-founder Saltbush Software (1980 – 1991) Co-founder Renard Developments Pty Ltd (1990 – Current) Co-founder Emission Capital Management Ltd (2010 – Current) Member of St Margaret’s School Council (2011 – Current) Former member and chair of the Brisbane City Works Board (2001 – 2006) Former member of the Brisbane City Council Business Group Board (2003 – 2005)
<b>Ross Rolfe AO</b> AICD	Director from November 2002 until November 2005 and Director since 2007 Chair WDS Chair, CS Energy Director, Infigen Energy Managing Director, Lend Lease Resources Infrastructure
<b>Murray Whitbread</b> <i>Level 3 Coach</i>	Director since November 2009 Chairperson – Central Regional Assembly since 2005 Regional Member since 1997 Life Member BJTA & BDTA Founding Member Central Queensland Junior Masters Circuit Recipient: Awards Queensland Coach of the Year 1995
<b>Ken Laffey</b>	Resigned as President and Director in October 2014 Regional Member from 1998 until 2009 Past President, Tennis Coaches Australia (Qld) Past President, Tennis Brisbane Tennis Centre Owner



# DIRECTORS REPORT

ROYAL QUEENSLAND LAWN TENNIS ASSOCIATION LTD  
ABN 60 009 713 544

FINANCIAL REPORT FOR THE YEAR ENDED 30 JUNE 2015

## Meeting of Directors

During the financial year, fifteen (15) meetings of directors (including committees meetings) were held. Attendances by each director were as follows:

	(A)	(B)	(C)	(D)	(E)	(F)	(G)	(H)
Mark Bloomfield (President)	7	6	4	4	3	3	1	1
Leonie Taylor (Treasurer)	7	5	4	4	3	3	1	-
Ken Laffey	2	1	2	2	2	2	-	-
Alan Harris	7	7	-	-	-	-	-	-
Doug Kingston	7	5	-	-	-	-	-	-
Peter Robertson	7	7	4	4	3	3	1	1
Ross Rolfe	7	6	4	2	3	2	1	1
Murray Whitbread	7	7	-	-	-	-	-	-

(A) Board meetings eligible to attend.

(B) Board meetings attended.

(C) Finance & Audit meetings eligible to attend.

(D) Finance & Audit meetings attended.

(E) Risk Management meetings eligible to attend.

(F) Risk Management meetings attended.

(G) Nomination and Remuneration Committee eligible to attend.

(H) Nomination and Remuneration meetings attended.

The Association is incorporated under the Corporations Act 2001 and is a company limited by guarantee. If the Association is wound up, the constitution states that each member is required to contribute to a maximum of \$10 each towards any outstanding obligations of the Association. At 30 June 2015, the total amount that members of the company are liable to contribute if the Association is wound up is \$180. (2014: \$190).

# DIRECTORS REPORT

ROYAL QUEENSLAND LAWN TENNIS ASSOCIATION LTD  
ABN 60 009 713 544

FINANCIAL REPORT FOR THE YEAR ENDED 30 JUNE 2015

## Auditor's Independence Declaration

The lead auditor's independence declaration for the year ended 30 June 2015 has been received and can be found on page 48.

Signed in accordance with the resolution of the Board of Directors.



MARK BLOOMFIELD  
PRESIDENT

Brisbane, 6 October 2015



LEONIE TAYLOR  
TREASURER





# DIRECTORS REPORT

ROYAL QUEENSLAND LAWN TENNIS ASSOCIATION LTD  
ABN 60 009 713 544

FINANCIAL REPORT FOR THE YEAR ENDED 30 JUNE 2015

## AUDITOR'S INDEPENDENCE DECLARATION UNDER S 307C OF THE CORPORATIONS ACT 2001 TO THE DIRECTORS OF ROYAL QUEENSLAND LAWN TENNIS ASSOCIATION LIMITED

I declare that to the best of my knowledge and belief, during the year ended 30 June 2015, there have been no contraventions of:

- a) The auditor independence requirements of the *Corporations Act 2001* in relation to the audit; and
- b) Any applicable code of professional conduct in relation to the audit.

*PKF Hacketts*

**PKF Hacketts Audit**

Shaun Lindemann  
Partner

Brisbane, 6 October 2015

### Declaration by Directors

In accordance with a resolution of the directors of Royal Queensland Lawn Tennis Association Ltd ("the Company"), the directors of the Company declare that:

1. The financial statements and notes, as set out on pages 52 to 70, are in accordance with the Corporations Act 2001 and:
  - (a) comply with Australian Accounting Standards – Reduced Disclosure Requirements; and
  - (b) give a true and fair view of the financial position of the Company as at 30 June 2015 and of its performance for the year ended on that date.
2. In the directors' opinion, there are reasonable grounds to believe that the Company will be able to pay its debts as and when they become due and payable.

Signed in accordance with a resolution of the Board of Directors.

MARK BLOOMFIELD  
PRESIDENT

Brisbane, 6 October 2015

LEONIE TAYLOR  
TREASURER



**INDEPENDENT AUDITOR'S REPORT TO THE MEMBERS OF ROYAL  
QUEENSLAND LAWN TENNIS ASSOCIATION LTD**

**INDEPENDENT AUDITOR'S REPORT TO THE MEMBERS OF ROYAL  
QUEENSLAND LAWN TENNIS ASSOCIATION LTD  
(continued)**

**Report on the Financial Report**

We have audited the accompanying financial report of Royal Queensland Lawn Tennis Association Ltd ("the company"), which comprises the statement of financial position as at 30 June 2015, and the statement of profit or loss and other comprehensive income, statement of changes in equity and statement of cash flows for the year ended on that date, a summary of significant accounting policies and other explanatory information and the directors' declaration.

**Directors' Responsibility for the Financial Report**

The directors of the company are responsible for the preparation of the financial report that gives a true and fair view in accordance with Australian Accounting Standards – Reduced Disclosure Requirements and the Corporations Act 2001 and for such internal controls as the directors determine is necessary to enable the preparation of the financial report that is free from material misstatement, whether due to fraud or error.

**Auditor's Responsibility**

Our responsibility is to express an opinion on the financial report based on our audit. We conducted our audit in accordance with Australian Auditing Standards. Those standards require that we comply with relevant ethical requirements relating to audit engagements and plan and perform the audit to obtain reasonable assurance whether the financial statements are free from material misstatement.

An audit involves performing procedures to obtain audit evidence about the amounts and disclosures in the financial report. The procedures selected depend on the auditor's judgment, including the assessment of the risks of material misstatement of the financial report, whether due to fraud or error. In making those risk assessments, the auditor considers internal control relevant to the entity's preparation of the financial report that gives a true and fair view in order to design audit procedures that are appropriate in the circumstances, but not for the purpose of expressing an opinion on the effectiveness of the entity's internal control. An audit also includes evaluating the appropriateness of accounting policies used and the reasonableness of accounting estimates made by the directors, as well as evaluating the overall presentation of the financial statements.

We believe that the audit evidence we have obtained is sufficient and appropriate to provide a basis for our audit opinion.

**Independence**

In conducting our audit, we have complied with the independence requirements of the *Corporations Act 2001*.

**Auditor's Opinion**

In our opinion, the financial report of Royal Queensland Lawn Tennis Association Ltd is in accordance with the Corporations Act 2001, including:

- (i) Giving a true and fair view of the company's financial position as at 30 June 2015 and of its performance for the year ended on that date; and
- (ii) Complying with Australian Accounting Standards – Reduced Disclosure Requirements and the *Corporations Regulations 2001*.

*PKF Hacketts*

**PKF Hacketts Audit**



**Shaun Lindemann  
Partner**

Brisbane, 6 October 2015



# FINANCIAL STATEMENTS

## STATEMENT OF PROFIT OR LOSS AND OTHER COMPREHENSIVE INCOME FOR THE YEAR ENDED 30 JUNE 2015

		\$	\$
	NOTES	2015	2014
Revenue from ordinary activities	2	3,779,485	3,934,952
<b>Expenses from ordinary activities</b>			
Player Development		(107,897)	(140,295)
Community Tennis		(894,535)	(994,337)
Tournament Program		(523,103)	(447,023)
Technical Services		(164,825)	(221,500)
Marketing and Public Relations		(448,141)	(163,504)
Finance and Administration		(615,917)	(610,777)
Queensland Tennis Centre		(607,591)	(637,001)
Queensland Tennis Centre Operations		–	(284,462)
Depreciation		(21,555)	(9,790)
		(3,383,564)	(3,508,689)
Profit from operating activities before income tax expense		395,921	426,263
Revenue from other activities	4	215,210	186,330
Expenses from other activities	4	(349,550)	(260,479)
Rental expense for State Tennis Centre		(55,223)	(85,240)
Net profit after other activities before income tax		206,358	266,874
Income tax expense	1 (b)	–	–
Net profit after other activities		206,358	266,874
<b>Other comprehensive income</b>			
<b>Items that may be reclassified subsequently to profit or loss</b>			
Net gain/(loss) on revaluation of available for sale financial assets, net of tax		(6,365)	(2,014)
<b>Other comprehensive income for the year</b>		(6,365)	(2,014)
<b>Total comprehensive income for the year attributable to members of the entity</b>		<b>199,993</b>	<b>264,860</b>

The accompanying notes form part of these financial statements

# FINANCIAL STATEMENTS

## STATEMENT OF PROFIT OR LOSS AND OTHER COMPREHENSIVE INCOME FOR THE YEAR ENDED 30 JUNE 2015

		\$	\$
	NOTES	2015	2014
<b>CURRENT ASSETS</b>			
Cash and cash equivalents	5	1,394,324	1,966,569
Trade and other receivables	6	678,938	606,207
Financial assets	7	2,857,483	2,437,569
Prepaid expenses	8	112,599	96,829
<b>TOTAL CURRENT ASSETS</b>		<b>5,043,344</b>	<b>5,107,174</b>
<b>NON-CURRENT ASSETS</b>			
Prepaid expenses	9	696,667	736,667
Property, plant and equipment	10	117,698	30,525
<b>TOTAL NON-CURRENT ASSETS</b>		<b>814,365</b>	<b>767,192</b>
<b>TOTAL ASSETS</b>		<b>5,857,709</b>	<b>5,874,366</b>
<b>CURRENT LIABILITIES</b>			
Trade and other payables	11	671,075	840,348
Provisions	12	354,912	219,723
Deferred revenue	13	818,638	1,030,871
Borrowings	16(c)	5,545	–
<b>TOTAL CURRENT LIABILITIES</b>		<b>1,850,170</b>	<b>2,090,943</b>
<b>NON-CURRENT LIABILITIES</b>			
Provisions	14	11,214	5,950
Borrowings	16(c)	18,858	–
<b>TOTAL NON-CURRENT LIABILITIES</b>		<b>30,072</b>	<b>5,950</b>
<b>TOTAL LIABILITIES</b>		<b>1,880,242</b>	<b>2,096,892</b>
<b>NET ASSETS</b>		<b>3,977,467</b>	<b>3,777,474</b>
<b>EQUITY</b>			
Retained surplus		4,002,292	3,795,934
Financial assets reserve		(24,825)	(18,460)
<b>TOTAL EQUITY</b>		<b>3,977,467</b>	<b>3,777,474</b>

The accompanying notes form part of these financial statements



# FINANCIAL STATEMENTS

## STATEMENT OF PROFIT OR LOSS AND OTHER COMPREHENSIVE INCOME FOR THE YEAR ENDED 30 JUNE 2015

	Retained surplus	Financial asset reserve*	Total
Balance at 1 July 2013	3,529,060	(16,446)	3,512,614
Net profit for the year	266,874	-	266,874
Other comprehensive income	-	(2,014)	(2,014)
Balance at 30 June 2014	<b>3,795,934</b>	<b>(18,460)</b>	<b>3,777,474</b>
Balance at 1 July 2014	3,795,934	(18,460)	3,777,474
Net profit for the year	206,358	-	206,358
Other comprehensive income	-	(6,365)	(6,365)
Balance at 30 June 2015	<b>4,002,292</b>	<b>(24,825)</b>	<b>3,977,467</b>

\* Financial asset reserve records revaluation increments and decrements (that do not represent impairment write-downs) that relate to financial assets that are classified as available-for-sale.

The accompanying notes form part of these financial statements

# FINANCIAL STATEMENTS

## STATEMENT OF PROFIT OR LOSS AND OTHER COMPREHENSIVE INCOME FOR THE YEAR ENDED 30 JUNE 2015

	NOTES	\$ 2015	\$ 2014
<b>Cash flows from operating activities:</b>			
Receipts from customers/sponsors		4,171,506	4,061,770
Payments to suppliers and employees		(4,332,202)	(4,153,595)
Dividends and interest received		13,433	11,901
Dividends and interest paid		(567)	-
Net cash used in operating activities	15(b)	(147,830)	(79,924)
<b>Cash flows from investing activities:</b>			
Payments for purchases of PP&E		(79,969)	(14,611)
Payments for investments		(340,089)	-
Net cash provided used in investing activities		(420,058)	(14,611)
<b>Cash flows from financing activities:</b>			
Repayment of borrowings		(4,357)	-
Net cash used for financing activities		(4,357)	-
Net decrease in cash held		(572,245)	(94,535)
Cash and cash equivalents at beginning of year		1,966,569	2,061,104
Cash and cash equivalents at end of year	15(a)	1,394,324	1,966,569

The accompanying notes form part of these financial statements



# NOTES FOR THE FINANCIAL STATEMENTS

ROYAL QUEENSLAND LAWN TENNIS ASSOCIATION LTD  
ABN 60 009 713 544

FINANCIAL REPORT FOR THE YEAR ENDED 30 JUNE 2015

## 1. SUMMARY OF SIGNIFICANT ACCOUNTING POLICIES

The financial statements are for Royal Queensland Lawn Tennis Association Ltd ("the Company") as an individual entity incorporated and domiciled in Australia. Royal Queensland Lawn Tennis Association Ltd is a company limited by guarantee.

### **a) Basis of Preparation**

The Company applies Australian Accounting Standards – Reduced Disclosure Requirements as set out in AASB 1053: Application of Tiers of Australian Accounting Standards and AASB 2010-2: Amendments to Australian Accounting Standards arising from Reduced Disclosure Requirements.

The financial statements are general purpose financial statements that have been prepared in accordance with Australian Accounting Standards – Reduced Disclosure Requirements of the Australian Accounting Standards Board (AASB) and the Corporations Act 2001. The Company is a not-for-profit entity for financial reporting purposes under Australian Accounting Standards.

Australian Accounting Standards set out accounting policies that the AASB has concluded would result in financial statements containing relevant and reliable information about transactions, events and conditions. Material accounting policies adopted in the preparation of these financial statements are presented below and have been consistently applied unless stated otherwise.

The financial statements, except for the cash flow information, have been prepared on an accruals basis and are based on historical costs, modified, where applicable, by the measurement at fair value of selected non-current assets, financial assets and financial liabilities. The amounts presented in the financial statements have been rounded to the nearest dollar.

The financial statements were authorised for issue on 6th October 2015 by the directors of the Company.

### **b) Income Tax**

The Company is exempt from income tax under section 50-45 of the Income Tax Assessment Act 1997. Accordingly no provision for income taxes has been made in these financial statements.

### **c) Revenue recognition**

Revenue is measured at the fair value of the consideration received or receivable. Amounts disclosed as revenue are net of returns, trade allowances, rebates and amounts collected on behalf of third parties.

The Company recognises revenue when the amount of revenue can be reliably measured, it is probable that future economic benefits will flow to the entity and specific criteria have been met for each of the Company's activities as described below. The amount of revenue is not considered to be reliably measurable until all contingencies relating to the sale have been resolved. The Company bases its estimates on historical results, taking into consideration the type of customer, the type of transaction and the specifics of each arrangement.

# NOTES FOR THE FINANCIAL STATEMENTS

ROYAL QUEENSLAND LAWN TENNIS ASSOCIATION LTD  
ABN 60 009 713 544

FINANCIAL REPORT FOR THE YEAR ENDED 30 JUNE 2015

## 1. SUMMARY OF SIGNIFICANT ACCOUNTING POLICIES (continued)

Revenue is recognised for the major business activities as follows:

### *Grants*

Grant revenue is recognised in the statement of comprehensive income when the entity obtains control of the grant and it is probable that the economic benefits gained from the grant will flow to the entity and the amount of the grant can be measured reliably.

If conditions are attached to the grant which must be satisfied before it is eligible to receive the contribution, the recognition of the grant as revenue will be deferred until those conditions are satisfied.

When grant revenue is received whereby the entity incurs an obligation to deliver economic value directly back to the contributor, this is considered a reciprocal transaction and the grant revenue is recognised in the statement of financial position as a liability until the service has been delivered to the contributor, otherwise the grant is recognised as income on receipt.

Grants from the government and Tennis Australia are recognised at their fair value where there is a reasonable assurance that the grant will be received and the Company will comply with all attached conditions.

Government grants relating to costs are deferred and recognised in the statement of profit or loss and other comprehensive income over the period necessary to match them with the costs that they are intended to compensate.

### *Registration fees*

Registration fee revenue is received annually over calendar years, and is recognised in the period it is earned.

### *Interest Revenue*

Interest revenue is recognised using the effective interest rate method, which for floating rate financial assets is the rate inherent in the instrument.

### *Dividends*

Dividends are recognised as revenue when the right to receive payment is established.

### *Other Revenue*

Other revenue comprises revenue earned from the provision of products or services and is recognised when the goods are provided, or when the fee in respect of services is receivable.

All revenue is stated net of the amount of goods and services tax (GST).

### **d) Cash and cash equivalents**

Cash includes cash on hand and deposits with an original maturity of three months or less.



# NOTES FOR THE FINANCIAL STATEMENTS

ROYAL QUEENSLAND LAWN TENNIS ASSOCIATION LTD  
ABN 60 009 713 544

FINANCIAL REPORT FOR THE YEAR ENDED 30 JUNE 2015

## 1. SUMMARY OF SIGNIFICANT ACCOUNTING POLICIES (continued)

### e) Financial Instruments

#### Initial recognition and measurement

Financial assets and financial liabilities are recognised when the entity becomes a party to the contractual provisions to the instrument. For financial assets, this is equivalent to the date that the Company commits itself to either purchase or sell the asset (ie trade date accounting is adopted). Financial instruments are initially measured at fair value plus transaction costs except where the instrument is classified 'at fair value through profit or loss' in which case transaction costs are expensed to profit or loss immediately.

#### Classification and subsequent measurement

Financial instruments are subsequently measured at either fair value, amortised cost using the effective interest rate method or cost. Fair value represents the amount for which an asset could be exchanged or a liability settled, between knowledgeable, willing parties. Where available, quoted prices in an active market are used to determine fair value. In other circumstances, valuation techniques are adopted.

Amortised cost is calculated as:

- (i) the amount at which the financial asset or financial liability is measured at initial recognition;
- (ii) less principal repayments;
- (iii) plus or minus the cumulative amortisation of the difference, if any, between the amount initially recognised and the maturity amount calculated using the *effective interest method*; and
- (iv) less any reduction for impairment.

The effective interest method is used to allocate interest income or interest expense over the relevant period and is equivalent to the rate that exactly discounts estimated future cash payments or receipts (including fees, transaction costs and other premiums or discounts) through the expected life (or when this cannot be reliably predicted, the contractual term) of the financial instrument to the net carrying amount of the financial asset or financial liability. Revisions to expected future net cash flows will necessitate an adjustment to the carrying value with a consequential recognition of an income or expense in profit or loss.

#### (i) Financial assets at fair value through profit or loss

Financial assets are classified at 'fair value through profit or loss' when they are held for trading for the purpose of short-term profit taking, or where they are derivatives not held for hedging purposes, or when they are designated as such to avoid an accounting mismatch or to enable performance evaluation where a group of financial assets is managed by key management personnel on a fair value basis in accordance with a documented risk management or investment strategy. Such assets are subsequently measured at fair value with changes in carrying value being included in profit or loss.

# NOTES FOR THE FINANCIAL STATEMENTS

ROYAL QUEENSLAND LAWN TENNIS ASSOCIATION LTD  
ABN 60 009 713 544

FINANCIAL REPORT FOR THE YEAR ENDED 30 JUNE 2015

## 1. SUMMARY OF SIGNIFICANT ACCOUNTING POLICIES (continued)

### (ii) Loans and receivables

Loans and receivables are non-derivative financial assets with fixed or determinable payments that are not quoted in an active market and are subsequently measured at amortised cost.

### (iii) Held-to-maturity investments

Held-to-maturity investments are non-derivative financial assets that have fixed maturities and fixed or determinable payments, and it is the entity's intention to hold these investments to maturity. They are subsequently measured at amortised cost.

### (iv) Available-for-sale financial assets

Available-for-sale financial assets are non-derivative financial assets that are either not capable of being classified into other categories of financial assets due to their nature, or they are designated as such by management. They comprise investments in the equity of other entities where there is neither a fixed maturity nor fixed or determinable payments.

Available-for-sale financial assets are included in non-current assets, except for those which are expected to be disposed of within 12 months after the end of the reporting period.

They are subsequently measured at fair value with changes in such fair value (ie gains or losses) recognised in other comprehensive income (except for impairment losses and foreign exchange gains and losses). When the financial asset is derecognised, the cumulative gain or loss pertaining to that asset previously recognised in other comprehensive income is reclassified into profit or loss.

### (v) Financial liabilities

Non-derivative financial liabilities (excluding financial guarantees) are subsequently measured at amortised cost.

### Fair value

Fair value is determined based on current bid prices for all quoted investments. Valuation techniques are applied to determine the fair value for all unlisted securities, including recent arm's length transactions, reference to similar instruments and option pricing models.

### Impairment

At the end of each reporting period, the entity assesses whether there is objective evidence that a financial instrument has been impaired. In the case of available-for-sale financial instruments, a prolonged decline in the value of the instrument is considered to determine whether an impairment has arisen. Impairment losses are recognised in the statement of comprehensive income.

### Derecognition

Financial assets are derecognised where the contractual rights to receipt of cash flows expires or the asset is transferred to another party whereby the entity no longer has any significant continuing involvement in the risks and benefits associated with the asset. Financial liabilities are derecognised where the related obligations are either discharged, cancelled or expired. The difference between the carrying value of the financial liability, which is extinguished or transferred to another party and the fair value of consideration paid, including the transfer of non-cash assets or liabilities assumed, is recognised in profit or loss.



# NOTES FOR THE FINANCIAL STATEMENTS

ROYAL QUEENSLAND LAWN TENNIS ASSOCIATION LTD  
ABN 60 009 713 544

FINANCIAL REPORT FOR THE YEAR ENDED 30 JUNE 2015

## 1. SUMMARY OF SIGNIFICANT ACCOUNTING POLICIES (continued)

### f) Plant Equipment

Plant and equipment are measured on the cost basis less depreciation and impairment losses.

The carrying amount of plant and equipment is reviewed annually by directors to ensure it is not in excess of the recoverable amount from these assets. The recoverable amount is assessed on the basis of the expected net cash flows that will be received from the assets employment and subsequent disposal. The expected net cash flows have been discounted to their present values in determining recoverable amounts.

Plant and equipment that have been contributed at no cost, or for nominal cost are valued and recognised at the fair value of the asset at the date it is acquired.

### Depreciation

The depreciable amount of all fixed assets including buildings and capitalised lease assets, but excluding freehold land, is depreciated on a straight line basis over the asset's useful life to the entity commencing from the time the asset is held ready for use. Leasehold improvements are depreciated over the shorter of either the unexpired period of the lease or the estimated useful lives of the improvements.

The depreciation rates used for each class of depreciable assets are:

Class of Fixed Asset	Depreciation Rate
• Plant and equipment	10% - 33%

### g) Leases

Operating leases are leases under which the lessors effectively retain substantially all of the risks and benefits of ownership of lease items. Payments under operating leases are charged as expenses on a straight-line basis over the lease term.

Leases of fixed assets, where substantially all the risks and benefits incidental to the ownership of the asset (but not the legal ownership) are transferred to the entity, are classified as finance leases.

Finance leases are capitalised, recognising an asset and a liability equal to the present value of the minimum lease payments, including any guaranteed residual values. Leased assets are depreciated on a straight-line basis over their estimated useful lives where it is likely that the entity will obtain ownership of the asset. Lease payments are allocated between the reduction of the lease liability and the lease interest expense for the period.

### h) Employee entitlements

Provision is made for the Company's liability for employee benefits arising from services rendered by employees to the end of the reporting period. Employee benefits that are expected to be settled within one year have been measured at the amounts expected to be paid when the liability is settled. Employee benefits payable later than one year have been measured at the present value of the estimated future cash outflows to be made for those benefits. In determining the liability, consideration is given to employee wage increases and the probability that the employee may not satisfy vesting requirements. Those cash outflows are discounted using market yields on national government bonds with terms to maturity that match the expected timing of cash flows.

# NOTES FOR THE FINANCIAL STATEMENTS

ROYAL QUEENSLAND LAWN TENNIS ASSOCIATION LTD  
ABN 60 009 713 544

FINANCIAL REPORT FOR THE YEAR ENDED 30 JUNE 2015

## 1. SUMMARY OF SIGNIFICANT ACCOUNTING POLICIES (continued)

### i) Trade and Other Payables

Trade and other payables represent the liability outstanding at the end of the reporting period for goods and services received by the Company during the reporting period which remain unpaid. The balance is recognised as a current liability with the amounts normally paid within 30 days of recognition of the liability.

### j) Comparative Figures

Where required by Accounting Standards, comparative figures have been adjusted to conform to changes in presentation for the current financial year.

When an entity applies an accounting policy retrospectively, makes a retrospective restatement or reclassifies items in its financial statements, which materially impact the financial performance or position presented, a statement of financial position as at the beginning of the earliest comparative period must be disclosed.

### k) Goods and Services Tax (GST)

Revenues, expenses and assets are recognised net of the amount of GST, except where the amount of GST incurred is not recoverable from the Tax Office. In these circumstances, the GST is recognised as part of the cost of acquisition of the asset or as part of an item of the expense. Receivables and payables in the balance sheet are shown inclusive of GST.

Cash flows are presented in the statement of cash flows on a gross basis, except for the GST component of investing and financing activities, which are disclosed as operating cash flows.

### l) Impairment of Assets

At the end of each reporting period, the entity reviews the carrying values of its tangible and intangible assets to determine whether there is any indication that those assets have been impaired. If such an indication exists, the recoverable amount of the asset, being the higher of the asset's fair value less costs to sell and value in use, is compared to the asset's carrying value. Any excess of the asset's carrying value over its recoverable amount is expensed to the statement of comprehensive income.

Where the future economic benefits of the asset are not primarily dependent upon the asset's ability to generate net cash inflows and when the entity would, if deprived of the asset, replace its remaining future economic benefits, value in use is determined as the depreciated replacement cost of an asset.

Where it is not possible to estimate the recoverable amount of an assets class, the entity estimates the recoverable amount of the cash-generating unit to which the class of assets belong.

Where an impairment loss on a revalued asset is identified, this is debited against the revaluation surplus in respect of the same class of asset to the extent that the impairment loss does not exceed the amount in the revaluation surplus for that same class of asset.

### m) New and Amended Accounting Policies

During the current year, the Company has reviewed the new and revised mandatory Australian Accounting Standards applicable to entities reporting under the Corporations Act 2001 and the Directors believe that none of the new and revised standards are applicable to the Company.



# NOTES FOR THE FINANCIAL STATEMENTS

ROYAL QUEENSLAND LAWN TENNIS ASSOCIATION LTD  
ABN 60 009 713 544

FINANCIAL REPORT FOR THE YEAR ENDED 30 JUNE 2015

## 1. SUMMARY OF SIGNIFICANT ACCOUNTING POLICIES (continued)

### n) New Accounting Standards for Application in Future Periods

The AASB has issued a number of new and amended Accounting Standards and Interpretations that have mandatory application dates for future reporting periods, some of which are relevant to the Company. The Company has decided not to early adopt any of the new and amended pronouncements. The Company's assessment of the new and amended pronouncements that are relevant to the Company but applicable in future reporting periods is set out below:

AASB 9: Financial Instruments and associated Amending Standards (applicable to annual reporting periods beginning on or after 1 January 2018).

The Standard will be applicable retrospectively and includes revised requirements for the classification and measurement of financial instruments, revised recognition and derecognition requirements for financial instruments and simplified requirements for hedge accounting.

The directors do not anticipate that the adoption of AASB 9 will have a significant impact on the Company's financial statements.

AASB 15: Revenue from Contracts with Customers (applicable to annual reporting periods commencing on or after 1 January 2017).

When effective, this Standard will replace the current accounting requirements applicable to revenue with a single, principles-based model. Except for a limited number of exceptions, including leases, the new revenue model in AASB 15 will apply to all contracts with customers as well as non-monetary exchanges between entities in the same line of business to facilitate sales to customers and potential customers.

The core principle of the Standard is that an entity will recognise revenue to depict the transfer of promised goods or services to customers in an amount that reflects the consideration to which the entity expects to be entitled in exchange for the goods or services. To achieve this objective, AASB 15 provides the following five-step process:

- identify the contract(s) with a customer;
- identify the performance obligations in the contract(s);
- determine the transaction price;
- allocate the transaction price to the performance obligations in the contract(s); and
- recognise revenue when (or as) the performance obligations are satisfied.

This Standard will require retrospective restatement, as well as enhanced disclosures regarding revenue.

Although the directors anticipate that the adoption of AASB 15 may have an impact on the Company's financial statements, it is impracticable at this stage to provide a reasonable estimate of such impact.

# NOTES FOR THE FINANCIAL STATEMENTS

ROYAL QUEENSLAND LAWN TENNIS ASSOCIATION LTD  
ABN 60 009 713 544

FINANCIAL REPORT FOR THE YEAR ENDED 30 JUNE 2015

## 1. SUMMARY OF SIGNIFICANT ACCOUNTING POLICIES (continued)

### o) Economic Dependency

The Company receives grant funding from the Queensland State Government and Tennis Australia Limited that forms an integral part of the revenue used by the Company to achieve its short and long term objectives. At the date of this report the Board of Directors has no reason to believe the Queensland State Government and Tennis Australia Limited will not continue to support the Company.

## 2. REVENUE

	\$	\$
	2015	2014
Operating activities:		
Annual affiliation and registration fees	566,948	493,059
Tournaments and activities receipts, sponsorships, subsidies	3,095,655	3,331,354
Interest and Investment income	116,882	110,539
	<b>3,779,485</b>	<b>3,934,952</b>

## 3. EXPENSES

Surplus before tax includes the following specific expenses:		
Expenses:		
Depreciation of non-current assets		
- Plant and equipment	21,555	9,790
Rental expenses relating to operating leases	103,091	129,588
Employee benefit expenses	1,439,098	1,376,194
Bad and doubtful debts expense	9,767	58,251

## 4. REVENUE/EXPENSES FROM OTHER ACTIVITIES

<b>Income</b>		
Regional Tennis Centres	215,210	186,330
	<b>215,210</b>	<b>186,330</b>
<b>Expenses</b>		
Regional Tennis Centres	349,550	260,479
	<b>349,550</b>	<b>260,479</b>

## 5. CASH AND CASH EQUIVALENTS

Cash on hand	426	500
Cash at bank	1,394,324	1,966,069
	<b>1,394,324</b>	<b>1,966,569</b>



# NOTES FOR THE FINANCIAL STATEMENTS

ROYAL QUEENSLAND LAWN TENNIS ASSOCIATION LTD  
ABN 60 009 713 544

FINANCIAL REPORT FOR THE YEAR ENDED 30 JUNE 2015

## 6. TRADE AND OTHER RECEIVABLE

	\$	\$
	2015	2014
Trade debtors	534,796	466,540
Sundry debtors	144,142	139,667
	<b>678,938</b>	<b>606,207</b>

Due to the short term nature of these receivables, their carrying amount is assumed to approximate their fair value. Trade debtors above is shown net of a provision for impairment of \$27,384 (2014: \$57,322)

## 7. FINANCIAL ASSETS

Available-for-sale financial assets:		
Investments at fair value		
- Fixed interest securities	2,854,467	2,434,084
- Managed funds	3,016	3,485
	<b>2,857,483</b>	<b>2,437,569</b>

## 8. PREPAID EXPENSES - CURRENT

Prepayments	72,599	56,829
Prepayments - State office lease	40,000	40,000
	<b>112,599</b>	<b>96,829</b>

## 9. PREPAID EXPENSES - NON CURRENT

Prepayments - State office lease	696,667	736,667
	<b>696,667</b>	<b>736,667</b>

# NOTES FOR THE FINANCIAL STATEMENTS

ROYAL QUEENSLAND LAWN TENNIS ASSOCIATION LTD  
ABN 60 009 713 544

FINANCIAL REPORT FOR THE YEAR ENDED 30 JUNE 2015

## 10. PLANT AND EQUIPMENT

	\$	\$
	2015	2014
<b>Plant and Equipment</b>		
Cost	431,356	322,628
Accumulated depreciation	(313,658)	(292,103)
	<b>117,698</b>	<b>30,525</b>

Reconciliations of the carrying amounts of each class of property, plant and equipment at the beginning and end of the current financial period as set out below:

Opening carrying amount	30,525	25,704
Additions	108,728	14,611
Disposals	-	-
Depreciation	(21,555)	(9,790)
Closing carrying amount	<b>117,698</b>	<b>30,525</b>

## 11. TRADE AND OTHER PAYABLES

Trade creditors	272,399	306,680
Sundry creditors and accruals	398,676	533,668
	<b>671,075</b>	<b>840,348</b>

Due to the short term nature of these payables, their carrying amount is assumed to approximate their fair value.



# NOTES FOR THE FINANCIAL STATEMENTS

ROYAL QUEENSLAND LAWN TENNIS ASSOCIATION LTD  
ABN 60 009 713 544

FINANCIAL REPORT FOR THE YEAR ENDED 30 JUNE 2015

## 12. CURRENT LIABILITIES - PROVISIONS

	\$	\$
	2015	2014
Provision for annual leave	112,450	101,005
Provision for long service leave	92,462	118,718
Provision for TennisConnect	150,000	-
	<b>354,912</b>	<b>219,723</b>
<b>Analysis of provisions Employee entitlements</b>		
Opening balance	225,673	226,050
Additional provision raised	97,209	103,160
Amounts used	(106,756)	(103,537)
Closing balance	<b>216,126</b>	<b>225,673</b>
<b>TennisConnect</b>		
Opening balance	-	-
Additional provision raised	150,000	-
Amounts used	-	-
Closing balance	<b>150,000</b>	-

## 13. DEFERRED REVENUE

Income Received in Advance	389,027	421,483
Deferred Foundation Funds	187,348	199,826
Deferred RTFP Funds	242,263	409,562
	<b>818,638</b>	<b>1,030,871</b>

## 14. NON-CURRENT LIABILITIES – PROVISIONS

Provision for long service leave	5,950	21,306
	<b>5,950</b>	<b>21,306</b>

## 15. CASH FLOW INFORMATION

### (a) Reconciliation of Cash

Cash at the end of the financial period shown in the statement of cash flows is reconciled to the related items in the balance sheet as follows:

Cash (Note 5)	1,394,324	1,966,569
---------------	-----------	-----------

# NOTES FOR THE FINANCIAL STATEMENTS

ROYAL QUEENSLAND LAWN TENNIS ASSOCIATION LTD  
ABN 60 009 713 544

FINANCIAL REPORT FOR THE YEAR ENDED 30 JUNE 2015

## 15. CASH FLOW INFORMATION (continued)

### (b) Reconciliation of the net profit after tax to the net cash flows from operations:

	\$	\$
	2015	2014
Profit after tax	206,358	266,874
<i>Non-cash items in profit or loss:</i>		
Depreciation	21,555	0
Net income on investments (re-invested)	(104,324)	0
Realised loss on investments	1,008	0
<i>Changes in assets and liabilities:</i>		
Decrease/(increase) in receivables	58,918	(81,812)
Decrease in prepayments	24,230	35,676
(Decrease)/increase in payables and accruals	(283,795)	254,873
Increase/(decrease) in provisions	140,453	(377)
(Decrease) in deferred income	(212,233)	(468,250)
<b>Net cash (used) in Operating Activities</b>	<b>(147,830)</b>	<b>(79,924)</b>

## 16. CAPITAL AND LEASING COMMITMENTS

### (a) Operating Lease Commitments (Premises)

The Company is currently under a 25 year lease agreement in relation to the office premises at the Queensland Tennis Centre, with no further rent payable over the period of the lease. The total rent of \$1,000,000 for the period of the lease was prepaid in 2009 and is being expensed over the period of the lease on a straight line basis (Refer to notes 8 and 9).

### (b) Operating Lease Commitments (Other)

Non-cancellable operating lease rentals are payable as follows:

Less than one year	2,880	2,880
Between one and five years	480	3,360
More than five years	-	-
	<b>3,360</b>	<b>6,240</b>

### (c) Finance Lease Commitments

Current	5,545	-
Non-current	18,858	-
	<b>24,403</b>	-

## 17. MEMBERS GUARANTEE

The Company is a company limited by guarantee. There is no authorised or issued share capital. If the Company is wound up, the liability of the members is limited to \$10 each (2014: \$10). As at 30 June 2015 the Company had 18 members (2014: 19).

# NOTES FOR THE FINANCIAL STATEMENTS

ROYAL QUEENSLAND LAWN TENNIS ASSOCIATION LTD  
ABN 60 009 713 544

FINANCIAL REPORT FOR THE YEAR ENDED 30 JUNE 2015

## 18. AUDITOR'S REMUNERATION

	\$	\$
	2015	2014
PKF Hacketts Audit		
Audit of the financial report	23,000	25,900
	<b>23,000</b>	<b>25,900</b>

The auditors receive no other benefits from the Company.

## 19. REMUNERATION OF DIRECTORS

There was no income paid and payable, or otherwise made available in respect of the financial year, to all Directors of Royal Queensland Lawn Tennis Association Ltd, directly or indirectly, from the entity or any related party.

There were 8 Directors (2014: 8) in office during the year. The Directors received no remuneration for the services they performed during their time in office.

## 20. RELATED PARTY DISCLOSURES

The names of each person holding a position of Director of Royal Queensland Lawn Tennis Association Ltd at any time during the financial year are:

K Laffey, L Taylor, D Kingston, R Rolfe, M Whitbread, P Robertson, A Harris and M Bloomfield.

### Transactions with related parties

Mark Bloomfield is the owner of TennisGear Management Pty Ltd. The following transactions between the Company and TennisGear occurred during the financial year:

<i>Sales and purchases of goods and services</i>		
Purchase of goods or services from entity controlled by related party	21,129	34,292
Sale of goods or services to entity controlled by related party	11,052	-

Services purchased from the entity controlled by the related party included prizemoney, entry fees and court hire for tournaments.

Services sold to the entity controlled by the related party included sponsorship and tournament entry fees.

### Outstanding balances arising from sales/purchases of goods and services

The following balances are outstanding at the end of the reporting period in relation to transactions with TennisGear Management Pty Ltd:

Receivables from entity controlled by related party	5,361	-
Payables to entity controlled by related party	46	14,756

# NOTES FOR THE FINANCIAL STATEMENTS

ROYAL QUEENSLAND LAWN TENNIS ASSOCIATION LTD  
ABN 60 009 713 544

FINANCIAL REPORT FOR THE YEAR ENDED 30 JUNE 2015

## 20. RELATED PARTY DISCLOSURES (continued)

### Transactions with related parties

Murray Whitbread is the owner of Murray Whitbread Enterprises. The following transactions between the Company and Murray Whitbread occurred during the financial year:

	\$	\$
	2015	2014
<i>Sales and purchases of goods and services</i>		
Purchase of goods or services from entity controlled by related party	4,110	-
Sale of goods or services to entity controlled by related party	-	-

Services purchased from the entity controlled by the related party included administrative, development and promotional work in lieu of the services normally provided by a Community Tennis Officer where there was a vacancy in this role.

### Transactions with related parties

The following transactions between the Company and Glenn Vickery occurred during the financial year:

<i>Sales and purchases of goods and services</i>		
Purchase of goods or services from entity controlled by related party	4,860	-
Sale of goods or services to entity controlled by related party	-	-

Services purchased from the entity controlled by the related party included administrative, development and promotional work in lieu of the services normally provided by a Community Tennis Officer where there was a vacancy in this role.

In addition to the transactions noted, the Company also had the following transactions with related parties during the year:

- Reimbursement arrangements with the related party to reimburse them for expenditure that they incurred while acting on behalf of the company.
- Sponsorships provided by the related party to the Company.

### Terms and conditions

All transactions were made on normal commercial terms and conditions that are available to third parties.

There were no amounts of remuneration received or due and receivable by the Directors from the Company.



# NOTES FOR THE FINANCIAL STATEMENTS

ROYAL QUEENSLAND LAWN TENNIS ASSOCIATION LTD  
ABN 60 009 713 544

FINANCIAL REPORT FOR THE YEAR ENDED 30 JUNE 2015

## 20. RELATED PARTY DISCLOSURES (continued)

### Key management personnel compensation

Key management personnel are:

Cameron Pearson (Chief Executive Officer), Travis Atkinson (Head of Tennis, resigned in September 2014), Michael Blomer (Facilities Development Manager), Matt Richards (Head of Participation), Elia Hill (Partnerships Executive) and Di MacDonald (Business Services Manager since November 2014).

Tennis Australia makes a contribution toward Key Management Personnel remuneration totalling \$131,785 (2014: \$190,323). Therefore the net cost to Tennis Queensland is \$537,883 (2014: \$521,132).

	\$	\$	\$	\$	\$	\$
	Salary	Super	Bonus	Non-Cash Benefits	Long Service Leave Paid	Total
<b>2015</b>						
Total compensation	556,216	52,179	26,631	-	34,642	669,668
<b>2014</b>						
Total compensation	614,368	54,793	42,294	-	-	711,455

## 21. EVENTS AFTER THE REPORTING PERIOD

No matters or circumstances have arisen since the end of the financial year which significantly affected or may significantly affect the operations of the company, the results of those operations, or the state of affairs of the company in future financial years.

## 22. ENTITY DETAILS

The registered office of the Company is:

Level 9  
123 Albert Street  
Brisbane  
QLD 4000

The principal place of business is:

190 King Arthur Terrace  
Tennyson  
QLD 4105

PKF Hacketts



### DISCLAIMER

The additional information presented on the following pages is in accordance with the books and records of the Royal Queensland Lawn Tennis Association Ltd, which have been subjected to the auditing procedures applied in our statutory audit of the company for the year ended 30 June 2015. It will be appreciated that our audit did not cover all details of the additional information. Accordingly, we do not express an opinion on such financial information and no warranty of accuracy or reliability is given.

In accordance with our Firm policy, we advise that neither the Firm nor any member or employee of the Firm undertakes responsibility arising in any way whatsoever to any person (other than the company) in respect of such information, including any errors or omissions therein, arising through negligence or otherwise however caused.

PKF Hacketts

PKF Hacketts Audit

Shaun Lindemann  
Partner

Brisbane, 6 October 2015

PKF Hacketts Audit  
ABN 33 873 151 346

Level 6, 10 Eagle Street, Brisbane QLD 4000  
GPO Box 1568, Brisbane QLD 4001  
p +61 7 3839 9733  
f +61 7 3832 1407

8 East Street, PO Box 862  
Rockhampton QLD 4700  
p +61 7 4927 2744  
f +61 7 4927 4317

69

Liability limited by a scheme approved under Professional Standards Legislation. PKF International Limited administers a network of legally independent firms which carry on separate businesses under the PKF Name. PKF International Limited is not responsible for the acts or omissions of individual member firms of the network. For office locations visit [www.pkf.com.au](http://www.pkf.com.au)

# INCOME STATEMENT

DETAILED INCOME STATEMENT FOR THE YEAR ENDED 30 JUNE 2015

	\$	\$
	2015	2014
<b>OPERATING REVENUE</b>		
Affiliation fees	563,003	489,474
Ball sales	30,863	18,021
Court hire	78,880	101,332
Entry fees	129,903	144,109
Foundation revenue	4,000	6,000
Government grants	410,000	392,472
Interest income	8,382	4,600
Investment income	108,500	105,939
Player contributions	15,423	9,227
Player registrations	3,945	3,585
Project management income	56,321	25,156
Rental income	175,000	173,924
Room hire	109,102	166,274
Sanction fees	64,328	60,460
Sponsorship	150,790	137,208
Sundry income	8,105	217,788
TA grants	1,880,294	1,598,706
Ticket sales	28,800	20,847
TQ's interim management of QTC	-	259,830
<b>TOTAL REVENUE</b>	<b>3,825,639</b>	<b>3,934,954</b>
<b>LESS OPERATING EXPENSES</b>		
Advertising and promotions	72,337	32,909
Artwork, design and signage	74,670	-
Audit fees	20,720	25,869
Bad debts	9,767	58,251
Ball purchases	28,538	26,540
Bank charges	5,547	7,288
Cleaning	47,497	55,781
Club grants	134,124	30,112
Computer expenses	1,682	4,654
Consultancy	10,926	13,409
Council rates	20,612	60,048
Council rates - water	(52,716)	-
Court hire	105,184	86,988
Court resurfacing	20,870	78,263
Depreciation	21,555	9,790
Development initiatives	130,393	137,527
Electricity	115,235	80,856
FBT	16,858	19,218
Foundation expenses	4,000	6,000
Functions	77,453	88,734

# INCOME STATEMENT

DETAILED INCOME STATEMENT FOR THE YEAR ENDED 30 JUNE 2015

	\$	\$
	2015	2014
<b>OPERATING EXPENSES cont.</b>		
Insurance inc. Workcover	84,580	82,501
Legal fees	24,981	83,080
Loss on sale of fixed assets	1,008	1,064
Memorabilia	5,639	5,657
National Academy	30,766	36,704
Payroll	1,516,022	1,492,565
Postage and courier	14,150	33,960
Printing and stationery	54,793	55,998
Prizemoney and trophies	220,079	161,853
Regional Initiative Program	61,796	59,997
Rent	103,091	129,588
Repairs and maintenance	81,617	63,782
Security	22,214	28,356
Sponsor servicing	25,639	29,540
Staff amenities and training	12,387	4,159
State Facility Planning	-	49,449
Subscriptions	2,572	2,890
Subsidies	49,100	50,338
Sundry expenses	2,117	9,415
Telephone	35,015	41,171
Ticket purchases	16,867	13,252
Tournament expenses	61,084	40,488
Travel and accommodation	194,169	219,298
TQ's interim management of QTC	-	76,587
<b>TOTAL OPERATING EXPENSES</b>	<b>3,484,940</b>	<b>3,593,930</b>
<b>NET SURPLUS / (DEFICIT)</b>	<b>340,699</b>	<b>341,024</b>
<b>PLUS REVENUE FROM OTHER ACTIVITIES</b>		
Regional Centres	215,210	186,330
<b>LESS EXPENSES FOR OTHER ACTIVITIES</b>		
Regional Centres	(349,551)	(260,479)
<b>NET SURPLUS / (DEFICIT) AFTER OTHER ACTIVITIES</b>	<b>206,358</b>	<b>266,874</b>



Royal Queensland Lawn Tennis Association trading as

## **TENNIS QUEENSLAND**

190 King Arthur Terrace

Tennyson, QLD 4105

P: +61 7 3120 7900

E: [tennisqueenslandinfo@tennis.com.au](mailto:tennisqueenslandinfo@tennis.com.au)

W: [tennis.com.au/qld](http://tennis.com.au/qld)

F: [/tennisqueensland](http://tennisqueensland)

T: [@tennisqld](https://www.instagram.com/tennisqld)