

Caterpillar Burnie International

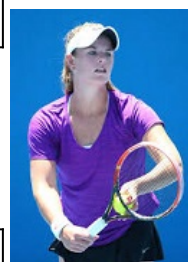
ITF World Tennis Tour

WS - SINGLES MAIN DRAW



Week of 21 JAN 2019 City, Country Burnie, AUS Prize Money US\$ 60000 Tour. Key W-ITF-AUS-02A-2019 ITF Supervisor Luiz Parada

St.	Rank	Cnty	Round 1	Round 2	Quarterfinals	Semifinals	Final
1	81	ESP	SORRIBES TORMO, S [1]				
2	Q	299	ARG	PODOROSKA, Nadia	SORRIBES TORMO, S [1] 7-5 6-1		
3	Q	451	USA	ELIE, Jennifer		SORRIBES TORMO, S [1] 2-6 6-3 7-5	
4		175	GBR	SWAN, Katie	SWAN, Katie 6-1 6-1		
5	WC	225	AUS	HIVES, Zoe		SORRIBES TORMO, S [1] 6-0 6-2	
6		171	KAZ	RYBAKINA, Elena	HIVES, Zoe 7-6(1) 6-4		
7		195	BRA	HADDAD MAIA, Beatriz		GARCIA-PEREZ, G [7] 5-7 6-2 7-6(5)	
8		144	ESP	GARCIA-PEREZ, G [7]	GARCIA-PEREZ, G [7] 6-1 6-4		
9		116	UKR	KOSTYUK, Marta [3]			BADOSA GIBERT, P [6] 6-4 6-1
10	Q	398	TPE	CHANG, Kai-Chen	KOSTYUK, Marta [3] 6-3 6-4		
11		209	AUS	PEREZ, Ellen		WANG, Xiyu 6-4 6-1	
12		206	CHN	WANG, Xiyu	WANG, Xiyu 4-6 6-3 7-5		
13		182	GBR	TAYLOR, Gabriella		BADOSA GIBERT, P [6] 3-6 6-3 6-2	
14		156	ROU	BARA, Irina Maria	BARA, Irina Maria 6-2 2-0 Ret.		
15	Q	656	AUS	DA SILVA FICK, G		BADOSA GIBERT, P [6] 6-0 6-7(4) 6-2	
16		141	ESP	BADOSA GIBERT, P [6]	BADOSA GIBERT, P [6] 6-4 6-2		
17		151	BUL	TOMOVA, V [8]			WOOLCOCK, Belinda 7-6(3) 7-6(4)
18		210	BEL	ZANEVSKA, Maryna	TOMOVA, V [8] 6-4 7-5		
19	Q	774	AUS	WOOLCOCK, Belinda		WOOLCOCK, Belinda 6-4 3-6 6-4	
20	WC	313	AUS	BAINS, Naiktha	WOOLCOCK, Belinda 6-3 7-6(3)		
21	Q	355	AUS	BAI, Alison		WOOLCOCK, Belinda 6-1 6-4	
22	WC	233	AUS	CABRERA, Lizette	CABRERA, Lizette 6-3 6-3		
23	WC	191	AUS	AIAVA, Destanee		CABRERA, Lizette 6-4 2-6 7-6(5)	
24		124	HUN	STOLLAR, Fanni [4]	AIAVA, Destanee 6-5 Ret.		
25		135	RUS	KHROMACHEVA, I [5]			WOOLCOCK, Belinda 6-3 1-6 6-3
26		190	USA	MUHAMMAD, Asia	MUHAMMAD, Asia 6-4 7-5		
27		164	GEO	GORGODZE, Ekaterine		GORGODZE, Ekaterine 6-2 6-4	
28		213	GER	ZAJA, Anna	GORGODZE, Ekaterine 6-1 3-6 6-3		
29		224	AUS	FOURLIS, Jaimee		GORGODZE, Ekaterine 6-4 5-7 6-1	
30		184	ESP	SOLER-ESPINOSA, S	SOLER-ESPINOSA, S 7-5 6-2		
31		172	AUS	RODIONOVA, Arina		SOLER-ESPINOSA, S 7-5 3-6 6-2	
32		115	JPN	HIBINO, Nao [2]	RODIONOVA, Arina 6-3 7-5		



www.itftennis.com

	# Seeded Players	# Lucky Losers	Replacing	Draw date/time: 21 JAN 2019 14:39
	1 SORRIBES TORMO, Sara 2 HIBINO, Nao 3 KOSTYUK, Marta 4 STOLLAR, Fanni 5 KHROMACHEVA, Irina 6 BADOSA GIBERT, Paula 7 GARCIA-PEREZ, Georgina 8 TOMOVA, Viktoriya			Last Direct Acceptance ZANEVSKA, Maryna (BEL)
		# Special Ranking: Name		Player representatives Ellen PEREZ Beatriz HADDAD MAIA
				Signature Luiz Parada