



TENNIS VICTORIA
**ANNUAL
REPORT**
2014/15



CONTENTS

PRESIDENT'S REPORT	2
TREASURER'S REPORT	3
TENNIS VICTORIA CEO REPORT	4
TENNIS AUSTRALIA CEO REPORT	6
THE TEAM AT TENNIS VICTORIA	7
COMMUNITY TENNIS REPORT	8
TENNIS OPERATIONS REPORT	14
GOVERNMENT RELATIONS AND PLACES TO PLAY REPORT	17
MARKETING AND COMMUNICATIONS REPORT	19
FINANCIAL REPORT	20
BOARD AND COMMITTEES	31
AWARDS	32
STATE RANKINGS	35
AUSTRALIAN AND STATE REPRESENTATION	36
RESULTS	37
SUPPORTERS	45

Tennis Victoria's purpose is to make tennis a part of every Victorian's life

Victorian Tennis...



Fun and that's number one
Fitness promoting a healthy Victoria
Friendships all over the state
Families playing together
For everybody no matter what gender, background or standard
Forever from the youngest to the oldest of ages
Far reaching Victoria is over 40% of Australian tennis - it is a very big grassroots community and we are strongest together
Fair play both on and off the court

The Tennis Victoria Way

The National Tennis values of **teamwork**, **humility**, **loyalty** and **excellence** are underpinned by our six collective behaviours to achieve success which are:

- We **T**ake responsibility
- We **E**njoy our work
- There are **N**o soft excuses
- We "k**N**ow our stuff"
- We are **I**nnovative and inclusive
- We **S**peak up, speak straight

Tennis Victoria Strategic Plan to 2016



With successful achievement across these to be underpinned by:
Good Governance & Administration and Effective Communications

Leadership - Customer Servicing - Quality Partnerships - The Greater Good of the Game

PRESIDENT'S REPORT



It is with much pleasure I present my President's Report for 2014/15 in what has been another busy but very rewarding year.

We had an operating profit of \$139,131 against a budgeted profit of \$925.

This is a very pleasing result and after taking into consideration the favourable share market movements our overall surplus was \$175,940. James Copes our Treasurer will elaborate in his report as to how this favourable result came about.

Our fourth Tennis Victoria Championships Dinner / Victorian Tennis Awards was held on Monday 29 June at the MCG with 328 in attendance. Our special guest was 7 time Grand Slam winner, Evonne Goolagong Cawley who shared her thoughts on tennis and her career and work. Frank Sedgman, another great of the game was in attendance and we thank him for his continued support of our dinner. For the first time, the Victorian Spirit of Tennis Award was jointly awarded to Pat Gilchrist and Carol Pearce, the stalwarts and driving force behind the very successful VCTA Country Week, where over 1,000 competitors appear every year. Mt Eliza Tennis Club received the Most Outstanding Club, Centre or Association Award. Congratulations to all other winners for their contribution to what makes tennis so great in this state.

This year we held an inaugural "Conversations with Champions" lunch as a way for people to hear from and ask questions of a champion in an intimate atmosphere. The guests at our special lunch were Cadel Evans, the first Australian Tour de France winner, Craig Tiley, CEO of Tennis Australia and Todd Woodbridge, multiple Grand Slam Doubles Champion. We thank our partner Signature Sport for helping us make this innovation happen. All proceeds went towards tennis development.

Apart from the above two events, our other big occasion for the year was our Volunteers' Breakfast, supported by ANZ, which was again held at the MCG on the first Thursday of the Australian Open. It was attended by 350 people and it is our way of saying thank you to the many volunteers who help out at clubs and associations without whom tennis would not exist in the way that it does. Volunteers are the life blood of our sport.

The major matters we as a Board worked on throughout the year were as follows. Firstly after updating our Strategic Plan last year, we constantly reviewed and made some minor changes to strategies to ensure they were relevant in a view of the number of changes that have occurred throughout the year, particularly in the area of affiliation. Secondly we continued to recommend changes to our constitution to ensure that it was in line with the latest corporate governance and Australian Sports Commission requirements. To help in this area our December 2014 Board meeting was held at the offices of our lawyers, Lander & Rogers, who presented to us the latest legal requirements and trends in this area. I am pleased to be able to advise that we are a leader amongst Tennis Australia and its Member Associations in this important area.

Illustrating this, we have continued to refine the duties of our Nominations Committee, which is chaired by an independent person, to ensure we can get the skills and best qualified people for our Board, but not forgetting that we need people with a knowledge of tennis. We have also modified our committee structure and formed a Country Advisory Group and Competitions Committee under the Chairs of Directors Simon Meadows and Maria Keys respectively to help advise the Board in these important areas.

I have said the last two years the most important item we were working on with Tennis Australia was affiliation reform which finally came to fruition on 1 July 2014 and has seen the number of people registered with Tennis Victoria grow from 112,000 to 167,954 which is by far the highest of any state. This initiative, as I said last year, and is worth repeating, has put into clubs the greatest financial investment ever. Following on from this initiative and its success we have received from funding Tennis Australia for an additional four Participation Leaders (formerly Community Tennis Officers) from 1 July 2015, which will help grow participation and enable us to better service clubs.

Thank you to all our partners and sponsors, in particular Tennis Australia, VicHealth, ANZ, Sport and Recreation Victoria and Slazenger for their continued support which enables us to develop and deliver new programs and continue with existing ones so that we can serve you well.

I welcome Phil Crouch to the Board, and would like to thank all the staff, especially Matthew Kennedy our CEO, for their dedication and hard work which makes Tennis Victoria the leading light of Member Associations. I would also like to thank all the Board including James Copes our Treasurer, and our two Vice Presidents Maria Keys and Gary Clark for their support, advice and contribution to me and Tennis Victoria.

David Stobart
President, Tennis Victoria

TREASURER'S REPORT



It is with great pleasure I present the 2015 Treasurer's Report.

You will notice that in line with last year's financial reports, we have adopted the Reduced Disclosure

Regime, as supported by the auditor (Hayes Knight), Audit and Risk Committee and the Board.

As highlighted in the President's Report, 2015 has been another extremely successful year, in particular the first year under the affiliation reform. In May 2014, the 2015 Tennis Victoria budget was set at a small operating surplus of \$925. It was clear the organisation would encounter an intriguing year under the new affiliation model.

The final 2015 operating result was a profit of \$139,131 (2014: deficit \$58,652). This increased by a further \$36,809 net surplus on revaluation of financial assets (investments). Combining both of these surpluses results in the Comprehensive Income Attributable to Members is a surplus of \$175,940 (2014: surplus \$36,323). In turn, the Members' Reserves have again increased, further ensuring funds are available should

external factors significantly impact revenue in the future.

Under Tennis Victoria's Strategic Plan focusing on participation, the total uniquely registered participants across all formats of tennis (club, ANZ Tennis Hot Shots and Cardio Tennis) significantly increased to 167,954. Achieving these results has reinforced the success of the new affiliation model and receiving additional funding support from Tennis Australia. As highlighted in my 2014 Treasurer's Report, Tennis Victoria has sound corporate governance that ensures key business items are meticulously reviewed and dealt with professionally in a considered manner.

Grants are a key area of funding (2015: \$3,319,175, 2014: \$1,480,455). Tennis Australia grants (which are primarily linked to achieving growth in participation numbers) are vital in providing and delivering a number of programs on an annual basis. Combined with grants from Sport and Recreation Victoria and VicHealth, programs to continue to enhance tennis in Victoria can be taken to hundreds of thousands of people.

Key to success has been the ability to have more staff available to assist

clubs and associations. The increase in staff resourcing (approx. \$390,000) was offset by additional funding received. Services to affiliation also increased by approximately \$200,000 (which is offset by funding from Tennis Australia). All other expenses have materially remained the same.

Our investments performed particularly well for the second year in a row with unrealised gains of \$36,809 (2014: \$94,975 gain), resulting in total financial investments hitting new peaks above \$1,440,000. Dividends and distributions from investments remained strong at \$74,647 (2014: \$51,264).

Cash reserves remain healthy with over \$1.8 million in cash held at 30 June 2015. Similarly, Total Members' Funds increased by \$173,947 and reserves remain strong for the years to come.

Volunteerism by numerous individuals at various levels, whether it be local clubs, associations, commercial centres, or at State level, remains an integral component to carrying out the services of tennis to Victorians, particularly from a financial perspective. All volunteers are commended for their tireless efforts.

I would like to unreservedly thank Luke Preston, Tennis Victoria's Business Operations Manager, for another year of outstanding performance and commitment.

Thank you also to my Board colleagues who have constantly provided positive feedback and guidance in my role as Treasurer. I appreciate all of your experience, commitment and devotion to tennis.

James Copes
Treasurer, Tennis Victoria

TENNIS VICTORIA BOARD OF DIRECTORS



Back L-R:
Peter Cuxson,
Mark Da Silva,
James Copes
(Treasurer), Phil
Crouch, Peter
Owen

Front L-R:
Simon Meadows,
David Stobart
(President),
Gary Clark (Vice
President), Anne
Baldwin

Absent: Maria
Keys (Vice
President)

CHIEF EXECUTIVE OFFICER'S REPORT



I am delighted to provide this CEO's report for the year through to 30 June 2015.

2014/15 was the second year of Tennis Victoria's delivery on its current Strategic Plan to 2016.

The Plan has five Focus Areas which form the basis of my reporting to you below.

As this full Annual Report details, the past 12 months have again seen some significant changes and positive developments for the organisation and the game. In particular, Tennis now has a substantial suite of programs and products to best meet the needs of current and future participants within the rapidly and materially changed nature of the community sport marketplace.

FOCUS AREA 1: SUPPORTING GRASSROOTS TENNIS - ENHANCING CAPABILITY

Our new affiliation model for 2014/15 has been a game changer in this regard. It was the culmination of many years work, and a much appreciated commitment of support from Tennis Australia. The outcomes have already been extremely beneficial for the game and for local clubs/centres. As at the close of year one on 30 June 2015, 98 new clubs/affiliates - many of them quite substantial - had joined/re-joined the Tennis family which will obviously always be at its strongest together. Over \$1 million of previously collected affiliation fees was left in clubland across metropolitan and country Victoria.

In addition, 2014/15 saw a TennisConnect Rewards program for player registrations with \$335,000 paid out to local clubs and deliverers across the state.

The ongoing expansion of our Recognition Program - from recognising volunteers to Top 50 Clubs to talented young players to coaches and more - has been important. In these respects, we were delighted to have ANZ formally join

us as Tennis Victoria's Volunteer and Community Support partner during the year. We look forward to a long and fruitful relationship.

Pleasingly, we now have more Participation Leaders (formerly known as Community Tennis Officers) out in the field to support tennis and those who work tirelessly at the grassroots.

FOCUS AREA 2: PARTICIPATION - MORE PEOPLE PLAYING MORE OFTEN

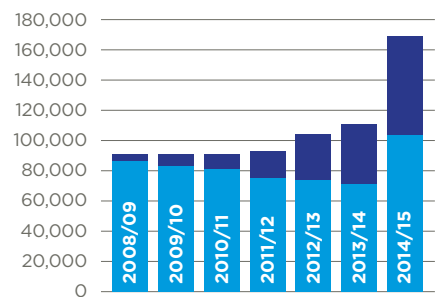
In complete alignment with the national vision of Tennis Australia to achieve One Million registered participants (currently 415,459), this is clearly now Tennis Victoria's prime role, measure and objective. And the secret to our success will be the core components of the following Participation Story diagram.



The end of financial year statistics for Victoria - being a combination of new players and Tennis better connecting with existing players - speak for themselves and are very exciting. Our Total Unique Registered Participants was 167,954. This is a 49% increase on 112,681 in 2013/14. And this Victorian figure represents 40% of the national Tennis total (compared to 35% last year), despite Victoria only being 25% of Australia's population.

ANZ Tennis Hot Shots - being the bulk of the National Programs component of the below graph - is core to the future success of Tennis in so many ways. In just four years, Victoria's number of boys & girls registered to the Hot Shots program has gone from 9,175 to 77,739 at this year's 30 June 2015 close. It is a fantastic story of rapid and important progress.

TOTAL UNIQUE REGISTERED PARTICIPANTS (VIC)



- National Programs - Hot Shots and Cardio Tennis
- Club registrations

FOCUS AREA 3: COMPETITION AND PATHWAYS

Strategically, the ongoing roll-out of ANZ Tennis Hot Shots Leagues, and the wider piloting of the short and sharp modified FAST4 format, were our focuses here. Both remain works in progress that will be very important to our sport's future in different ways.

The Future Stars Program and also the Player Support Program were important support mechanisms to young developing careers. As detailed in later pages, there were some outstanding performances by Victorian tennis players over the past year. Tennis Victoria heartily acknowledges and congratulates these talented athletes and looks forward to their futures.

FOCUS AREA 4: PLACES TO PLAY – FACILITIES AND THEIR MANAGEMENT

Tennis facility developments across the state were significant in 2014/15 (please see page 18).

A major focus of the Places to Play team has been to assist new and existing venues to ensure they have considered all available options in having the right management models in place.

Victorian tennis is so lucky to have 1,143 registered tennis coaches, 34% of the national total, and our encouragement and support of the strongest possible club/coach relationships at all facilities has remained an important focus in recent times.

FOCUS AREA 5: GOVERNMENT RELATIONS

At a local level, Tennis Victoria and club/association relationships – and shared understandings – with Local Government Authorities continues to be enhanced in many ways.

Partnering with and securing significant investment from the State Government for our new Opening Up Tennis project, which links easy to use Book A Court software to gate/lighting hardware at venues for easier than ever access, was a very significant highlight of the year. We believe this will be a big winner for players and club administrators alike and we really look forward to rolling out the pilots. In this respect, we sincerely thank both Damian Drum and John Eren as the Honourable Ministers for Sport over this period.

As in previous years, Tennis Victoria was the only official State Sporting Association partner to the State Government for “Premier’s Active April”, offering tennis participation benefits to over 103,000 Victorians who took part.

ACKNOWLEDGEMENTS

The four main themes of our Strategic Plan are: leadership, customer servicing, quality partnerships, and the greater good of the game. And the Focus Areas of our Plan are underpinned by Good Governance & Administration and Effective Communications.

With the Board’s leadership, and ongoing improvements over the year, the governance of our organisation is now very well in line with modern best practice and the principles of the Australian Sports Commission. Our financial management remained sound. I commend and thank all of the individuals on Tennis Victoria’s committees and advisory bodies, as detailed on page 31, for their outstanding efforts during the year.

In respect to just one element of our customer servicing, the attendance and engagement at our Victorian Community Tennis Forums – new in 2014/15 – has been excellent. I heartily acknowledge the many dedicated tennis volunteers at all levels across the state who are the lifeblood of the great game. The contributions of all these people, and their clubs and associations, to Victorian tennis is immense.

The list of our supporters on page 45 is the backbone of the quality partnerships that are key to our success. Tennis Victoria deeply appreciates the support from all of our government and corporate sponsors and partners who contribute so much to tennis in Victoria. Very special mention goes to the State Government (Sport and Recreation Victoria), VicHealth, Slazenger, ANZ, Yarrowonga Mulwala Tourism and, of course, Tennis Australia, as our major partners and supporters.

Speaking of Tennis Australia, I especially thank CEO Craig Tiley, and Director of Participation, Craig Morris for their and their teams’ support throughout the year – we work hand in hand. And I highlight our national body’s amazing annual achievement in delivering one of the world’s greatest

sporting events, the Australian Open Tennis Grand Slam, right here in Victoria. I am also glad to be a part of the team of other Member Association CEOs that is passionate about sharing, learning and constantly achieving for Australian tennis.

I sincerely acknowledge the President, David Stobart, for all that has been accomplished in his time in the role and thank him for a productive working partnership that I highly value and thoroughly enjoy. I also extend appreciation to all the Directors of the Board for their guidance and support over the year. They work diligently for the sport.

Finally, I commend the dedicated team of staff at Tennis Victoria for all their hard work and efforts. The Board received an independent survey assessment/report of our ‘people and culture’ in September 2014 and, collectively, this team has created and continues to foster something positive and special. Like the Board, the staff will always put the greater good of the game above all else in their ongoing decision making, dealings and daily workings. Their passion and commitment to serving and progressing tennis leaves us well placed to best address all the challenges and opportunities that will always confront us. I continue to feel proud and privileged to lead the team.

Matthew Kennedy
Chief Executive Officer

A MESSAGE FROM TENNIS AUSTRALIA'S CEO



There is a real buzz about our sport, whether it be in the suburbs of Melbourne or in regional Victoria.

Loyalty, Excellence, Teamwork and Humility are the values that underpin our daily operations,

complemented by an innate innovative streak.

We value our excellent and highly collaborative working relationship with Tennis Victoria, which we believe helps drive benefits for the sport throughout the community.

A special highlight has been the work Tennis Victoria has done to increase the number of registered participants in the sport. In the past financial year Tennis Victoria achieved 167,954 registered participants, an increase of 49 per cent on the previous 12 months. This growth was aided by a new affiliation model and the ever-growing popularity of ANZ Tennis Hot Shots.

.....
In the past financial year
Tennis Victoria achieved

167,954

registered participants,
an increase of 49% on the
previous 12 months
.....

It has been symptomatic of many of the areas in which we work together to help drive growth in tennis and support those who deliver it, whether they be clubs, administrators, associations, volunteers, coaches or parents.

The joint effort from the entire tennis community has led to an incredible surge in the popularity of ANZ Tennis Hot Shots, with more than 570,000 children across the nation enjoying the experience in the past 12 months and 1,043 primary schools involved.

An additional 319 new or reconditioned courts have been delivered in the past year, with a total of 2,154 courts delivered as part of the National Court Rebate Scheme since its inception in 2007. We continue to work together to provide quality facilities for players of all abilities at both metropolitan and regional locations.

Australian Open 2015 enjoyed a record attendance of 703,000 in a summer that also featured the global launch of **FAST4** tennis and a brilliant Emirates Australian Open Series of lead-in events, attracting strong attendances and excellent viewing audiences on television and online around the world.

The appointment of Pat Rafter led to a restructuring of the Performance team with the aim of building on all the good work of recent years done in each of the National Academies.

The results from the Australian players have been encouraging but there is still plenty of work to be done at all levels and we are looking forward to continuing the journey.

There are exciting plans for the continued growth and development of our sport, from grassroots to the elite level. Participation initiatives including ANZ Tennis Hot Shots, **FAST4** and our player registration program will remain a focus and continue to drive more people to play more tennis, more often at tennis courts around the country.

It has been an incredible year with a lot of successful outcomes but the most pleasing has been the growth, passion and collective effort of all our staff. They continue to excite and excel, pushing the boundaries and innovating every aspect of our business. We are ONE Team.

Thank you, your staff and Board, for your dedication, support and co-operation.

Of course, our sport would not be what it is today without the enduring support of the Australian tennis community. Players, coaches, officials, administrators and fans around the country are the often unsung heroes of tennis; thank you for your unrelenting contribution.

We are so fortunate to be part of such a passionate community and look forward to another year growing our great sport together.

Craig Tiley
CEO, Tennis Australia

THE TEAM AT TENNIS VICTORIA



BACK ROW: Tamatha Harding *Special Projects Leader*, Brett McLennan *Coach Development Manager*, Aaron Bosse *Participation Leader Country South West*, Kate Fox *My Tennis Administrator*, Matthew Kennedy *Chief Executive Officer*, Nick Hinneberg *Executive Manager Tennis Operations*, Jeff Downes *Competitions Manager*, Adam Feiner *Senior Participation Leader Metro Inner South*, Ken Barton *Facilities Operations Manager*, Luke Preston *Business Operations Manager*, Pat Nicholls *Coach Development Administrator*.

MIDDLE ROW: Nattalie Brown *Participation Leader Country North East*, Zoe Plastow *Participation Leader Metro Central*, Sue Dundas *Participation Leader Country North West*, Lucinda Hinchey *Marketing and Communications Coordinator*, Narelle Holding *My Tennis Administrator*, Rebecca Andrews *Club Services*

Officer, Jacquelyn Gonsal *Executive Assistant to CEO*, Adana Kinsella *Reception*, Tim McGrath *Manager TennisConnect*, Emma Bannan *Participation Leader Metro East*, Belinda Kleverlaan *Executive Manager Participation*, Emily Rea *Player Development Coordinator*.

FRONT ROW: Gabriella Tobias *Marketing and Communications Manager*, Melissa Stojanovic *Participation Leader Metro West*, Kristy Howes *Get Into Cardio Tennis Business Development Manager*, Stephanie Eshak *Participation Leader Metro North*, Shelly Hart *Tournaments and Events Administrator*, Tom Dixon *Places to Play Coordinator*, Jake Dunn *Competitions Administrator*, James Madder *Senior Participation Leader Metro South*, Tanya Mason *Participation Leader Country South East*, Patrick Landy *Coach Development Coordinator*.

ABSENT: Jamie Stefanato *Participation Leader Metro Inner East*, Ken Jacobs *Executive Manager Government Relations and Places to Play*, Andrew Reynolds *Tournaments and Events Manager*, Deanna Penman *Get Into Cardio Tennis Project Coordinator*, Adam Crameri *Country Participation Manager*, Danielle Lowerson *Participation Project Officer*, David Price *Participation Leader Metro South East*, Sof Megas *Officiating Development Coordinator*, Virginia Wilkins *Reception*.

Tennis Victoria also acknowledges the following people for their contribution in 2014/15: Hamish Cain, Christopher Saliba, Peter Jenkin, Yvette Lewkowicz, Liz Smith, Debbie Evangelidis, Alex Jago

Photo taken on 18 September 2015

COMMUNITY TENNIS REPORT



PARTICIPATION

A key focus of the Tennis Victoria Strategic Plan to 2016 is to increase participation – more people playing more often. The Tennis Victoria team, in partnership with stakeholders, has seen great success in this area. Highlights include:

ANZ TENNIS HOT SHOTS

Our end of financial year registrations for this junior tennis program were outstanding, with a total of 77,739 registrations, well above our target of 49,198. The national promotion of the program and increased deliverers (Coaches, Schools and Volunteers in the Community Play Program) all contributed to this excellent result.

CARDIO TENNIS

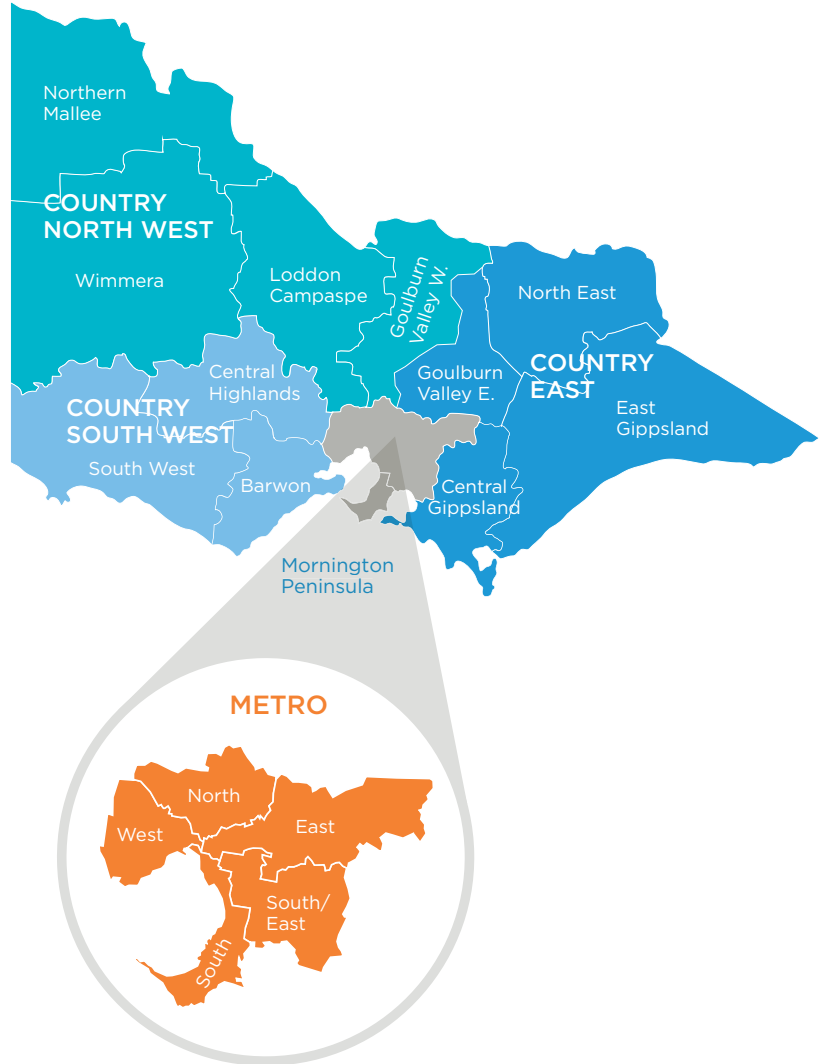
This innovative fitness-based tennis program is now offered by 199 Coaches. 2014/15 saw the launch of the Secondary School Program, which will be a great way for secondary students to enjoy tennis via Cardio Tennis.

ACE PROGRAM (ACCESSIBLE, COMMUNITY, EQUALITY)

Tennis Victoria is involved in VicHealth's State Sporting Association Participation Program (SSAPP). This funding and partnership, along with Sport and Recreation Victoria's Access all Abilities (AAA) Program, allows us to offer support for various inclusion programs. In 2014/15, Tennis Victoria proudly supported 70 programs and 4,715 participants. Programs were wide ranging and offer outstanding community engagement through tennis. Examples of programs supported include people with disabilities (deaf, blind, wheelchair, intellectual disabilities, special needs) and also newly arrived/ Culturally and Linguistically Diverse communities (CALD).

AO TENNIS BLITZ

This was a fantastic way to connect local communities with the Australian Open. The online campaign encouraged individuals, schools and clubs to complete designated challenges to earn points for their nominated town. The top 256 point scoring towns nationally were allocated a player in the Men's or Women's Australian Open singles draw. The AO Tennis Blitz for Australian Open 2015 saw some great results for Victorian communities. Victoria was well represented in the men's and women's singles draws featuring key players such as Rafael Nadal (Warrnambool), Eugenie Bouchard (Mornington), and Nick Kyrgios (Castlemaine). Melbourne, cheering for Andy Murray, was a great chance to win but eventually lost in a thrilling final to Novak Djokovic.



108,331

registered club participants, a huge 44% increase on last year

AFFILIATES

Year	Clubs/Centres	Association	Total
2009/10	858	98	956
2010/11	838	94	932
2011/12	817	94	911
2012/13	801	98	899
2013/14	798	98	896
2014/15	811	98	883

- Clubs/Centres
- Association

REGISTERED CLUB PARTICIPANTS

Year	Metropolitan	Country	Total
2009/10	56,973	27,544	84,517
2010/11	53,410	27,837	81,247
2011/12	53,332	22,011	75,343
2012/13	52,386	21,898	74,284
2013/14	48,721	20,038	75,402
2014/15	77,173	31,158	108,331

- Metropolitan
- Country

VICTORIA'S TOP 50 CLUBS ANNOUNCED 1 JULY 2015

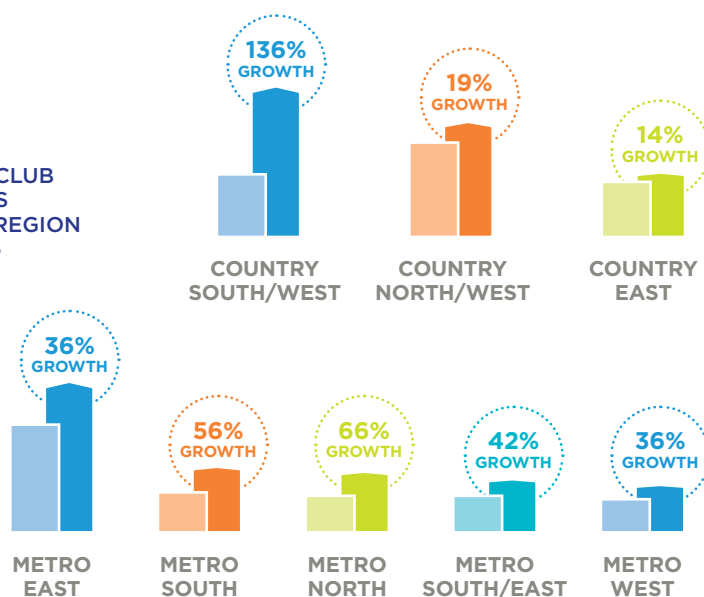
Ranking is based on registered members in 2014/15.

Ranking	Club	Registered players
1	Kooyong LTC	8500
2	Royal South Yarra LTC	4500
3	East Malvern TC	1083
4	Geelong LTC	887
5	Point Lonsdale TC	730
6	Bundoora TC	646
7	Anglesea TC	619
8	Notting Hill-Pinewood TC	589
9	Grace Park Hawthorn Club	574
10	Beaumaris LTC	530
11	Sunbury LTC	523
12	Port Fairy TC	513
=13	Berwick TC	512
=13	Tally Ho TC	512
15	Dendy Park TC	479
16	Willison Park TC	475
17	Royal Park TC	468
18	Swan Hill Lawn Tennis & Croquet Club	467
19	Heatherdale TC	459
20	Mt Prospect District TA	457
21	Eley Park TC	449
22	Elwood Park TC	443
23	Fitzroy TC	438
=24	Mill Park TC	433
=24	Mt Eliza TC	433

Ranking	Club	Registered players
=26	Albert Park LTC	432
=26	South Hawthorn TC	432
28	Glen Iris Valley Rec Club	419
29	Frankston TC	418
30	Wodonga Tennis Centre	415
31	Bendigo TA	413
32	East Camberwell TC	406
33	Eltham TC	400
34	Melbourne University TC	399
35	Overport Park TC	397
36	Liston TC	393
37	Blackburn TC	392
38	Vermont TC	387
39	Yarrawonga LTC	386
40	Plenty TC	382
41	Donvale TC	381
=42	Buckley Park TC	378
=42	Carmelite Middle Park TC	378
44	Canterbury TC	370
45	Shepparton LTC	363
46	Glenvale TC	361
=47	Park Orchards TC	360
=47	Traralgon TA	360
=49	Eaglemont TC	359
=49	Melton South TC	359

CONGRATULATIONS TO ALL CLUBS, LARGE AND SMALL, ON THEIR EFFORTS IN INCREASING THE NUMBER OF REGISTERED PARTICIPANTS AT THEIR CLUB. AGAIN, WE ARE PLEASED TO REPORT THERE HAS BEEN OVERALL GROWTH IN ALL COUNTRY AND METROPOLITAN REGIONS.

REGISTERED CLUB PARTICIPANTS GROWTH BY REGION 13/14 TO 14/15



TENNISCONNECT

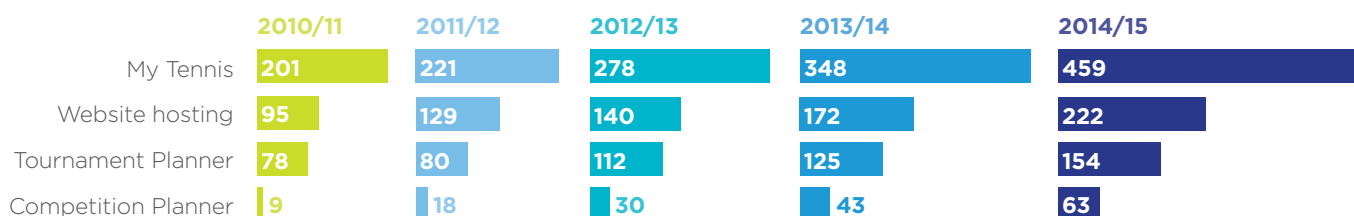
To improve engagement with players Tennis Australia introduced a new initiative: TennisConnect. The focus of TennisConnect in 2014/15 was improving the quality of the sport's demographic and communication information, with clubs receiving \$5 for every registered player who verified their information online. \$335,000 in participant registration TennisConnect rewards were paid out to local clubs and deliverers in 2014/15.

NATIONAL IT PROGRAMS

Clubs and associations are encouraged to use our national IT programs that are tailored for tennis. My Tennis is a membership management system and Club Websites allow affiliates to set up a free website with a user friendly template under the tennis brand. In regard to on-court programs, Competition Planner assists clubs and associations to manage competitions and Tournament Planner offers online entries, tournament draws

and scheduling. Both platforms allow easy viewing of matches and results for participants. Training and support is available to all affiliates who wish to take up any of the IT programs and as expected, usage of all programs continues to grow annually.

IT PROGRAM USAGE ACROSS CLUBS AND DELIVERERS



COMMUNITY TENNIS OFFICERS

Tennis Victoria added an additional Community Tennis Officer (CTO) to the Country area during 2014/15, which increased the total dedicated staff to five metropolitan and three country regions throughout the state as illustrated on page 9. The role of the CTO is to be the first point of call to assist affiliates and coaches in their region, and to increase tennis participation and venue operations. They also work closely with selected schools and local councils, encouraging close links with clubs and coaches. Our CTOs conducted 1,805 face to face visits with stakeholders during the financial year, and developed important relationships within the tennis community.

AFFILIATION

Tennis Victoria, with full support and significant investment from Tennis Australia, was pleased to announce a new affiliation model in February 2014. This game changing new model replaced the onerous per member charge with one simple, annual fee, based on the number of tennis courts at the club. This new model attracted 98 new and returning tennis clubs back to the Tennis Victoria fold since the announcement, and specifically 72 in 2014/15.

In 2014/15 our total number of affiliates was 883 obtained during the first year; this lower increase number of 14 is mainly as a result of several mergers and improved multi-club structures emanating from the reform, some foldings of clubs that would have happened anyway, and also an incorporation issue that we are still working through with Catholic Church clubs.

In regard to registered club participants, our 2014/15 total was 108,331. This is a huge 44% increase compared to the previous year total of 75,402. This pleasing reverse of consecutive decline was made possible due to the new affiliation model. This model now allows clubs to offer more flexible and innovative options, and encouragement to record all club participants.

Tennis Victoria recognises the Top 50 Clubs each year, based on the number of players registered by affiliated clubs. In 2014/15 we welcomed 19 new clubs to the Top 50, with 12 of these being clubs that have recently rejoined the Victorian tennis family under the new affiliation model.

A full summary of the Top 50 Clubs can be found on page 10.

FREE TENNIS DAYS

Clubs are encouraged to host Free Tennis Days to attract new participants to try tennis at their venue. Clubs who register their events receive promotion on the Tennis Australia website and a Free Tennis Day Pack with prizes and promotional material to enhance their day. 208 clubs registered and hosted a Free Tennis Day in 2014/15.

OTHER PROMOTIONS/ACTIVATIONS

Our CTOs work closely with Local Government Areas to promote tennis at major activations and festivals. We again provided a wonderful tennis experience for thousands of families who attended the Open Day at Government House on Australia Day. Our ongoing sponsorship of Premiers Active April provided great exposure for tennis, with over 103,000 Victorians involved in the annual initiative. We also conducted a major promotion at the Priceline Pharmacy Kooyong Classic and continue to work closely with Tennis Australia to offer a variety of participation and promotion opportunities during the Australian Open.

Some key participant activity figures are summarised below.

Program	Participants
ANZ Tennis Hot Shots	77,739
Cardio Tennis Registered Participants	2,191
Free Tennis Day Participants	15,042
ACE Program Participants	4,715
Activations Participants	93,759



YOUTH DEVELOPMENT

The Future Leaders program inspires young people to get involved in volunteering in tennis. A successful camp was held at Anglesea during the July 2014 school holidays, with 21 Year 10 and Year 11 participants who went on to complete a 40 hour volunteer project at their local tennis club. Tennis Victoria continues to work closely with SEDA who run the Tennis Victoria Sports Development Program for Year 11 and 12 students. The program offers students an engaging curriculum within the Sport and Recreation industry, and participating students assist Tennis Victoria with Tennis in Schools and event activations as part of their valuable industry experience.

COUNTRY TENNIS

This year saw consultation on country governance, and subsequent reform including the replacement of the Region representative-based Country Committee with a smaller Country Advisory Group; and the creation of a Regional Team Events Advisory Panel (RTEAP), comprised of one representative from each Country Region plus a Metropolitan Association representative.

Tennis Victoria in partnership with the Victorian Country Tennis Association (VCTA) works closely to support our country clubs and volunteers. Community Tennis Officers conduct club forums in their region to share key updates and messages. They also liaise with and link in Local Governments, Regional Sports Assemblies and Active After Schools Communities where appropriate.

Congratulations to the Victorian Country Tennis Association (VCTA) and Swan Hill Lawn Tennis Club who hosted the VCTA Country Week in February 2015. This iconic event was again an outstanding success, with over 1,200 players enjoying the grass court tennis along with the renowned social activities.

Belinda Kleverlaan
*Executive Manager
Community Tennis*

Coaches and officials are managed by Tennis Australia staff based in the Tennis Victoria office. Below is a snapshot of Victorian figures.

COACHING COURSES

	2014/15		2013/14		2012/13	
	Number of courses delivered	Number of course participants	Number of courses delivered	Number of course participants	Number of courses delivered	Number of course participants
Master Club Professional Coaching qualification	0	0	0	0	1	14
Club Professional Coaching qualification	1	16	1	16	1	12
Junior Development Coaching qualification	4	63	1	18	5	62
Community Coaching Course	3	34	3	36	2	38
National Schools Partnership Program (teacher training)	1	28	2	17	N/A	N/A
Intro To ANZ Tennis Hot Shots	24	366	30	495	15	300
Total registered members		1,143		1,363		1,219
Total qualified registered members		628		744		622

Prior to 2014/15 Intro to ANZ Tennis Hot Shots participants were recorded in the total of registered coach members. They no longer receive an associate coach membership therefore are not included in the total coach figures.

OFFICIALS

	2014/15		2013/14		2012/13	
	Number of qualification courses delivered	Number of course participants	Number of qualification courses delivered	Number of course participants	Number of qualification courses delivered	Number of course participants
Long Lines	6	63	6	63	3	34
Cross Lines	1	22	1	18	1	15
Chairs	3	33	5	31	2	15
Chairs C	1	8	1	10	1	7
Chairs B	1	3	1	4		
Total registered members		286		250		243
Total qualified registered members		243		214		219



TENNIS OPERATIONS REPORT

PENNANT

The 2015 Pennant season saw a strong resurgence in the number of metro based clubs participating, increasing from 134 to 150 clubs.

This resulted in an increase to 500 teams entered, the highest in many years. Overall there were 4,000 players involved in 14,000 rubbers across the season.

ASIA PACIFIC TENNIS LEAGUE

The 2014 ATL South East Conference season saw the addition of a Tasmanian men's team – the Tassie Devils. They joined the Kooyong Classics, RSY Royals, Dingley Dingoes, Tennis World Taipans and Waverley Warriors. The women's teams were the Kooyong Classics, MCC Stars, Waverley Warriors and newcomers Bayside Thunder and Mornington Missiles.

For the first time, a super-round of ATL was taken to country Victoria. Held on the natural grass courts at the Yarrowonga Lawn Tennis Club as part of the Country Festival of Tennis, the super-round was supported by event partner Yarrowonga Mulwala Tourism.

The ATL finals day was again held on the indoor courts at the National Tennis Centre. In another first for the 2014 ATL season, the South East Conference finals were preceded by the first ever ANZ Tennis Hot Shots Leagues State Carnival Day, featuring 100 orange and green ball kids who played as a curtain raiser for the main event.

Bayside Thunder, led by Daria Gavrilova, clinched the women's title defeating the MCC Stars. In the men's final defending champions Kooyong Classics, led by John Peers and Andrew Whittington, were far too strong for RSY Royals.

Both winning teams went on to compete in the ATL national play-offs held during the second week of the 2015 Australian Open. It was fantastic to see Bayside Thunder take out the overall women's title. Congratulations to their players and support team on a marvellous effort.

TENNIS VICTORIA PREMIER LEAGUE

The Tennis Victoria Premier League continues to showcase the very best of the traditional, longer playing format of the sport. Glen Iris Valley Recreation Club was once again the host venue for the final. Unfortunately the weather had the biggest impact on the results. The 2015 Tennis Victoria Premier League titles were therefore awarded to the highest placed teams, Grace Park Hawthorn and Beaumaris Lawn in the men's and women's respectively.

JUNIOR PENNANT

In 2014, Junior Pennant saw 10 associations represented, with a combined total of 105 teams. While numbers were slightly lower than in 2013, it was pleasing to see several new associations participating.

COMPETITIONS COMMITTEE

The Tennis Victoria Competitions Committee, formed in January 2015, took on oversight responsibilities across all Tennis Victoria's competitions. The committee will be reviewing all competition categories to continually improve the competition experience for all tennis stakeholders from players to administrators.

ANZ TENNIS HOT SHOTS LEAGUES

The ANZ Tennis Hot Shots Leagues is the first team competition experience for kids aimed at 7 - 11 year olds. ANZ Tennis Hot Shots Leagues is the vital link between learning the game and playing the game. The evolution of the ANZ Tennis Hot Shots Leagues continued with Tennis Victoria working closely with stakeholders to deliver the Leagues through both internal and inter-club delivery models. ANZ Tennis Hot Shots Leagues will continue to grow to have a greater number of League deliverers including coaches, clubs and associations.

REGIONAL TEAMS EVENTS

In 2015, a new 17/u Country Cup event for regional players was introduced into the 2015 events calendar. Once again, both metro and country players had the opportunity to represent their metro association or country tennis region in a variety of events catering to all age groups. 600 players took part across a variety of host venues throughout Victoria.

Our thanks and appreciation go to the Kooyong Lawn Tennis Club and their Foundation for their ongoing support of both the Alicia Molik and Wayne Arthurs Cups.

The 2015 Inter-regional Country Championships was staged at Mt. Prospect Tennis Association in Creswick, with the Barwon region claiming an unprecedented sixth consecutive win.

Victoria has the **largest number**

of unique tournament players in Australia across the Junior Development Series, Australian ranking points junior and open tournaments, Intellectual Disability State Championships and Wheelchair events: 13,750



TOURNAMENTS

Victoria has the largest number of unique tournament players in Australia across the Junior Development Series, Australian ranking points junior and open tournaments, Intellectual Disability State Championships and Wheelchair events. There were 243 sanctioned competitive opportunities offered in 2014/15.

2015 Junior Claycourt State Championships, held at Dendy Park Tennis Club and surrounding venues pleasingly had a significant increase in players.



TOURNAMENTS/PROVIDERS

Event	2014	2013	2012
Junior Development Series	65 tournaments conducted by 15 event partners	84 tournaments conducted by 23 event partners	84 tournaments conducted by 23 event partners
Junior Tour	47 tournaments conducted by 31 event partners	40 tournaments conducted by 23 event partners	42 tournaments conducted by 21 event partners
Australian Money Tournaments	42 tournaments conducted by 20 event partners	53 tournaments conducted by 18 event partners	47 tournaments conducted by 17 event partners
Pennant	Supported by 134 clubs (480 teams)	Supported by 134 clubs (480 teams)	Supported by 134 clubs (480 teams)
Junior Pennant	Supported by 11 metro associations	Supported by 11 metro associations	Supported by 11 metro associations
Regional Teams Events including Inter-regional Country Championships	Supported by 11 regions and 8 metro associations	Supported by 11 regions and 8 metro associations	Supported by 11 regions and 8 metro associations
Premier League and Asia Pacific Tennis League - South East Conference	Supported by 11 clubs (25 teams)	Supported by 11 clubs (25 teams)	Supported by 11 clubs (25 teams)
General Tournaments	2014/15: 73 (conducted by 19 event partners)	101 (sanctioned across 47 event partners)	101 (sanctioned across 47 event partners)

PLAYER NUMBERS*

Event	2014	2013	2012
Junior Development Series	1620	1131	812
Junior Tour players	5170	4925	4689
Australian Money Tournament players	2139	2060	1890
Pennant players	3974	3756	3974
Victorian Wheelchair and Victorian ID Open players	48	48	123
Regional Team Events incl. Inter-regionals	540	587	540
Premier League and ATL South East Conference	259	236	259

*Not all unique players, multiple competitive participants will exist.

FUTURE STARS PROGRAM

The Future Stars program offers talented players aged 10 - 13 years a disciplined and high quality training environment. Catering for up to 18 athletes, the program continues to focus on long term player development as well as player support. The program features inter-state tours, sport science and is aligned to the national athlete development pathway through to the National Academy Melbourne.

Many of the private coaches in the program are also part of Tennis Australia's network of Talent Development coaches based throughout Victoria. In 2015, there was increased national resourcing in the talent space, through the separation of Coach and Talent Development.

A highlight for the Future Stars Program was the high representation of Future Stars athletes selected to represent School Sport Victoria at the 2014 national Bruce Cup event held in Queensland. Future Stars players led the state team to victory in the event, for just the third time in history.

PLAYER SUPPORT PROGRAM

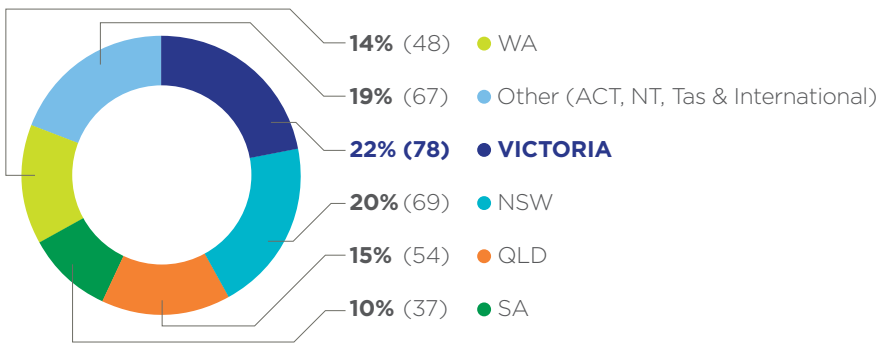
In 2015, 66 junior players (both metro and country based), gained a position in the Player Support program. Designed to complement each player's individual weekly training, this reward and recognition program for highly ranked junior players brings players together each term, to provide an engaging and supportive environment.

REGIONAL ACADEMY OF SPORT NETWORK

Sport and Recreation Victoria support the Regional Academy of Sport network. Tennis is one of only a handful of sports that is represented in all Academy environments. The Regional Academy of Sport program caters for 120 regionally based junior athletes and is an important link in the player pathway.

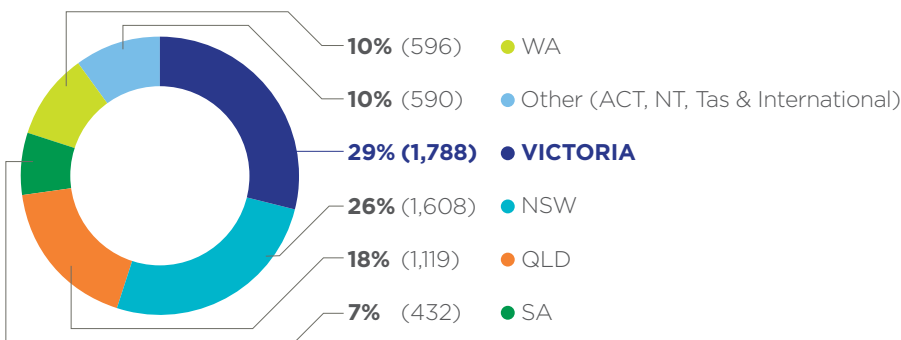
Nick Hinneberg
Executive Manager
Tennis Operations

PLAYERS IN THE ANNUAL JUNIOR NATIONAL CHAMPIONSHIPS



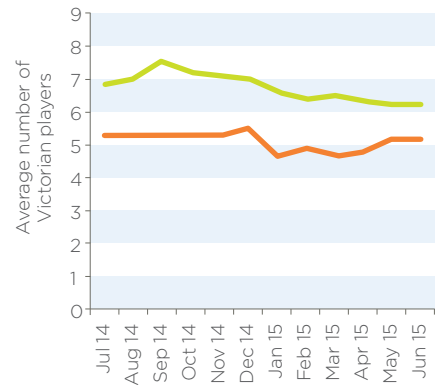
Victoria was 24%
(84 players) in 2013/14
Main draw singles only

PLAYERS WITH AN AUSTRALIAN RANKING



Victoria was 31%
(1,832) in 2013/14

VICTORIAN PLAYERS WITH A TOP 25 AUSTRALIAN RANKING IN THEIR BIRTH YEAR



Boys 10/u to 20/u
Girls 10/u to 20/u

Boys average 6.63 vs 7.26
in 2013/14

Girls average 5.02 vs 5.76
in 2013/14

GOVERNMENT RELATIONS AND PLACES TO PLAY REPORT

In 2014/15, the Places To Play team focused on areas of engagement with local and state government and the development, promotion and support of quality, welcoming and sustainable venues.

A highlight of the year was receiving \$250,000 in funding from the State Government for phase 1 of our "Opening Up Tennis" program for fifteen clubs around Victoria. This involves the introduction of technology to make club venues more accessible to the public through an integrated online booking system. Such has been the popularity of this initiative that a further fourteen clubs have been invited to be part of phase 2 of the program.

A further initiative during the year involved the engagement of Michael Bodman of Inside Edge Sport and Leisure Planning to assist us in the development of a strategic document titled "Places To Play Future Directions -Towards 2020". This document will provide industry guidance in responding to the emerging challenges facing tennis venues across Victoria.

There are four key pillars upon which this strategy is based, which will be incorporated in all of our communication to all stakeholders.

THE FOUR KEY PILLARS FOR PLACES TO PLAY IN THE FUTURE ARE:

1	ACCESSIBILITY
2	SUSTAINABILITY
3	ACCOUNTABILITY
4	COMMUNITY BENEFIT

Throughout the year the Places to Play team has continued to have regular interaction with Local Government Authorities (LGA) throughout the state. This has included participation in the review of tennis strategies, development of new facilities, assisting with funding applications, relocation of clubs to new facilities, discussions around club leases and advice on the range of management models that are available for tennis facilities.

It was particularly pleasing to witness the opening of two new facilities being the Hume Regional Tennis and Community Centre (18 courts and community facilities) in Craigieburn and the new Mornington Tennis Centre, home of the Mornington Tennis Club (12 conipur clay court). In both cases state and local government authorities as well as Tennis Australia have invested significantly in the development of these state of the art facilities for the future of the sport.

In January we conducted our second Local Government forum in conjunction with Tennis Australia and this was a wonderful opportunity to discuss a range of subjects that were of mutual interest around the provision and management of facilities and also to hear about examples of "best practice" in club management.

Arising out of this second forum has been the establishment of a Local Government Advisory Group (LGAG) comprising eight representatives from LGAs around the State and representatives from both the Tennis Victoria and Tennis Australia Places to Play teams. The role of the LGAG is in the main to assist in the identification of key challenges and opportunities for tennis with a view to increasing community

access and growing participation in tennis as well as having the ability to influence and contribute to other key strategies of the Places to Play team.

Important relationships during the year continued with Community Clubs Victoria, Sport and Recreation Victoria, the Department of Regional Development, the Metropolitan Planning Authority, 2MH Consulting and SGL.

Tennis Victoria again participated in the Regional Victoria Living Expo at the Melbourne Convention and Exhibition Centre and this was an excellent opportunity to interact with members of the public and the large number of LGA representatives in attendance.

We also continued our direct interaction with clubs in relation to facility issues and management.

Investment in tennis facilities continues with at least \$11.3 million invested into new and upgraded facilities completed around Victoria by local and State government along with continued support from Tennis Australia and clubs themselves also making invaluable contributions in this area. Some examples of this facility investment are contained in the schedule on page 18.

We remain in a highly competitive environment not only for participants but also facilities and volunteers and must always remember that the large majority of tennis facilities are contained on council or Crown land and as such local government is the major supporter of tennis in Victoria and must be treated accordingly.

Ken Jacobs

Executive Manager - Government Relations and Places to Play

EXAMPLES OF COMPLETED FACILITY INVESTMENT 2014/15 FINANCIAL YEAR

Name of Club/Facility	Total Cost
Project: Courts	
Bright Tennis Club (Alpine Local Government)	\$60,000
Moyston Recreation Reserve (Ararat)	\$85,000
Macleod Tennis Club (Banyule)	\$160,000
Burwood Tennis Club (Boroondara)	\$13,750
Taylor's Lakes Tennis Club (Brimbank)	\$120,000
Delahey Tennis Club (Brimbank)	\$120,000
Berwick TC (Casey)	\$27,500
Cranbourne South TC (Casey)	\$22,500
Kennington Recreation Reserve (Bendigo)	\$15,000
Strathdale Park (Bendigo)	\$15,000
Tyrendarra Tennis Club (Glenelg)	\$320,000
Lethbridge Tennis Courts (Golden Plains)	\$192,000
Mt Prospect (Hepburn)	\$160,000
Chelsea Lawn Tennis Club (Kingston)	\$10,000
Templeton Tennis Club (Knox)	\$10,000
Serpell Tennis Club (Manningham)	\$85,000
Kingsville Tennis Club (Maribyrnong)	\$50,000
Seymour Tennis Complex (Mitchell)	\$10,175
Wandong Tennis/Netball courts (Mitchell)	\$14,600
Beveridge Tennis/Netball courts (Mitchell)	\$19,200
Broadford Tennis/Netball courts (Mitchell)	\$2,495
Pyalong Tennis/Netball courts (Mitchell)	\$5,846
Kilmore Tennis club courts (Mitchell)	\$2,500
Yarrowonga Lawn Tennis Club (Moir)	\$40,000
Mornington TC (Mornington)	\$1,700,000
Willatook Tennis Club (Moyne)	\$52,000
Terip Terip TC (Murrindindi)	\$100,000
St Mary's PS (Swan Hill)	\$10,000
Heyfield Tennis Club (Wellington)	\$175,000
Vermont Tennis Club (Whitehorse)	\$38,192
East Burwood Tennis Club (Whitehorse)	\$10,102
Geelong Lawn TC (Geelong)	\$30,000
Bridgewater TC (Loddon)	\$14,200
Coburg TC (Moreland)	\$47,564
Bayside College (Hobsons Bay)	\$70,000
Project: Fences	
Devon Meadows TC (Casey)	\$8,000
Endeavour Hills TC (Casey)	\$30,000
Various public tennis courts (Knox)	\$27,000
Project: Lighting	
Boroondara Tennis Centre (Boroondara)	\$50,000
Greythorn Park Tennis Club (Boroondara)	\$50,000
Kerang LTC (Gannawarra)	\$51,066
Tatura LTC (Shepparton)	\$87,000
Tally Ho Tennis Club (Monash)	\$60,000
Werribee Central TC (Wyndham)	\$33,454
Drysdale TC (Geelong)	\$47,047

Name of Club/Facility	Total Cost
Oakleigh TC (Monash)	\$80,935
Project: Opening Up Tennis	
North Park TC (Melbourne)	\$11,226
Carlton Gardens TC (Melbourne)	\$9,206
Bruce Park TC (Frankston)	\$9,169
Chelsea Heights TC (Kingston)	\$8,558
Eildon Park Tennis Club (Knox)	\$17,829
Montrose TC (Yarra Ranges)	\$9,278
Project: Pavillion	
South Hawthorn Tennis Club (Boroondara)	\$1,000,000
Hawthorn Tennis Club (Boroondara)	\$250,000
East Camberwell Tennis Club (Boroondara)	\$350,000
Kew Tennis Club (Boroondara)	\$330,000
East Camberwell Tennis Club (Boroondara)	\$90,000
Pearcedale TC (Casey)	\$650,000
Narre Warren North TC (Casey)	\$48,000
Aspendale Tennis Club (Kingston)	\$20,000
Knox City Tennis Club (Knox)	\$9,397
Ferntree Gully Tennis Club (Knox)	\$1,023
Guy Turner Tennis Club (Knox)	\$34,349
Rowville Community Centre (Knox)	\$3,152
Rowville Tennis Club (Knox)	\$34,128
Wantirna Tennis Club (Knox)	\$10,452
Park Orchards Tennis Club (Manningham)	\$100,000
Mildura Lawn Tennis Club (Mildura)	\$14,285
Mildura Lawn Tennis Club (Mildura)	\$31,245
Red Cliffs Lawn Tennis Club (Mildura)	\$9,689
Numurkah Tennis Club (Moir)	\$22,000
Project: Combination of above	
Wonthaggi Tennis Club (Bass Coast)	\$202,250
North Balwyn Tennis Club (Boroondara)	\$8,000
Sunshine Park Tennis Club (Brimbank)	\$240,000
Clyde TC (Casey)	\$126,600
Talbot Tennis Club (Central Goldfields)	\$90,000
Spring Gully (Bendigo)	\$30,000
Lalor Tennis Club (Whittlesea)	\$420,000
Casa D'Abruzzo (Whittlesea)	\$850,000
Wodonga Tennis Centre (Wodonga)	\$1,109,705
Dunstan Park (Darebin)	\$160,000
Highmoor Tennis Club (Kingston)	\$120,000
Mountain Gate Tennis Club (Knox)	\$26,291
Gowanbrae Multipurpose Courts (Moreland)	\$400,000
Moyhu Tennis Club (Wangaratta)	\$135,000
Grand Total	\$11,322,958

Note 1: This is not a definitive list of the tennis facility development over the last 12 months. It is a snapshot to demonstrate the breadth of development across the state.
 Note 2: The figures were compiled based on information from clubs and LGAs.

MARKETING AND COMMUNICATIONS REPORT

COMMUNICATIONS



Facebook
2,463
likes

+26.5%*



Twitter
1,246
followers

+26.5%*



Instagram
606
followers

+58.7%*

Tennis Victoria continued to communicate with key stakeholders through our regular e-newsletters. *Tennis Victoria News* is sent monthly to all affiliated Presidents, Secretaries, Treasurers and Membership Officers. *It's Everybody's Sport* is sent every other month to all registered participants who have registered an email address and *Advantage Tennis* is sent quarterly to key local government contacts. Open rates can be seen below:

Tennis Victoria News
39.9% (+22.8%)

It's Everybody's Sport
34.7% (+9.2%)

Advantage Tennis
45% in its first year
of distribution.

*compared to 2013/14

ANZ VICTORIAN COMMUNITY TENNIS FORUMS

A new introduction in 2014/15 was the ANZ Victorian Community Tennis Forums. Held in August, November and March these Forums are a chance for all community tennis decision makers to come together to discuss and workshop relevant topics. Attendance at these events has reached as high as 170 community tennis participants with topics discussed including building participation across the state, club management successes, increasing female participation and promoting and growing your club.

TENNIS VICTORIA RECOGNITION PROGRAM

CHAMPIONSHIPS DINNER/ VICTORIAN TENNIS AWARDS

Tennis Victoria hosted its fourth annual Championships dinner on Monday 29 June 2015, to once again coincide with the first night of Wimbledon. Keeping with what's becoming tradition, the event was held in the historic MCC Members Dining Room. 328 guests were witness to a wonderful evening of entertainment coinciding with the presentation of the Victorian Tennis Awards. Special guest Evonne Goolagong Cawley entertained the crowd with her stories of triumph on court and also her amazing life off court. Linda Pearce from The Age, Melbourne footballer and former coach of Mark Philippousis, Todd Viney and commentator Allan Stone were also panellists.

The big winners were the Mt Eliza Tennis Club who took home the award for Most Outstanding Club, Centre or Association. The Victorian Spirit of Tennis Award was presented to two winners for the first time. Victorian Country Tennis Association and VCTA Country Week (which also won Most Outstanding Tournament) stalwarts Mrs Patricia Gilchrist and Mrs Carol Pearce were very popular and worthy recipients of this prestigious award. For the full list of winners please see page 35.



tennis.com.au/vic had
379,441
views this year

TENNIS VICTORIA VOLUNTEERS' BREAKFAST, PROUDLY PRESENTED BY ANZ

After the very successful inaugural event in January 2014, Tennis Victoria, supported by ANZ, were proud to host 350 Victorian community tennis volunteers for the second Volunteers' Breakfast on Thursday 22 January 2015 at the MCG. This event is a way for Tennis Victoria to say thank you and to reward the many volunteers and tennis community members who do so much to make this game so great. Former Grand Slam winner, Goran Ivanisevic entertained the crowd with stories from his career and two special volunteers were recognised on the day - Barbara Currie from Keon Park Tennis Club and Bill Cosgrave from Mt Prospect Tennis Association. Following the event, all guests were given tickets to the days play at Melbourne Park.

TENNIS VICTORIA SERVICE AWARDS

In 2014/15 there were **10 Tennis Victoria Service Awards** and **4 Highly Commended Service Awards** approved and awarded by the Tennis Victoria Board. Congratulations to all worthy recipients. For the full list of award winners see page 33.



Tennis Victoria has continued to recognise and celebrate the achievements of clubs, volunteers, players and coaches. A highlight of this was the Presentation of commemorative frames to the coaches and community clubs of Sam Groth and Omar Jasika in recognition of their Davis Cup and US Open success.

Gabriella Tobias

Marketing and Communications
Manager

FINANCIAL REPORT

Victorian Tennis Association Inc.
ABN 29 757 304 158
Trading as Tennis Victoria
Financial Report for the Year Ended 30 June 2015

BOARD OF DIRECTORS REPORT

Your Board of Directors (Board) members submit the financial report of the Victorian Tennis Association Inc. for the financial year ended 30 June 2015.

BOARD MEMBERS

The names of members throughout the year and at the date of this report are:

David Stobart (President)	Maria Keys (Vice President)
Peter Cuxson	James Copes (Treasurer)
Anne Baldwin	Simon Meadows
Phil Crouch (from October 2014)	Robert Jamieson (to October 2014)
Gary Clark (Vice President)	Mark Da Silva
Peter Owen	

PRINCIPAL ACTIVITIES

The principal activities of the association during the financial year were the promotion and development of the game of tennis in Victoria. These activities were conducted under the registered trading name of Tennis Victoria.

SIGNIFICANT CHANGES

No significant change in the nature of these activities occurred during the year.

OPERATING RESULT

The operating result for the year ended 30 June 2015 was a surplus of \$139,131 (2014 \$58,652 deficit).

Signed in accordance with a resolution of the Members of the Board.



David Stobart

President

Date: 19 August 2015

STATEMENT OF PROFIT OR LOSS AND OTHER COMPREHENSIVE INCOME FOR THE YEAR ENDED 30 JUNE 2015

	Note	2015 \$	2014 \$
Revenue			
Membership & affiliation fees		854,124	1,730,190
Government grants		304,472	238,545
Tennis Australia grants		3,014,703	1,241,910
Sponsorships		120,771	197,649
Technical services fees		7,500	6,844
Athlete development fees		55,201	62,517
Competitions and tournaments entry fees		211,197	225,429
Interest received		32,715	25,794
Dividends & distributions received		74,647	51,264
Capital surplus / (deficit) on disposal of assets		(4,537)	7,092
Other income		53,020	62,550
Total Revenue		4,723,813	3,849,784
Expenses			
Community Tennis			
Services to affiliates		574,929	375,057
Grants to affiliates		390,968	105,659
Programs		18,762	271,258
		984,659	751,974
Tennis Operations			
Competitions and events		399,840	347,380
Player development		101,711	106,101
		501,551	453,481
Corporate Services			
Employee benefits		2,457,698	2,065,063
Communications		131,704	157,509
Depreciation & amortisation		30,219	47,008
Operating lease		17,733	14,321
Administration		461,118	419,080
		3,098,472	2,702,981
Total Expenses		4,584,682	3,908,436
Surplus / (Deficit) from operations	2	139,131	(58,652)
Other Comprehensive Income			
Items which will be reclassified subsequently to profit or loss when specific conditions are met			
Net surplus on revaluation of financial assets		36,809	94,975
Other Comprehensive Income		36,809	94,975
Total Comprehensive Income Attributable to Members		175,940	36,323

The accompanying notes form part of these financial statements.

STATEMENT OF FINANCIAL POSITION AS AT 30 JUNE 2015

	Note	2015 \$	2014 \$
Assets			
Current Assets			
Cash and cash equivalents	5	1,855,403	1,109,502
Trade and other receivables	6	179,879	133,926
Inventories	7	1,500	1,500
Other current assets	8	116,784	68,820
Total Current Assets		2,153,566	1,313,748
Non-Current Assets			
Financial assets	9, 10	1,241,264	1,223,270
Equipment	11	100,646	60,815
Total Non-Current Assets		1,341,910	1,284,085
Total Assets		3,495,476	2,597,833
Liabilities			
Current Liabilities			
Trade and other payables	12	1,018,222	320,291
Employee benefits payable	13	232,146	147,857
Total Current Liabilities		1,250,368	468,148
Non-Current Liabilities			
Employee benefits payable	13	7,027	65,551
Total Non-Current Liabilities		7,027	65,551
Total Liabilities		1,257,395	533,699
Net Assets		2,238,081	2,064,134
Members' Funds			
Reserves	14	1,521,040	1,485,531
Accumulated surplus		717,041	578,603
Total Members' Funds		2,238,081	2,064,134

The accompanying notes form part of these financial statements.

STATEMENT OF CHANGES IN EQUITY FOR THE YEAR ENDED 30 JUNE 2015

	Accumulated Surplus \$	Financial Assets Reserves \$	General Reserves \$	Total \$
Balance at 30 June 2013	637,939	(6,823)	1,394,285	2,025,401
Surplus / (Deficit) attributable to members	(58,652)			(58,652)
Net movement in Moffatt Awards Fund			(1,073)	(1,073)
Net movement in Natural Damage Fund			-	-
Net movement in Neale Fraser Foundation			4,167	4,167
Transfers to and from reserves	(684)			(684)
Revaluation increment / (decrement)		94,975		94,975
Balance at 30 June 2014	578,603	88,152	1,397,379	2,064,134
Surplus / (Deficit) attributable to members	139,131			139,131
Net movement in Moffatt Awards Fund			(1,768)	(1,768)
Net movement in Natural Damage Fund			-	-
Net movement in Neale Fraser Foundation			468	468
Transfers to and from reserves	(693)			(693)
Revaluation increment / (decrement)		36,809		36,809
Balance at 30 June 2015	717,041	124,961	1,396,079	2,238,081

The accompanying notes form part of these financial statements.

STATEMENT OF CASH FLOWS FOR THE YEAR ENDED 30 JUNE 2015

	Note	2015 \$	2014 \$
Cash flows from operating activities			
Receipts from affiliates		972,359	1,908,405
Operating grants receipts		4,151,373	1,724,551
Dividends & distributions received		74,647	51,264
Other receipts		384,486	289,316
Payments to suppliers and employees		(4,811,906)	(4,066,662)
Interest received		32,715	25,794
Net cash provided by / (used in) operating activities		803,674	(67,332)
Cash flows from investing activities			
Movement of investment securities		3,826	(396,544)
Purchase of equipment		(70,050)	(4,070)
Proceeds from disposal of investment securities		10,451	299,416
Movement of General Reserves	14	(2,000)	2,396
Net cash (used in) investing activities		(57,773)	(98,802)
Cash flows from financing activities			
Repayment of borrowings		-	-
Net cash provided by / (used in) financing activities			
Net increase (decrease) in cash held		745,901	(166,134)
Cash at beginning of year		1,109,502	1,275,636
Cash at end of year	5	1,855,403	1,109,502

The accompanying notes form part of these financial statements.

NOTES TO THE FINANCIAL STATEMENTS FOR THE YEAR ENDED 30 JUNE 2015

The financial statements cover Victorian Tennis Association Inc. as an individual entity. Victorian Tennis Association Inc. is an association incorporated in Victoria and operating pursuant to the Associations Incorporation Reform Act 2012.

NOTE 1 SUMMARY OF SIGNIFICANT ACCOUNTING POLICIES

Basis of Preparation

These general purpose financial statements have been prepared in accordance with the requirements of the Associations Incorporation Reform Act 2012, Australian Accounting Standards – Reduced Disclosure Requirements, Accounting Interpretations and other authoritative pronouncements of the Australian Accounting Standards Board. For the purposes of preparing the financial statements, the Association is a not-for-profit entity. The financial statements were authorised for issue by the Board on 19 August 2015.

Australian Accounting Standards set out accounting policies that the AASB has concluded would result in financial statements containing relevant and reliable information about transactions, events and conditions to which they apply. Compliance with Australian Accounting Standards ensures that the financial statements and notes also comply with International Financial Reporting Standards. Material accounting policies adopted in the preparation of these financial statements are presented below and have been consistently applied unless otherwise stated.

The financial statements have been prepared on an accruals basis and are based on historical costs, modified, where applicable, by the measurement at fair value of selected non-current assets, financial assets and financial liabilities. The financial statements have been prepared in Australian dollars which is the Association's functional and presentation currency. All values are rounded to the nearest dollar.

Accounting Policies

a. Income Tax

The Association is exempt from income tax.

b. Inventories

Inventories held for distribution are initially recognised at their current replacement cost at date of acquisition. Inventories of goods purchased and held for distribution are initially recognised at cost. The cost of bringing each product to its present location and condition is determined on a first-in, first-out basis. Cost is adjusted, when applicable, for any loss of service potential. Loss of service potential may be indicated by a current replacement cost lower than the original acquisition cost or obsolescence of goods held for distribution. Current replacement cost is the cost the company would incur to acquire the goods held for distribution at reporting date.

c. Property, Plant and Equipment

Each class of property, plant and equipment is carried at cost or fair value as indicated less, where applicable, any accumulated depreciation and impairment losses.

d. Plant and Equipment

Plant and equipment is measured on the cost basis and is therefore carried at cost less accumulated depreciation and any accumulated impairment losses. In the event the carrying amount of plant and equipment is greater than its estimated recoverable amount, the carrying amount is written down immediately to its estimated recoverable amount. A formal assessment of recoverable amount is made when impairment indicators are present (refer to Note 1(g) for details of impairment).

Depreciation

The depreciable amount of all fixed assets, including buildings and capitalised lease assets, is depreciated on a straight-line basis over the asset's useful life commencing from the time the asset is held ready for use. The depreciation rates used for each class of depreciable assets are:

Class of Fixed Asset	Depreciation Rate
Office equipment	15-50%
Furniture and fittings	7-21%
Technical and tournament equipment	30-50%

The assets' residual values and useful lives are reviewed and adjusted, if appropriate, at the end of each reporting period.

Gains and losses on disposals are determined by comparing proceeds with the carrying amount. These gains and losses are included in the Statement of Comprehensive Income. When revalued assets are sold, amounts included in the revaluation relating to that asset are transferred to retained earnings.

e. Leases

Lease payments for operating leases, where substantially all the risks and benefits remain with the lessor, are recognised as expenses on a straight-line basis over the lease term.

f. Financial Instruments

Initial recognition and measurement

Financial assets and financial liabilities are recognised when the entity becomes a party to the contractual provisions to the instrument. For financial assets, this is equivalent to the date that the Association commits itself to either purchase or sell the asset (i.e. trade date accounting is adopted).

Classification and subsequent measurement

Financial instruments are subsequently measured at fair value, amortised cost using the effective interest rate method, or cost. Fair value represents the amount for which an asset could be exchanged or a liability settled, between knowledgeable, willing parties. Where available, quoted prices in an active market are used to determine fair value. In other circumstances, valuation techniques are adopted.

Financial assets at fair value through profit or loss

Financial assets are classified at 'fair value through profit or loss' when they are held for trading for the purpose of short-term profit taking, where they are derivatives not held for hedging purposes, or when they are designated as such to avoid an accounting mismatch or to enable performance evaluation where a group of financial assets is managed by key management personnel on a fair value basis in accordance with a documented risk management or investment strategy. Such assets are subsequently measured at fair value with changes in fair value (i.e. gains and losses) recognised in profit or loss.

Available-for-sale financial assets

Available-for-sale financial assets are non-derivative financial assets that are either not capable of being classified into other categories of financial assets due to their nature, or they are designated as such by management. They comprise investments in the equity of other entities where there is neither a fixed maturity nor fixed or determinable payments. They are subsequently measured at fair value with changes in such fair value (i.e. gains or losses) recognised in other comprehensive income (except for impairment losses and foreign exchange gains and losses). When the financial asset is derecognised, the cumulative gain or loss pertaining to that asset previously recognised in other comprehensive income is reclassified into profit or loss.

Impairment

At the end of each reporting period, the Association assesses whether there is objective evidence that a financial instrument has been impaired. In the case of available-for-sale financial instruments, a prolonged decline in the value of the instrument is considered to determine whether an impairment has arisen. Impairment losses are immediately recognised in profit or loss. Also, any cumulative decline in fair value previously recognised in other comprehensive income is reclassified to profit or loss at this point.

g. Impairment of Assets

At the end of each reporting period, the Association assesses whether there is any indication that an asset may be impaired. The assessment will consider both external and internal sources of information. If such an indication exists, an impairment test is carried out on the asset by comparing the recoverable amount of that asset, being the higher of the asset's fair value less costs to sell and its value-in-use, to the asset's carrying amount. Any excess of the asset's carrying amount over its recoverable amount is immediately recognised in profit or loss. Where it is not possible to estimate the recoverable amount of an individual asset, the association estimates the recoverable amount of the cash-generating unit to which the asset belongs.

h. Employee Benefits

Provision is made for the Association's liability for employee benefits arising from services rendered by employees to the end of the reporting period. Employee benefits that are expected to be settled within one year have been measured at the amounts expected to be paid when the liability is settled.

i. Cash and Cash Equivalents

Cash and cash equivalents include cash on hand, deposits held at-call with banks and other financial institutions, and other short-term, highly liquid investments with original maturities of three months or less.

j. Revenue and Other Income

Revenue is recognised when the right to receive it is established, except in the instance of grants linked to a specific commitment to expend funds in a future period. Interest and Investment revenue is recognised on a proportional basis taking into account the interest rates applicable to the financial assets. All revenue is stated net of the amount of goods and services tax.

k. Goods and Services Tax (GST)

Revenues, expenses and assets are recognised net of the amount of GST, except where the amount of GST incurred is not recoverable from the Australian Taxation Office (ATO). Receivables and payables are stated inclusive of the amount of GST receivable or payable. The net amount of GST recoverable from, or payable to, the ATO is included with other receivables or payables in the statement of financial position. Cash flows are presented on a gross basis. The GST components of cash flows arising from investing or financing activities, which are recoverable from or payable to the ATO, are presented as operating cash flows included in receipts from customers or payments to suppliers.

l. Comparative Figures

When required by Accounting Standards, comparative figures have been adjusted to conform to changes in presentation for the current financial year.

m. Trade and Other Accruals

Trade and other payables represent the liability outstanding at the end of the reporting period for goods and services received by the Association during the reporting period, which remain unpaid. The balance is recognised as a current liability with the amounts normally paid within 30 days of recognition of the liability.

n. Provisions

Provisions are recognised when the Association has a legal or constructive obligation, as a result of past events, for which it is probable that an outflow of economic benefits will result and that outflow can be reliably measured. Provisions recognised represent the best estimate of the amounts required to settle the obligation at the end of the reporting period.

o. Income received in advance

The liability for income received in advance represents the unutilised amounts of income received on the condition that specified services are delivered or conditions are fulfilled. The services are usually provided or the conditions usually fulfilled within 12 months of receipt of the funds. Where the amount received is in respect of services to be provided over a period that exceeds 12 months after the reporting date or the conditions will only be satisfied more than 12 months after the reporting date.

p. Key Estimates – Impairment

The Association assesses impairment at the end of each reporting period by evaluation of conditions and events specific to the Association that may be indicative of impairment triggers. Recoverable amounts of relevant assets are reassessed using value-in-use calculations which incorporate various key assumptions.

q. Key Judgments – Provision for Impairment of Receivables

Included in trade and other receivables at the end of the reporting period are debts the Board has deemed unlikely to be paid. In light of ongoing review and management of aged debts, no provision for impairment has been made at 30 June 2015 (2014: \$nil).

r. New Accounting Standards for Application in Future Periods

During the current year, Victorian Tennis Association Inc. adopted all of the new and revised Australian Accounting Standards and Interpretations applicable to its operations which became mandatory. The adoption of these Standards has not impacted on the recognition, measurement and disclosure of any transactions.

	2015 \$	2014 \$
NOTE 2 SIGNIFICANT REVENUE AND EXPENSES		
The following significant revenue and expense items are relevant in explaining the financial performance:		
Revenue		
VicHealth Grant: Partnerships for Health Scheme	180,000	115,000
Department of Transport, Planning & Local Infrastructure	51,000	119,000
Department of Health & Human Services	61,200	
Expenses		
Insurance	208,463	218,387
Occupancy	130,258	121,911
Coaching Fees	58,511	78,046
NOTE 3 KEY MANAGEMENT PERSONNEL COMPENSATION		
Short-term employee benefits	594,402	466,974
Post-employment benefits	48,303	42,520
Total Key Management Personnel Compensation	642,705	509,494
NOTE 4 AUDITORS' REMUNERATION		
Total Auditors' Remuneration	9,643	9,700
	9,643	9,700
NOTE 5 CASH AND CASH EQUIVALENTS		
Cash at bank and in hand	1,855,403	1,109,502
	1,855,403	1,109,502
NOTE 6 TRADE AND OTHER RECEIVABLES		
Trade debtors	111,625	67,752
Other debtors	68,254	51,769
Loans receivable	-	14,405
	179,879	133,926

NOTE 6 TRADE AND OTHER RECEIVABLES continued

	Gross Amount	Past due and impaired	Past due but not impaired Days (overdue)			Within initial trade terms
			31-60	61-90	>90	
2015						
Trade debtors	111,625	-	11,091	-	24,107	76,427
Other receivables	68,254	-	-	-	-	68,254
Total	179,879	-	11,091	-	24,107	144,681
2014						
Trade debtors	67,752	-	2,566	21,747	6,379	37,060
Other receivables	66,174	-	-	-	-	66,174
Total	133,926	-	2,566	21,747	6,379	103,234

	2015 \$	2014 \$
NOTE 7 INVENTORIES		
Inventories held for distribution	1,500	1,500
	1,500	1,500
NOTE 8 OTHER CURRENT ASSETS		
Prepayments	116,784	68,820
	116,784	68,820
NOTE 9 FINANCIAL ASSETS		
Available for sale financial assets comprise shares in listed corporations and managed funds at market value	1,241,264	1,223,270

All available-for-sale investments are quoted on the Australian Stock Exchange. Investment trusts are managed by professional external fund managers on behalf of the association and other investors. The trusts hold a variety of investments which generate a return based on income from those investments and changes in the market value of the investments. The association's investments in trusts can be redeemed on an at-call basis at the market value of the investment at the date of redemption less certain fees and charges.

NOTE 10 FAIR VALUE DISCLOSURES		
The Association carries the following assets at fair value: Available for sale investments	1,241,264	1,223,270
Refer to note 9 Financial assets for fair value information relating to the available for sale financial assets.		

NOTE 11 PROPERTY, PLANT AND EQUIPMENT		
Office equipment at cost	167,896	158,835
Accumulated depreciation	(157,671)	(153,409)
	10,225	5,426
Furniture and fittings at cost	323,886	269,293
Accumulated depreciation	(242,189)	(220,658)
	81,697	48,635
Technical & Tournament equipment at cost	46,220	39,824
Accumulated depreciation	(37,496)	(33,070)
	8,724	6,754
Total Property, Plant & Equipment	100,646	60,815

NOTE 11 PROPERTY, PLANT AND EQUIPMENT continued

Movements in carrying amounts

Movements in the carrying amounts for each class of equipment between the beginning and end of the current financial year.

	Office Equipment \$	Furniture & Fittings \$	Technical Equipment \$	Total \$
Balance at the beginning of year	5,426	48,635	6,754	60,815
Additions	9,061	54,593	6,396	70,050
Disposals	-	-	-	-
Depreciation & amortisation expense	(4,262)	(21,531)	(4,426)	(30,219)
Carrying amount at the end of the year	10,225	81,697	8,724	100,646

	2015 \$	2014 \$
NOTE 12 TRADE AND OTHER PAYABLES		
Trade creditors and accruals	554,595	259,100
Provision for future project(s)	-	30,000
Income received in advance	463,627	31,191
	1,018,222	320,291

	2015 \$	2014 \$
NOTE 13 EMPLOYEE BENEFITS PAYABLE		
Accrued annual and long service leave payable within 12 months		
Opening balance	147,857	100,792
Paid	(148,989)	(91,980)
Accrued	233,278	139,045
Closing balance	232,146	147,857
Accrued long service leave payable later than 12 months		
Opening balance	65,551	49,512
Paid	(8,587)	-
Accrued	(49,937)	16,039
Closing balance	7,027	65,551

	2015 \$	2014 \$
NOTE 14 RESERVES		
General Reserves are comprised of the natural damage fund, Gordon Moffatt awards fund, Neale Fraser Foundation and capital surplus reserve.		
Natural damage fund	18,250	18,250
The natural damage fund is set aside for the financial assistance of affiliates whose facilities sustain damage as a result of natural events.		
Gordon Moffatt awards fund	7,701	9,469
The Gordon Moffatt Awards fund provides awards in recognition of junior players' contributions to tennis and all round excellence, to assist with their development.		
Neale Fraser Foundation	19,557	19,089
The Neale Fraser Foundation has two components: The facilities development fund will provide funding for affiliated tennis clubs to contribute towards the upgrade and or expansion of their club facilities. The player development fund will provide grant opportunities for elite, Tennis Victoria registered, junior players to contribute towards their development.		
Capital surplus reserve	1,350,571	1,350,571
The capital surplus reserve contains funds that are for the general use of the organisation if required.		
Financial assets reserve	124,961	88,152
The financial assets reserve records revaluation of available for sale financial assets to market value.		
Total Reserves	1,521,040	1,485,531

NOTE 15 LEASING COMMITMENTS

Operating lease commitments

	2015 \$	2014 \$
Payable: minimum lease payments	136,214	126,636
Between 12 months and 5 years	373,076	484,047
	509,290	610,682

Operating leases are for the lease of premises and office equipment.

NOTE 16 RELATED PARTY TRANSACTIONS

Mr Phil Crouch (Director of the Board) is a senior manager at ANZ Bank, which has a sponsorship agreement with Tennis Victoria. The Board Members do not receive any remuneration for their activities as Board Members other than reimbursement of expenses incurred in the performance of their duties as Board Members.

NOTE 17 FINANCIAL RISK MANAGEMENT

The Association's financial instruments consist mainly of deposits with banks, short-term investments, accounts receivable and payable. The Association does not have any derivative instruments at 30 June 2015. The main risks the Association is exposed to through its financial instruments are liquidity risk and credit risk.

Liquidity risk

The Association manages liquidity risk by monitoring forecast cash flows.

Credit Risk

The maximum exposure to credit risk, excluding the value of any collateral or other security, at balance date to recognised financial assets, is the carrying amount, net of any provisions for impairment of those assets, as disclosed in the Statement of Financial Position and notes to the financial statements. The Association does not have any material credit risk exposure to any single receivable or group of receivables under financial instruments entered into by the Association.

NOTE 18 CONTINGENT LIABILITIES

	2015 \$	2014 \$
Contract Performance Guarantee	56,944	51,494

The amount is in regard to the Association's lease agreement to Melbourne & Olympic Parks Trust.

NOTE 19 EVENTS AFTER THE REPORTING PERIOD

The Board are not aware of any significant events since the end of the reporting period.

NOTE 20 ASSOCIATION DETAILS

The registered office of the association and principle place of the business is:

Victorian Tennis Association Inc.

AAMI Park
Olympic Boulevard
Melbourne, Victoria, 3000

STATEMENT BY MEMBERS OF THE BOARD

In the opinion of the Board members, the financial report:

- Presents a true and fair view of the financial position of Victorian Tennis Association Inc as at 30 June 2015 and its performance for the year ended on that date in accordance with Australian Accounting Standards (including Australian Accounting Interpretations) of the Australian Accounting Standards Board.
- At the date of this statement, there are reasonable grounds to believe that Victorian Tennis Association Inc. will be able to pay its debts as and when they fall due.

This statement is made in accordance with a resolution of the Board and is signed for and on behalf of the Board by:



David Stobart

President

Date: 19 August 2015



James Copes

Treasurer

Date: 19 August 2015



Hayes Knight Audit
chartered accountants - your partners in success

Hayes Knight Audit Pty Ltd
ABN: 86 005 105 975

Level 12, 31 Queen St,
Melbourne, VIC 3000

T: 03 8613 8888 F: 03 8613 8800
Email: info@hayesknighaudit.com.au

www.hayesknight.com.au

Registered Audit Company 291969

Independent Auditor's Report To the members of the Victorian Tennis Association Inc.

Report on the Financial Report

We have audited the accompanying financial report of the Victorian Tennis Association Inc., which comprises the statement of financial position as at 30 June 2015, the statement of comprehensive income, statement of changes in equity and statement of cash flows for the year then ended, notes comprising a summary of significant accounting policies and other explanatory information, and the management's assertion statement.

Management's Responsibility for the Financial Report

Management is responsible for the preparation and fair presentation of the financial report in accordance with Australian Accounting Standards and Association Incorporation Reform Act 2012, and for such internal control as management determines is necessary to enable the preparation and fair presentation of the financial report that is free from material misstatement, whether due to fraud or error.

Auditor's Responsibility

Our responsibility is to express an opinion on the financial report based on our audit. We conducted our audit in accordance with Australian Auditing Standards. Those standards require that we comply with relevant ethical requirements relating to audit engagements and plan and perform the audit to obtain reasonable assurance about whether the financial report is free from material misstatement.

An audit involves performing procedures to obtain audit evidence about the amounts and disclosures in the financial report. The procedures selected depend on the auditor's judgement, including the assessment of the risks of material misstatement of the financial report, whether due to fraud or error. In making those risk assessments, the auditor considers internal control relevant to the entity's preparation and fair presentation of the financial report in order to design audit procedures that are appropriate in the circumstances, but not for the purpose of expressing an opinion on the effectiveness of the entity's internal control. An audit also includes evaluating the appropriateness of accounting policies used and the reasonableness of accounting estimates made by management, as well as evaluating the overall presentation of the financial report.

We believe that the audit evidence we have obtained is sufficient and appropriate to provide a basis for our audit opinion.

Opinion

In our opinion, the financial report presents fairly, in all material respects, the financial position of the Victorian Tennis Association Inc. as at 30 June 2015, and its financial performance and its cash flows for the year then ended in accordance with Australian Accounting Standards and Association Incorporation Reform Act 2012.

Hayes Knight Audit Pty Ltd
Melbourne

Andrew Wehrens FCA
Director

Dated this 9th day of September 2015

An independent Member of the Hayes Knight Group and Morison International.
Liability limited by a scheme approved under Professional Standards Legislation.
Associated Offices : Adelaide | Auckland | Brisbane | Darwin | Melbourne | Perth | Sydney

BOARD AND COMMITTEES

BOARD OF DIRECTORS

The number of Board meetings held during the year for members to be eligible to attend and the number of meetings attended by each Board member during the financial year are:

	Eligible	Attended
David Stobart	8	7
Maria Keys	8	8
James Copes	8	6
Anne Baldwin	8	8
Gary Clark	8	8
Peter Cuxson	8	8
Mark Da Silva	8	7
Simon Meadows	8	7
Robert Jamieson (to October 2014)	3	1
Peter Owen	8	7
Phil Crouch (from October 2014)	6	6

COMMITTEES OF TENNIS VICTORIA

Audit and Risk

Ian Jenkins (Chair), Gary Clark (from November 2014), James Copes, Drew Fenton, Robert Jamieson (up to October 2014).

Pennant Competition (July - December 2014)

Geoff Armstrong (Chair), Matt Carroll, Graeme Heath, Daniel O'Neill, Shelley Preen, Aaron Sharpe.

Junior Pennant Competition (July - December 2014)

Larry McLean (Chair), Fran Absolom, Russell Hart, Brian Hovey, Michael Mullen, Brendon Noonan, Theo Robolas, Juliann Smith.

Competitions Committee (from February 2015)

Maria Keys (Chair), Geoff Armstrong, Larry McLean, Daniel O'Neill, Warren Maher, Phillip Goodman, Antony Hampson, Ken Young.

Country Committee (up until December 2014)

Simon Meadows (Chair), Loretta Gleeson, Leon Retallick, Stuart McRae, Jenny Joliffe, Rob Urquhart (up to September 2014), Andrew Drake (from October 2014), Mick Mullen, Russel Hart, Carla Ralph, Vicki Moore, Susie Grumley, Craig Radford.

Country Advisory Group (from February 2015)

Simon Meadows (Chair), Kim Tobin, Malcolm Thiel, Robin Lowe, Mick Mullen, Leon Retallick.



Regional Teams Events Advisory Panel (from February 2015)

Northern Mallee	Peter Morrison
Loddon Campaspe	Leon Retallick
Wimmera	Stuart McRae
Central Highlands	Jenny Joliffe
South West	Brenda Boyd
Barwon	Mick Mullen
Mornington Peninsula	Russell Hart
Goulburn	Heather Lees
North East	Doug Smith
Central Gippsland	Susie Grumley
East Gippsland	Aiden Fitzgerald

Nominations Committee

Leigh Russell (Chair), Ian Anderson, Adam Cossar, Mark Da Silva, Phil Crouch.

Disciplinary Committee

Mark Da Silva (Convenor), Shelley Lipe, Dom Alberico, Sam Cusumano, Jenny Cox, Jill Towers, Ian Eddington, Steve Ivcovici, Robert Peers, Hayden Rees, Ian Thomas, Peter Nicholas, Daryl Carter.

AWARDS



HONORARY LIFE MEMBERS

An award to recognise outstanding service to the Victorian Tennis Association.

1981 Mr Ian Carson, Dr John Diggle, Mr Jim Entink, Mr Geoff Kerr; 1982 Mr Harry Shilton; 1985 Mr Kevin Howard, Mr Alan Urban; 1986 Mr Albert Jacoby; 1987 Mr Peter Bellenger; 1994 Dr John Fraser; 1995 Mr Geoff Peters; 1999 Mr Ian Occleshaw; 2004 Mr Hamish Macmillan; 2006 Mrs Roma Shipp; 2010 Mr Kevin Bolton; 2012 Mr Geoffrey Stone; **2014 Mr Graeme Cumbrae-Stewart.**

VICTORIAN SPIRIT OF TENNIS AWARD

This award is to recognise a significant and valuable contribution to the advancement or popularity of the sport in any field (formerly the Victorian Centenary of Tennis Award). The recipient must be born in Victoria or lived the majority of their life as a Victorian resident.

1980 Mr Frank Sedgman; 1981 Mr Neale Fraser; 1982 Mr Brian Tobin; 1983 Mr Jim Entink; 1984 Mrs Judy Dalton; 1985 Mrs Margaret Court; 1986 Mr Paul McNamee; 1987 Mr Pat Cash; 1988 Mr Colin McDonald; 1989 Mr Peter McNamara; 1990 Dr John Fraser; 1991 Mr Alan Trengove; 1992 Mr Kevin Howard; 1993 Ms Anne Minter; 1994 Mr Ian Occleshaw; 1995 Mrs Nicole Bradtke; 1996 Mr Geoff Kerr; 1997 Mr Allan Stone; 1998 Mrs Beverley Rae; 1999 Mr Jack May; 2000 Mr Kevin Bolton; 2001 Mr Tony Ryan; 2002 Mr Jim Reid; 2003 Mr Peter Bellenger; 2004 Mr Max Atkins; 2005 Mr Jim Sheppard; 2006 Mr Eric Campbell; 2007 Mr Wayne Arthurs; 2008 Mr Hamish Macmillan; 2009 Ms Fran Graham; 2010 Mr Brian Grace; 2011/12 Mr Ian Barclay; 2012/13 Mr Colin Stubs; 2013/14 Ms Daniela Di Toro; **2014/15 Mrs Patricia Gilchrist & Mrs Carol Pearce.**

HIGHLY COMMENDED SERVICE AWARD

An award to recognise persons who have demonstrated their contribution to the sport of tennis through outstanding and exemplary service to any one or more of the State Tennis Association's affiliated tennis clubs and/or associations and/or member organisations. Service to other tennis related bodies may also be recognised.

1981 Mr Val Drew, Mr Ray Stock, Mr Lew Twamley, Mr Ralph Van Esveld; 1982 Mr Phillip Leek; 1983 Mr Kevin Bolton; 1985 Mr Daryl Cox; 1986 Mr Jack May, Mr Bob Hodgson; 1987 Mr Morris Scott; 1988 Mr Jim Sheppard; 1989 Mr Doug Newgreen; 1993 Mr Phil Edwards, Mr Ray O'Connor, Mr Tony Parrott; 1994 Mr Tom McAllister; 1996 Mr Peter Whitaker, Mr Mark Collins, Mr Ted Kendt; 1998 Mr Graeme Williams; 2000 Ms Fran Graham, Mrs Glad Woods, Mrs Roma Shipp, Mr Max Atkins, Mr David Bierwirth, Mr Brian Connor; 2004 Mr Doug Jeffery; 2005 Mr Graeme Cumbrae-Stewart; 2006 Mr Darrell White; 2008 Mrs Vicki Moore; 2010 Mr Len Pratt, Mr Rod Binns, Mrs Elsie Anderson; 2013 Ms Lyn Robinson; 2014 Mr Clive Edmonds, Mr Ken Jones, Mrs Lyn Gillen, **Ms Fran Absolom, Ms Beth McDonald; 2015 Mr Domenico Alberico, Mrs Marcia Handasyde.**



TENNIS SERVICE AWARD

An award to recognise persons who have demonstrated their contribution to the sport of tennis through devoted and significant service to any one or more of the State Tennis Association's affiliated tennis clubs and/or associations and/or member organisations. Service to other tennis related bodies may also be recognised.

1981 Mr Bill McGrath, Mr Sam Phillips; 1982 Mr Jack Thompson, Mr Richard Bear, Mr Jim Billows, Mrs Bobbie Collinson, Mr Harvey Harris, Mr Eric Morris; 1984 Laurie Sweet; 1985 Mrs Yvonne Peters; 1986 Cec Williams; 1987 Mr Ian Haebich, Mr Ken Jones, Mrs Roma Shipp; 1989 Mr Ken Blackshaw, Mr Ron Bury; 1990 Mr Tim Burns, Mrs Pat Guthrie, Mr Roland Klinge, Mr Keith Morrison, Mr Ron Williams; 1991 Mr Ray Abbey, Mr Stan Heywood; 1992 Mr Les Blackburn, Mrs Phyl Crowther, Mr Phonse Orger, Mr Len Spence, Mrs Lola Whiting; 1993 Mr Barry Barton, Mrs Bev McConnell; 1994 Mr Brian Collins, Mr Len Pratt, Mr Bob Hoopell; 1996 Ms Rosemary Wright, Mr Ralph Beeby; 1997 Mrs Pat Flynn, Mrs Vicki Moore; 1998 Mr John Finlay; 1999 Mr Robert Brian, Mr Robert Greig; 2000 Mrs Bev Hosie, Mr John Angus; 2001 Ms Sue Saliba, Mrs Enid Miller, Mr Jim Miller, Mr Angelo Cianchi; 2002 Mrs Denise Hutkinson, Mrs Aldene Glenister; 2003 Mr Maurice Baker, Mrs Jennifer Walker, Ms Selma Ruddick; 2004 Mr

Bryan Curran, Mr Ron Nelson; 2005 Mr Kevin O'Callaghan; 2006 Mr Ian Adderley, Mr Ron Carter, Mr Gregory Cooke, Mrs Gail Morse, Mrs Glenda Sundstrom; 2008 Mrs Marilyn Hannah; Mr Trevor Valentine, Mr Jack Carnell; 2009 Mr Murray Hart, Mrs Jocelyn Oliver; 2010 Mr Robert Payne, Mrs Marjorie Cox, Mr Frank Sutherland, Mrs Jill Morrison, Mr Robert Jackson, Mr Jim Birch, Mrs Eva Bettiol; 2011 Mr Trevor Smyth, Mrs Loretta Thrupp, Mr Peter Thrupp, Mr Russ Nicholls, Mr David Hocking, Mrs Janice Hocking, Mr Bill Goodwin; 2011/12 Mrs Dorothy Murdoch, Mrs Yvonne Law, Mrs Gail Norman, Mr Daryl Carter; 2012/13 Dawn McCormack, Mrs Marg Begent, Mr Ian Strong, Mrs Patricia Gilchrist, Mrs Carol Pearce, Mr Ken Young, Ms Nicole Seckold, Mr Geoff Gordon, Mr Derek Kew, Mr George Kunti, Mr Colin Thompson, Mr Bill Caven, Mr Rick Highett; 2013/14 Mrs Faye McLachlan, Mr David Clark, Ms Susie Grumley, Mr Brian Hovey, Mr Laurie Sparks, Mrs Anne Hubbard, Mr Alan Herberle, Mr Peter Ternes, Mr Russell Hart; **2014/15 Mrs Trudy Miles, Mr Les McNerney, Ms Judith Dungey, Mrs Faye Noble, Mrs Barbara Currie, Mrs Fran Coggins, Mr Robert Peterson, Mrs Kym Stephen, Mr Andrew Nicoll, Mrs Helen Pendry.**

MOST OUTSTANDING CLUB, CENTRE, OR ASSOCIATION

- 2011/12 Frankston Tennis Club
- 2012/13 Elsternwick Park Tennis Centre
- 2013/14 Kyneton & District Tennis Club
- 2014/15 Mt Eliza Tennis Club**

VOLUNTEER ACHIEVEMENT

- 2011/12 Julie Fidler
- 2012/13 Judy Scarrott
- 2013/14 Eric Beeston
- 2014/15 Robin Lowe**

MOST OUTSTANDING TOURNAMENT

- 2011/12 2011 William Loud Bendigo International, Bendigo Tennis Association
- 2012/13 AAMI Classic, Kooyong Lawn Tennis Club
- 2013/14 90th Annual Shepparton Easter Tournament, Shepparton Lawn Tennis Club
- 2014/15 VCTA Country Week, Swan Hill Lawn Tennis & Croquet Club**

MOST OUTSTANDING SCHOOL (NEW IN 2013/14)

- 2013/14 St Mary's Primary Greensborough
- 2014/15 Nichols Point Primary School**

COACHING EXCELLENCE - CLUB OR CENTRE

2011/12 Shane Scrutton
 2012/13 Danielle Borle
 2013/14 Mark Sheppard
 2014/15 **Jason Lindeman**

COACHING EXCELLENCE - ANZ TENNIS HOT SHOTS

2011/12 Wes Horskins
 2012/13 Vicky Lee
 2013/14 Rob Urquhart
 2014/15 **Tim Connelly**

MOST OUTSTANDING 35+ TENNIS SENIOR

2011/12 Judy Hancy
 2012/13 Andrew Rae
 2013/14 Glenn Busby
 2014/15 **Nola Collins**

MOST OUTSTANDING ATHLETE WITH A DISABILITY

2011/12 Zvi Schweitzer
 2012/13 Glen Flindell
 2013/14 Dylan Alcott
 2014/15 **Dylan Alcott**

GORDON MOFFATT JUNIOR ATHLETE OF THE YEAR (MEN AND WOMEN)

1987 Andrew Florent and Elana Clark
 1988 Bill Madafferi and Lily Nejasmic
 1989 Brad Sceney and Maria Purcell
 1990 Taso Vasiliadis and Joanna Limmer
 1991 Mark Philippoussis and Joanne Limmer
 1992 Leigh Holland and Tamlyn Bottrell
 1993 Mark Philippoussis and Vanessa Kendall
 1994 Andrew Ilie and Karen Butler
 1995 Michael Logarzo and Cindy Watson
 1996 Klaudiusz Gursztyn and Christina Wheeler
 1997 Rameez Junaid and Susan Cowan
 1998 Alex Bucewicz and Athina Pirpiris
 1999 Michael Staniak and Emma Gott
 2000 Chris Guccione and Kim Coventry
 2001 Robert McKenzie and Claudia Szabo
 2002 Ryan Thomas and Melissa Koning
 2003 Andrew Coelho and Ewa Losinski

2004 Patrick Nicholls and Mary Ann Liu
 2005 Stephen Donald and Stephanie MacFarlane
 2006 James Lemke and Alenka Hubacek
 2007 Sebastian Bell and Stephanie Wiltshire
 2008 Stephen Hoh and Sally Peers
 2009 Thomas Price and Olivia Rogowska
 2010 Andrew Whittington and Sandy Vo
 2011/12 Daniel Guccione and Zoe Hives
 2012/13 Marc Polmans and Destanee Aiava
 2013/14 **Marc Polmans and Destanee Aiava**

VICTORIAN COMMUNITY CHAMPION

Awarded at the Volunteer's Breakfast

2014
 Metro Ron Simpson, Burwood Tennis Club
 Country Nicole Seckold, Kinglake Ranges Tennis Club

2015
 Metro **Barbara Currie, Keon Park Tennis Club**
 Country **Bill Cosgrave, Mt Prospect Tennis Association**



STATE RANKINGS AS AT 30 JUNE 2015

MEN (OPEN)

1. Samuel Groth
2. Marinko Matosevic
3. Omar Jasika
4. John Peers
5. Andrew Whittington
6. Andrew Harris
7. Dayne Kelly
8. Chris Guccione
9. Jacob Grills
10. Rameez Junaid

BOYS' 18/U

*Birth years 1997
and younger*

1. Omar Jasika
2. Marc Polmans
3. Daniel Nolan
4. Caleb Boland
5. Richard Yang
6. Cody Brackenreg
7. Long Nguyen
8. Socrates Tsoronis
9. Matthew Romios
10. Christopher Cox

BOYS' 16/U

*Birth years 1999
and younger*

1. Matthew Romios
2. Christopher Cox
3. Lucas Vuradin
4. Thomas Bosancic
5. Jeremy Taylor
6. Chase Ferguson
7. Matthew Dellavedova
8. Codey Dunn
9. Jackson Ross
10. Connor Di Marco

BOYS' 14/U

*Birth years 2001
and younger*

1. Ken Cavrak
2. Mason Naumovski
3. Stefan Milenkovic
4. Alex Bulte
5. Timmy Karpinski
6. Stefan Storch
7. Enzo Aguiard
8. Cihan Akay
9. Daniel Paveska
10. Cooper White

BOYS' 12/U

*Birth years 2003
and younger*

1. Cooper White
2. Aidan Vaughan
3. Luke Vuletic
4. Emmanuel Valsamis
5. Alexander Taylor
6. Nicholas Salmon
7. Samuel Torosidis
8. Rowan Mendis
9. James O'Sullivan
10. Hugo Kearney

WOMEN (OPEN)

1. Jarmila Gajdosova
2. Anastasia Rodionova
3. Olivia Rogowska
4. Zoe Hives
5. Sally Peers
6. Viktorija Rajcic
7. Karolina Wlodarczak
8. Destanee Aiava
9. Nives Baric
10. Jaimee Furlis

GIRLS' 18/U

*Birth years 1997
and younger*

1. Destanee Aiava
2. Jamiee Furlis
3. Katerina Valos
4. Danielle McIntyre
5. Jessica Brzozowska
6. Gabriela Sprague
7. Jessica Zaviacic
8. Bianca Duff
9. Noelleda Ah San
10. Sophie Torcello

GIRLS' 16/U

*Birth years 1999
and younger*

1. Destanee Aiava
2. Jaimee Furlis
3. Gabriela Sprague
4. Jessica Zaviacic
5. Bethany Toner
6. Mia Vukicevic
7. Samyuktha Rajagopalan
8. Yiota Nicolaou
9. Jasmin Starr
10. Stephanie Hird

GIRLS' 14/U

*Birth years 2001
and younger*

1. Kexuan Zhou
2. Bianca Compuesto
3. Awien Madol
4. Xinyu Cai
5. Natasa Ilic
6. Alexandra San Andres
7. Mary Jayakody
8. Joy Andreou
9. Helena Spiridis
10. Keona Mendis

GIRLS' 12/U

*Birth years 2003
and younger*

1. Joy Andreou
2. Emily Ioannou
3. Jasmine Ellis
4. Zahra Arthur
5. Jemma Ashe
6. Chloe Green
7. Sarah Burke
8. Elena Micic
9. Iva Pandurevic
10. Jovana Lazarevic

AUSTRALIAN AND STATE REPRESENTATION

AUSTRALIAN

DAVIS CUP

*World Group Play-off
vs Uzbekistan
Held in Perth, Australia,
September 2014*

Sam Groth
Chris Guccione

WORLD GROUP 1ST ROUND VS CZECH REPUBLIC

*Held in Ostrava, Czech
Republic, March 2015*

Sam Groth

FED CUP

*World Group Quarter Final
vs Germany
Held in Stuttgart, Germany,
February 2015*

Jarmila Gajdosova
Olivia Rogowska

WORLD GROUP PLAY-OFF VS NETHERLANDS

*Held in 's-Hertogenbosch,
Netherlands, April 2015*

Jarmila Gajdosova
Olivia Rogowska

2014 JUNIOR FED CUP

*(World Group Finals)
Held in San Luis Potosi,
Mexico, September 2014*

Destanee Aiava

2015 JUNIOR FED CUP

*(Asia/Oceania Final
Qualifying)*

*Held in Shepparton,
Australia, April 2015*

Destanee Aiava
Jaimee Fourlis

2015 JUNIOR DAVIS CUP

*(Asia/Oceania Final
Qualifying)*

*Held in Shepparton,
Australia, April 2015*

Lucas Vuradin*
Matthew Romios
(emergency)

2014 14/U WORLD JUNIOR TEAMS FINALS

*Held in Prostějov, Czech
Republic, August 2014*

Destanee Aiava
Janette Lin
Gabriela Ruffels

STATE

PIZZEY CUP 2015

Held in Hobart, May 2015

BOYS

David Hough (Captain)
Daniel Nguyen
Erik Holt-Crossman
Curtis Noble
Andrew Parker
Jeremy Taylor
Mike Vaughan
Jackson Ross

GIRLS

Danielle McIntyre (Captain)
Hene Demiri
Elly Hartnett
Madeline Kowalski
Olivia Ryan
Jasmin Starr
Bethany Toner
Sophie Torcello

Finished: Second

BRUCE CUP 2014

*Held in Darwin, August
2014*

BOYS

Alex Bulte
Enzo Aguiard
Josh McPhee
David Qariaqus
Luke Vuletic
Cooper White
Emmanuel Valsamis

GIRLS

Alexandra Chua San Andres
Jordan Trevena
Keona Mendis
Chanel McKay
Emily Ioannou
Holly Shlatter
Pearl Jansz

Finished: First

2014 VICTORIAN STATE TEAMS

SPROULE/STEPHENS CUP (BOYS' 14/U)

*Held in Melbourne,
December 2014*

TEAM A

Matthew Dellavedova*
Greg Polmans
Connor DiMarco
Codey Gunn

Team Manager:

Mark Hlawaty

Finished: Eighth

TEAM B

Campbell Salmon
Stefan Milenkovic
Marcus Bulmaga
(emergency)
Ken Cavrak (emergency)

Team Manager:

Carlos Cuadrado

Finished: Third

MARY HAWTHORN CUP (GIRLS' 14/U)

*Held in Melbourne,
December 2014*

TEAM A

Jasmine Starr
Jessica Zaviacic
Alessia Roso

Team Manager:

Beti Sekulovski

Finished: Fifth

TEAM B

Mia Vukicevic
Alya Kalachova
Teodora Vuruna

Team Manager:

Kim Davis

Finished: Seventh

ROD LAVER CUP (BOYS'12/U)

*Held in Melbourne,
December 2014*

TEAM A

Alex Bulte
Enzo Aguiard
David Qariaqus

Team Manager:

Micha Fischer

Finished: Third

TEAM B

John Amato
Cooper White
Luke Vuletic

Team Manager:

Alex Jago

Finished: Seventh

MARGARET COURT CUP (GIRLS' 12/U)

*Held in Melbourne,
December 2014*

TEAM A

Alexandra San Andres
Joy Andreou
Harmony Mitsos

Team Manager:

Emily Rea

Finished: Ninth

FOUNDATION CUP REGIONAL STATE TEAM 13/U

*Held in Melbourne,
January 2015*

BOYS

Harry Boyd (South West)
Ben Grumley (Central
Gippsland)
Billy Spicer (Barwon)
Patrick Drake (South West)

Team Manager:

John Glynn

Finished: Second

GIRLS

Amy Stevens (Barwon)
Eloise Swarbrick
(SouthWest)
Jess McDonald (Wimmera)
Megan Markov (Barwon)

Team Manager:

Julie Glynn

Finished: Second

**Injured, unable to partake in event*

RESULTS

2014/15 VICTORIAN NATIONAL CHAMPIONS

2014 AUSTRALIAN CHAMPIONSHIPS

Held in Melbourne, December 2014

16/u Girls' Singles	Jaimee Fourlis
16/u Boys' Doubles	Christopher Cox & Matthew Romios
14/u Girls' Doubles	Jessica Zaviacic
12/u Girls' Doubles	Alexandra Chua San Andres
12/u Boys' Doubles	Alex Bulte and David Qariaqus

2014 AUSTRALIAN PRIMARY SCHOOLS CHAMPIONSHIPS

Held in Darwin, August 2014

13's Boys' Singles	Alex Bulte
--------------------	------------

2013/14 REGIONAL TEAM EVENTS RESULTS

11/U FRANK SEDGMAN CUP

3-4 August 2013, Traralgon Tennis Association

North Eastern Junior	3-36 d	North Suburban Junior	3-33
----------------------	--------	-----------------------	------

13/U BOYS' JOHN FITZGERALD CUP

27-28 October 2013, Ballarat Regional Tennis Centre

Central Gippsland	5-45 d	Barwon	1-19
-------------------	--------	--------	------

13/U GIRLS' FOUNDATION CUP

17-18 November 2013, Sale Tennis Club

Wimmera	4-38 d	Central Gippsland	2-34
---------	--------	-------------------	------

10/U WAYNE ARTHURS CUP

14-15 December 2013, Kooyong Lawn Tennis Club

North Suburban Junior	6-36 d	Bayside-Moorabbin	0-16
-----------------------	--------	-------------------	------

15/U BRADTKE/LUCZAK CUP (FORMERLY KNOWN AS THE AMBASSADORS CUP)

15-16 February 2014, Wodonga Tennis Centre

Central Gippsland	3-25 d	Barwon	1-17
-------------------	--------	--------	------

12/U, 14/U, 16/U ASSOCIATION AND REGIONAL TEAMS CHALLENGE

29-30 March 2014, Shepparton Lawn Tennis Club

North Eastern Junior	18-119 d	Barwon	6-81
----------------------	----------	--------	------

10/U WAYNE ARTHURS CUP

12-13 April 2014, Kooyong Lawn Tennis Club

Peninsula	4-26 d	North Eastern Junior	2-25
-----------	--------	----------------------	------

2014/15 STATE CHAMPIONSHIPS

2014 VICTORIAN ID'S STATE CHAMPIONSHIP

11-12 October 2014, Tennis World Albert Reserve

	Winners	Score
Singles		
Men	Zvi Schweitzer (1)	6-1 6-0
Women	Not played	
Doubles		
Men	Z Schweitzer/B Jinks (1)	Round robin based
Women	Not played	

2014 VICTORIAN GRASS COURT CHAMPIONSHIPS (AMT PLATINUM)

26-30 December 2014, Geelong Lawn Tennis Club

	Winners	Score
Singles		
Men	Daniel Ferretti (4)	6-3 6-2
Women	Alison Bai (1)	7-5 6-3
Doubles		
Men	D Ferretti/A Leeder Chard (1)	6-3 6-3
Women	Z Hives/K Westbury (1)	3-6 6-4 10-6

DECEMBER 2014 JUNIOR DEVELOPMENT SERIES STATE CHAMPIONSHIPS

Notting Hill Pinewood TC Sunday 7 December 2014

10/u Boys

Winner: Ryan Lee

Runner Up: Mitchell Ayton

10/u Girls

Winner: Brenna Cerasa

Runner Up: Daria Nikishova

JUNE 2015 JUNIOR DEVELOPMENT SERIES STATE CHAMPIONSHIPS

Dendy Park Tennis Club, Sunday 23 June 2015.

11/u Boys

Winner: Nicholas Miloi

Runner Up: Ben Lindeman

11/u Girls

Winner: Hayley Sibbald

Runner Up: Charlotte Banfield- Lynch

VICTORIAN PLAYER SUCCESS



SAM GROTH



OMAR JASIKA



OLIVIA ROGOWSKA

SAM GROTH

- Represented Australia in 2014 Davis Cup
- 3rd round of 2015 Aus. Open
- Won Santaizi ATP Challenger in Taipei, Taiwan in April 2015
- His highest singles ranking of No. 68 was in June 2015
- Won Aegon Manchester Trophy ATP challenger title in June 2015

OMAR JASIKA

- Became the first player in 28 years to win both the boys singles and doubles events at the Junior US Open in 2014
- Played FAST4 against Rafael Nadal in front of a packed crowd on Margaret Court Arena
- Winner at the ITF Korea Futures \$15,000 Tournament in May 2015

ALEX BULTE

- Represented Victoria's 13/u Bruce Cup team that was undefeated
- Alex was the 13's School Sport Australia Primary School Championship Singles winner
- Made it to the Quarter Finals at the 12 & U Boys singles 2014 Australian Championships in December

OLIVIA ROGOWSKA

- Received a wildcard into 2015 Australian Open Women's draw
- Made it to 2R in the 2015 Australian Open of Doubles
- Represented Australia in the 2015 Fed Cup



DYLAN ALCOTT



JOHN PEERS



DESTANEE AIAVA



JAMIEE FOURLIS

DYLAN ALCOTT

- In July 2014, he won the British Open Wheelchair Tennis Championship
- Won the Australian Open Wheelchair Quad 2015
- Won the NZ Open in January 2015
- Dylan has won more than 10 Quads/ Wheelchair Titles in 2015, including the Japan Open, Belgian Open and the Sydney International Open

JOHN PEERS

- Made it to 3R doubles draw at the 2014 French Open, 2014 Wimbledon and 2015 Australian Open
- Winner of the Brisbane ATP 250 International Doubles with partner Jamie Murray in Jan 2015
- Runner-up Men's Doubles with Jamie Murray at the Barcelona Open
- QF with Jamie Murray at the Madrid Masters ATP 1000 the Rome Masters ATP 1000

DESTANEE AIAVA

- Represented Australia in the Junior Fed Cup that qualified for the World Group
- Reached the quarter finals in the Melbourne Park Women's International in April 2015 ITF \$15,000
- Made the semi-final of the 23rd International Junior tournament ITF Grade 1 of Offenbach in June 2015

JAMIEE FOURLIS

- First WTA debut ranking in April 2015, coming in at World No. 930
- SF at the Melbourne Park Tennis International ITF Futures in April of 2015
- Won singles ITF Junior Grade 3 in Poland June 2015
- Won singles and doubles events at ITF Junior Grade 2 in Netherlands June 2015



2015 VICTORIAN JUNIOR GRASS COURT CHAMPIONSHIPS (JT GOLD)

8-12 January 2014, Wodonga Tennis Centre

	Winners	Score
Boys' 12/u Singles	Daniel Paveska (1)	6-4 6-2
Boys 12/u Doubles	D Paveska/L Vuletic (1)	5-7 6-1 10-5
Boys' 14/u Singles	Stefan Milenkovic (1)	6-4 2-6 6-4
Boys' 14/u Doubles	M Naumovski/M Sinclair (2)	4-6 7-5 10-8
Boys' 16/u Singles	Luca Cancar (8)	7-5 5-7 6-2
Boys' 16/u Doubles	L Cancar/M Cook (4)	6-4 3-6 10-5
Girls 12/u Singles	Kyoka Kubo	6-3 6-1
Girls' 12/u Doubles	J Andreou/J Ellis (1)	Walkover
Girls' 14/u Singles	Annerly Poulos (2)	6-0 6-0
Girls' 14/u Doubles	Z Duff/A San Andres (1)	6-2 6-1
Girls' 16/u Singles	Sanyukta Singh (1)	7-5 7-6
Girls' 16/u Doubles	R Coffin/M Kamoe	Walkover

2015 VICTORIAN JUNIOR CLAY COURT CHAMPIONSHIPS (JT PLATINUM)

6-10 April 2015, Dendy Park, Royal Park and Dingley Tennis Clubs

	Winners	Score
Boys' 12/u Singles	Alex Bulte (1)	6-4 6-1
Boys' 12/u Doubles	E Aguiard/C White (7)	7-5 2-6 10-7
Boys' 14/u Singles	Codey Gunn (3)	3-6 6-3 6-1
Boys' 14/u Doubles	K Cavrak/S Milenkovic (3)	5-7 7-5 10-8
Boys' 16/u Singles	Christopher Cox (3)	6-3 5-7 6-2
Boys' 16/u Doubles	M Bouzige/C Cox (1)	3-6 7-5 10-6
Girls' 12/u Singles	Mikayla Zahirovic (4)	6-3 7-5
Girls' 12/u Doubles	C Portela/A San Andres (1)	6-3 2-6 13-11
Girls' 14/u Singles	M Vukicevic (2)	7-6(3) 2-6 7-6(8)
Girls' 14/u Doubles	T Farrow/M Vukicevic (1)	6-4 6-4
Girls' 16/u Singles	M Haet (1)	6-4 6-2
Girls' 16/u Doubles	M Haet/E Husrefovic (1)	7-6(3) 6-3

2015 VICTORIAN CLAY COURT CHAMPIONSHIPS (AMT PLATINUM)

16-20 March 2015, Glen Iris Valley Recreation Club

	Winners	Score
Singles		
Men	Daniel Byrnes (5)	6-7(6) 6-2 7-5
Women	Sandra Zaniewska (1)	6-4 6-4
Doubles		
Men	L Harvey/S Puodziunas (1)	6-2 7-5
Women	A Munozov/S Reix (1)	6-3 6-4

2015 INTER-REGIONAL COUNTRY CHAMPIONSHIPS

2-4 January 2015, Creswick

	Winners	Score
Men's Open Singles	Matthew Hicks (1) Barwon	6-1 6-3
Men's Open Doubles	M Hicks/A Lasky (1) Barwon	6-5(4)
Women's Open Singles	Carolyn McGann (1) Barwon	7-5 7-6
Women's Open Doubles	C McGann/K Brunga (1) Barwon	8-3
Open Mixed Doubles	M Hicks/C McGann (1) Barwon	6-5(5)
Men's Singles 45+	Davis Starling (1) Goulburn	6-1 6-4
Men's Doubles 45+	J Evans/D Starling (1) Goulburn	6-5(5)
Women's Singles 45+	Julie Golightly (1) Barwon	6-1 6-0
Women's Doubles 45+	J Golightly/F Walker (1) Barwon	6-2
Mixed Doubles 45+	D Starling/J Buzza (1) Clement Goulburn	6-4
Men's 22/u Singles	Nick Fenaughty (4) Goulburn	6-1 6-4
Men's 22/u Doubles	S Pritchard/J Tobin (1) South West	6-4
Women's 22/u Singles	Ashleigh Jolliffe (3) Central Highlands	7-5 4-6 10-8
Women's 22/u Doubles	R Virgo/J Waites (2) East Gippsland	6-5(3)
Mixed Doubles 22/u	N Fenaughty/C Price (2) Goulburn	9-6
Men's 18/u Singles	Isaac Watson (2) Loddon Campaspe	6-4 6-4
Men's 18/u Doubles	Z Lethlean/I Watson (1) Loddon Campaspe	6-4
Women's 18/u Singles	Sheree Moore (1) Northern Mallee	6-1 6-2
Women's 18/u Doubles	E Rankin/O Ryan (1) Barwon	6-2
Mixed Doubles 18/u	I Watson/M Walsh (3) Loddon Campaspe	6-4
Boys' 16/u Singles	Aadyn Sleep-Dalton (6) Barwon	7-5 0-6 10-8
Boys' 16/u Doubles	J Hicks/R Leader (2) Loddon Campaspe	6-2
Girls' 16/u Singles	Indiah Preston (3) Barwon	6-0 6-0
Girls' 16/u Doubles	C Keall/A Pryse-Smith (1) Central Highlands	6-5(5)
Mixed Doubles 16/u	T Ennor/I Preston (2) Barwon	6-5(5)
Boys' 14/u Singles	Harry Spicer (3) Barwon	7-5 7-6(2)
Boys' 14/u Doubles	A Hider/H Spicer (2) Barwon	6-5(3)
Girls' 14/u Singles	Jess Swarbrick (3) South West	6-1 6-4
Girls' 14/u Doubles	C Crapper/M Markov (2) Barwon	6-0
Mixed Doubles 14/u	J Delmencio/E Morrison Northern Mallee	8-7(3)
Boys' 12/u Singles	Josh McPhee (3) Barwon	6-4 6-4
Boys' 12/u Doubles	J McPhee/R Lee (1) Barwon	8-4
Girls' 12/u Singles	Eloise Swarbrick (1) South West	6-3 6-1
Girls' 12/u Doubles	E Swarbrick/D Warren (1) South West	6-2
Mixed Doubles 12/u	J O'Sullivan/A Santurini (6) Central Highlands	6-3

REGION BY REGION FINAL POINTS STANDINGS

1	Barwon	264
2	Goulburn	180
3	Loddon Campaspe	153
4	Mornington Peninsula	149
5	Central Highlands	146
6	South West	146
7	Wimmera	133
8	Northern Mallee	125
9	East Gippsland	79

COOKE SHIELD FOR MOST IMPROVED REGION

Northern Mallee

STATE COMPETITIONS

2014 JUNIOR PENNANT GRADE GRAND FINAL RESULTS

BOYS

12A	North Suburban Junior	4-8-56	d	Geelong & Surf Coast	2-3-27
12B	Bayside- Moorabbin	5-9-61	d	North Suburban Junior	1-2-23
12C	Berwick	4-7-54	d	North Suburban Junior	2-5-37
12D	Geelong & Surf Coast	4-8-60	d	Bayside-Moorabbin	2-5-45
14A	Bayside-Moorabbin	5-8-58	d	Waverley Tennis	1-2-26
14B	Bayside-Moorabbin	5-9-56	d	Berwick	1-2-33
14C	Waverley Tennis	3-6-54	d	Bayside-Moorabbin	3-5-49
14D	Waverley Tennis	4-7-48	d	Eastern Region	2-4-34
14E	Bayside-Moorabbin	3-6-52	d	Waverley Tennis	3-6-51
16A	Eastern Region Blue	3-5-53	d	North Eastern Junior	3-5-38
16B	Waverley Tennis	6-10-65	d	North Eastern Junior Black	0-0-28
16C	Geelong & Surf Coast	6-10-61	d	Melton District	0-1-23

GIRLS

12A	Bayside-Moorabbin	3-6-47	d	Waverley Tennis	3-5-48
12B	North Suburban Junior Black	5-9-58	d	North Suburban Junior Red	1-2-40
14A	Eastern Region	4-7-56	d	North Eastern Junior	2-5-51
14B	Geelong & Surf Coast	3-6-57	d	Peninsula Orange	3-5-46
16A	Geelong & Surf Coast	6-10-63	d	North Eastern Junior	0-1-29
16B	North Eastern Junior	6-10-64	d	Berwick	0-0-0

MIXED

10A	North Suburban Junior	5-9-62	d	Eastern Region	1-2-32
10B	Western Region	5-8-56	d	North Eastern Junior	1-2-37
18A	Peninsula*				

*First placed team



2014 JUNIOR PENNANT PLAYERS OF THE YEAR

	Winners	Club
Mixed 10A	Brian Capalnean	North Suburban Junior TA
Boys 12A	Daniel Paveska	North Suburban Junior TA
Girls 12A	Isabelle Papazyan	Waverley Tennis
Boys 14A	Arthur Kaganovitch	Bayside-Moorabbin
Girls 14A	Amy Stevens	Geelong & Surf Coast
Boys 16A	Jackson Bruce-Tennant	Eastern Region Tennis
Girls 16A	Olivia Ryan	Geelong & Surf Coast
Mixed 18A	Broden Cox	Peninsula TA

2014 PENNANT GRADE GRAND FINAL RESULTS

MEN'S OPEN

Grade 1	Glenburn Tennis Club	5-10-75	d	North Ringwood No.2	0-3-57
Grade 2	Heatherdale No.1	4-9-75	d	Tennis World	3-6-67
Grade 3	Carmelite (Middle Park) No.2	4-11-96	d	Maccabi	3-8-79
Grade 4	Parkwood No.1	4-9-87	d	Caulfield Rec	3-8-81
Grade 5	Overport Park	5-10-68	d	Oakleigh	1-3-47
Grade 6	MCC Kew Sports Club	5-11-84	d	Hadfield	2-7-62
Grade 7	Montrose	4-9-54	d	Hoppers Crossing No.2	0-0-18
Grade 8	Heathmont	5-11-88	d	Black Rock	3-9-81
Grade 9	East Camberwell	5-10-78	d	Beaumaris Lawn	1-4-58
Grade 10	Whites Lane Tennis Club	5-12-97	d	Dandenong	3-8-85

MEN'S OPEN DOUBLES

Grade 1	Kooyong Lawn No.1	2-5-39	d	Grace Park Lawn	0-1-32
Grade 2	Mt Eliza	3-6-42	d	Yarraville	1-2-33
Grade 3	Mitcham	3-6-47	d	Rosanna	1-3-39
Grade 4	Parkville	2-5-52	d	Glen Iris Valley Rec	1-4-48

MEN'S MASTERS 50+ DOUBLES

A Grade	Royal Park No.1	2-5-36	d	Legend Park	2-5-34
B Grade	Centenary Park	2-6-37	d	Greenvale	0-0-14

WOMEN'S OPEN

Grade 1	Kooyong Lawn No.1	5-11-81	d	Delahey Rec	1-4-55
Grade 2	Geelong Lawn	5-11-98	d	MCC	3-8-74
Grade 3	Doveton	4-9-65	d	Beaumaris Lawn	2-4-52
Grade 4	Essendon	4-9-83	d	Kings Park	4-9-69
Grade 5	Frankston	4-9-61	d	Tennis World	1-2-20
Grade 6	Dendy No.1	4-9-66	d	Dandenong No.2	1-2-41

2014 ASIA-PACIFIC TENNIS LEAGUE RESULTS

ATL - South East Conference Final, December 2014, Melbourne Park

Men's	Kooyong Classics	3-8-44	d	Royal South Yarra's	3-7-39
Women's	Bayside Thunder	3-7-35	d	MCC Stars	3-6-35

ATL - National Playoffs, January 2015, Melbourne Park

Men's	3/4 Playoff	Royal South Yarras	3-7-44	d	Maly Waves	3-7-31
Men's	5th Place	Kooyong Classics	5-10-40	d	Pacific Ocean Dolphins	0-0-20
Women's	Final	Bayside Thunder	4-8-41	d	Flagstaff Freighters	2-6-33
Women's	3/4 Playoff	MCC Stars	4-9-42	d	Tennyson Volt	1-3-17

2015 PREMIER LEAGUE GRAND FINAL RESULTS

April 2015, Glen Iris Valley Recreation Club

Men's*	Grace Park Hawthorn	1-2-28	d	Kooyong Lawn	1-2-25
Women's*	Beaumaris Lawn	0-2-27	d	Kooyong Lawn	2-4-34

*Matches abandoned due to wet weather, higher ranking team during regular season declared winners

PLAYER OF THE YEAR AWARD

2014 PENNANT PLAYER OF THE YEAR AWARD

Men's Open

	Winners	Club
Grade 1	Matthew Hicks	Hepner Place Indoor
Grade 2	Jarrod Broadbent	Beaumaris Lawn
Grade 3	Andrew Kotnik	Carmelite (Middle Park)
Grade 4	James Carlson	Clarinda
Grade 5	Joel Compagnino	Doncaster
Grade 6	Simon Hiscock	Black Rock
Grade 7	Chris Gilmore	Hoppers Crossing
Grade 8	Andrew Moncur	Strathmore
Grade 9	Shehan Rupasinghe	St Pauls Apostle
Grade 10	Bailey Packham	Carmelite (Middle Park)

Men's Open Doubles

	Winners	Club
Grade 1	Cameron Maccoll	St Mary's (Greensborough)
Grade 2	Vu Tran	Yarraville
Grade 3	Sandro Madrigale	Rosanna
Grade 4	Peter Rowe	Parkville

Men's Masters 50+ Doubles

	Winners	Club
A Grade	Robert Hughes	Legend Park
B Grade	Michael Harrington	Centenary Park

Women's Open

	Winners	Club
Grade 1	Alana Parnaby	Kooyong Lawn
Grade 2	Ashleigh Hancock	MCC
Grade 3	Therese Oyston	East Malvern
Grade 4	Lise Govan	Essendon
Grade 5	Luana Rochelli	Tennis World
Grade 6	Stephanie Mackay	Dendy Park



KEVIN HOWARD AWARD

Best performing Men's Masters 45+ Doubles team

Centenary Park - Masters 45+ B Grade	
Ken Dibble (Captain)	
Wayne Curtis	Jeff Garnet
Michael Harrington	Mike Hogan
Kevin McKee	Craig Miller
Steve O'Reilly	Bill Schults
Tony Wayman	

2014 ASIA-PACIFIC TENNIS LEAGUE VICTORIAN CONFERENCE

	Winners	Club
Men's	Arina Rodionova	Bayside Thunder
Women's	Dane Propoggia	Royal South Yarras

2015 PREMIER LEAGUE

	Winners	Club
Men's	Jarryd Maher	Grace Park Hawthorn
Women's	Zoe Hives	MCC

SUPPORTERS

MAJOR SUPPORTERS

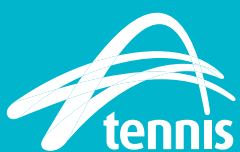
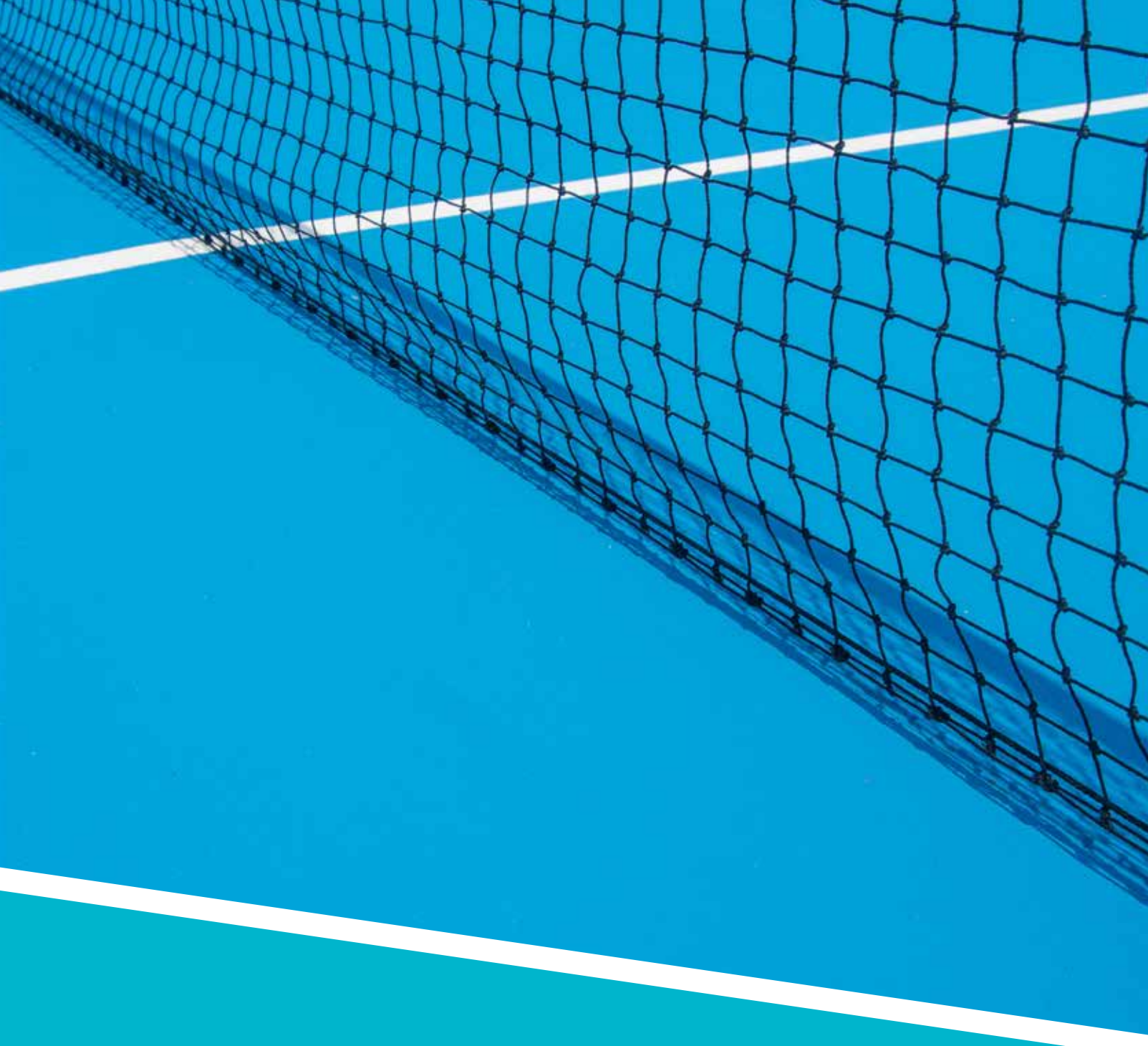


OFFICIAL PARTNERS



PARTNERSHIPS AND INDUSTRY SUPPORT





Tennis Victoria

AAMI Park
Olympic Boulevard
Melbourne, Victoria 3001

Locked Bag 6001
Richmond, Victoria 3121

T (03) 8420 8420
F (03) 8420 8499

tvreception@tennis.com.au

tennis.com.au/vic

 [facebook.com/tennisvic](https://www.facebook.com/tennisvic)

 [tennisvic](https://www.instagram.com/tennisvic)

 [@tennis_vic](https://twitter.com/tennis_vic)