



Tennis Australia POP Tennis & Pickleball Deliverer Course

QLD-COOLUMBEACH-SUNSHINECOAST-
OCTOBER

Applications close: 4 November 2024

Course cost: \$299.00 (Inc. GST)*

*This course is provided at no charge to current Tennis Australia Coach Members & Tennis Australia affiliate club members as a member benefit

Course Information



TENNIS AUSTRALIA POP TENNIS & PICKLEBALL DELIVERER COURSE

A great way to start your coaching journey, the Tennis Australia POP Tennis & Pickleball Deliverer Course is suitable for those who would like to begin delivering POP Tennis or Pickleball, or who are currently delivering, under the guidance of a qualified coach.

The majority of the time during the course is spent on-court with participants actively learning to deliver sessions where players serve, rally and score using modified balls, racquets, nets and courts appropriate to the developmental needs of the players.

If you are not a current Tennis Australia Coach Member, you may be eligible for up to two years complimentary Tennis Australia Coach Membership as a Trainee Tennis Australia Coach Member.

Course details

The Tennis Australia POP Tennis & Pickleball Coaching Course will be delivered on:

Wednesday 20 November 2024, 10:00am to 2:00pm – On-court session at the Coolum TC
(1 day, 100% attendance is required)

The venue for this course will be:

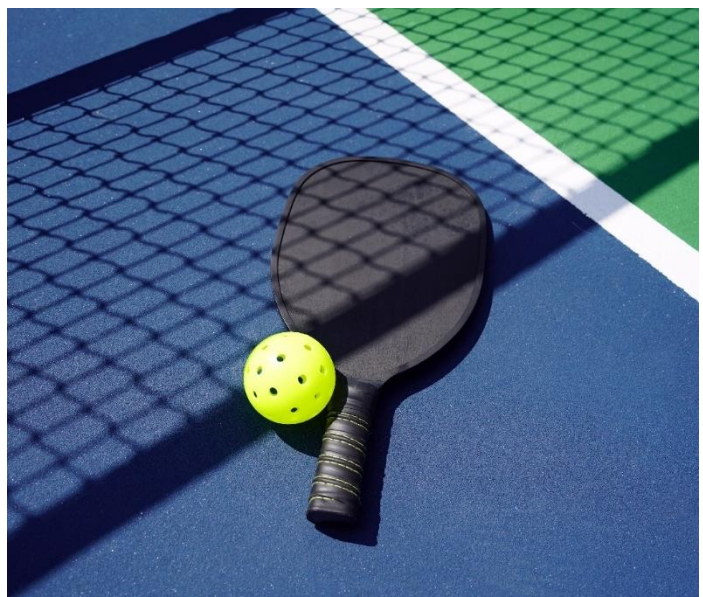
Coolum Tennis Club, David Low Way, Coolum Beach, Greater Sunshine Coast, QLD 4573

All applicants will be notified of the status of their application by email within one week of the closing date. In some instances, there are a limited number of positions available in the course. Course applicants will be admitted to the course based on their application and their ability to meet the course entry criteria.

Course Coordinator

Tennis Australia
Sam Bradshaw
Coach Education Specialist
E: coachedqld@tennis.com.au
M: 0426 558 933

Applications close: 4 November 2024

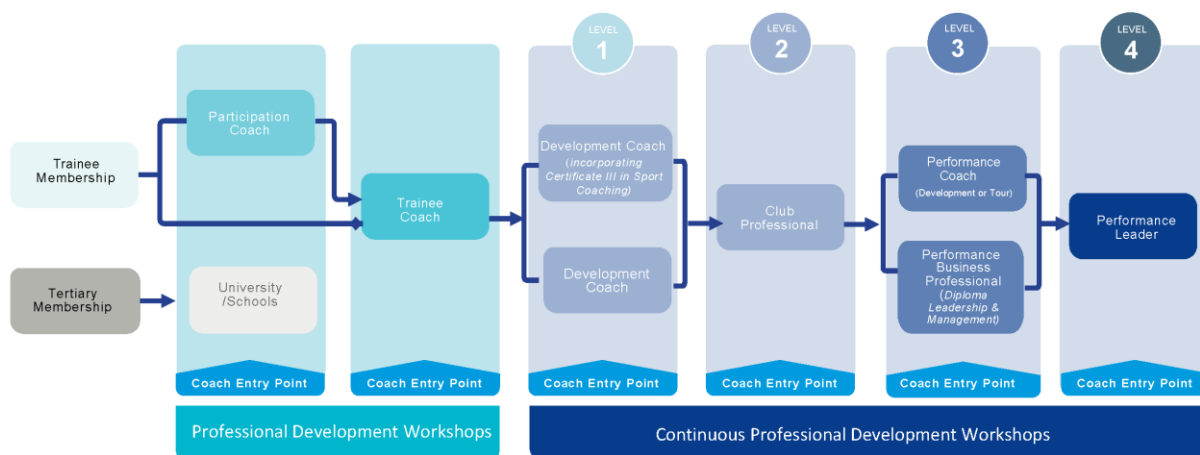




Learning outcomes

- Update your knowledge of the POP Tennis & Pickleball programs
- Prepare you to conduct POP Tennis & Pickleball activities
- Introduce you to basic coaching methodology
- Conduct safe tennis activities for players
- Introduce you to the role and responsibilities of a Pop Tennis & Pickleball coach

Tennis Australia Coach Pathway



Course entry criteria

To gain acceptance into the Tennis Australia POP Tennis & Pickleball Deliverer Course applicants are required to meet the following criteria:

- Be a minimum of 16 years of age at the time of the Tennis Australia POP Tennis & Pickleball Deliverer Course¹
- Comply with all requirements of the Tennis Australia Member Protection Policy.
- Maintain a suitable physical fitness level to complete the practical components of the course. If you have any concerns about this component, please contact the Course Coordinator to discuss.
- A signed Tennis Australia Member Protection Declaration (MPD), this declaration is completed online as part of your application.
- A copy of your current Working with Children Check (WWCC) or your state/territory equivalent. State/Territory WWCC requirements vary around Australia, details can be found at tennis.com.au/coaches/membership/policies.
- A copy of your National Police Check (NPC) available from nationalcrimecheck.com.au at a cost of \$49.90 (Inc. GST)

Notes:

1. The course may be completed by a candidate who is 15 years of age upon approval from the course coordinator.
2. More information can be obtained from the course coordinator.



Application checklist

- Complete an application online via a link from the Tennis Australia website (visit courseapplications.tennis.com.au)
- Have the required personal fitness level to physically complete the practical requirements of the coaching course
- A copy of the current WWCC or a receipt of lodgement as required in your state/territory (visit tennis.com.au/coaches/membership/policies) during the online application process
- A copy of your National Police Check or receipt of lodgement as required in your state/territory (visit tennis.com.au/coaches/membership/policies) at a cost of \$49.90 (Inc. GST), during the online application process.
- Payment of \$299.00 (Inc. GST) course fee¹

Notes:

1. *This course is provided at no charge to current Tennis Australia Coach Members & Tennis Australia affiliate club members as a member benefit.*

Compulsory attendance

If accepted into the course, you must agree to attend all the sessions. In the event of non-attendance you will be required to attend contact days at a future course to make up the sessions missed. If you are unable to attend due to illness a medical certificate is required.

Number of course participants

The maximum number of candidates is 24. This ensures quality in delivery and learning experiences. The maximum Tennis Australia Coach Developer to participant ratio is 1:12 for on-court practical sessions.

Procedure for appeals and complaints

Tennis Australia actively encourages feedback and dialogue with our course participants as part of our continuous improvement philosophy. We established an equitable and transparent process for encouraging and dealing with feedback, complaints, grievances and appeals.

Our policy is governed by the following values and principles:

- All course participants shall have a clear opportunity to express their view on their learning experience, whether positive or negative.
- The process shall be transparent and no course participant shall perceive any disadvantage by expressing their views
- The complaint shall be dealt with at the level of occurrence with opportunity for escalation to hasten resolve
- Complaints that involve a breach of Tennis Australia national policies (e.g. Member Protection policy) shall be directed to the Tennis Australia Integrity team.
- Course participant feedback shall be dealt with in a timely, confidential manner and the participant shall be kept informed of progress.
- Course participant feedback will be analysed and trends built into the company's continuous improvement process so all course participants benefit from the learning of the feedback.



Tennis Australia refund policy

Upon acceptance into the Tennis Australia POP Tennis & Pickleball Deliverer Course, candidates are required to pay the full course fees prior to the first day of the course.

Fees paid by candidates may be refunded in the following circumstances and time frames:

- For withdrawals received in writing, after accepting a place in the course but before the first day of the course, fees will be refunded less a \$50.00 (Inc. GST) administrative fee.
- For withdrawals received after the course start date, no payments will be refunded.

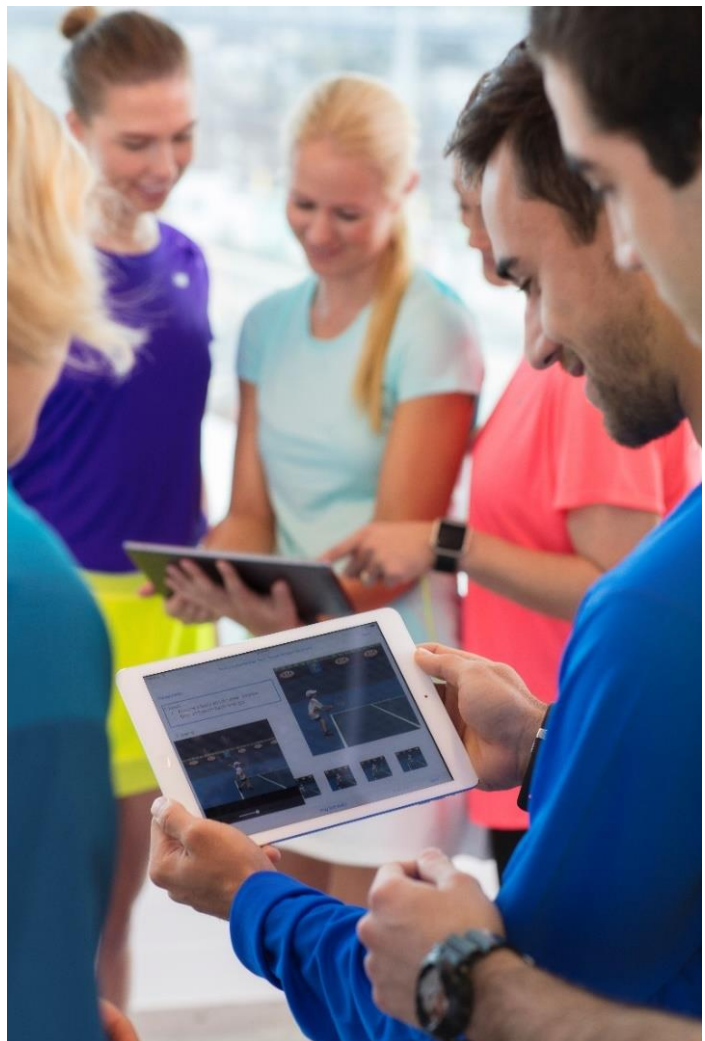
Tennis Australia Coach Membership

On completion of the Tennis Australia Pop Tennis & Pickleball Deliverer Course, you may be eligible to receive a complimentary Trainee Tennis Australia Coach Membership (if not already an existing member). Your complimentary membership, valued at up to \$218.00 (Inc. GST) will be valid for 24 months.

The Trainee Tennis Australia Coach Membership includes: Insurance \$30 Million Public Liability and \$10 Million Professional Indemnity and Personal Accident Cover, plus a wide range of benefits and resources.

For further information about Tennis Australia's services, programs or special offers, hit the net! Our website not only keeps you up-to-date with the latest local, national and international tennis news, it also outlines all Tennis Australia Coach Membership services and benefits.

T: 1800 PLAY TENNIS
E: play@tennis.com.au
W: tennis.com.au/coaches





Tennis acknowledges the Traditional Custodians of the land on which we work, rest and play, and pay our respect to Elders past and present.